

PART OF THE W 1/2 OF FRACTIONAL SECTION 4, T6N, R10W, OF THE 3RD PM, MADISON COUNTY, ILLINOIS

BEARINGS SHOWN HEREON ARE BASED ON SURVEY CONTROL DATA AS PROVIDED BY THE ILLINOIS DEPARTMENT OF TRANSPORTATION.

FAP NO.	SECTION	COUNTY	TOTAL SHEETS	SHEET NO.
310	60-16	MADISON	662	152
STA. 212+00		TO STA. 241+00		
FED. ROAD DIST. NO. _____ ALLEYS _____ FED. AID PROJECT _____				
CONTRACT NO. 76311				

AREA REMAINING IN MADISON COUNTY = 140.0458 ACRES

AREA REMAINING IN JERSEY COUNTY = 5.1720 ACRES

SW CORNER SECTION 4  
T6N, R10W, OF 3RD PM,  
MADISON COUNTY, ILLINOIS

N.0°20'17"E, 1883.24' (1883.24')

SECTION 5  
SECTION 4

The Plat of Highways for those parcels north of the Madison County line were prepared by Homer L. Chastain & Associates, LLP (I.D.O.T. Job No. R-98-039-00). The basis of bearing for the survey prepared by Hurst Rosche Engineers, Inc. and the basis of bearing for the survey prepared by Homer L. Chastain & Associates, LLP differ by 1 arc second. However, the physical location of the proposed centerline of construction for FAP Route 310 at the Madison-Jersey County line is equal.

CENTERLINE OF CONSTRUCTION BEARING EQUATION FOR FAP 310			
H-R (South of Madison County line)	TO	HLC (North of Jersey County line)	
STA. 223+09.32	TO	STA. 232+94.45	STA. 232+94.45 TO STA. 264+35.65
N 23° 32' 20" W		N 23° 32' 21" W	

SEE SHEET 29A FOR  
TOTAL HOLDING SKETCH  
OF PARCEL 8701074

**LEGEND**

- EXISTING CENTERLINE
- EXISTING RIGHT OF WAY LINE
- EXISTING EASEMENT LINE
- PROPOSED CENTERLINE
- A/C ACCESS CONTROL & PROPOSED RIGHT OF WAY LINE
- A/C ACCESS CONTROL LINE
- PROPOSED TEMPORARY EASEMENT LINE
- PROPOSED PERMANENT EASEMENT LINE
- SECTION LINE
- QUARTER SECTION LINE
- QUARTER SECTION LINE
- PROPERTY (DEED) LINE
- APPEARANT PROPERTY LINE
- MEASURED DIMENSION
- COMPUTED DIMENSION
- RECORDED DIMENSION
- FOUND IRON PIPE OR IRON ROD
- SET 5/8 INCH IRON ROD
- PERMANENT SURVEY MONUMENT, I.D.O.T. STD. 667101 (TO BE SET BY OTHERS)
- CUT CROSS FOUND OR SET
- SAME OWNERSHIP
- STAKING OF PROPOSED RIGHT OF WAY. SET 5/8 INCH METAL ROD WITH DIVISION OF HIGHWAY SURVEY MARKER TO MONUMENT THE POSITION SHOWN, IDENTIFIED BY INSCRIPTION DATA AND SURVEYORS REGISTRATION NUMBER.
- STAKING OF PROPOSED RIGHT OF WAY IN CULTIVATED AREAS. SET 5/8 INCH METAL ROD WITH DIVISION OF HIGHWAY SURVEY MARKER 20 INCHES BELOW GROUND SURFACE TO MONUMENT THE POSITION SHOWN, IDENTIFIED BY INSCRIPTION DATA AND SURVEYORS REGISTRATION NUMBER.

SEE SHEET 2 OF PLAT OF HIGHWAY JOB NO. R-98-039-00 BY HOMER L. CHASTAIN & ASSOCIATES (SEC. 60-16-1, 42-1,2,3) FOR PROPOSED RIGHT OF WAY IN JERSEY COUNTY INCLUDING PARCELS 870174-TRACT 2, 8701074PE AND 8701074TE-B.

**NORTHWEST CORNER SECTION 4**  
NORTHWEST CORNER SECTION 4 T6N R10W 3RD PM  
RECORDED 07-02-2001  
DOC. 2001R33214  
N.849,478.4929 E.2,276,944.4803

THE CORNER IS A CALCULATED LOCATION FROM OTHER SECTION & QUARTER CORNERS. THE AXLE REFERENCED ON MONUMENT RECORD IN BOOK 3191, PAGE 2309 HAS BEEN COVERED BY A POND, THE TOP OF A LEANING PIPE IS EXPOSED IN THE POND DURING LOW WATER, THE PIPE IS NEAR THE CALCULATED LOCATION OF THE CORNER.

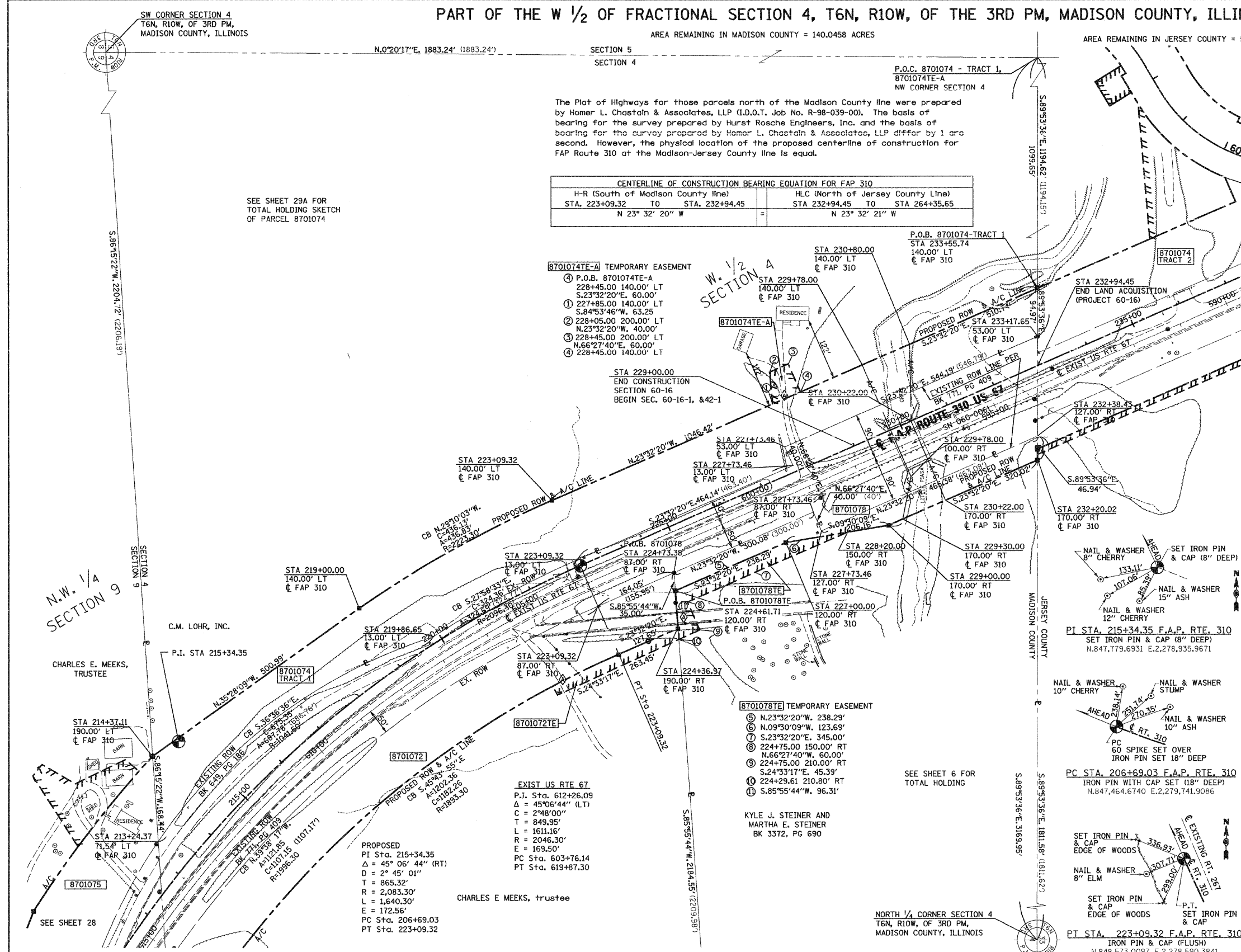
**PI STA. 215+34.35 F.A.P. RTE. 310**  
SET IRON PIN & CAP (8" DEEP)  
N.847,779.6931 E.2,278,935.9671

**PC STA. 206+69.03 F.A.P. RTE. 310**  
IRON PIN WITH CAP SET (18" DEEP)  
N.847,464.6740 E.2,279,741.9086

**NORTHWEST CORNER SECTION 9**  
NORTHWEST CORNER SECTION 9 T6N R10W 3RD PM  
RECORDED 07-02-2001  
DOC. 2001R33215  
N.847,595.2857 E.2,276,933.3670

**NORTH 1/4 CORNER SECTION 4**  
NORTH 1/4 CORNER SECTION 4 T6N R10W 3RD PM  
RECORDED 07-02-2001  
DOC. 2001R33214  
N.849,472.5937 E.2,280,114.4248

COORDINATES SHOWN HEREON ARE BASED ON SURVEY CONTROL DATA AS PROVIDED BY THE ILLINOIS DEPARTMENT OF TRANSPORTATION.



PARCEL NO.	OWNER	TOTAL HOLDING	R.O.W. REQUIRED	PREVIOUSLY DEDICATED	REMAINDER	EASEMENTS		EASEMENT PURPOSE	PERMANENT TAX NUMBER	PROPERTY ACQUIRED BY
						TEMP	PERM			
8701074	KIMATERIALS, INC.	MA-3937.0 MADISON CO 462.2 AC JERSEY CO 4.8475 AC (8.2 AC)	MADISON CO TRACT 1 4.8475 AC 211,158 SF	N/A	MADISON CO 457.35 AC 19,922,274 SF	MADISON CO TE-A 0.0689 AC 3,000 SF	N/A	ENTRANCE CONST	24-1-01-04-00-000-001.001 42-07-212-018-00	
8701078	KYLE J. STEINER AND MARTHA E. STEINER AS TENANTS IN COMMON	MA-1416.0 29,6529 AC 1,291,682 SF	0.6514 AC 28,375 SF	N/A	29.0015 AC 1,263,307 SF	0.2570 AC 11,196 SF	N/A	ENTRANCE CONST	24-1-01-04-00-000-001.002 24-1-01-04-00-000-001.002	

COORDINATE TABLE			
STATION	OFFSET	NORTH	EAST
213+24.37	71.54' LT	847,739.2463	2,279,133.3810
214+37.11	190.00' LT	847,728.2475	2,278,965.2960
219+00.00	140.00' LT	848,136.2716	2,278,674.5867
219+86.65	13.00' LT	848,281.3594	2,278,730.6240
223+09.32	13.00' LT	848,567.8175	2,278,578.4660
223+09.32	140.00' LT	848,517.0979	2,278,462.0335
223+09.32	190.00' RT	848,648.8900	2,278,764.5741
224+73.38	87.00' RT	848,758.1561	2,278,604.6274
224+61.71	120.00' RT	848,760.6410	2,278,639.5400
227+00.00	120.00' RT	848,979.1026	2,278,544.3742
227+73.46	13.00' LT	848,993.3327	2,278,393.1040

COORDINATE TABLE			
STATION	OFFSET	NORTH	EAST
227+73.46	127.00' RT	849,049.2445	2,278,521.4545
227+73.46	53.00' LT	848,977.3579	2,278,356.4320
227+73.46	87.00' RT	849,033.2697	2,278,484.7830
229+00.00	170.00' RT	849,182.4290	2,278,510.3397
233+17.65	53.00' LT	849,476.2697	2,278,139.0974
233+55.74	140.00' LT	849,476.4465	2,278,044.1240
232+38.43	127.00' RT	849,475.9041	2,278,335.5940
232+20.02	170.00' RT	849,475.8188	2,278,382.5339
223+09.32	87.00' RT	848,607.7545	2,278,670.1450
224+36.97	190.00' RT	848,765.9120	2,278,713.5970
232+94.45	¢	849,476.1621	2,278,196.9547

**HR** HURST-ROSCHER ENGINEERS, INC.  
1400 E. TREMONT STREET  
P.O. BOX 130  
HILLSBORO, ILLINOIS 62406  
TEL 217 532-3969; FAX 217 532-2312  
PROFESSIONAL DESIGN FIRM NO. 184-000298

**ILLINOIS DEPARTMENT OF TRANSPORTATION**  
PLAT OF HIGHWAYS  
FAP ROUTE 310 (US 67)  
SECTION 60-16  
MADISON COUNTY  
JOB NO. R-98-001-97  
STATION 212+00 TO STATION 241+00  
100' 0 100' 200'  
SCALE 1" = 100'  
SHEET 29 OF 29  
ILLINOIS DEPARTMENT OF TRANSPORTATION  
DIVISION OF HIGHWAYS/DISTRICT 8  
1102 EASTPORT PLAZA DRIVE  
COLLINGSVILLE, ILLINOIS 62234-6198