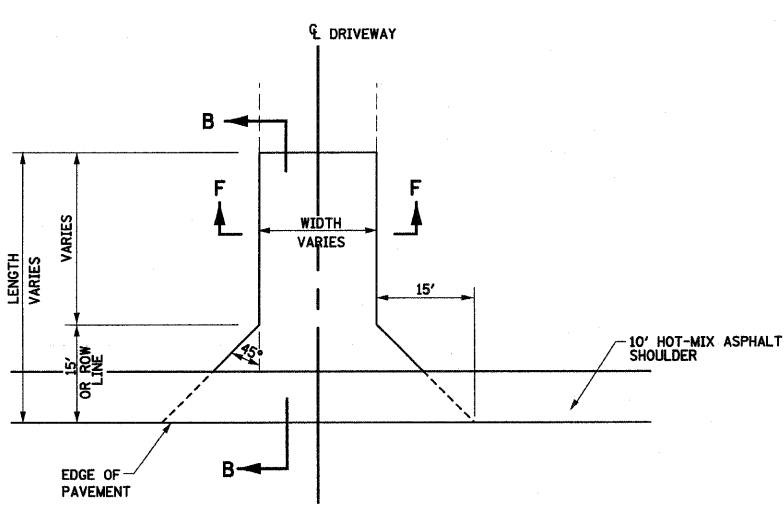


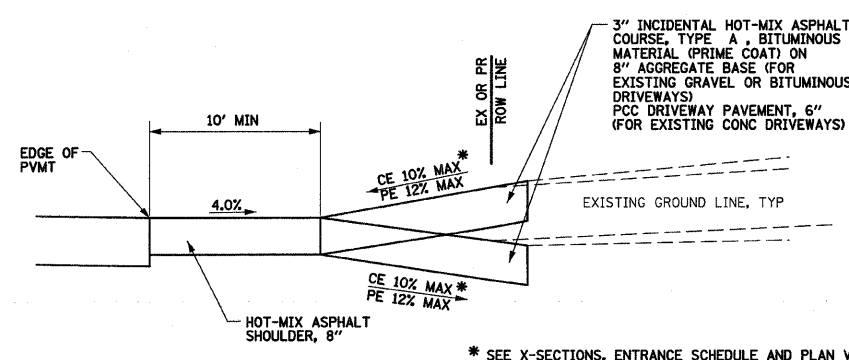
ENTRANCE SCHEDULE													
TYPE	SIDE / STATION	SURFACE EXISTING	SURFACE PROPOSED	WIDTH EXISTING	WIDTH PROPOSED	LENGTH	AGGREGATE BASE COURSE, TYPE A	AGGREGATE SURFACE COURSE, TYPE A	INCIDENTAL HOT-MIX ASPHALT SURFACING	PCC DRIVEWAY PAVEMENT	PCC DRIVEWAY PAVEMENT	DRIVEWAY PAVEMENT REMOVAL	
							8"	6"	3"	6"	8"		
							TON	TON	TON	SQ YD		SQ YD	
<b>US 67 - IL 111 (Godfrey Road)</b>													
CE	Lt	169+69.00	CONC/BIT	BIT	10'	24'	29'	22.7		8.6	37.1		70.3
CE	Rt	174+90.00	O&C	BIT	23'	31'	25'	20.4		7.7	45.8		
CE	Lt	175+41.00	CONC	CONC	23'	31'	24'				98.3		93.7
CE	Rt	46+08.00	O&C	BIT	x	31'	21'	16.3		6.2	44.8		
EX ENT	Rt	53+75.00	BIT	x	34'	x	x						315.4
EX ENT	Lt	58+60.00	CONC/BIT	x	30'	x	x						952.3
SUBTOTALS							59	0	22	226	0		1432
<b>FAP Route 310</b>													
EX ENT	Rt	104+95.00	CONC	x	25'	x	x						75.2
FE	Lt	111+94.00	AGG	AGG	8'	12'	51'				22.7		
FE	Lt	114+50.00	x	AGG	x	24'	50'				44.4		
EX ENT	Rt	115+80.00	CONC	x	35'	x	x						63.4
FE	Lt	119+00.00	x	AGG	x	24'	58'				51.6		
EX ENT	Rt	119+75.00	CONC	x	35'	x	x						65.4
FE	Lt	121+50.00	AGG	AGG	x	24'	58'				51.6		
SERVICE DR	Lt	125+86.00	AGG	BIT	12'	24'	68'	99.5		37.6			
FE	Rt	128+50.00	x	AGG	x	24'	38'				33.8		
FE	Lt	130+80.00	AGG	AGG	12'	24'	61'				54.2		
FE	Rt	136+80.00	x	AGG	x	24'	61'				54.2		
PE	Lt	141+97.00	x	BIT	15'	14'	56.4'	50.1					
PE	Lt	143+08.00	AGG	BIT	30'	24'	79'	93.0					
PE	Lt	144+28.00	AGG	BIT	23'	24'	95'	110.8					
PE	Rt	148+46.82	x	BIT	x	24'	117'	138.5					
FE	Lt	170+40.00	x	AGG	x	24'	78'				69.3		
FE	Lt	179+50.00	x	AGG	x	24'	58'				51.6		
FE	Rt	184+50.00	AGG	AGG	9'	16'	137'				81.2		
PE	Rt	189+21.50	AGG	BIT	15'	16'	20'	15.7		5.9			
PE	Rt	191+75.00	AGG	BIT	15'	16'	20'	15.4		5.8			
PE	Rt	193+79.00	AGG	BIT	12'	16'	14.5'	11.5		4.3			
PE	Rt	197+82.00	BIT	BIT	25'	24'	14.5'	17.2		6.5			101.3
PE	Rt	199+33.00	AGG	BIT	16'	16'	12.5'	9.9		3.7			
PE	Rt	200+80.00	AGG	BIT	12'	14'	9.5'	6.6		2.5			
EX ENT	Rt	200+88.00	CONC	x	20'	x	x						140.0
PE	Rt	202+34.00	AGG	BIT	15'	16'	40'	31.5		11.9			
EX ENT	Rt	203+68.00	CONC	x	24'	x	x						38.2
FE	Rt	207+00.00	x	AGG	x	15'	130'				72.2		
PE	Lt	212+26.00	AGG	BIT	12'	12'	283'	183.6		69.4			
PE	Rt	221+80.00	CONC	CONC	24'	30'	124'						620.3
PE	Rt	221+80.00	CONC	CONC	24'	24'	346'			1499.7			
FE	Rt	221+80.00	x	AGG	12'	12'	28'	11.0		4.1			
PE	Lt	227+89.00	AGG	BIT	10'	15'	135'	100.1		37.9			
CONNECTOR	Lt	227+89.00	x	BIT	12'	41'		35.9		13.6			
SUBTOTALS							930	599	352	1500	0		1104
<b>Benjamin Drive</b>													
PE	Lt	11+15.00	x	BIT	x	16'	54'	35.5		13.4	28.1		
SUBTOTALS							36	0	13	28	0		0
<b>Davis Lane</b>													
PE	Rt	7+00.00	AGG	BIT	24'	24'	111'	145.0		54.8			
PE	Lt	8+50.00	x	BIT	11'	12'	118'	81.0		30.6			
SUBTOTALS							226	0	85	0	0		0
<b>Beuttel Road</b>													
PE	Rt	6+35.00	AGG	BIT	x	24'	27'	40.5		15.3			
PE	Lt	7+15.00	x	BIT	x	16'	204'	169.9		64.2			
PE	Rt	7+15.00	x	BIT	16'	168'		140.6		53.1			
SUBTOTALS							351	0	133	0	0		0
<b>Lagemann Road</b>													
PE*	Lt	16+50.00	CONC	CONC	12'	12'	217'	6.9		2.6	306.3		119.2
PE	Rt	16+50.00	x	AGG	10'	12'	289'						
SERVICE DR	Lt	19+61.50	x	CONC	x	18'	345'				705.7		
PE	Lt	21+00.00	CONC	CONC	18'	18'	27'				75.6		36.8
PE	Lt	21+36.77	AGG	BIT	12'	12'	31'	28.1		10.6			
PE	Lt	22+50.00	BIT	BIT	12'	12'	35'	29.2		11.1			50.7
PE	Lt	23+90.76	AGG	BIT	12'	12'	31'	26.9		10.2			
SUBTOTALS							91	129	34	382	706		207
<b>Access Road 1</b>													
CE	Lt	12+62.00	x	BIT	x	24'	33'	47.6		17.8			
CE	Lt	15+00.00	x	BIT	x	24'	33'	46.9		17.7			
CE	Lt	17+51.00	x	BIT	x	30'	54'	108.0		40.8			
CE	Lt	18+27.00	AGG	BIT	20'	24'	36'	76.3		28.8			
PE	Lt	29+00.00	x	BIT	x	24'	38'	53.5		20.2			
FE	Rt	49+50.00	x	AGG	x	24'	50'	16.7		6.3	35.6		
PE	Rt	53+78.00	AGG	BIT	12'	14'	28'	27.9		10.5			
FE	Rt	59+50.00	x	AGG	x	24'	28'	16.8		6.3	16.0		
PE	Rt	64+66.00	AGG	BIT	10'	12'	28'	23.5		8.9			
PE	Rt	67+39.00	AGG	BIT	20'	20'	28'	36.1		13.7			
PE	Rt	72+28.00	BIT	BIT	9'	12'	37'	30.1		11.4			115.9

ENTRANCE SCHEDULE													
TYPE	SIDE / STATION	SURFACE EXISTING	SURFACE PROPOSED	WIDTH EXISTING	WIDTH PROPOSED	LENGTH	AGGREGATE BASE COURSE, TYPE A	AGGREGATE SURFACE COURSE, TYPE A	INCIDENTAL HOT-MIX ASPHALT SURFACING	PCC DRIVEWAY PAVEMENT	PCC DRIVEWAY PAVEMENT	DRIVEWAY PAVEMENT REMOVAL	
							8"	6"	3"	6"	8"		
							TON	TON	TON	SQ YD		SQ YD	
TURNAROUND**	Rt	73+22.00	BIT	BIT	16'	16'	63'						
EX ENT	Lt	73+29.00	BIT	x	16'	x	x	50.2		38.2			486.1
SUBTOTALS							534	52	221	0	0		602
<b>Ingham Road</b>													
PE	Lt	11+16.00	BIT	BIT	16'	24'	21'	27.2		10.3			42.3
SUBTOTALS							27	0	10	0	0		42
<b>Access Road 2</b>													
FE	Lt	11+50.00	x	AGG	x	24'	42'	16.8		6.3			
FE	Lt	14+00.00	x	AGG	x	24'	42'	16.8		6.3			
FE	Lt	19+00.00	x	AGG	x	24'	52'	16.8		34.7			
PE	Lt	21+92.00	x	BIT	10'	12'	52'	40.0		15.1			
CE	Lt	22+42.00	x	BIT	x	30'	49'	80.8		30.5			
CE	Lt	24+00.00	x	BIT	x	24'	50'	67.8		25.6			
PE	Lt	25+02.50	x	BIT	9'	12'	52'	39.0		14.7			
FE	Lt	39+00.00	x	AGG	x	24'	37'	16.8		6.4			
PE	Cl	41+07.65	BIT	BIT	14'	14'	185'	140.0		52.9			403.6
TURNAROUND**	BOTH	41+07.65	x	BIT	x	VAR	VAR	76.1		57.7			
SUBTOTALS							511	116	222	0	0		404
<b>Access Road 3</b>													
FE	Rt	13+00.00	x	AGG	x	24'	47'	16.8		32.9			
FE	Rt	14+00.00	x	AGG	x	24'	34'	16.8		21.3			
CE	Rt	17+50.00	x	BIT	24'	24'	32'	47.6		18.0			
CE	Rt	19+00.00	x	BIT	32'	32'	32'	59.1		22.3			
CE	Rt	20+50.00	x	BIT	x	32'	32'	59.1		22.3			
SUBTOTALS							199	54	75	0	0		0
<b>Ramp A</b>													
EX ENT	Lt	15+00.00	CONC	x		x	x						94.6
SUBTOTALS							0	0	0	0	0		95
<b>Ramp B</b>													
EX ENT	Lt	13+80.00	BIT	x		x	x						213.4
SUBTOTALS							0	0	0	0	0		213
TOTALS							2965	950	1169	2136	706		4099

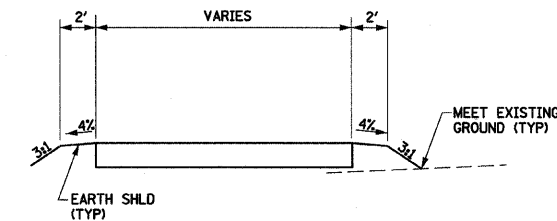
- \* 309 SY OF AGGREGATE BASE COURSE, TYPE B 4" TO BE USED AS A BASE FOR THIS DRIVE
- \*\* INCIDENTAL BITUMINOUS SURFACING TO BE A DEPTH OF 6"
- SEE TEMPORARY ENTRANCE SCHEDULE FOR ADDITIONAL AGGREGATE SURFACE COURSE QUANTITY



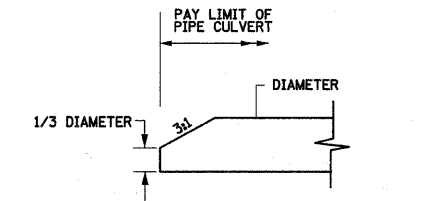
PLAN  
PRIVATE ENTRANCE WITH SHOULDER



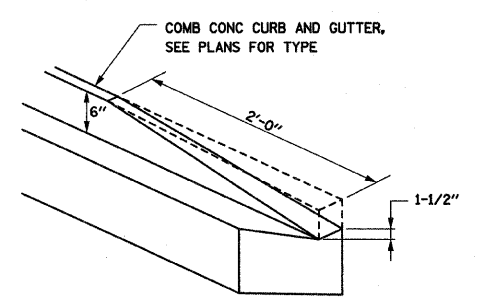
SECTION B-B



SECTION F-F



SECTION VIEW OF MITERED CULVERT END  
(NO SCALE)



TAPER DETAIL FOR DEPRESSED CURB  
(NO SCALE)

ILLINOIS DEPARTMENT OF TRANSPORTATION

## ENTRANCE DETAILS

SCALE: NO SCALE  
DATE: 09-04-09  
DRAWN BY: U.J.  
CHECKED BY: J.J.C.

REVISIONS	NAME	DATE