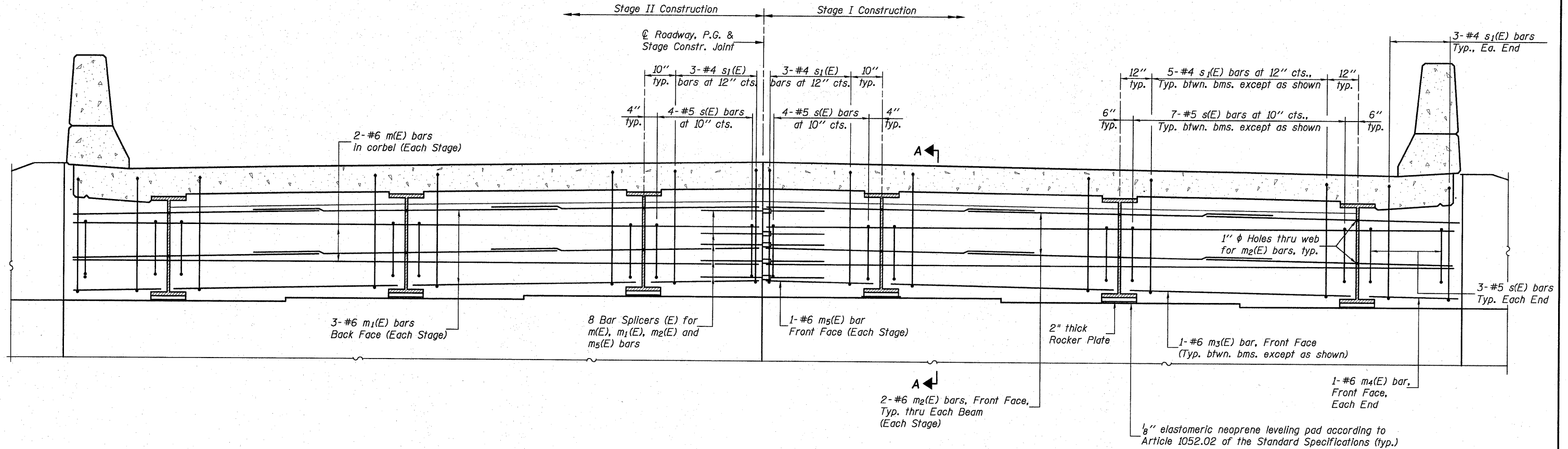


03/00/04-76410-12-DIAP.DGN SEPT. 1, 2009

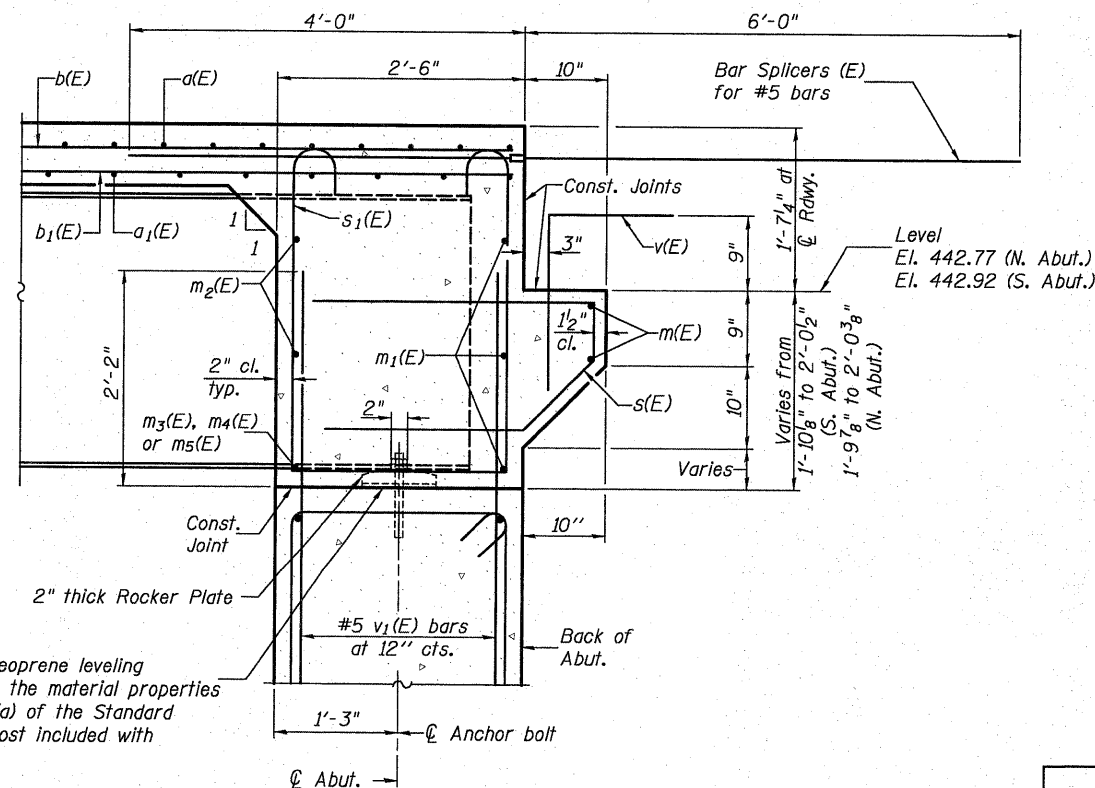
STATE OF ILLINOIS
DEPARTMENT OF TRANSPORTATION



DIAPHRAGM ELEVATION AT NORTH ABUTMENT
(Looking North)

Notes:
Reinforcement bars in diaphragm are billed with superstructure on sheet 11 of 21.
Concrete in diaphragm is included with Concrete Superstructure on sheet 11 of 21.
For details of bars s(E) & s₁(E) see sheet 11 of 21.
The s(E) and s₁(E) bars shall be placed parallel to the beams. Spacing for these bars shall be at right angles to the beams.

MIN. BAR LAP
#6 bar = 2'-9"



SECTION A-A

1/8" elastomeric neoprene leveling pad according to the material properties of Art. 1052.02(a) of the Standard Specifications. Cost included with Structural Steel.

INTEGRAL ABUTMENT DIAPHRAGM DETAILS

DESIGNED	B.G.H.
CHECKED	L.D.G.
DRAWN	K.H.L.
CHECKED	B.G.H.

SHEET NO. 12	F.A.S. RTE.	SECTION	COUNTY	TOTAL SHEETS	SHEET NO.
	739	1-2BR	GREENE	150	94
21 SHEETS	S.N. 031-0040		CONTRACT NO. 76410		
	FED. ROAD DIST. NO. _ ILLINOIS FED. AID PROJECT				

H.M. & G. NO. 6020.161