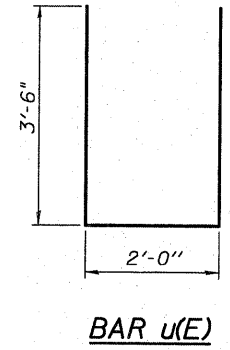
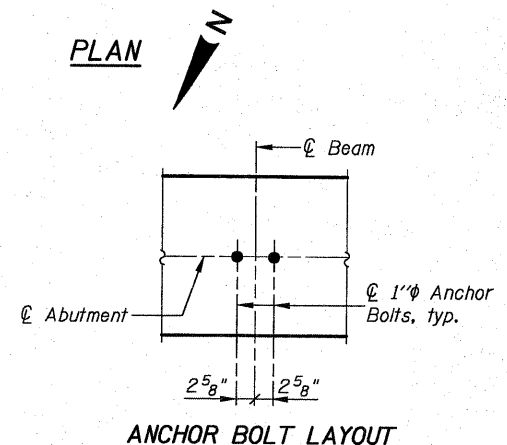
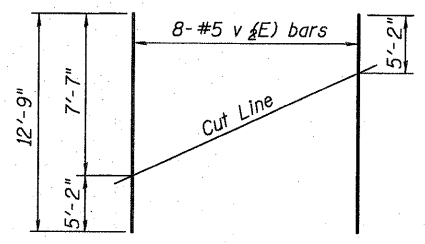
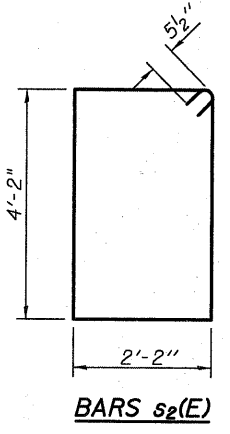
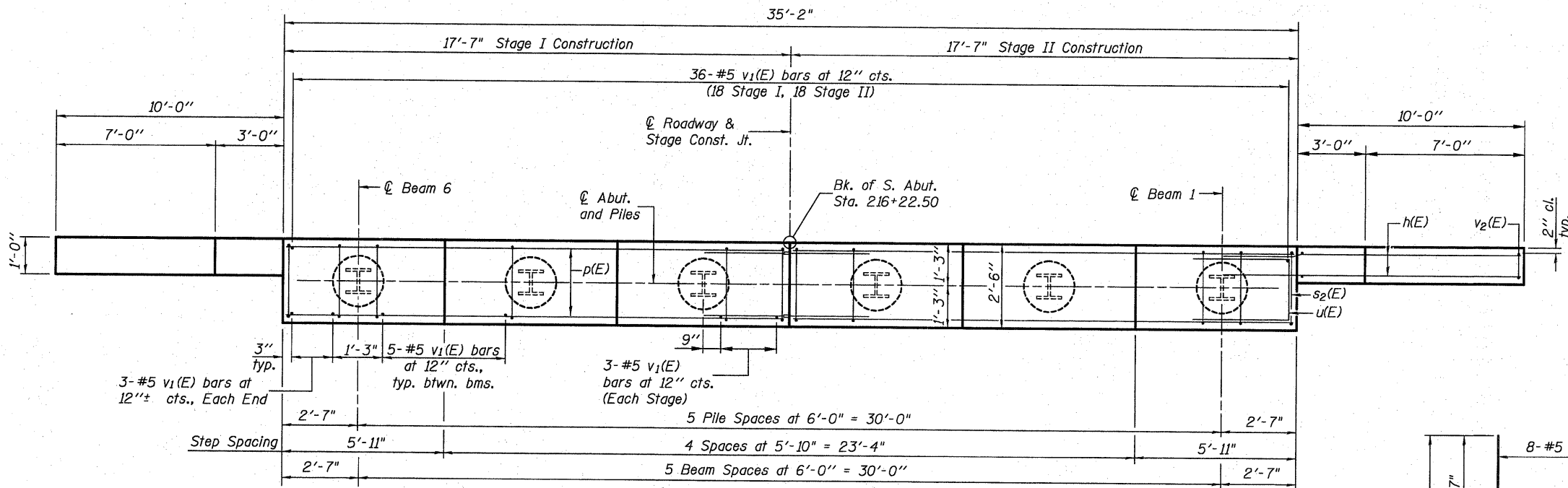
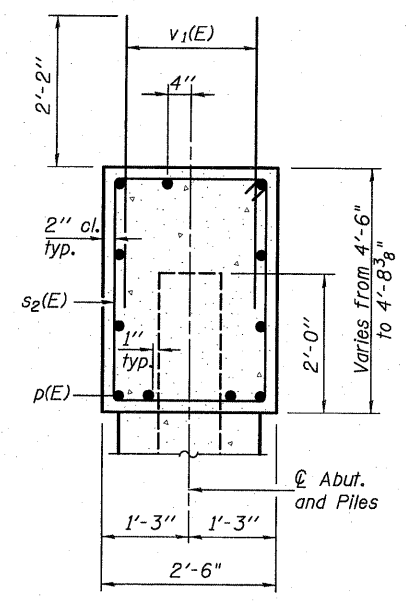
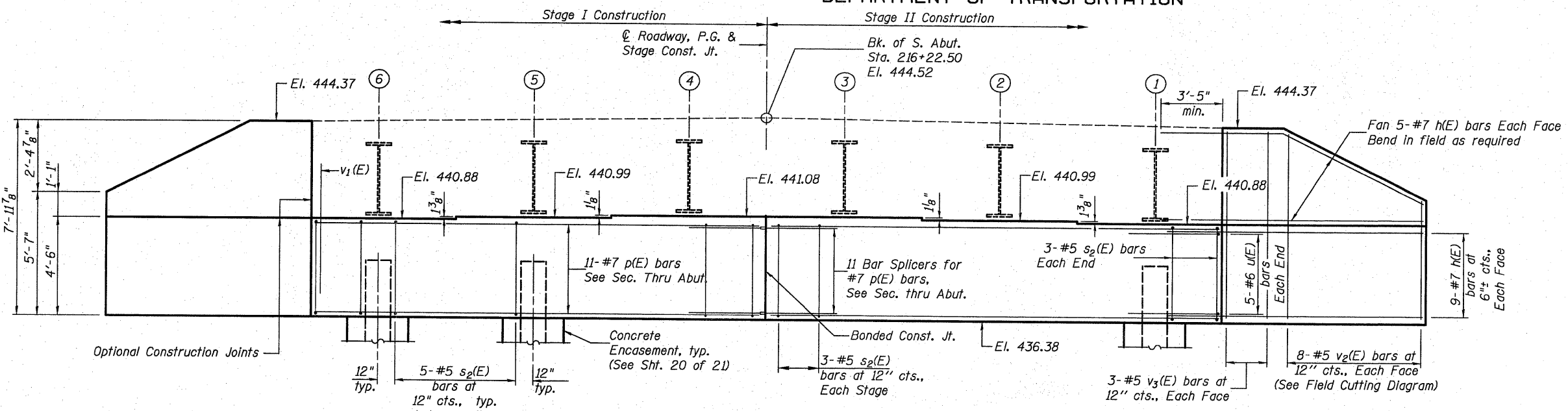


0150040-76410-17-SABT.DWG NOV. 30, 2009

**STATE OF ILLINOIS
DEPARTMENT OF TRANSPORTATION**

Notes:
Four steps monolithically with cap.



BILL OF MATERIAL

Bar No.	Size	Length	Shape
h(E)	#7	14'-0"	—
p(E)	#7	17'-3"	—
s ₂ (E)	#5	13'-7"	□
u(E)	#6	9'-0"	□
v ₁ (E)	#5	4'-4"	—
v ₂ (E)	#5	12'-9"	—
v ₃ (E)	#5	7'-7"	—
Structure Excavation	Cu. Yd.	113	
Concrete Structures	Cu. Yd.	20.3	
Reinforcement Bars, Epoxy Coated	Pound	3,590	
Furnishing Steel Piles HP 14x73	Foot	405	
Driving Piles HP 14x73	Foot	405	
Test Pile Steel HP 14x73	Each	1	
Concrete Encasement	Cu. Yd.	3.3	

For details of Bar Splicers, see sht. 19 of 21.
For details of piles and Concrete Encasement, see sht. 20 of 21.

PILE DATA

Type: HP 14x73
Nominal Required Bearing: 420 kips
Factored Resistance Available: 210 kips
Est. Length: 81 feet
No. Production Piles: 5
No. Test Piles: 1

DESIGNED	B.G.H.
CHECKED	L.D.G.
DRAWN	K.H.L.
CHECKED	B.G.H.

AI-0 10-1-08

SOUTH ABUTMENT

SHEET NO. 17 21 SHEETS	F.A.S. RTE. 739	SECTION 1-2BR	COUNTY GREENE	TOTAL SHEETS 150	SHEET NO. 99
	S.N. 031-0040		CONTRACT NO. 76410		
FED. ROAD DIST. NO.		ILLINOIS FED. AID PROJECT			

H.M. & G. NO. 6020.161