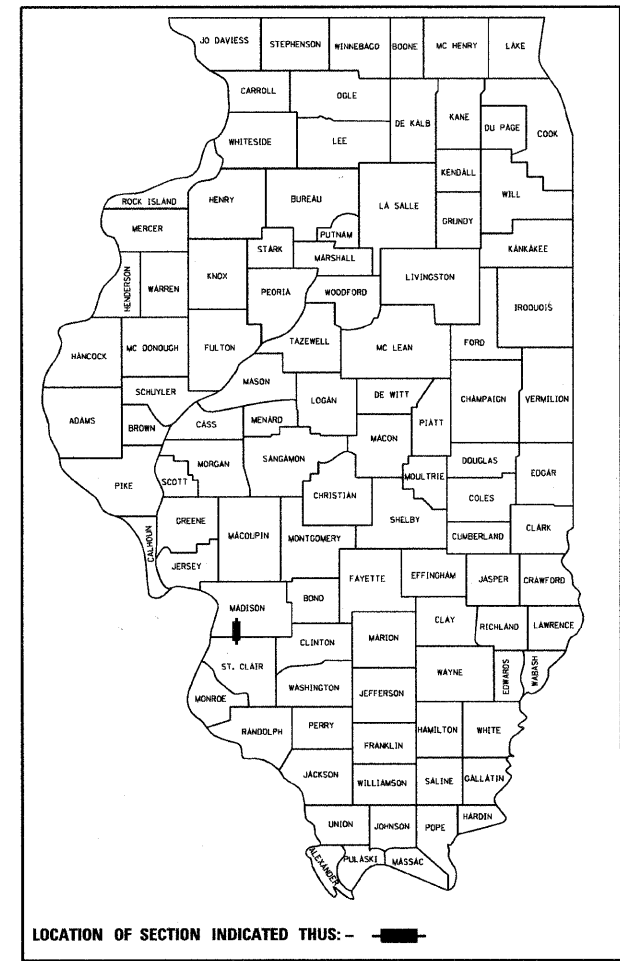


F.A.P. RTE.	SECTION	COUNTY	TOTAL SHEETS	SHEET NO.
600	60-(30,31,128)-1	MADISON/ST. CLAIR	399	1
		ILLINOIS	CONTRACT NO. 76830	

* 399 + 6 = 405

D-98-109-05



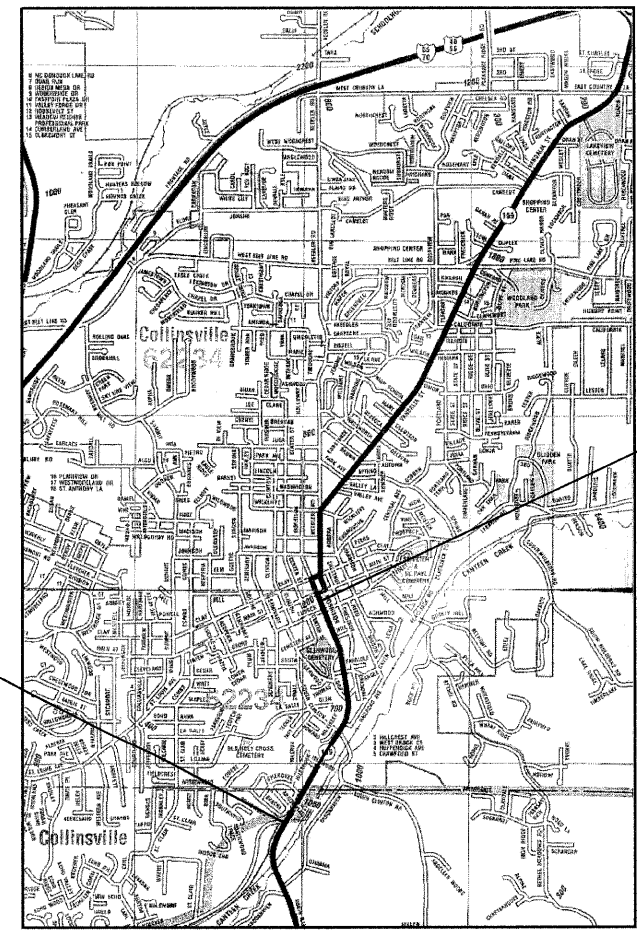
LOCATION OF SECTION INDICATED THUS: - ■ -

STATE OF ILLINOIS DEPARTMENT OF TRANSPORTATION DIVISION OF HIGHWAYS

PROPOSED HIGHWAY PLANS

**FAP ROUTE 600 (IL 159)
SECTION 60-(30,31,128)-1
FEDERAL PROJECT # ACNHF-0600(060)
WIDENING AND RESURFACING
MADISON AND ST. CLAIR COUNTIES**

C-98-086-09

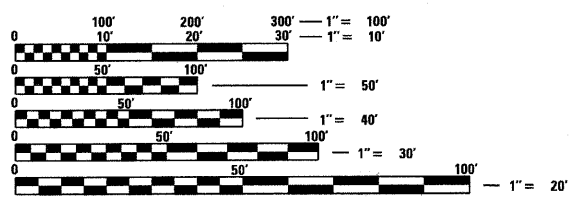


BEGIN PROJECT
STA 102+00.00
LAT = 38.6563
LONG = -89.9873

END PROJECT
STA 156+02.00
LAT = 38.6705
LONG = -89.9898

FOR INDEX OF SHEETS, SEE SHEET NO. 2

DESIGN DESIGNATION: OTHER PRINCIPLE ARTERIAL



FULL SIZE PLANS HAVE BEEN PREPARED USING STANDARD ENGINEERING SCALES. REDUCED SIZED PLANS WILL NOT CONFORM TO STANDARD SCALES. IN MAKING MEASUREMENTS ON REDUCED PLANS, THE ABOVE SCALES MAY BE USED.

J.U.L.I.E.
JOINT UTILITY LOCATION INFORMATION FOR EXCAVATION
1-800-892-0123
OR 811

PROJECT ENGINEER: PATTI LEBEAU (618) 346-3179
PROJECT MANAGER: CHERYL KEPLAR (618) 346-3186

CONTRACT NO. 76830

LOCATION MAP
SCALE: 1" = 2000'

GROSS LENGTH = 5402 FT. = 1.02 MILE
NET LENGTH = 5402 FT. = 1.02 MILE



Victor A. Moder
SIGNATURE DATE

James C. Christman
SIGNATURE DATE 8/24/09

SHEETS:
LICENSE EXPIRES: 11/30/09

SHEETS: 135-1475, 229-235
LICENSE EXPIRES: 11/30/09

PLANS PREPARED BY:
VOLKERT
103 LANTER COURT
COLLINSVILLE, IL 62234

STATE OF ILLINOIS
DEPARTMENT OF TRANSPORTATION
DIVISION OF HIGHWAYS

SUBMITTED *October 15* 20 *09*

Mary C. Jans
DEPUTY DIRECTOR OF HIGHWAYS, REGION 5 ENGINEER

January 29 20 *10*
Scott B. Stitt, P.E.
ACTING ENGINEER OF DESIGN AND ENVIRONMENT

January 29 20 *10*
Christine M. Reed
DIRECTOR OF HIGHWAYS, CHIEF ENGINEER

**PRINTED BY THE AUTHORITY
OF THE STATE OF ILLINOIS**