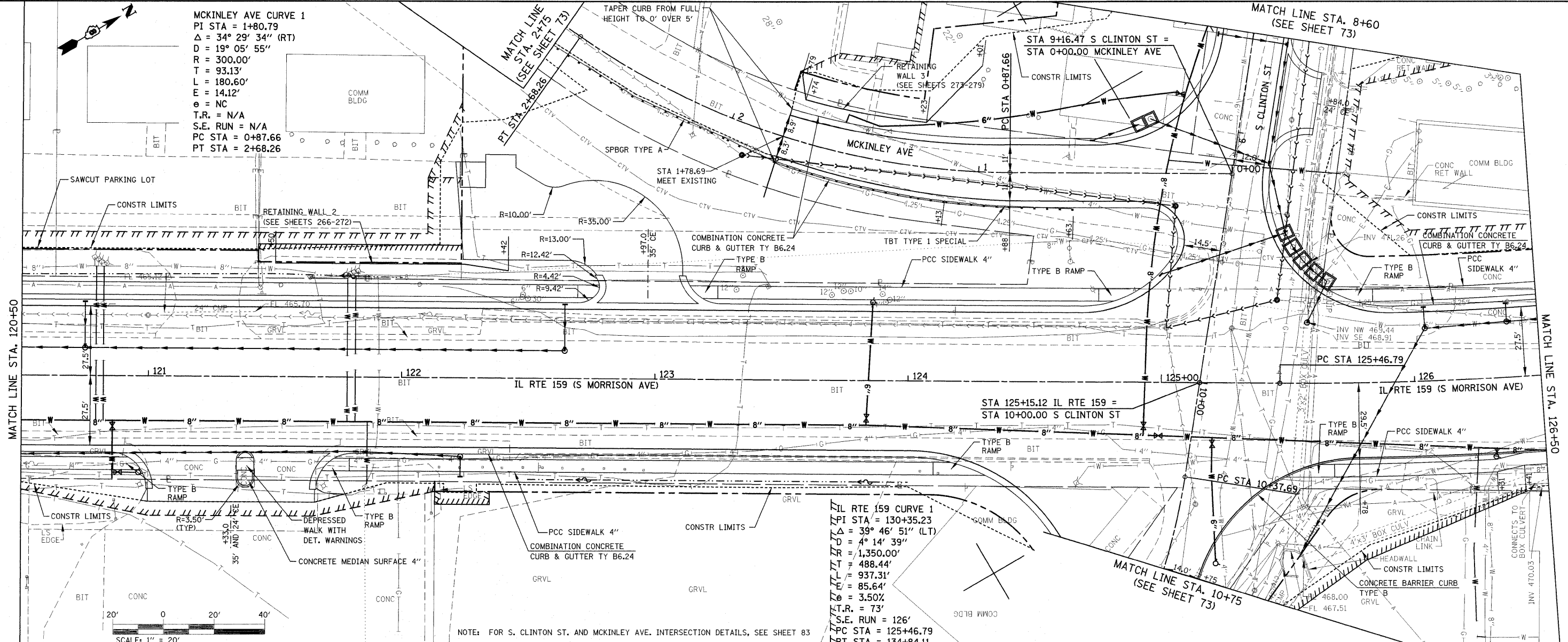


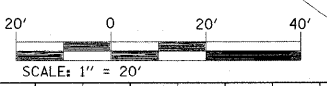
PLAN	DATE
BY	
REVISIONS	
NO.	
DATE	
BY	
DESCRIPTION	
NO.	
DATE	

PROFILE	DATE
BY	
REVISIONS	
NO.	
DATE	
BY	
DESCRIPTION	
NO.	
DATE	

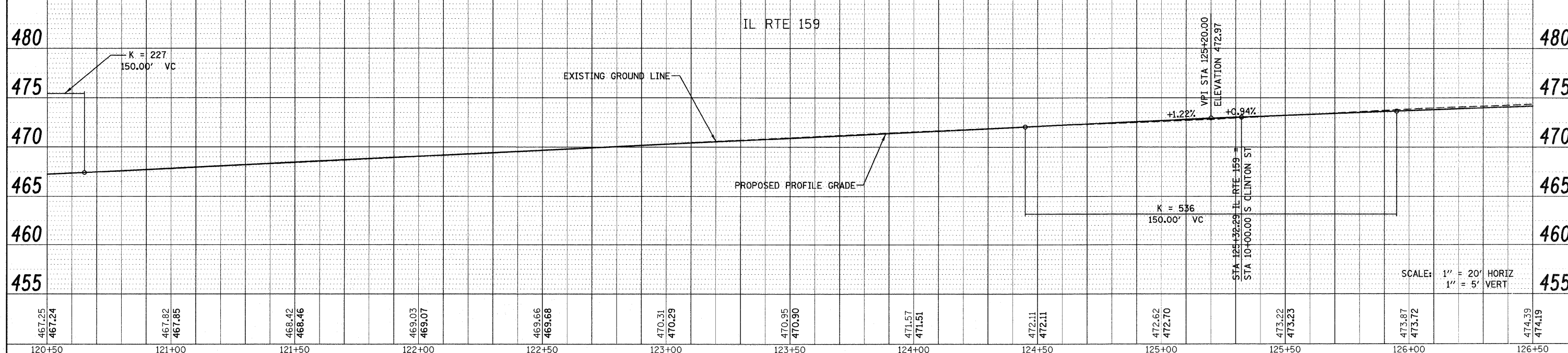
MCKINLEY AVE CURVE 1
 PI STA = 1+80.79
 $\Delta = 34^\circ 29' 34''$ (RT)
 $D = 19^\circ 05' 55''$
 $R = 300.00'$
 $T = 93.13'$
 $L = 180.60'$
 $E = 14.12'$
 $\theta = NC$
 T.R. = N/A
 S.E. RUN = N/A
 PC STA = 0+87.66
 PT STA = 2+68.26



IL RTE 159 CURVE 1
 PI STA = 130+35.23
 $\Delta = 39^\circ 46' 51''$ (LT)
 $D = 4^\circ 14' 39''$
 $R = 1,350.00'$
 $T = 488.44'$
 $L = 937.31'$
 $E = 85.64'$
 $\theta = 3.50\%$
 T.R. = 73'
 S.E. RUN = 126'
 PC STA = 125+46.79
 PT STA = 134+84.11



NOTE: FOR S. CLINTON ST. AND MCKINLEY AVE. INTERSECTION DETAILS, SEE SHEET 83



FILE NAME =	USER NAME = default	DESIGNED -	REVISED -	STATE OF ILLINOIS DEPARTMENT OF TRANSPORTATION	PLAN/PROFILE IL ROUTE 159	F.A.P. RTE.	SECTION	COUNTY	TOTAL SHEETS	SHEET NO.	
F:\Projects\1513501\CADD\GDG\1513501-1513501-1.dgn	pnrf.dgn	DRAWN -	REVISED -			600	60-(30,31,128)-1	MADISON/ST. CLAIR	399	61	
PLOT SCALE = 20,0000' / IN.		CHECKED -	REVISED -			CONTRACT NO. 76830					
PLOT DATE = 4/30/2010		DATE -	REVISED -			ILLINOIS FED. AID PROJECT					