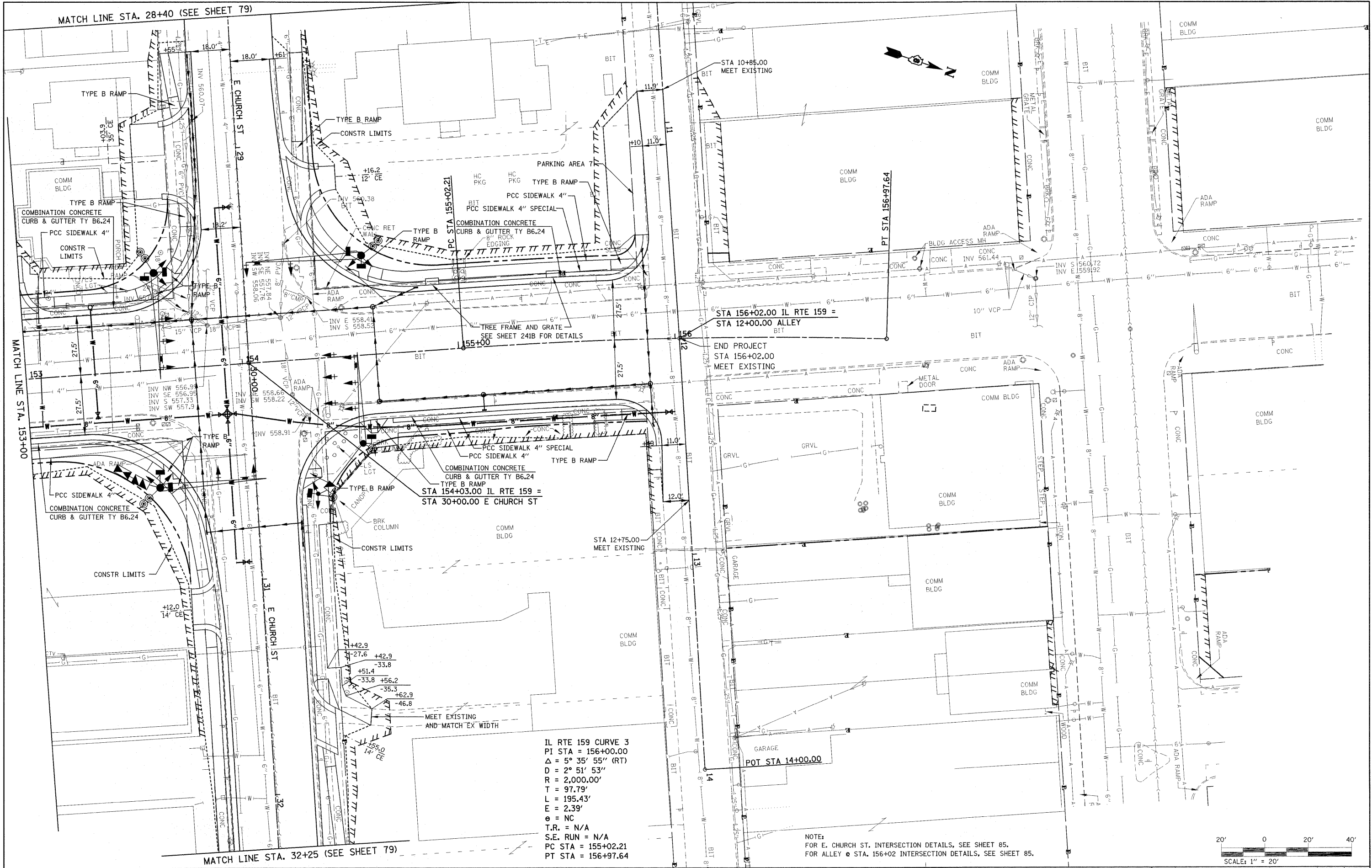


MATCH LINE STA. 28+40 (SEE SHEET 79)

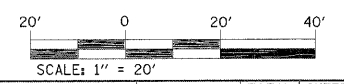


MATCH LINE STA. 153+00

MATCH LINE STA. 32+25 (SEE SHEET 79)

IL RTE 159 CURVE 3
 PI STA = 156+00.00
 $\Delta = 5^\circ 35' 55''$ (RT)
 $D = 2^\circ 51' 53''$
 $R = 2,000.00'$
 $T = 97.79'$
 $L = 195.43'$
 $e = 2.39'$
 $\theta = NC$
 $T.R. = N/A$
 $S.E. RUN = N/A$
 $PC STA = 155+02.21$
 $PT STA = 156+97.64$

NOTE:
 FOR E. CHURCH ST. INTERSECTION DETAILS, SEE SHEET 85.
 FOR ALLEY @ STA. 156+02 INTERSECTION DETAILS, SEE SHEET 85.



FILE NAME =
 P:\Projects\51350\1\CADD\DN\0876830-shd\p\prf.dgn

USER NAME = default
 PLOT SCALE = 20.0000 / IN.
 PLOT DATE = 4/30/2010

DESIGNED -
 DRAWN -
 CHECKED -
 DATE -

REVISED -
 REVISED -
 REVISED -
 REVISED -

**STATE OF ILLINOIS
 DEPARTMENT OF TRANSPORTATION**

**PLAN
 IL ROUTE 159**
 SCALE: 1" = 20'
 SHEET NO. 14 OF 24 SHEETS
 STA. 153+00.00 TO STA. 156+02.00

F.A.P. RTE.	SECTION	COUNTY	TOTAL SHEETS	SHEET NO.
600	60-(30,31,128)-1	MADISON/ST. CLAIR	399	70
CONTRACT NO. 76830				
FED. ROAD DIST. NO.		ILLINOIS FED. AID PROJECT		