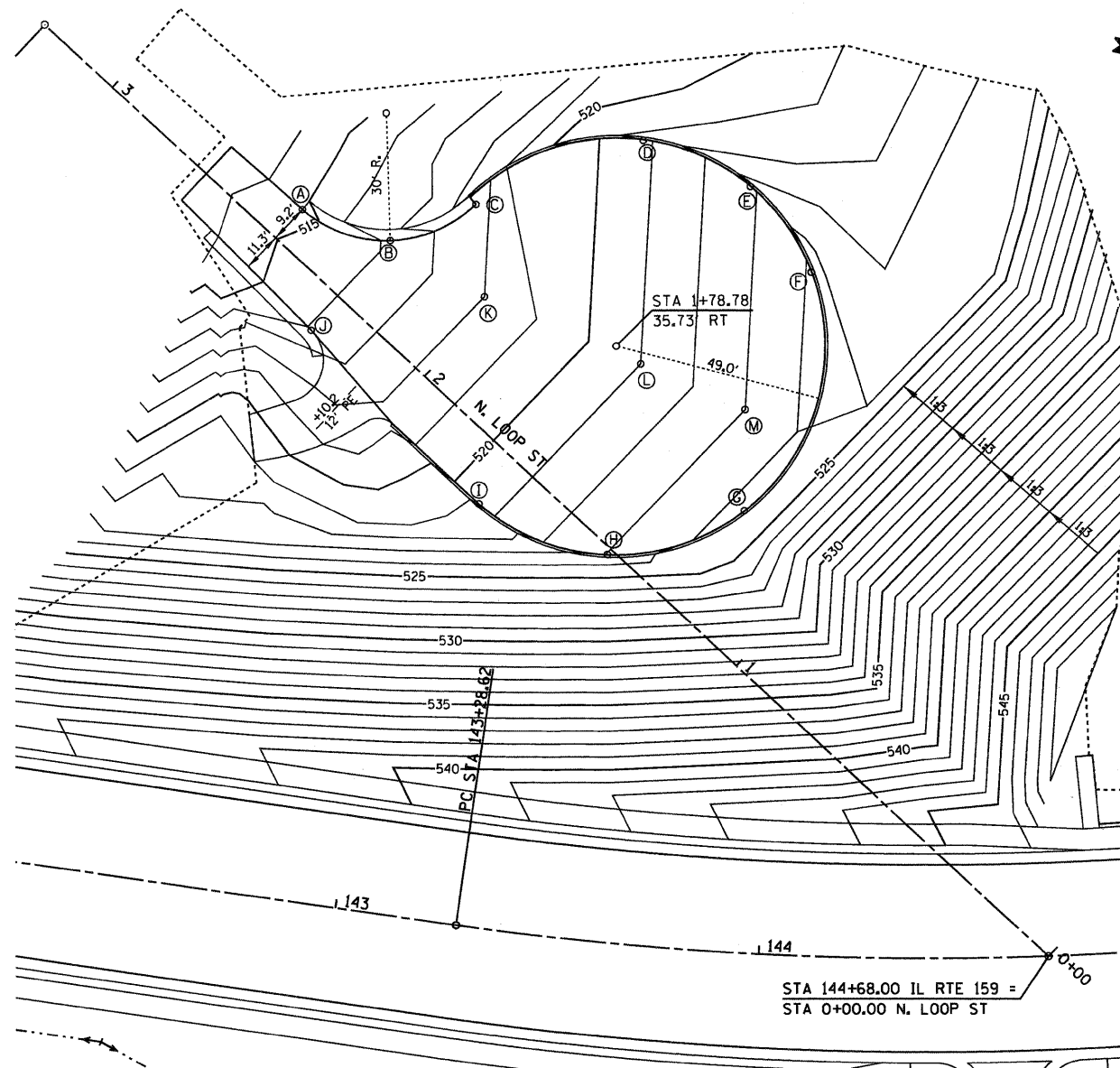


GRADING DETAIL - ANGLE ST.

	STATION	OFFSET	ELEVATION
A	0+65.72	10.00' RT	544.53
B	0+64.23	10.00' RT	544.51
C	0+59.40	10.00' LT	543.85
D	0+65.72	10.00' LT	544.13
E	1+18.77	10.00' LT	548.43
F	1+30.00	10.00' LT	548.77
G	1+30.00	10.00' RT	549.21
H	1+16.32	16.12 RT	548.75
I	1+10.72	30.00' RT	548.67
J	1+10.72	40.00' RT	548.77
K	0+90.72	40.00' RT	548.77
L	0+83.21	43.09' RT	550.91
M	0+90.72	30.00' RT	547.84
N	0+84.86	15.86' RT	546.38
O	0+75.45	19.13' RT	547.42
P	0+70.72	10.00' RT	544.92



GRADING DETAIL - N. LOOP ST.

	STATION	OFFSET	ELEVATION
A	2+47.73	9.21' RT	514.68
B	2+27.62	17.85' RT	516.17
C	2+18.74	37.84' RT	517.75
D	2+00.00	75.71' RT	520.72
E	1+75.00	84.67' RT	522.73
F	1+50.00	79.61' RT	524.00
G	1+23.39	29.35' RT	524.18
H	1+40.00	1.45' LT	523.03
I	1+75.00	13.24' LT	520.24
J	2+26.87	10.17' RT	516.09
K	2+02.44	23.24' RT	518.00
L	1+64.70	36.56' RT	521.00
M	1+39.54	45.43' RT	523.00

