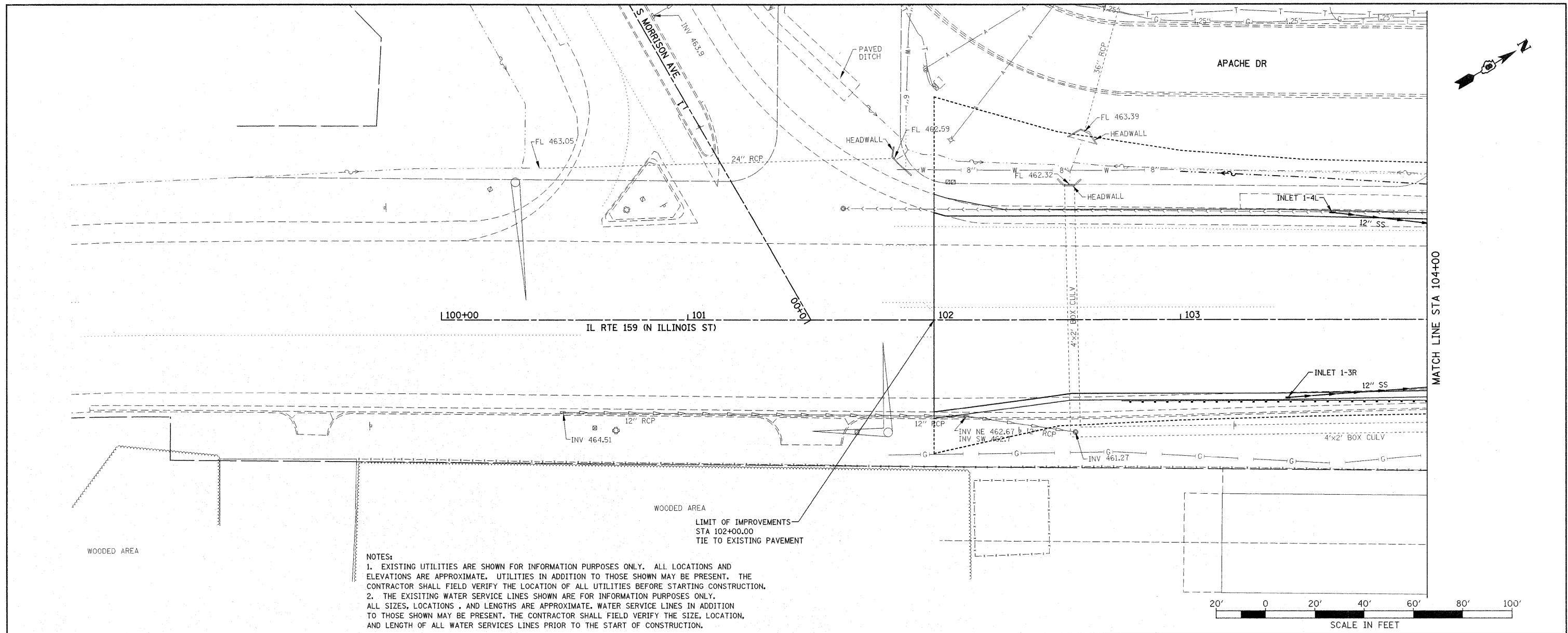
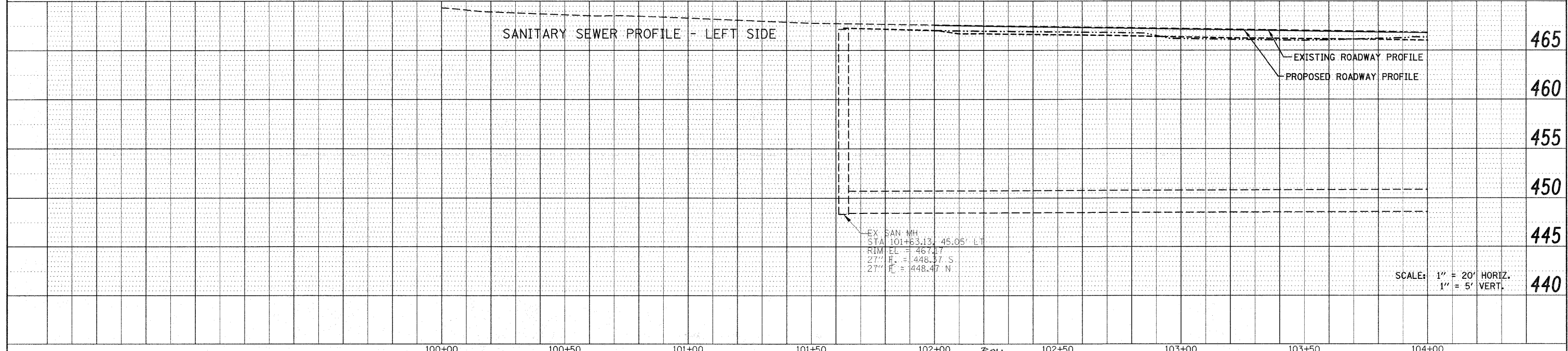
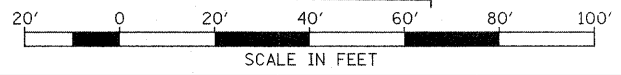


PLAN	SURVEYED	DATE
	PLOTTED	
	NOTED	
	CHECKED	
	BY	
	NO.	
	FILE NAME	

PROFILE	SURVEYED	DATE
	PLOTTED	
	NOTED	
	CHECKED	
	BY	
	NO.	
	FILE NAME	



NOTES:
 1. EXISTING UTILITIES ARE SHOWN FOR INFORMATION PURPOSES ONLY. ALL LOCATIONS AND ELEVATIONS ARE APPROXIMATE. UTILITIES IN ADDITION TO THOSE SHOWN MAY BE PRESENT. THE CONTRACTOR SHALL FIELD VERIFY THE LOCATION OF ALL UTILITIES BEFORE STARTING CONSTRUCTION.
 2. THE EXISTING WATER SERVICE LINES SHOWN ARE FOR INFORMATION PURPOSES ONLY. ALL SIZES, LOCATIONS, AND LENGTHS ARE APPROXIMATE. WATER SERVICE LINES IN ADDITION TO THOSE SHOWN MAY BE PRESENT. THE CONTRACTOR SHALL FIELD VERIFY THE SIZE, LOCATION, AND LENGTH OF ALL WATER SERVICES LINES PRIOR TO THE START OF CONSTRUCTION.



FILE NAME =	USER NAME = default	DESIGNED -	REVISED -	STATE OF ILLINOIS DEPARTMENT OF TRANSPORTATION	DRAINAGE AND UTILITY PLAN/PROFILE IL ROUTE 159	F.A.P. RTE. = 600	SECTION = 60-(30,31,128)-1	COUNTY = MADISON/ST. CLAIR	TOTAL SHEETS = 399	SHEET NO. = 90
PLOT SCALE = 20.0000' / IN.	CHECKED -	REVISED -	SCALE: 1" = 20'			SHEET NO. 2 OF 33 SHEETS	STA 100+00.00 TO STA 104+00.00	CONTRACT NO. 76830		
PLOT DATE = 12/17/2009	DATE -	REVISED -	FED. ROAD DIST. NO.			ILLINOIS FED. AID PROJECT				