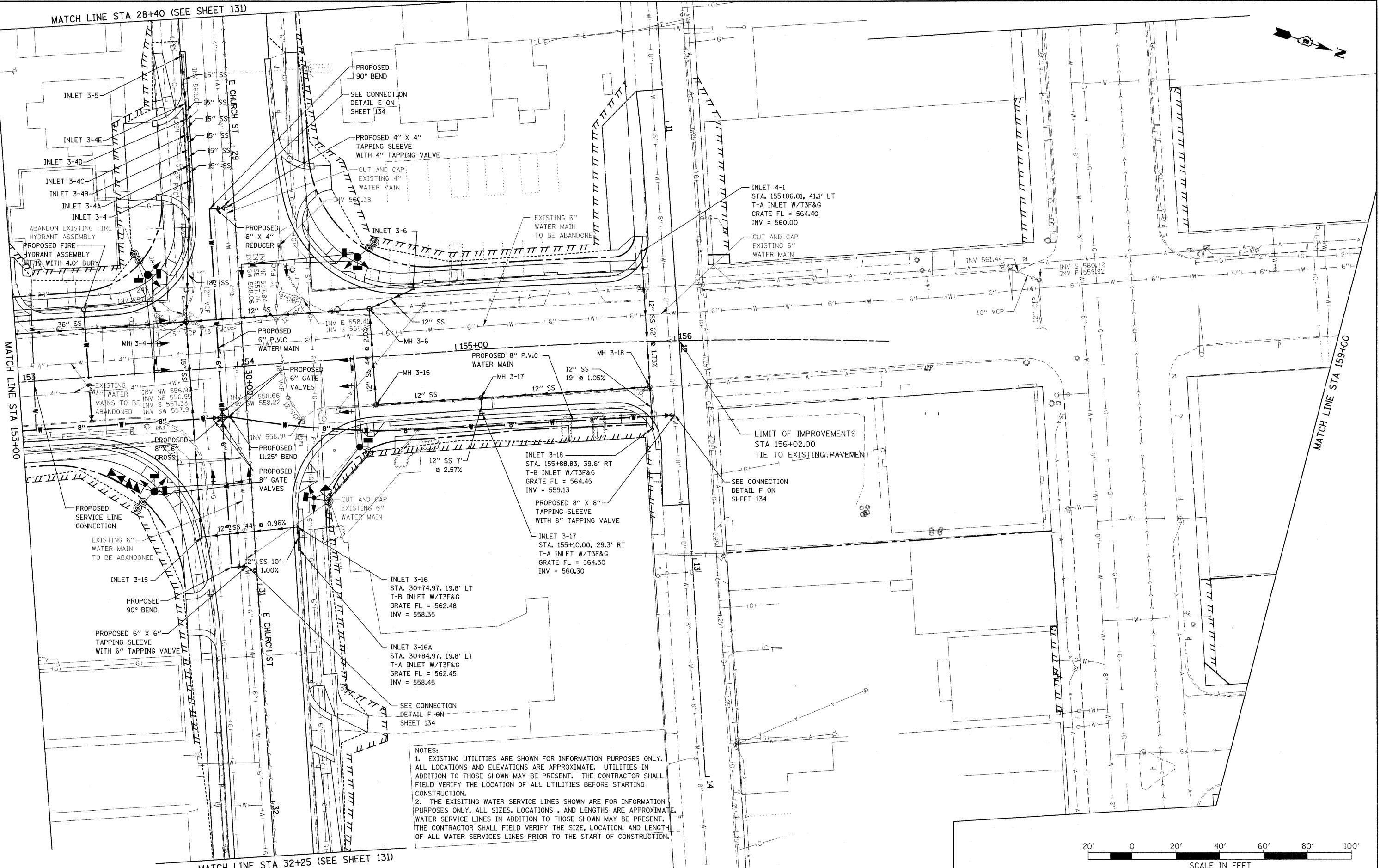
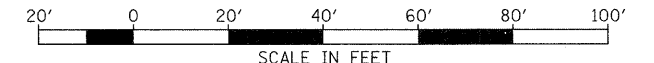


MATCH LINE STA 28+40 (SEE SHEET 131)



NOTES:

- EXISTING UTILITIES ARE SHOWN FOR INFORMATION PURPOSES ONLY. ALL LOCATIONS AND ELEVATIONS ARE APPROXIMATE. UTILITIES IN ADDITION TO THOSE SHOWN MAY BE PRESENT. THE CONTRACTOR SHALL FIELD VERIFY THE LOCATION OF ALL UTILITIES BEFORE STARTING CONSTRUCTION.
- THE EXISTING WATER SERVICE LINES SHOWN ARE FOR INFORMATION PURPOSES ONLY. ALL SIZES, LOCATIONS, AND LENGTHS ARE APPROXIMATE. WATER SERVICE LINES IN ADDITION TO THOSE SHOWN MAY BE PRESENT. THE CONTRACTOR SHALL FIELD VERIFY THE SIZE, LOCATION, AND LENGTH OF ALL WATER SERVICES LINES PRIOR TO THE START OF CONSTRUCTION.



FILE NAME =
 P:\Projects\51350\1\CADD\DWG\876830-sht

USER NAME = default
 DRAWN -
 CHECKED -
 DATE -

DESIGNED -
 DRAWN -
 CHECKED -
 DATE -

REVISED -
 REVISED -
 REVISED -
 REVISED -

**STATE OF ILLINOIS
 DEPARTMENT OF TRANSPORTATION**

**DRAINAGE AND UTILITY PLAN
 IL ROUTE 159**

SCALE: 1" = 20' SHEET NO. 31 OF 33 SHEETS STA 153+00.00 TO STA 156+02.00

F.A.P. RTE.	SECTION	COUNTY	TOTAL SHEETS	SHEET NO.
600	60-(30,31,128)-1	MADISON/ST. CLAIR	399	119
CONTRACT NO. 76830				
FED. ROAD DIST. NO.		ILLINOIS FED. AID PROJECT		

MATCH LINE STA 32+25 (SEE SHEET 131)

MATCH LINE STA 159+00

MATCH LINE STA 153+00