

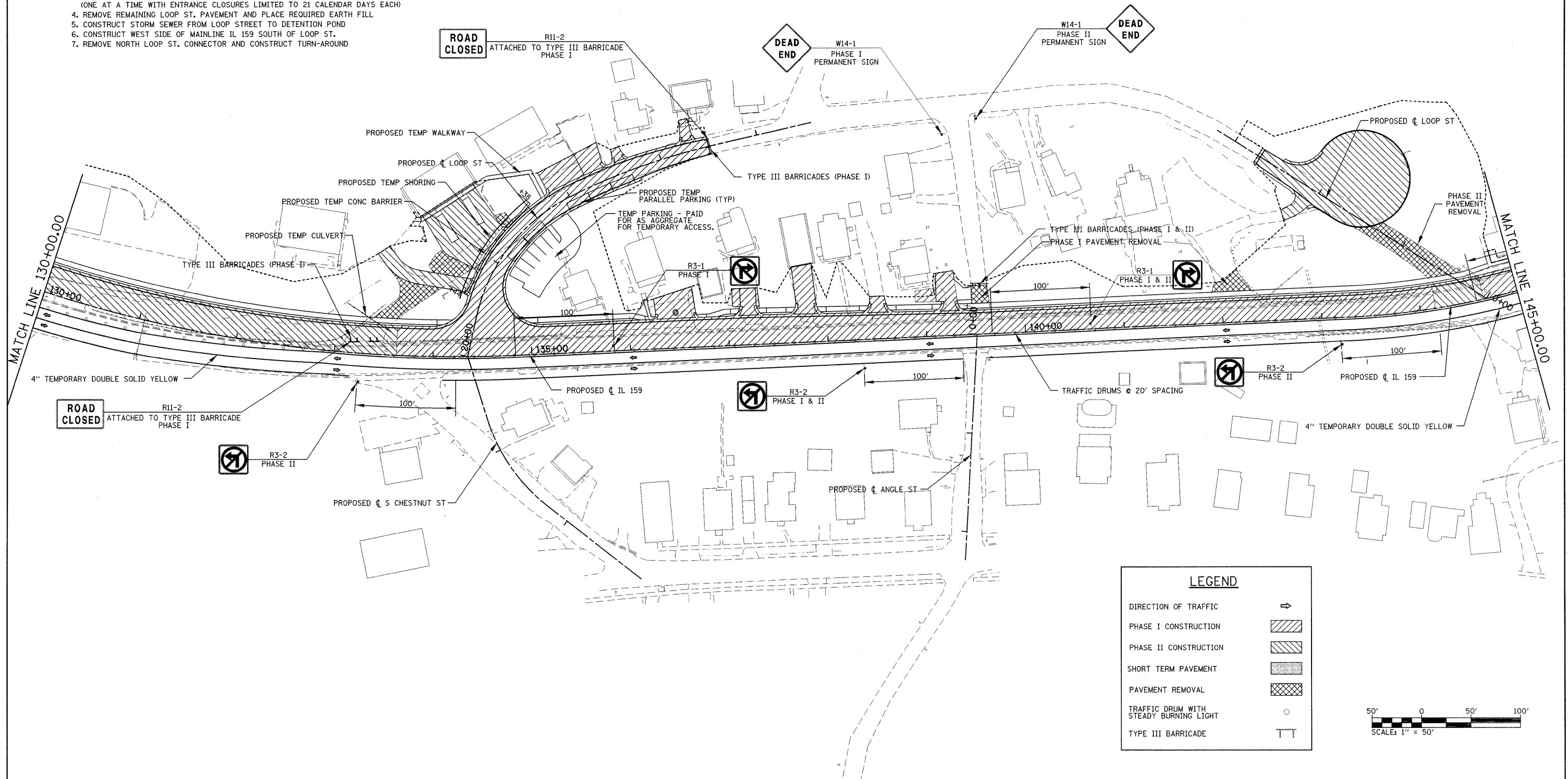
SUGGESTED STAGING AT SOUTH LOOP ST. (LIMITED TO 90 WORKING DAYS)

**PHASE I**

1. KEEP NORTH LOOP ST. OPEN AND SOUTH LOOP ST. OPEN TO FIRST TWO APARTMENTS
2. ACCESS TO ALL APARTMENTS/HOUSES TO BE MAINTAINED OVERNIGHT/COORDINATED IN CONSTRUCTION
3. MOVE UTILITIES (INCLUDING THOSE REQUIRED TO RELOCATE FOR TEMP. SHORING)
4. CONSTRUCT TEMP CULVERT UNDER EXISTING SOUTH LOOP FOR DRAINAGE OF STORM SEWER FROM THE NORTH
5. PLACE SHORING FOR PROPOSED S. LOOP ROADWAY SLOPES ON SOUTH SIDE TO KEEP ACCESS
6. CONSTRUCT STORM SEWER UNDER MAINLINE IL 159 FROM NORTH OF LOOP ST.
7. CONSTRUCT STORM SEWER ON WEST PORTION OF SOUTH LOOP TO WEST OF SECOND APARTMENT BUILDING
8. CONSTRUCT NEW SOUTH LOOP ST. INTERSECTION AND MAINLINE IL 159 PAVEMENT NORTH OF SOUTH LOOP ST.
9. TEMP. SIDEWALK/STAIRS CONSTRUCTED FROM STREET TO APARTMENTS

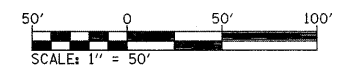
**PHASE II**

1. SIGN LOOP ST. FOR TEMP. ONE-WAY (SB) TRAFFIC TO TEMPORARILY ALLOW PARKING ON EAST SIDE
2. BUILD STORM SEWER TO SOUTH OF FIRST DRIVE
3. PLACE EARTH FILL AND RECONSTRUCT DRIVES AT STA 18+92.3 AND STA 19+28.7 (ONE AT A TIME WITH ENTRANCE CLOSURES LIMITED TO 21 CALENDAR DAYS EACH)
4. REMOVE REMAINING LOOP ST. PAVEMENT AND PLACE REQUIRED EARTH FILL
5. CONSTRUCT STORM SEWER FROM LOOP STREET TO DETENTION POND
6. CONSTRUCT WEST SIDE OF MAINLINE IL 159 SOUTH OF LOOP ST.
7. REMOVE NORTH LOOP ST. CONNECTOR AND CONSTRUCT TURN-AROUND



**LEGEND**

- DIRECTION OF TRAFFIC →
- PHASE I CONSTRUCTION [Hatched Pattern]
- PHASE II CONSTRUCTION [Cross-hatched Pattern]
- SHORT TERM PAVEMENT [Stippled Pattern]
- PAVEMENT REMOVAL [Grid Pattern]
- TRAFFIC DRUM WITH STEADY BURNING LIGHT ○
- TYPE III BARRICADE TT



FILE NAME =	USER NAME = default	DESIGNED -	REVISED -
P:\Projects\51350\1\CADD\DN\0876830-sh	staging2.dgn	DRAWN -	REVISED -
	PLOT SCALE = 50.0000' / IN.	CHECKED -	REVISED -
	PLOT DATE = 4/30/2010	DATE -	REVISED -

STATE OF ILLINOIS  
DEPARTMENT OF TRANSPORTATION

SUGGESTED STAGES OF CONSTRUCTION AND TRAFFIC CONTROL - STAGE 2  
SCALE: 1" = 50' SHEET NO. 4 OF 5 SHEETS STA. 130+00.00 TO STA. 145+00.00

F.A.P. RTE.	SECTION	COUNTY	TOTAL SHEETS	SHEET NO.
600	60-(30,31,128)-1	MAISON/ST. CLAIR	399	157
FED. ROAD DIST. NO. ILLINOIS FED. AID PROJECT			CONTRACT NO. 76830	