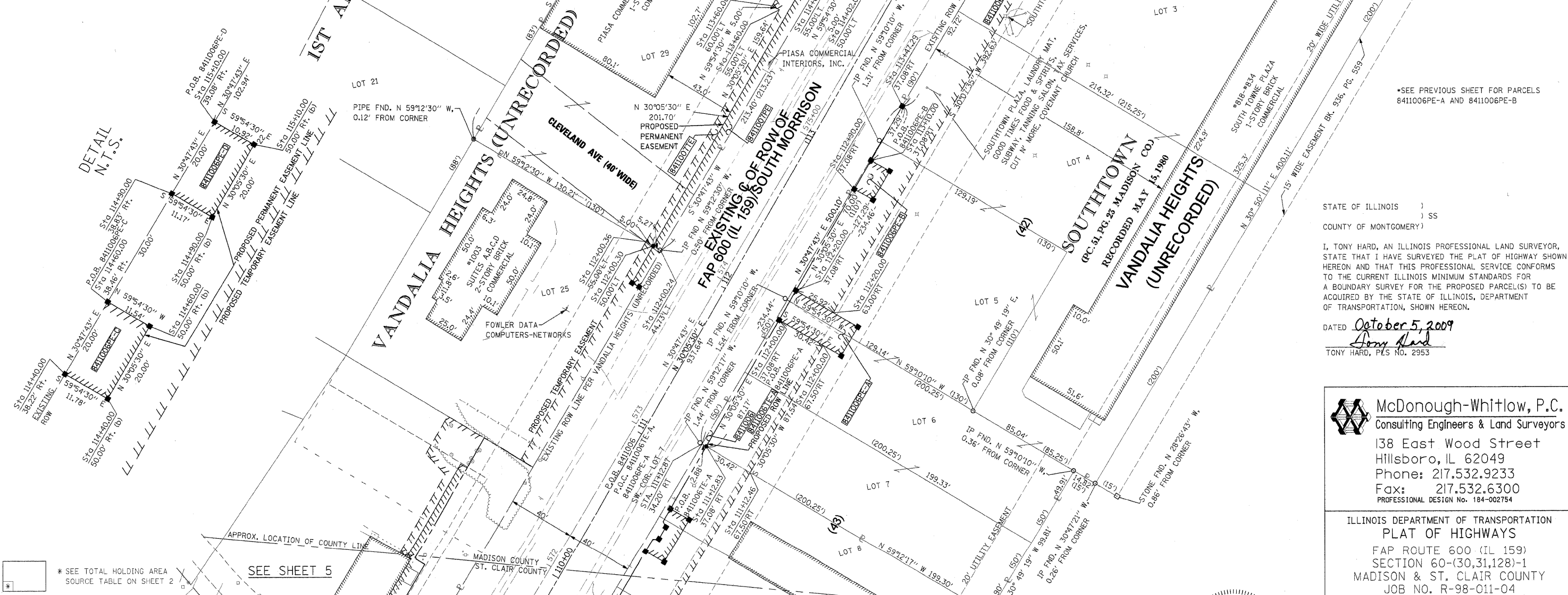


PART OF U.S. SURVEY 393 CLAIM 609 IN T.3N., R.8W., OF THE 3RD PM, MADISON COUNTY, ILLINOIS

SEE BASIS OF COORDINATES AND BEARINGS STATEMENT ON SHEET 2

COORDINATE TABLE				
STATION	OFFSET	NORTH	EAST	
111+12.83	37.08' RT	725,363.2236	348,492.9217	
112+00.00	80.00' RT	725,417.1242	348,573.7619	
112+20.00	80.00' RT	725,434.4287	348,583.7896	
116+13.36	40.10' RT	725,794.2839	348,746.4849	
115+10.00	39.08' RT	725,705.8615	348,693.7845	
115+10.00	50.00' RT	725,700.3855	348,703.2342	
114+90.00	50.00' RT	725,683.0810	348,693.2065	
114+90.00	38.83' RT	725,688.6801	348,683.5443	
114+60.00	38.46' RT	725,662.9081	348,668.1840	
114+60.00	50.00' RT	725,657.1242	348,678.1650	
114+40.00	50.00' RT	725,639.8198	348,668.1373	
114+40.00	38.22' RT	725,645.7268	348,657.9438	
113+47.29	37.08' RT	725,566.0806	348,610.4741	
113+10.00	37.08' RT	725,533.8184	348,591.7787	
113+10.00	50.00' RT	725,527.3405	348,602.9574	
112+90.00	50.00' RT	725,510.0360	348,592.3297	
112+90.00	37.08' RT	725,516.5139	348,581.7510	
112+20.00	37.08' RT	725,455.9481	348,546.6541	
112+00.00	37.08' RT	725,438.6436	348,536.6264	
112+00.30	50.00' LT	725,482.5658	348,461.4343	
114+13.78	55.00' LT	725,669.7779	348,564.1418	
114+02.00	55.00' LT	725,659.5865	348,558.2361	
114+02.00	50.00' LT	725,657.0796	348,562.5622	
106+52.89	PI	724,983.8610	348,230.2313	
115+90.53	PI	725,795.1323	348,700.3499	

SEE SHEET 46 FOR CONTROL POINTS WITH CROSSIES
 (a) - SET DRILL HOLE WITH MAG NAIL
 (b) - SET MAG NAIL OR LANDSCAPE NAIL



SPACE RESERVED FOR RECORDING OFFICER

STATE OF ILLINOIS)
) SS
 COUNTY OF MONTGOMERY)

I, TONY HARD, AN ILLINOIS PROFESSIONAL LAND SURVEYOR, STATE THAT I HAVE SURVEYED THE PLAT OF HIGHWAY SHOWN HEREON AND THAT THIS PROFESSIONAL SERVICE CONFORMS TO THE CURRENT ILLINOIS MINIMUM STANDARDS FOR A BOUNDARY SURVEY FOR THE PROPOSED PARCEL(S) TO BE ACQUIRED BY THE STATE OF ILLINOIS, DEPARTMENT OF TRANSPORTATION, SHOWN HEREON.

DATED October 5, 2009
 Tony Hard
 TONY HARD, P.L.S. NO. 2953

McDonough-Whitlow, P.C.
 Consulting Engineers & Land Surveyors
 138 East Wood Street
 Hillsboro, IL 62049
 Phone: 217.532.9233
 Fax: 217.532.6300
 PROFESSIONAL DESIGN NO. 184-002754

ILLINOIS DEPARTMENT OF TRANSPORTATION
PLAT OF HIGHWAYS
 FAP ROUTE 600 (IL 159)
 SECTION 60-(30,31,128)-1
 MADISON & ST. CLAIR COUNTY
 JOB NO. R-98-011-04
 STATION 111+00 TO STATION 116+25

SCALE: 1" = 30'

ILLINOIS DEPARTMENT OF TRANSPORTATION
 DIVISION OF HIGHWAYS/REGION 5/DISTRICT 8
 1102 EASTPORT PLAZA DRIVE
 COLLINGSVILLE, ILLINOIS 62234-6198

F.A.P. RTE.	SECTION	COUNTY	TOTAL SHEETS	SHEET NO.
600	60-(30,31,128)-1	MADISON & ST. CLAIR	399	187

CONTRACT NO. 76830

PARCEL NO.	OWNER	TOTAL HOLDING ACRES	FEE SIMPLE ACQUISITION				REMAINDER ACRES	EASEMENTS		PERMANENT TAX NUMBER	PROPERTY ACQUIRED BY	
			GROSS ACRES	SO. FT.	NET ACRES	SO. FT.		PE - PERMANENT ACRES	SO. FT.			
8411006	NATIONAL LAUNDRY EQUIPMENT CORPORATION TITLE REPORT NO. MA-3416.0	2.4257	0.0077	338	0.0077	338	2.4180	TE-A 0.0610 TE-B 0.2085 PE-A 0.0197 PE-B 0.0059 PE-C 0.0054 PE-D 0.0051	2,657 9,083 858 258 233 221	TE-A&B GRADING & ENTRANCE CONSTRUCTION PE-A,B,C,D, GRADING, DRAINAGE CONSTRUCTION & MAINTENANCE, ENTRANCE CONSTRUCTION	13-2-21-33-20-401-029 13-2-21-33-20-401-028 13-2-21-34-17-301-012 13-2-21-34-17-301-011	
8411007	PIAZA COMMERCIAL INTERIORS, INC., AN ILLINOIS CORPORATION TITLE REPORT NO. MA-3420.0	0.6375	0	0	0	0	0.6375	TE 0.0286 PE 0.0336	1,248 1,463	TE-GRADING & ENTRANCE CONSTRUCTION PE-GRADING, DRAINAGE CONSTRUCTION & MAINTENANCE	13-1-21-33-20-401-007	