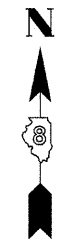


PART OF U.S. SURVEY 393, CLAIM 609 AND PART OF THE SW 14 OF SECTION 34, T3N, R8W, OF THE 3RD PM, MADISON COUNTY, ILLINOIS

SEE SHEET 13

CURVE TABLE									
CURVE	PI STA.	Δ	TANGENT	LENGTH	RADIUS	CHORD	CHORD BEARING	PC STA.	PT STA.
8411024A			28.96' (25.28')	1,045.20'	28.96'	28.96'	S 30°00'05" W		
8411024PR			24.17'	25.00'	23.24'	23.24'	S 03°05'57" W		
8411024TE-B			65.16'	1,045.20'	65.15'	65.15'	N 12°34'49" E		
8411024TE-B1			270.74'	1,045.20'	269.98'	269.98'	N 21°47'13" E		
SCLREV-1	7+61.16	15°04'25" (RT)	33.74'	67.09'	255.00'	66.89'	S 43°51'03" E	7+27.42	7+94.51
SCLREV-2	8+27.17	14°36'02" (LT)	32.67'	64.98'	255.00'	64.81'	S 43°36'52" E	7+94.51	8+59.49
SCLREV-3	10+87.24	21°59'37" (RT)	49.55'	97.88'	255.00'	97.28'	S 39°55'05" E	10+37.69	11+35.57
159ULT-3	130+35.23	39°46'51" (LT)	488.44'	937.31'	1,350.00'	918.60'	N 10°48'37" E	125+46.79	134+84.11
C2	592+27.61	39°51'56" (LT) (39°52')	364.53'	699.40' (699.4')	1,005.20' (1,005.2')	685.38'	N 10°51'45" E	588+63.08 (588+63.1)	595+62.48

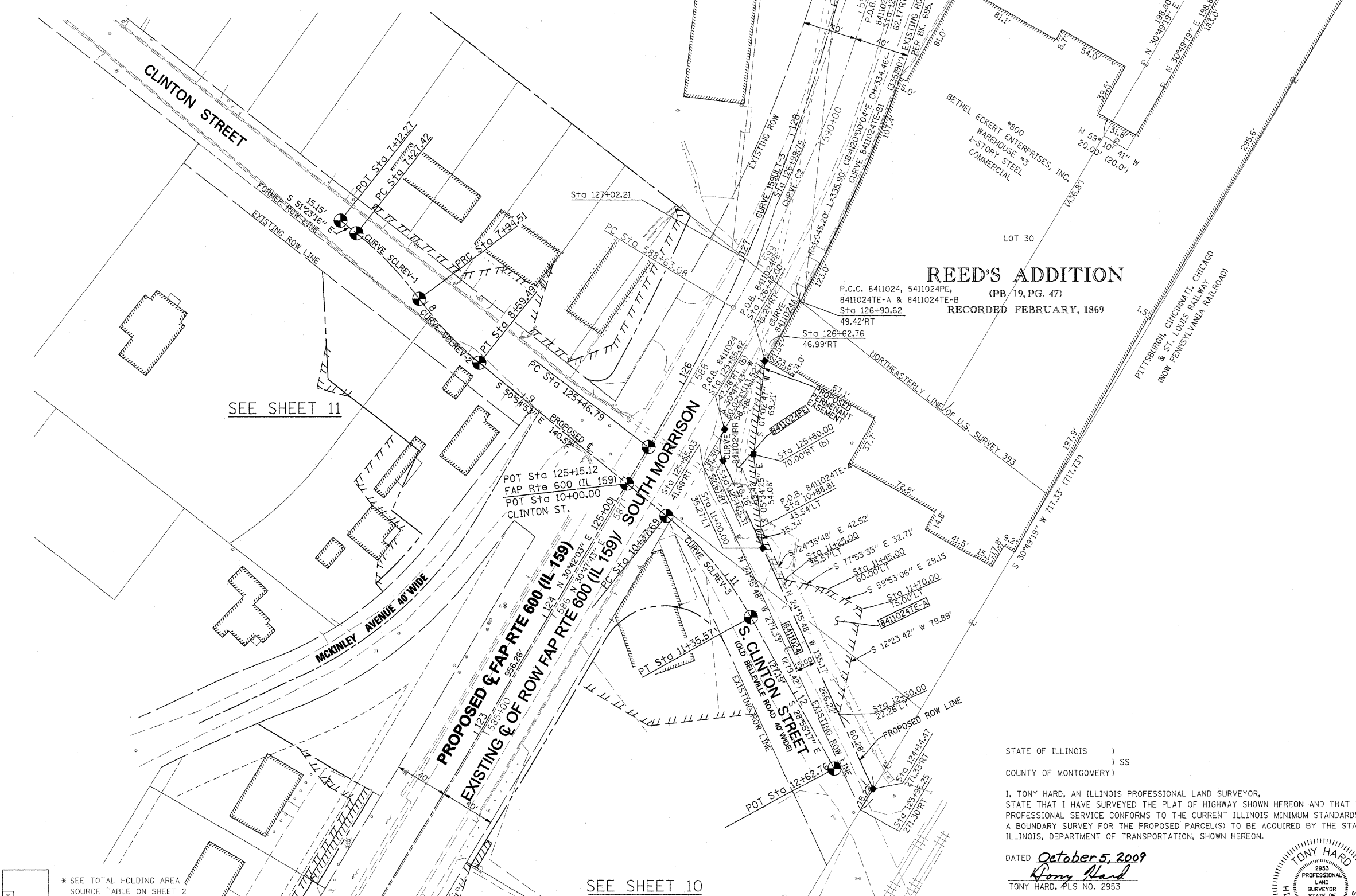


SPACE RESERVED FOR RECORDING OFFICER

SEE BASIS OF COORDINATES AND BEARINGS STATEMENT ON SHEET 2

COORDINATE TABLE			
STATION	OFFSET	NORTH	EAST
123+96.25	271.30' RT	726,349.4177	349,344.9880
125+59.03	41.68' RT	726,603.4000	349,228.7237
124+14.47	271.33' RT	726,365.0634	349,354.3229
125+85.42	42.28' RT	726,630.3278	349,244.7728
125+65.31	52.61' RT	726,607.1228	349,243.5164
115+90.53	PI	725,795.1323	348,700.3499
125+46.79	PC	726,617.3704	349,188.5743
11+00.00	35.27' LT	726,542.7865	349,272.9673
126+42.00	45.27' RT	726,680.5652	349,274.7147
10+37.69	PC	726,566.3769	349,201.6566
11+35.57	PT	726,491.7634	349,264.0831
12+62.76	POT	726,380.4380	349,325.5920
10+00.00	POT	726,590.1374	349,172.4040
125+80.00	70.00' RT	726,611.8804	349,266.2249
127+02.21	⊕	726,755.2715	349,260.0638
130+12.28	62.53' RT	727,038.4283	349,414.6178

SEE SHEET 46 FOR CONTROL POINTS WITH CROSSIES
 (a) - SET DRILL HOLE WITH MAG NAIL
 (b) - SET MAG NAIL OR LANDSCAPE NAIL

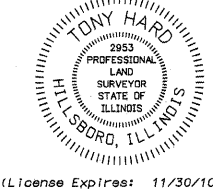


REED'S ADDITION
 P.O.C. 8411024, 5411024PE, 8411024TE-A & 8411024TE-B (PB 19, PG. 47)
 Sta 126+90.62
 49.42' RT
 46.99' RT
 RECORDED FEBRUARY, 1869

STATE OF ILLINOIS)
) SS
 COUNTY OF MONTGOMERY)

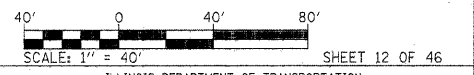
I, TONY HARD, AN ILLINOIS PROFESSIONAL LAND SURVEYOR, STATE THAT I HAVE SURVEYED THE PLAT OF HIGHWAY SHOWN HEREON AND THAT THIS PROFESSIONAL SERVICE CONFORMS TO THE CURRENT ILLINOIS MINIMUM STANDARDS FOR A BOUNDARY SURVEY FOR THE PROPOSED PARCEL(S) TO BE ACQUIRED BY THE STATE OF ILLINOIS, DEPARTMENT OF TRANSPORTATION, SHOWN HEREON.

DATED October 5, 2009
Tony Hard
 TONY HARD, PLS NO. 2953



McDonough-Whitlow, P.C.
 Consulting Engineers & Land Surveyors
 138 East Wood Street
 Hillsboro, IL 62049
 Phone: 217.532.9233
 Fax: 217.532.6300
 PROFESSIONAL DESIGN NO. 184-002754

ILLINOIS DEPARTMENT OF TRANSPORTATION
PLAT OF HIGHWAYS
 FAP ROUTE 600 (IL 159)
 SECTION 60-(30,31,128)-1
 MADISON COUNTY
 JOB NO. R-98-011-04
 STATION 123+75 TO STATION 130+25



F.A.P. RTE.	SECTION	COUNTY	TOTAL SHEETS	SHEET NO.
600	60-(30,31,128)-1	MADISON	399	123

COMPLETION DATE OF FIELD WORK PERFORMED
 LAND SURVEY: 10-11-05 ROW STAKING: 09-17-09
 CONTRACT NO. 76830
 FED. ROAD DIST. NO. ILLINOIS FED. AID PROJECT

PARCEL NO.	OWNER	TOTAL HOLDING ACRES	GROSS		NET		REMAINDER ACRES	EASEMENTS		PERMANENT TAX NUMBER	PROPERTY ACQUIRED BY
			ACRES	SQ. FT.	ACRES	SQ. FT.		ACRES	SQ. FT.		
8411024	JAMES ECKERT, AS TO AN UNDIVIDED 1/2 INTEREST; AND LARRY ECKERT, TRUSTEE OF THE DEBORAH ECKERT REVOCABLE TRUST DATED MAY 15, 2001, AS TO AN UNDIVIDED 1/2 INTEREST TITLE REPORT NO. MA-3431.0	3.3800	0.0968	4,216	0.0968	4,216	3.2832	PE 0.0441 TE-A 0.0690 TE-B 0.0098	1,921 3,007 426	13-2-21-34-13-302-001	