

PART OF THE SW 14 OF SECTION 34, T3N, R8W, OF THE 3RD PM, MADISON COUNTY, ILLINOIS

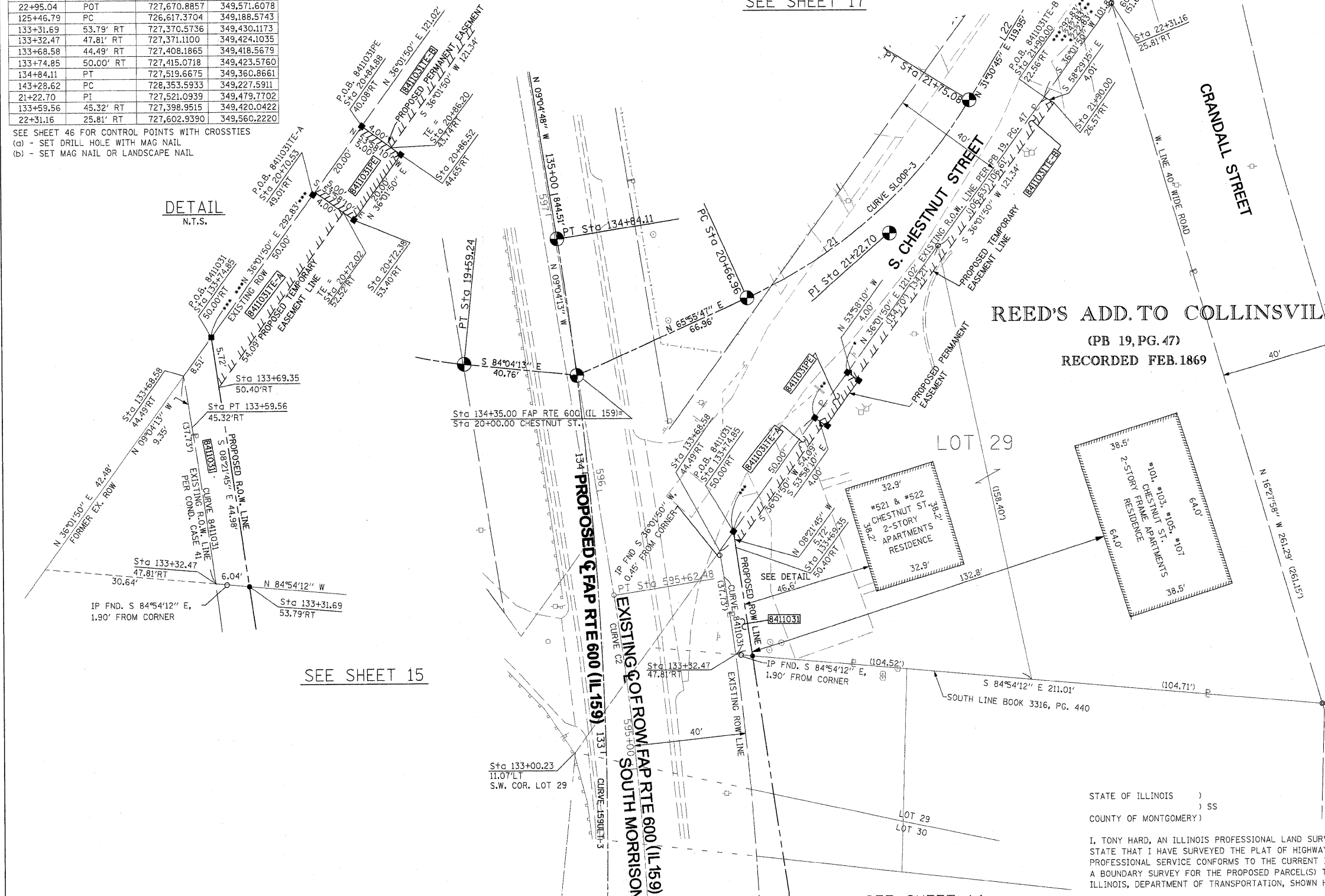
SEE BASIS OF COORDINATES AND BEARINGS STATEMENT ON SHEET 2

COORDINATE TABLE			
STATION	OFFSET	NORTH	EAST
20+00.00	PI	727,471.0464	349,367.7322
20+66.96	PC	727,498.3563	349,428.8690
20+70.53	49.01' RT	727,455.5071	349,452.9868
20+72.38	53.40' RT	727,452.5660	349,457.0303
20+84.88	40.08' RT	727,471.6812	349,464.7511
20+86.52	44.65' RT	727,468.7401	349,468.7946
21+75.08	PT	727,568.6211	349,508.9092
22+95.04	POT	727,670.8857	349,571.6078
125+46.79	PC	726,617.3704	349,188.5743
133+31.69	53.79' RT	727,370.5736	349,430.1173
133+32.47	47.81' RT	727,371.1100	349,424.1035
133+68.58	44.49' RT	727,408.1865	349,418.5679
133+74.85	50.00' RT	727,415.0718	349,423.5760
134+84.11	PT	727,519.6675	349,360.8661
143+28.62	PC	728,353.5933	349,227.5911
21+22.70	PI	727,521.0939	349,479.7702
133+59.56	45.32' RT	727,398.9515	349,420.0422
22+31.16	25.81' RT	727,602.9390	349,560.2220

CURVE TABLE									
CURVE	PI STA.	Δ	TANGENT	LENGTH	RADIUS	CHORD	CHORD BEARING	PC STA.	PT STA.
8411031			28.14'	108.12'	1,045.20'	28.14'	N 08°17'57" W		
SL00P-3	21+22.70	34°25'02" (LT)	55.75'	108.12'	180.00'	106.51'	N 48°43'16" E	20+66.96	21+75.08
159ULT-3	130+35.23	39°46'51" (LT)	488.44'	937.31'	1,350.00'	918.60'	N 10°48'37" E	125+46.79	134+84.11
C2	592+27.61	39°51'56" (LT)	364.53'	699.40'	1,005.20'	685.38'	N 10°51'45" E	588+63.08	595+62.48

SEE SHEET 46 FOR CONTROL POINTS WITH CROSSIES
 (a) - SET DRILL HOLE WITH MAG NAIL
 (b) - SET MAG NAIL OR LANDSCAPE NAIL

DETAIL
N.T.S.



* SEE TOTAL HOLDING AREA SOURCE TABLE ON SHEET 2

PARCEL NO.	OWNER	TOTAL HOLDING ACRES	FEE SIMPLE ACQUISITION			REMAINDER ACRES	EASEMENTS		PERMANENT TAX NUMBER	PROPERTY ACQUIRED BY	
			GROSS ACRES	PREVIOUSLY DEDICATED AND/OR USED ACRES	NET ACRES		PE - PERMANENT ACRES	TE - TEMPORARY ACRES			
8411031	SRT PROPERTIES, LLC, A LIMITED LIABILITY COMPANY TITLE REPORT NO. MA-3433.0	0.6612	0.0055	240	0.0055	240	0.6557	TE-A 0.0048 TE-B 0.0111 PE 0.0023	208 485 100	TE-A - GRADING & ENTRANCE CONSTRUCTION TE-B - GRADING PE - GRADING, DRAINAGE CONSTRUCTION & MAINTENANCE	13-2-21-34-13-302-003.001 13-2-21-34-13-302-003

STATE OF ILLINOIS)
 COUNTY OF MONTGOMERY) SS

I, TONY HARD, AN ILLINOIS PROFESSIONAL LAND SURVEYOR, STATE THAT I HAVE SURVEYED THE PLAT OF HIGHWAY SHOWN HEREON AND THAT THIS PROFESSIONAL SERVICE CONFORMS TO THE CURRENT ILLINOIS MINIMUM STANDARDS FOR A BOUNDARY SURVEY FOR THE PROPOSED PARCEL(S) TO BE ACQUIRED BY THE STATE OF ILLINOIS, DEPARTMENT OF TRANSPORTATION, SHOWN HEREON.

DATED October 5, 2009
Tony Hard
 TONY HARD, PLS NO. 2953



SPACE RESERVED FOR RECORDING OFFICER

McDonough-Whitlow, P.C.
 Consulting Engineers & Land Surveyors
 138 East Wood Street
 Hillsboro, IL 62049
 Phone: 217.532.9233
 Fax: 217.532.6300
 PROFESSIONAL DESIGN NO. 184-002754

ILLINOIS DEPARTMENT OF TRANSPORTATION
PLAT OF HIGHWAYS
 FAP ROUTE 600 (IL 159)
 SECTION 60-(30,31,128)-1
 MADISON COUNTY
 JOB NO. R-98-011-04
 STATION 133+25 TO STATION 135+50

SCALE: 1" = 20'				SHEET 16 OF 46	
F.A.P. RTE.	SECTION	COUNTY	TOTAL SHEETS	SHEET NO.	
600	60-(30,31,128)-1	MADISON	399	197	
COMPLETION DATE OF FIELD WORK PERFORMED			CONTRACT NO. 76830		
LAND SURVEY: 10-11-05		ROW STAKING: 09-17-09			
FED. ROAD DIST. NO.		ILLINOIS FED. AID PROJECT			