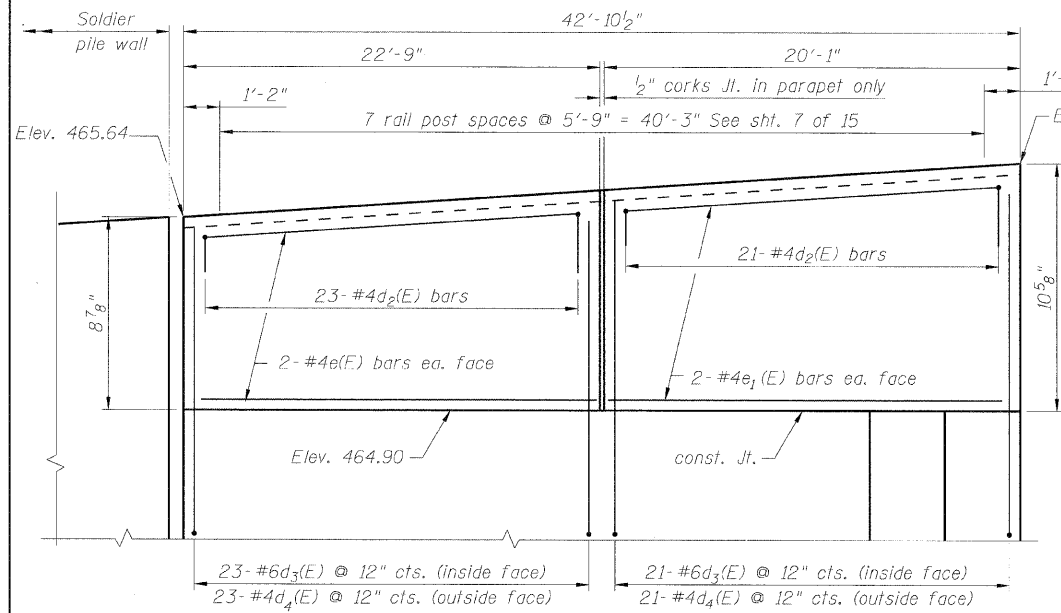
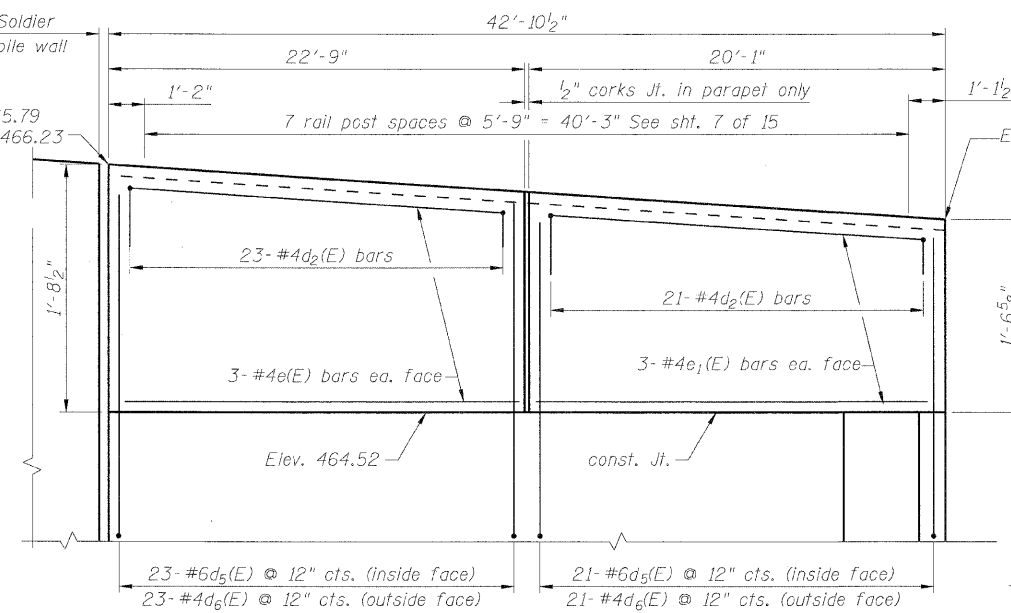


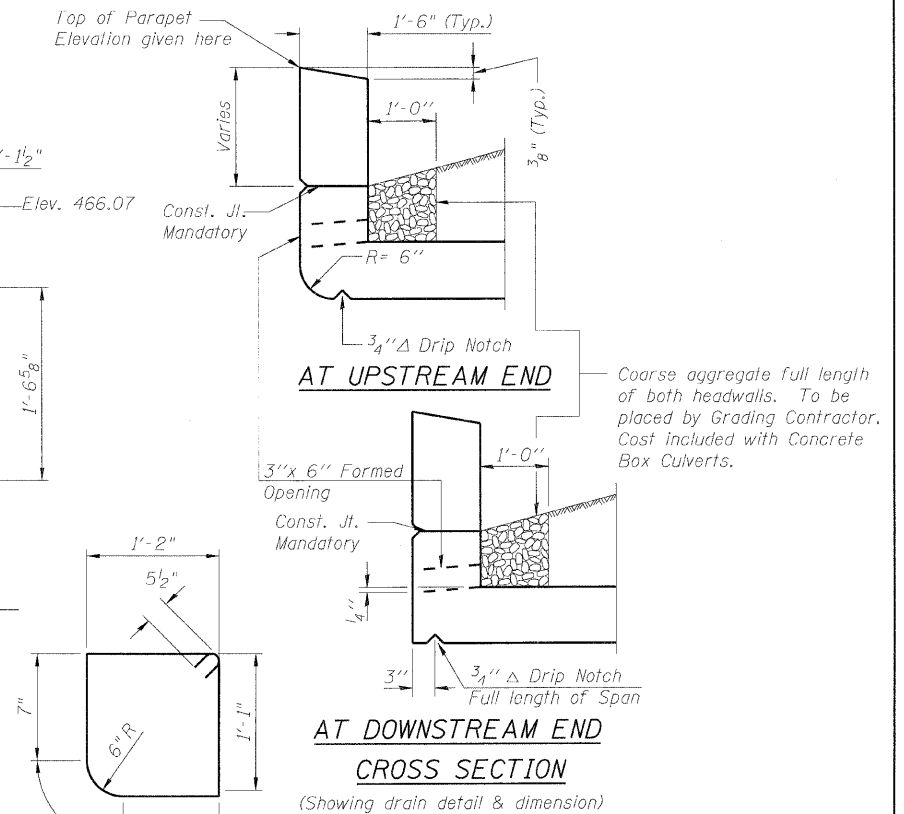
STATE OF ILLINOIS
DEPARTMENT OF TRANSPORTATION



ELEVATION
(U/S HEADWALL & PARAPET)
(Looking D/S)



ELEVATION
(D/S HEADWALL & PARAPET)
(Looking U/S)

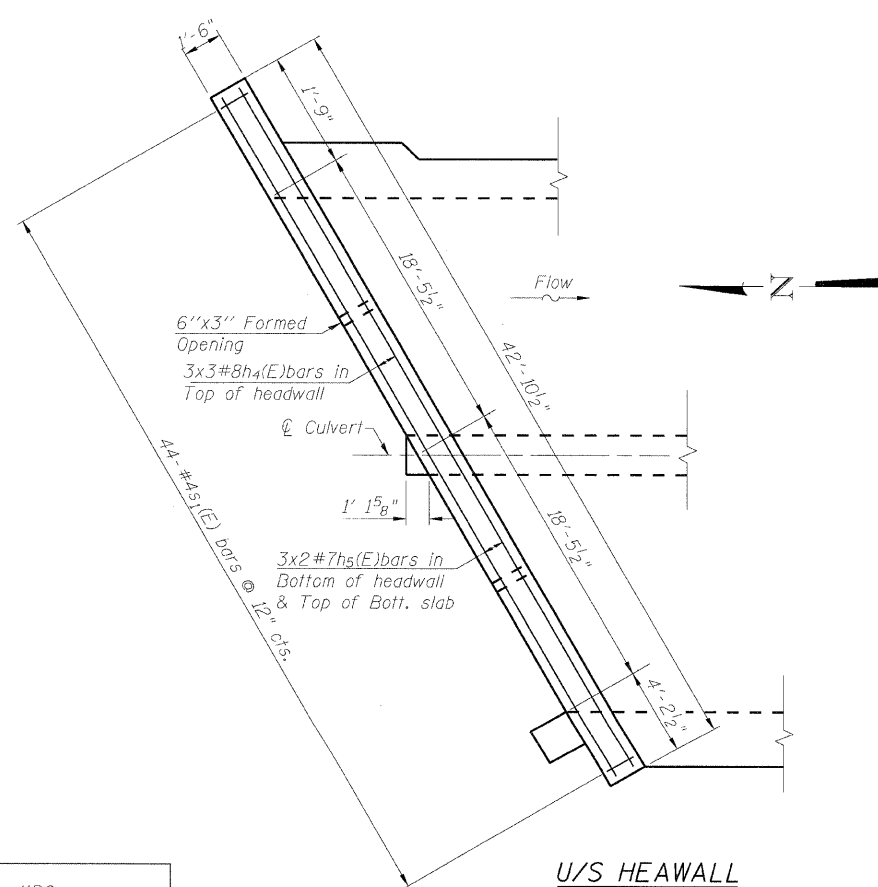


BAR s₁(E)

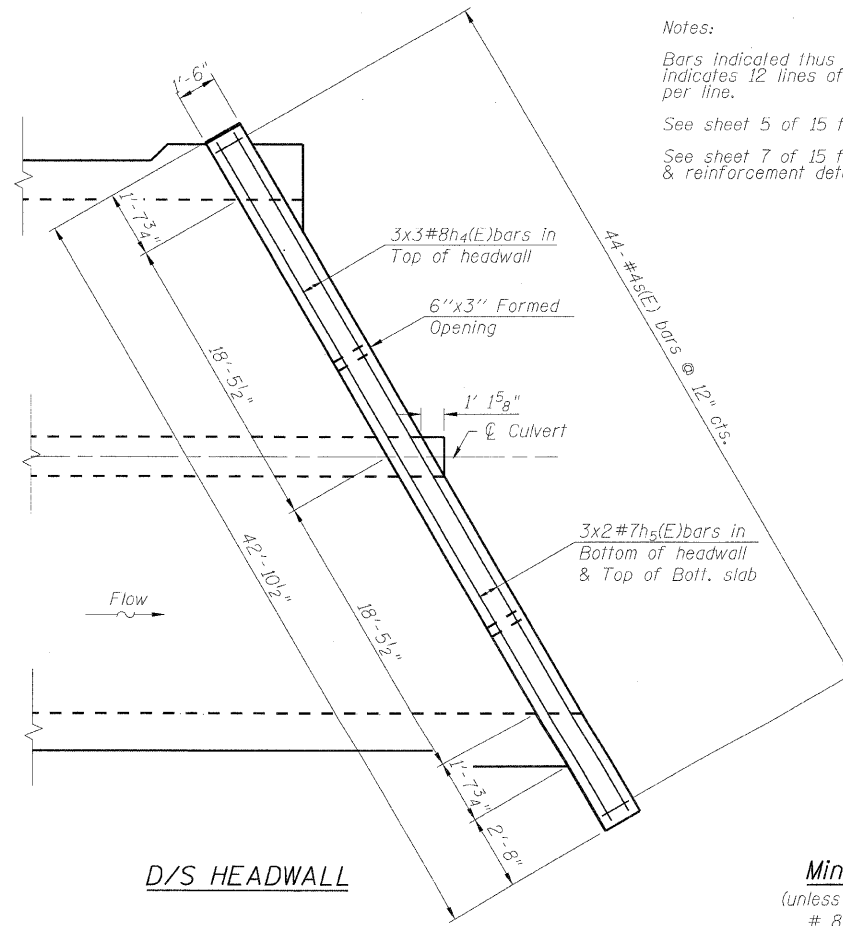
AT UPSTREAM END

AT DOWNSTREAM END

CROSS SECTION
(Showing reinforcement details)



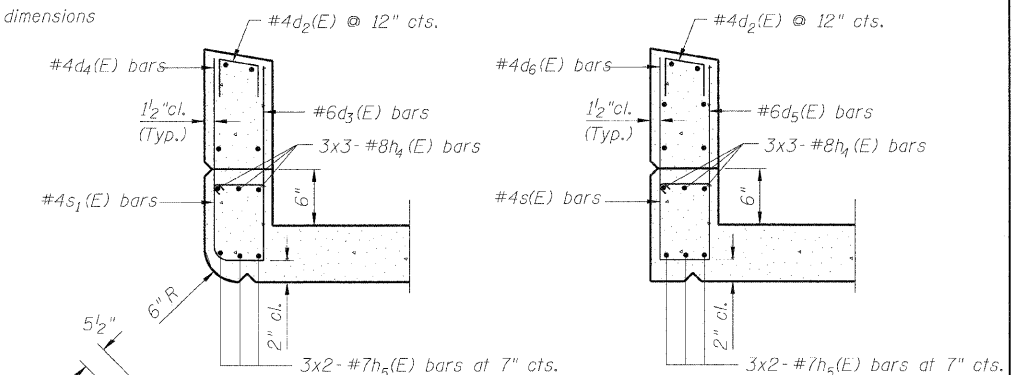
U/S HEADWALL



D/S HEADWALL

PLAN

Notes:
Bars indicated thus 12x4-#5 etc. indicates 12 lines of bars with 4 lengths per line.
See sheet 5 of 15 for Bill of Material.
See sheet 7 of 15 for corner dimensions & reinforcement details.



BAR s(E)

CULVERT HEADWALL & PARAPET
STRUCTURE NO: 082-2044

Min. bar laps
(unless noted otherwise)
8 bar = 3'-8"
7 bar = 2'-9"

DESIGNED - KRG
CHECKED - MJK
DRAWN - OSJ
CHECKED - MJK

SHEET NO. 6	F.A.P. RTE.	SECTION	COUNTY	TOTAL SHEETS	SHEET NO.
	600	60-(30,31,128)-1	St. Clair	399	247
15 SHEETS	STRUCTURE NO: 082-2044		CONTRACT NO. 76830		
FED. ROAD DIST. NO. ILLINOIS FED. AID PROJECT					

MID-AMERICA ENGINEERING SERVICES