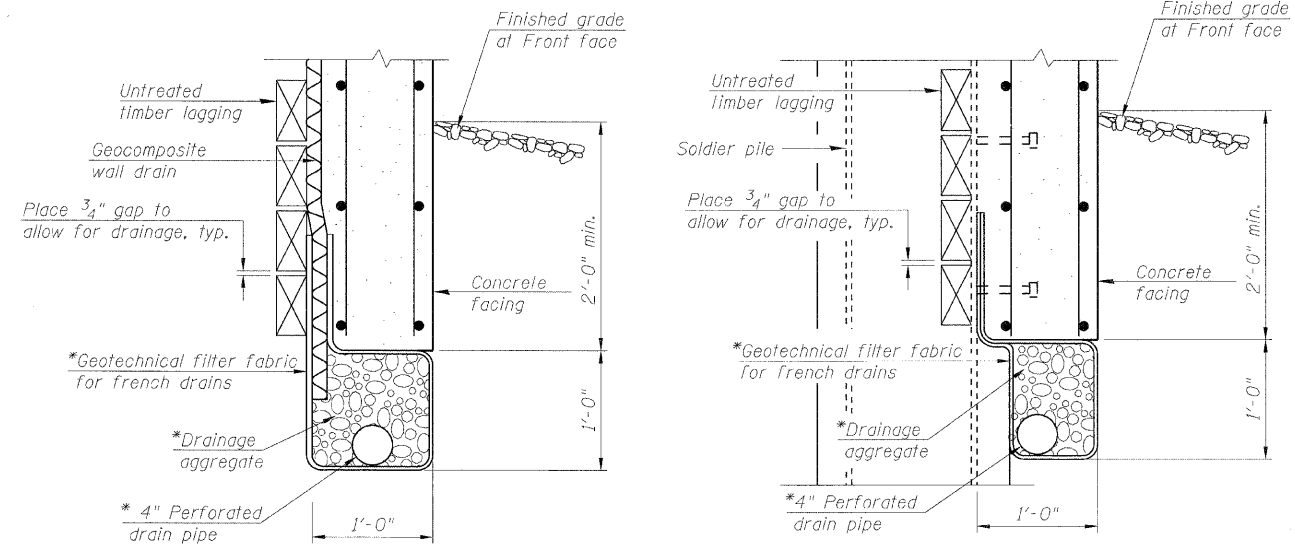


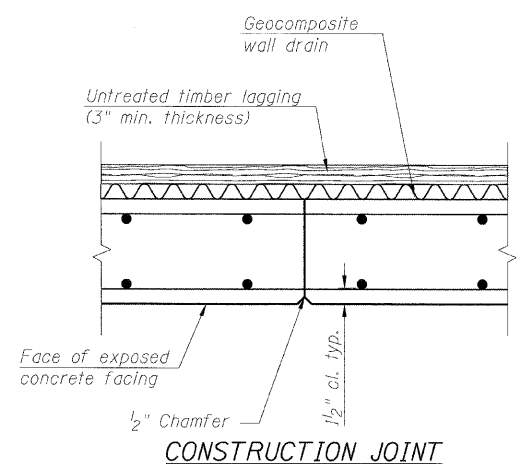
STATE OF ILLINOIS
DEPARTMENT OF TRANSPORTATION



**UNDER DRAIN DETAIL
BETWEEN SOLDIER PILES**

**UNDER DRAIN DETAIL
AT SOLDIER PILES**

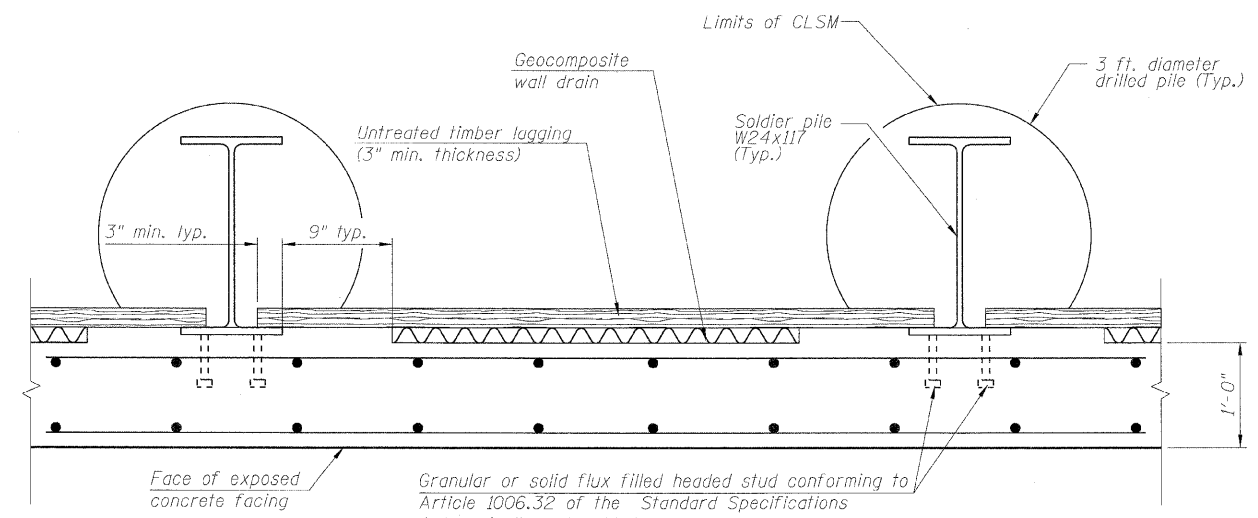
* Included in the cost of Pipe Underdrains for structures.



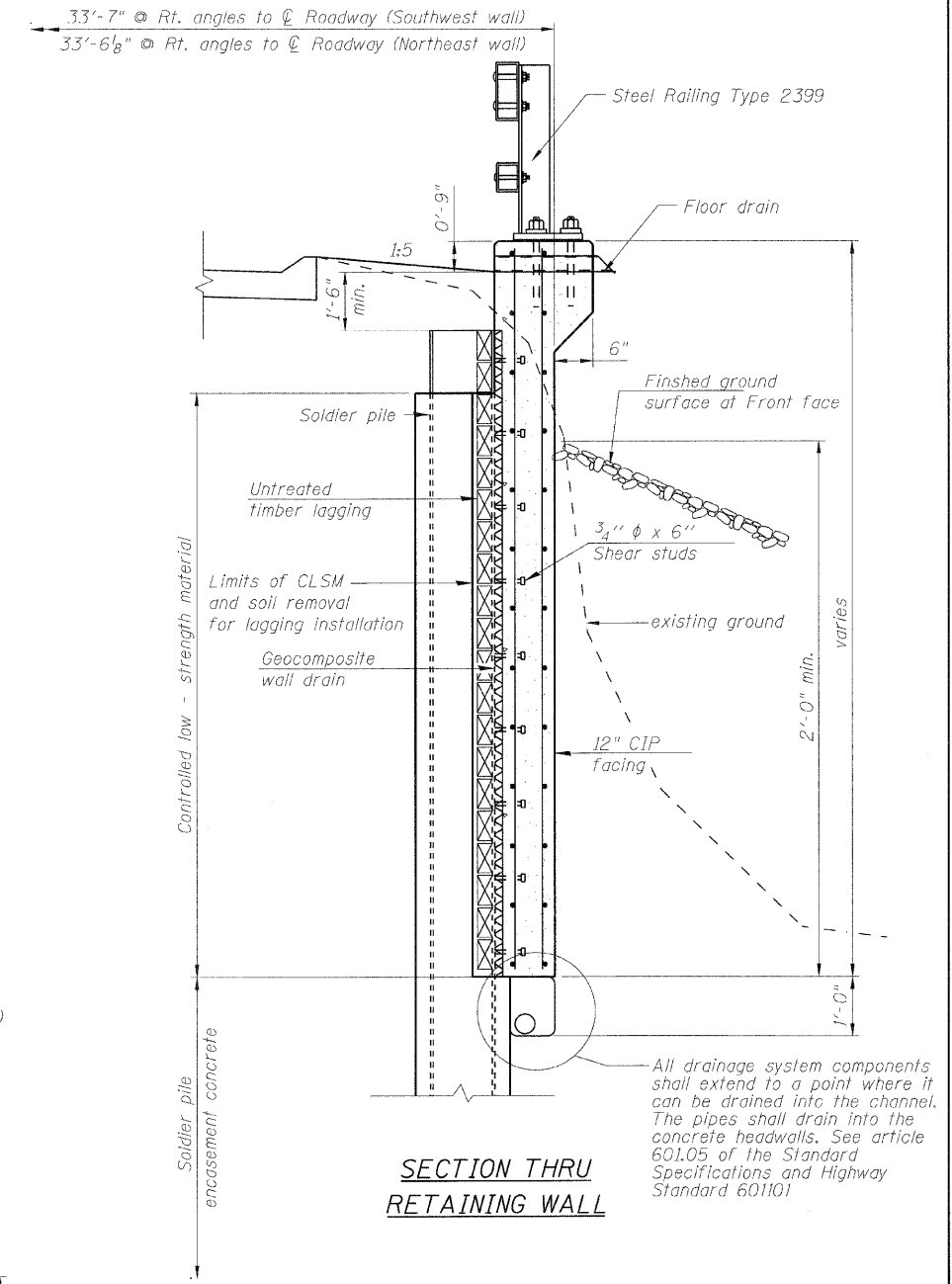
CONSTRUCTION JOINT

Note: The contractor is responsible for the design and performance of the lagging using no less than 3 in. nominal rough-sawn thickness and timber with a minimum allowable bending stress of 1000 psi.

* Included in the cost of Pipe Underdrains for structures.



TYPICAL PLAN THROUGH WALL



**SECTION THRU
RETAINING WALL**

**SOLDIER PILE WALL DETAILS
STRUCTURE NO: 082-2044**

| |
|----------------|
| DESIGNED - KRG |
| CHECKED - MJK |
| DRAWN - GSJ |
| CHECKED - MJK |

| | | | | | |
|-----------------------|------------------------|------------------|--------------------|--------------|-----------|
| SHEET NO. 11 | F.A.P RTE. | SECTION | COUNTY | TOTAL SHEETS | SHEET NO. |
| | 600 | 60-(30,31,128)-1 | St. Clair | 399 | 252 |
| 15 SHEETS | STRUCTURE NO: 082-2044 | | CONTRACT NO. 76830 | | |
| FED. ROAD DIST. NO. - | | ILLINOIS | FED. AID PROJECT | | |