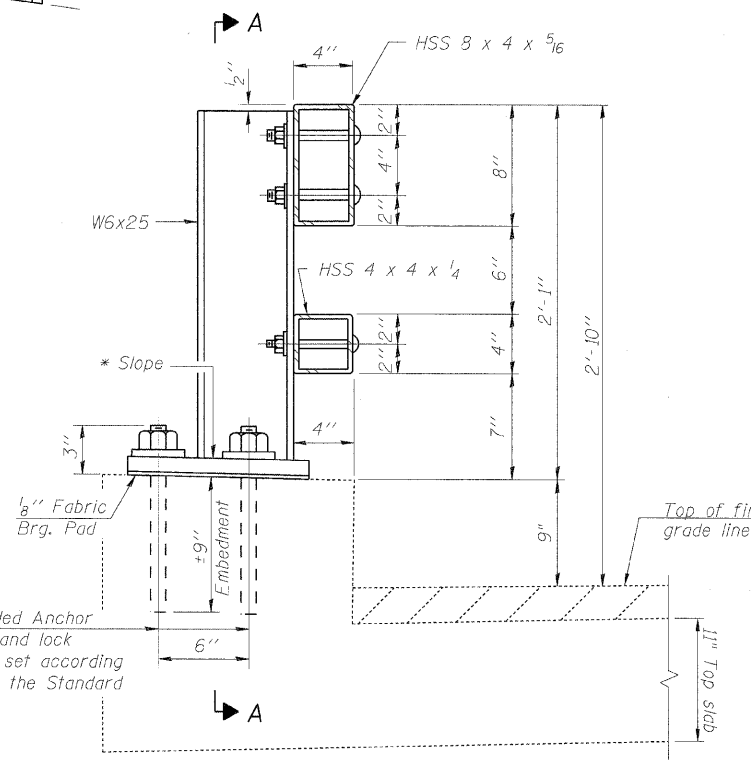
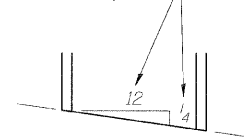
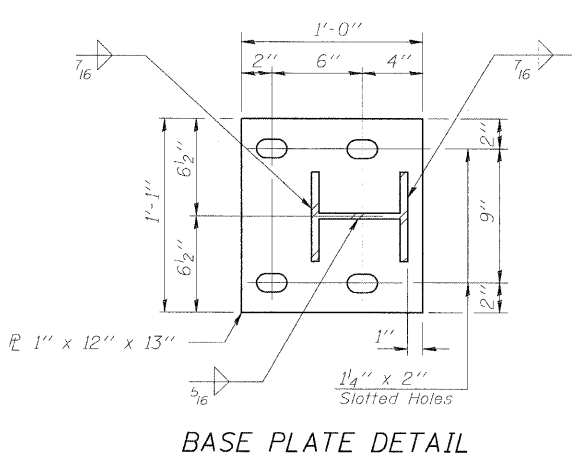


STATE OF ILLINOIS  
DEPARTMENT OF TRANSPORTATION

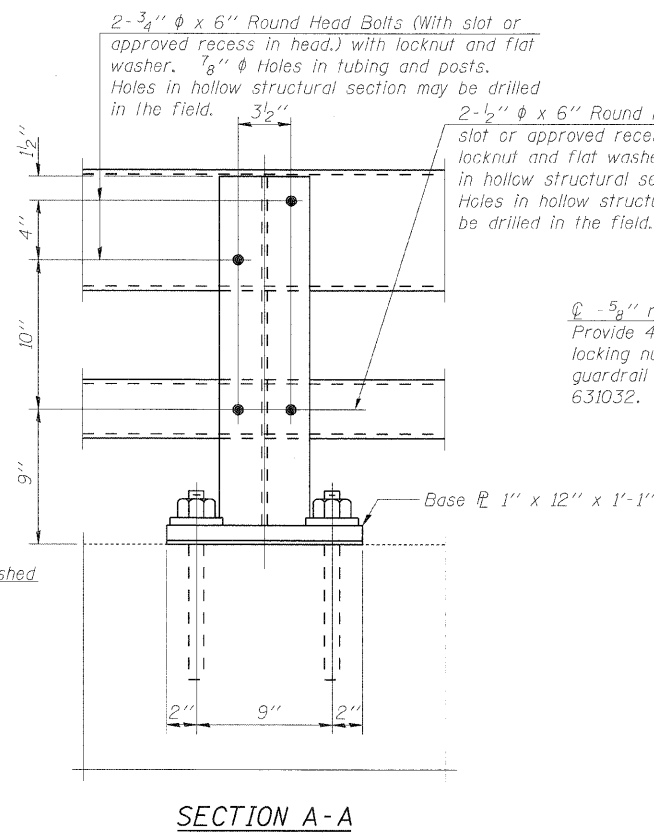
\* Cut bottom end of post to curb slope.



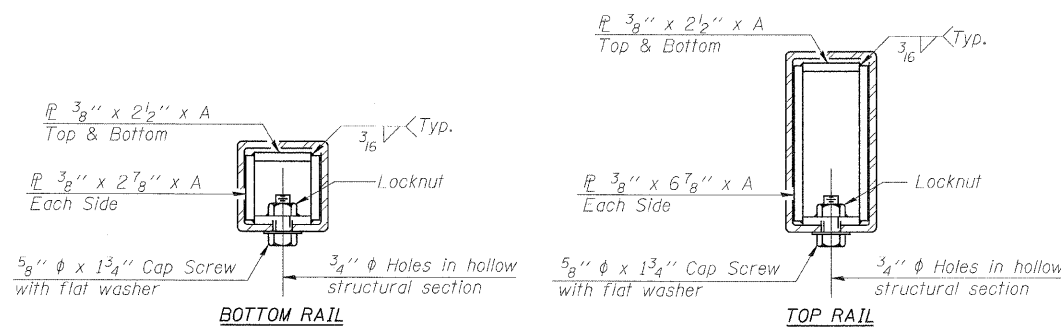
SECTION AT RAIL POST



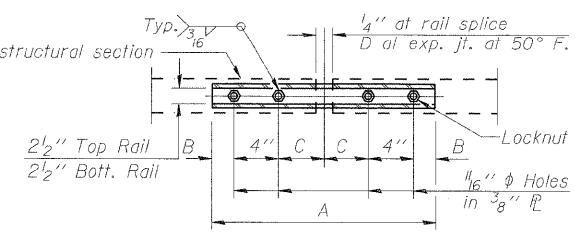
BASE PLATE DETAIL



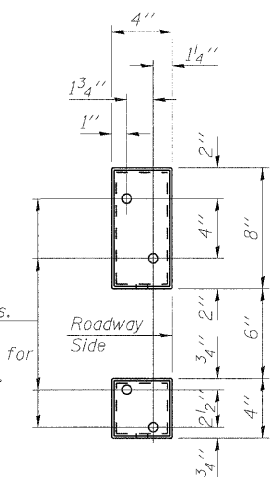
SECTION A-A



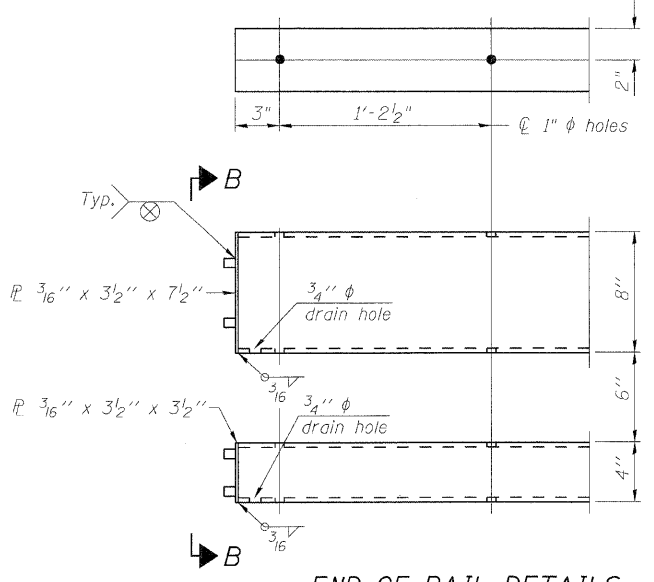
SECTIONS AT RAIL SPLICE



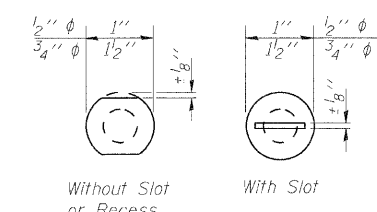
PLAN-BOTT. SPLICE TYPICAL



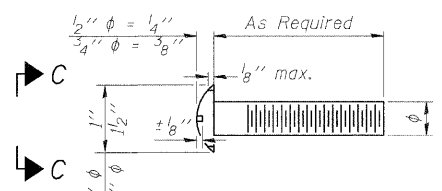
VIEW B-B



END OF RAIL DETAILS



VIEW C-C



DETAIL OF 1/2" & 3/4" ROUND HEAD BOLTS

Notes:  
All field drilled holes shall be coated with an approved zinc rich paint before erection.  
Posts shall not be located closer than 1'-3" to an existing bridge expansion joint or end of bridge.  
Steel Bridge Rail expansion joint shall be provided between any two (2) posts which span a bridge expansion joint. Bolts located at expansion joint shall be provided with locknuts and shall be tightened only to a point that will allow railing movement.  
Provide one 1/8" and two 1/16" steel shims for 25% of the posts. Shims shall be similar to base plates in size and holes.  
All steel rail elements shall be galvanized according to Article 509.05 of the Standard Specifications.

SPLICE DIMENSIONS

T	D	A	B	C	E
≤ 4"	2 1/2"	1'-8"	2"	4"	2 1/2"
> 4" ≤ 6 1/2"	3 3/4"	2'-0"	2 1/2"	5 1/2"	3 1/2"
> 6 1/2" ≤ 9"	5"	2'-4"	3 1/2"	6 1/2"	9"
> 9" ≤ 13"	7"	2'-10"	4 1/2"	8 1/2"	11"
Rail Splice	1/4"	1'-8"	2"	4"	—

T = Total movement at expansion joint as shown on the design plans.

BILL OF MATERIAL

Item	Unit	Quantity
Steel Railing, Type 2399	Foot	171

DESIGNED - KRG
CHECKED - MJK
DRAWN - GSJ
CHECKED - MJK

(6'-3" Maximum Post Spacing)

RAIL SPLICE CONNECTION  
AT EXPANSION JT.  
MID-AMERICA ENGINEERING SERVICES

SHEET NO. 13 15 SHEETS	F.A.P. RTE.	SECTION	COUNTY	TOTAL SHEETS	SHEET NO.
	600	60-(30,31,128)-1	St. Clair	399	254
STRUCTURE NO: 082-2044		CONTRACT NO. 76830			
FED. ROAD DIST. NO. - ILLINOIS		FED. AID PROJECT			

STEEL RAILING, TYPE 2399  
STRUCTURE NO: 082-2044