

COORDINATE TABLES

15TH STREET				
POINT	CURVE	STATION	NORTHING	EASTING
POT		0+00.00	14,039,109.38	2,457,242.23
POT		5+00.00	14,039,459.82	2,457,598.87
POT		15+24.82	14,040,178.10	2,458,329.84

ST. CLAIR AVENUE				
POINT	CURVE	STATION	NORTHING	EASTING
POT		10+00.00	14,038,245.68	2,459,879.01
PC	ST_CLR-1	10+74.84	14,038,252.73	2,459,804.50
PI	ST_CLR-1	11+99.66	14,038,264.48	2,459,680.24
PT	ST_CLR-1	13+22.48	14,038,313.53	2,459,565.46
PC	ST_CLR-2	28+88.26	14,038,928.80	2,458,125.63
PI	ST_CLR-2	29+33.84	14,038,946.71	2,458,083.72
PT	ST_CLR-2	29+78.25	14,038,979.25	2,458,051.81
EQN	41+08.55=BK	41+09.18=AH	14,039,786.13	2,457,260.27
POT		52+37.78	14,040,590.90	2,456,469.02
POT		54+81.87	14,040,764.67	2,456,297.60
PC	ST_CLR-3	59+53.48	14,041,098.44	2,455,964.41
PI	ST_CLR-3	60+16.32	14,041,142.91	2,455,920.02
PT	ST_CLR-3	60+79.14	14,041,185.80	2,455,874.10
PC	ST_CLR-4	61+75.28	14,041,251.43	2,455,803.85
PI	ST_CLR-4	62+50.52	14,041,302.79	2,455,748.86
PT	ST_CLR-4	63+25.75	14,041,356.41	2,455,696.06
EQN	64+00.61=BK	64+00.00=AH	14,041,409.75	2,455,643.54
POT		83+34.12	14,042,787.95	2,454,286.56

BAUGH AVENUE N				
POINT	CURVE	STATION	NORTHING	EASTING
POT		5+00.00	14,039,792.06	2,457,936.98
POT		502+62.62	14,039,980.74	2,457,754.31
PC	BAUGH_N-1	515+13.06	14,040,879.13	2,456,884.54
PI	BAUGH_N-1	516+33.92	14,040,965.96	2,456,800.47
PT	BAUGH_N-1	517+47.80	14,041,084.81	2,456,778.56
PC	BAUGH_N-2	518+37.06	14,041,172.59	2,456,762.37
PI	BAUGH_N-2	518+80.72	14,041,215.53	2,456,754.45
PT	BAUGH_N-2	519+23.02	14,041,251.25	2,456,729.36
POT		520+44.97	14,041,351.05	2,456,659.29

BAUGH AVENUE S15				
POINT	CURVE	STATION	NORTHING	EASTING
POT		110+00.00	14,039,795.80	2,457,940.79
POT		117+37.39	14,039,264.67	2,458,452.30

BAUGH AVENUE S18				
POINT	CURVE	STATION	NORTHING	EASTING
PC	BAUGH_S18-1	11+11.28	14,039,273.11	2,458,461.07
PI	BAUGH_S18-1	12+42.25	14,039,173.63	2,458,546.25
PT	BAUGH_S18-1	13+69.57	14,039,116.16	2,458,663.93
POT		15+00.00	14,039,058.92	2,458,781.13

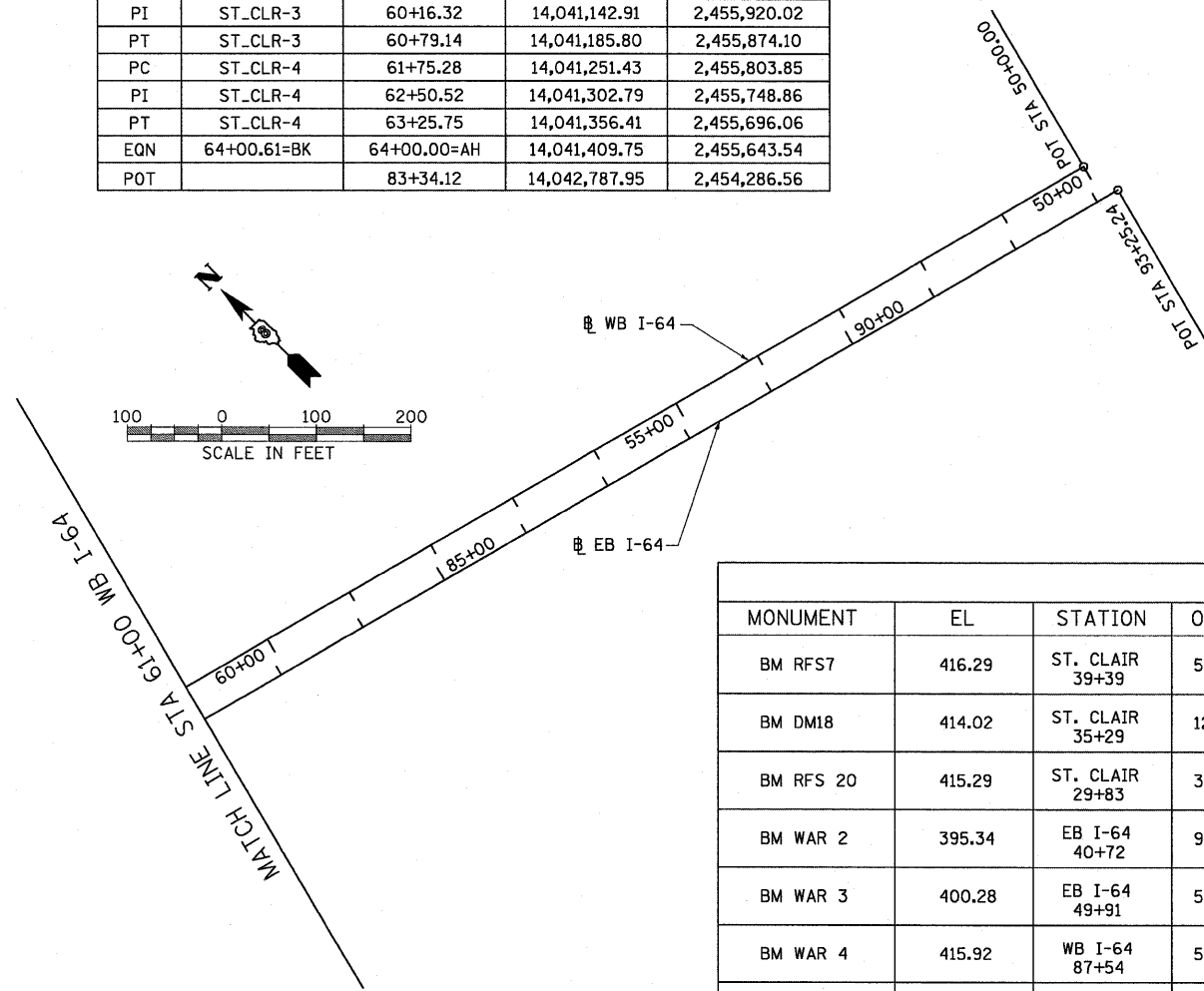
RAMP E				
POINT	CURVE	STATION	NORTHING	EASTING
PC	RAMPE-1	10+00.00	14,039,164.20	2,458,557.32
PI	RAMPE-1	11+49.99	14,039,232.26	2,458,423.66
PT	RAMPE-1	12+98.51	14,039,330.35	2,458,310.20
PC	RAMPE-2	16+48.51	14,039,559.24	2,458,045.43
PI	RAMPE-2	17+13.80	14,039,601.94	2,457,996.03
PT	RAMPE-2	17+79.05	14,039,647.78	2,457,949.53
POT		24+01.28	14,040,084.55	2,457,506.36

EB I-64				
POINT	CURVE	STATION	NORTHING	EASTING
POT		26+70.53	14,041,244.03	2,456,272.79
POT		28+70.41	14,041,098.15	2,456,409.42
PC	64E-1	40+02.75	14,040,287.34	2,457,199.86
PI	64E-1	41+07.48	14,040,212.35	2,457,272.96
PT	64E-1	42+12.19	14,040,136.10	2,457,344.74
PC	64E-2	45+55.36	14,039,886.23	2,457,579.96
PI	64E-2	46+54.23	14,039,814.24	2,457,647.73
PT	64E-2	47+53.10	14,039,743.38	2,457,716.68
PC	64E-3	51+20.71	14,039,479.90	2,457,973.04
PI	64E-3	53+19.44	14,039,411.53	2,458,039.56
PCC	64E-4	55+17.76	14,039,211.15	2,458,265.04
PI	64E-4	58+88.81	14,038,975.31	2,458,551.49
PCC	64E-5	62+57.74	14,038,796.18	2,458,876.44
PI	64E-5	67+01.39	14,038,582.00	2,459,264.96
PT	64E-5	71+40.92	14,038,464.60	2,459,692.80
POT		93+25.24	14,037,886.56	2,461,799.25

WB I-64				
POINT	CURVE	STATION	NORTHING	EASTING
POT		50+00.00	14,038,555.99	2,459,508.71
PC	64W-1	71+33.67	14,038,494.21	2,459,733.83
PI	64W-1	73+67.12	14,038,555.99	2,459,508.71
PCC	64W-2	76+00.02	14,038,643.84	2,459,292.43
PI	64W-2	79+29.11	14,038,767.70	2,458,987.53
PCC	64W-3	82+56.64	14,038,940.99	2,458,707.76
PI	64W-3	83+20.10	14,038,974.40	2,458,653.81
PCC	64W-4	83+83.54	14,039,010.15	2,458,601.37
PI	64W-4	85+63.51	14,039,111.52	2,458,452.67
PCC	64W-5	87+43.28	14,039,224.43	2,458,312.53
PI	64W-5	88+27.34	14,039,277.17	2,458,247.08
PCC	64W-6	89+11.35	14,039,333.81	2,458,184.97
PI	64W-6	90+75.92	14,039,444.70	2,458,063.37
PT	64W-6	92+40.39	14,039,562.54	2,457,948.49
POT		113+49.39	14,041,072.69	2,456,476.31

RAMP A				
POINT	CURVE	STATION	NORTHING	EASTING
POT		6+71.49	14,040,197.44	2,457,222.50
PC	RAMPA_C6-1	7+71.49	14,040,125.83	2,457,292.30
PI	RAMPA_C6-1	9+01.08	14,040,033.04	2,457,382.75
PT	RAMPA_C6-1	10+30.50	14,039,932.72	2,457,464.77
PC	RAMPA_C6-2	16+36.03	14,039,463.95	2,457,848.08
PI	RAMPA_C6-2	18+21.27	14,039,320.55	2,457,965.34
PT	RAMPA_C6-2	19+62.07	14,039,157.99	2,457,876.50

RAMP B				
POINT	CURVE	STATION	NORTHING	EASTING
POT		10+00.00	14,039,100.85	2,457,932.54
PC		10+34.18	14,039,120.56	2,457,960.47
PI	RAMPB-1	12+04.26	14,039,218.65	2,458,099.41
PT	RAMPB-1	13+34.17	14,039,128.06	2,458,243.35
PC	RAMPB-2	16+85.54	14,038,940.91	2,458,540.73
PI	RAMPB-2	17+36.68	14,038,913.67	2,458,584.02
PT	RAMPB-2	17+87.82	14,038,887.21	2,458,627.78
POT		18+96.62	14,038,830.93	2,458,720.89



BENCHMARKS				
MONUMENT	EL	STATION	OFFSET	DESCRIPTION
BM RFS7	416.29	ST. CLAIR 39+39	59.0' LT	CHISELED "X" IN CAP BOLT OF FIRE HYDRANT AT INTERSECTION OF ST. CLAIR AND 14TH STREET
BM DM18	414.02	ST. CLAIR 35+29	12.4' RT	DAVID MASON MONUMENT #18 ALUMINUM DISK IN MEDIAN OF ST. CLAIR AVE. APPROX. 100' SOUTHEAST OF 15TH ST. INTERSECTION
BM RFS 20	415.29	ST. CLAIR 29+83	30.7' LT	CUT "X" ON NORTHERLY CAP BOLT OF FIRE HYDRANT SOUTHWEST QUAD ST. CLAIR AVE. & 16TH STREET
BM WAR 2	395.34	EB I-64 40+72	96' RT	CHISELED "SQUARE" CONCRETE FOUNDATION OF LIGHT POLE I-64 E.B. ALONG 15TH STREET EXIT RAMP
BM WAR 3	400.28	EB I-64 49+91	53.3' RT	CHISELED "SQUARE" CONCRETE FOUNDATION OF LIGHT POLE SOUTH SIDE OF I-64 E.B. 75' EAST OF 15TH STREET BRIDGE
BM WAR 4	415.92	WB I-64 87+54	53.0' RT	CHISELED "SQUARE" CONCRETE FOUNDATION OF LIGHT POLE NORTH SIDE OF I-64 W.B. 500' EAST OF 15TH STREET BRIDGE
BM WAR 5	404.00	WB I-64 93+01	66.74' RT	CHISELED "SQUARE" NORTH CONCRETE FOUNDATION OF SIGN TRUSS OVER I-64 W.B. 75' EAST OF 15TH STREET BRIDGE
BM DAS 2	418.77	18TH 204+43	19.2' RT	CHISELED "X" SOUTHERLY CAP BOLT OF FIRE HYDRANT NORTHEAST QUAD. OF 18TH STREET & BAUGH AVENUE
BM DAS 4	415.74	BAUGH N 5+30	30.1' LT	CHISELED "SQUARE" SOUTHEAST CORNER OF TRAFFIC SIGNAL FOUNDATION N.W. QUAD. OF BAUGH AVE. & 15TH STREET