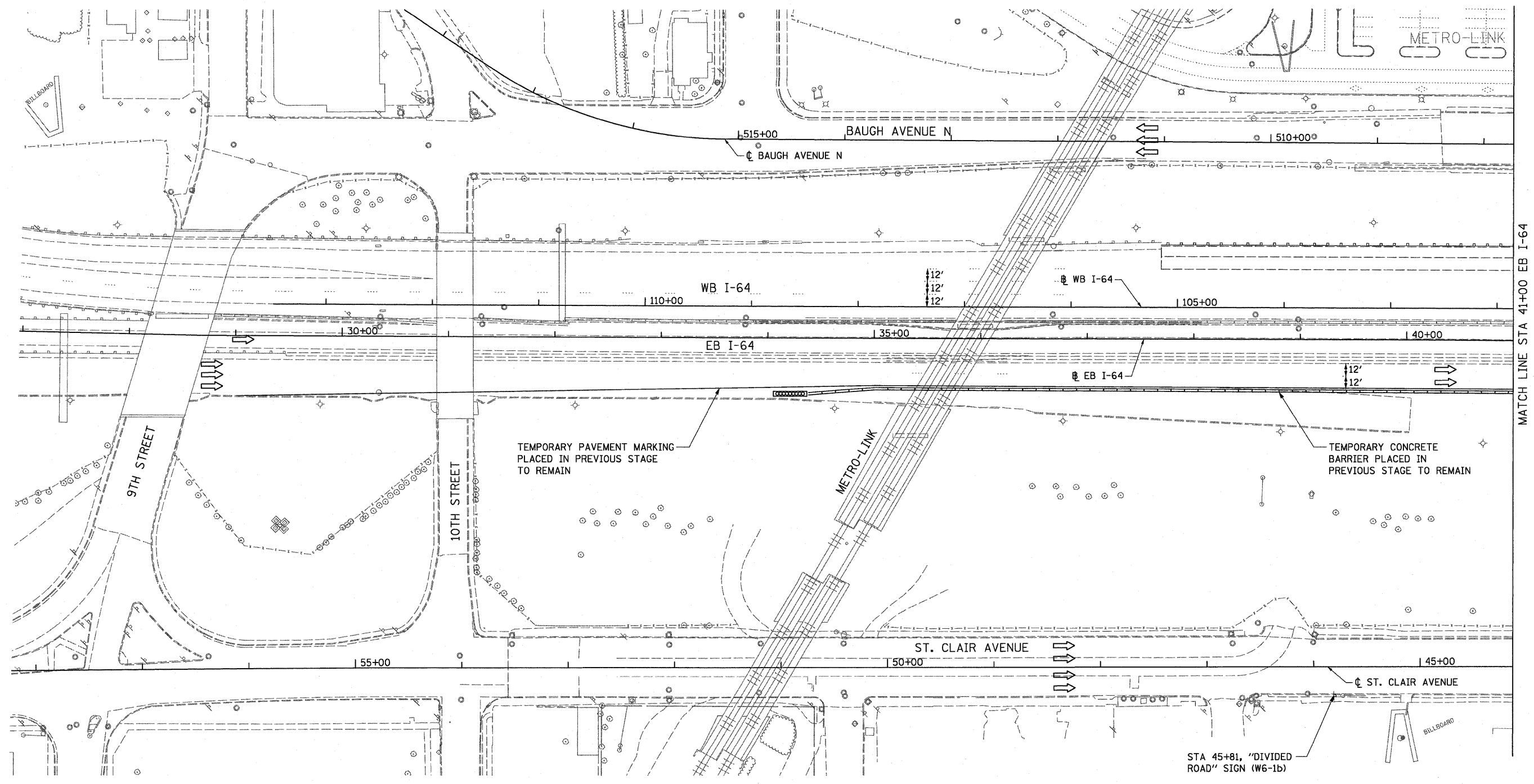
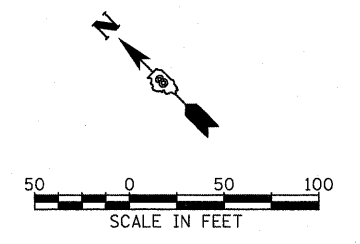


- NOTES:
 1. DETOUR SIGNS PLACED IN PREVIOUS STAGE TO REMAIN.
 2. WARNING SIGNS PLACED ALONG EASTBOUND I-64 IN PREVIOUS STAGE TO REMAIN.



MATCH LINE STA 41+00 EB I-64

FILE NAME = #FILE#	USER NAME = IDOT	DESIGNED - TTB	REVISED -	STATE OF ILLINOIS DEPARTMENT OF TRANSPORTATION	SUGGESTED STAGES OF CONSTRUCTION AND TRAFFIC CONTROL - STAGE 3		F.A.I. RTE.	SECTION	COUNTY	TOTAL SHEETS	SHEET NO.
	PLOT SCALE = 50.0000' / IN.	DRAWN - TTB	REVISED -				64	82-1-2HB	ST. CLAIR	345	84
	PLOT DATE = 3/17/2010	CHECKED - JAH	REVISED -				CONTRACT NO. 76C49				
	DATE - 3/19/2010	REVISED -		SCALE: 1" = 50'	SHEET NO. 1 OF 4 SHEETS	STA. 27+00 TO STA. 41+00	FED. ROAD DIST. NO. ILLINOIS FED. AID PROJECT				