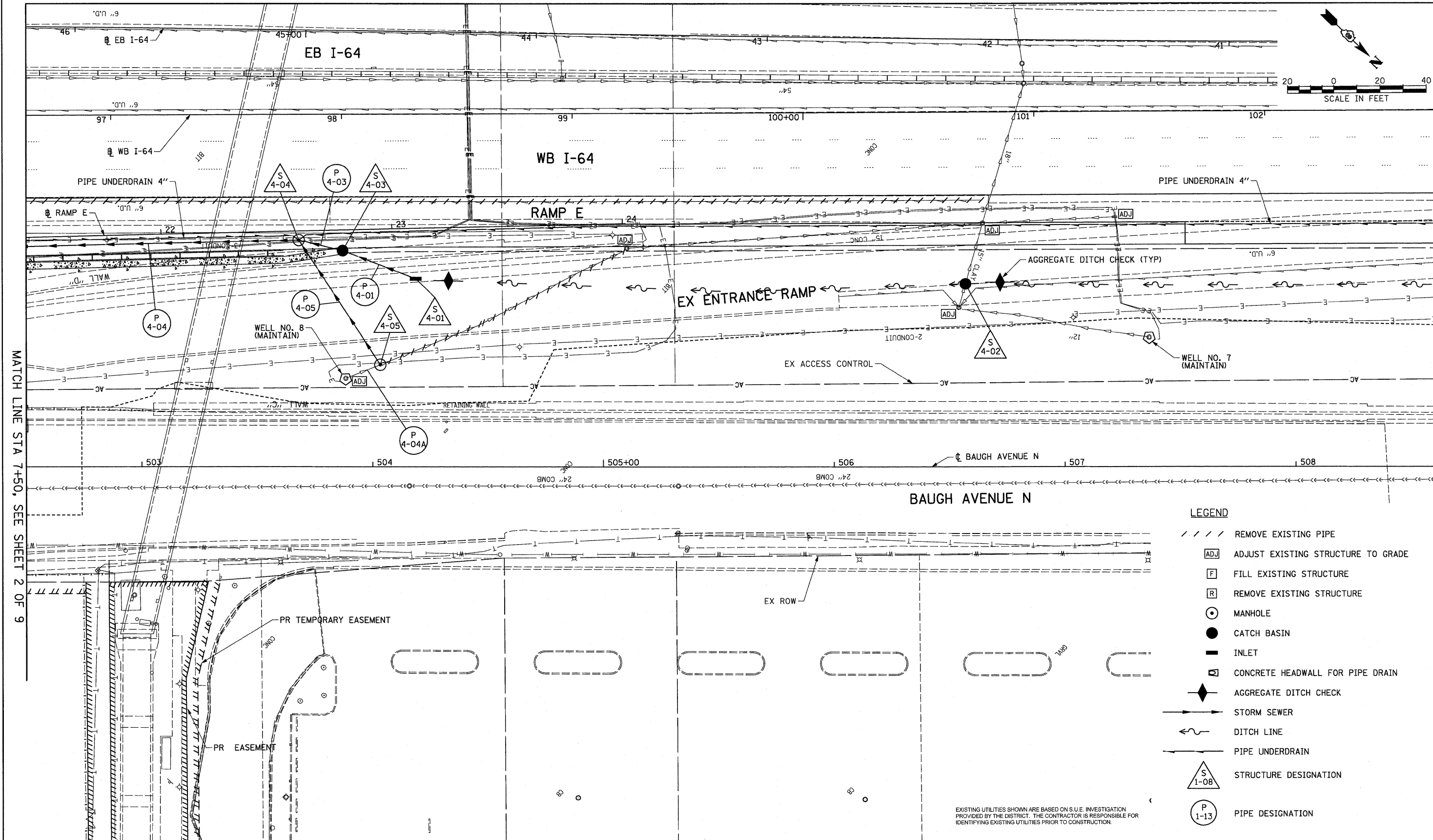
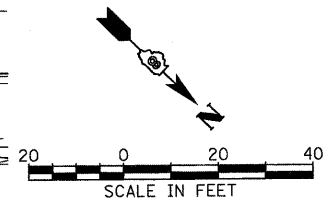


MATCH LINE (SEE ST. CLAIR AVENUE SHEETS)



MATCH LINE STA 7450, SEE SHEET 2 OF 9

MATCH LINE STA 508+60, SEE SHEET 5 OF 9

- LEGEND**
- REMOVE EXISTING PIPE
  - ADJUST EXISTING STRUCTURE TO GRADE
  - FILL EXISTING STRUCTURE
  - REMOVE EXISTING STRUCTURE
  - MANHOLE
  - CATCH BASIN
  - INLET
  - CONCRETE HEADWALL FOR PIPE DRAIN
  - AGGREGATE DITCH CHECK
  - STORM SEWER
  - DITCH LINE
  - PIPE UNDERDRAIN
  - STRUCTURE DESIGNATION
  - PIPE DESIGNATION

EXISTING UTILITIES SHOWN ARE BASED ON S.U.E. INVESTIGATION PROVIDED BY THE DISTRICT. THE CONTRACTOR IS RESPONSIBLE FOR IDENTIFYING EXISTING UTILITIES PRIOR TO CONSTRUCTION.

FILE NAME = #FILE#	USER NAME = IDOT	DESIGNED - TTB	REVISED -	<b>STATE OF ILLINOIS DEPARTMENT OF TRANSPORTATION</b>	<b>DRAINAGE AND UTILITY PLAN - RAMP E</b>	F.A.I. RTE. 64	SECTION 82-1-2HB	COUNTY ST. CLAIR	TOTAL SHEETS 345	SHEET NO. 105		
	PLOT SCALE = 20,000' / IN.	DRAWN - TTB	REVISED -			SCALE: 1"=20'	SHEET NO. 4 OF 9 SHEETS	STA.	TO STA.	CONTRACT NO. 76C49		
	PLOT DATE = 3/19/2010	CHECKED - JAH	REVISED -			FED. ROAD DIST. NO. [ILLINOIS] FED. AID PROJECT						
		DATE - 3/19/2010	REVISED -									