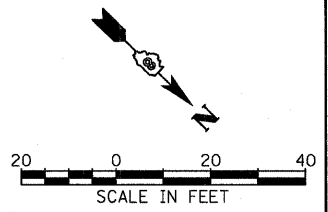
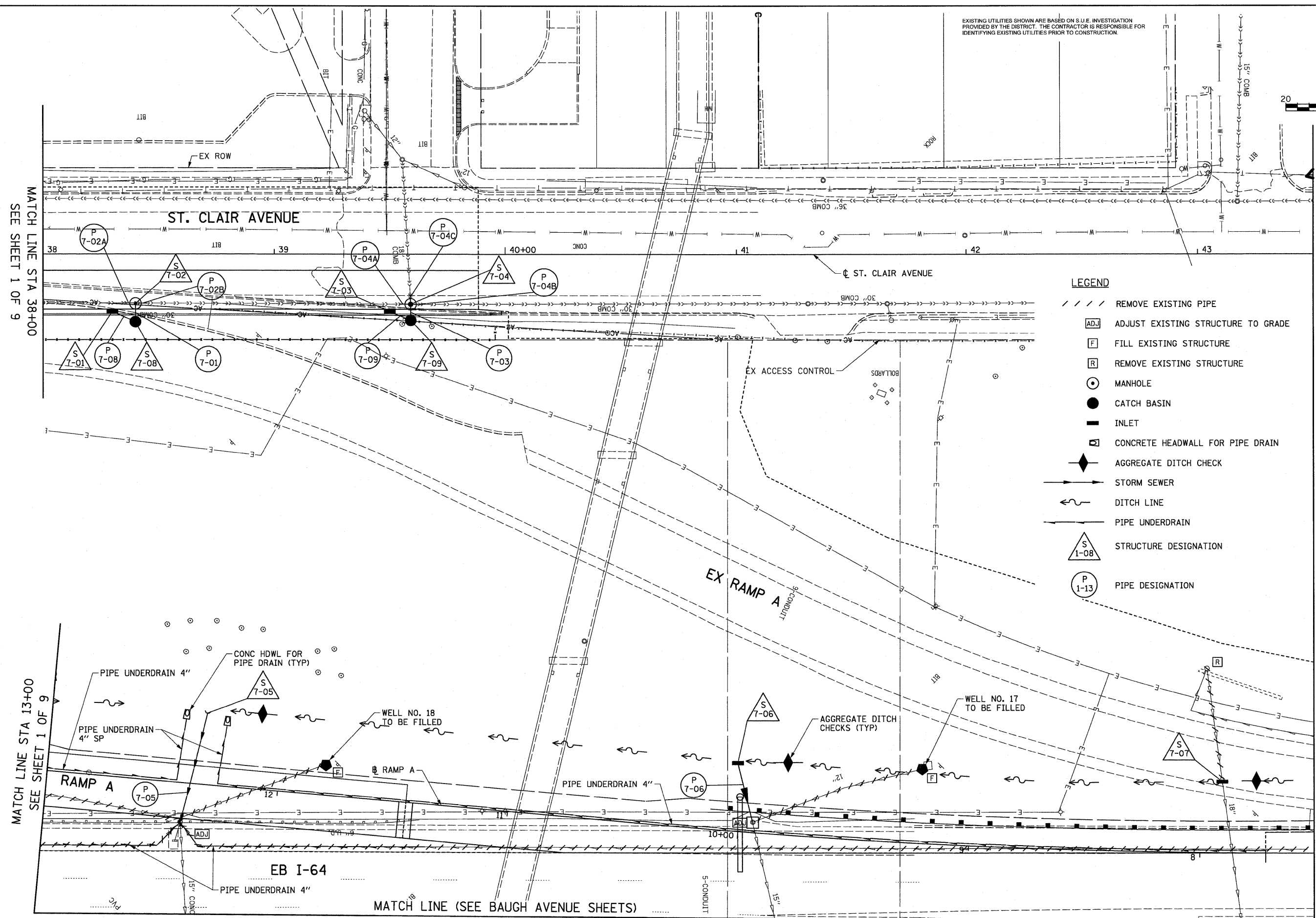


EXISTING UTILITIES SHOWN ARE BASED ON S.U.E. INVESTIGATION PROVIDED BY THE DISTRICT. THE CONTRACTOR IS RESPONSIBLE FOR IDENTIFYING EXISTING UTILITIES PRIOR TO CONSTRUCTION.



MATCH LINE STA 38+00
SEE SHEET 1 OF 9

MATCH LINE STA 43+50, SEE SHEET 8 OF 9



- LEGEND**
- REMOVE EXISTING PIPE
 - ADJUST EXISTING STRUCTURE TO GRADE
 - FILL EXISTING STRUCTURE
 - REMOVE EXISTING STRUCTURE
 - MANHOLE
 - CATCH BASIN
 - INLET
 - CONCRETE HEADWALL FOR PIPE DRAIN
 - AGGREGATE DITCH CHECK
 - STORM SEWER
 - DITCH LINE
 - PIPE UNDERDRAIN
 - STRUCTURE DESIGNATION
 - PIPE DESIGNATION

MATCH LINE STA 13+00
SEE SHEET 1 OF 9

MATCH LINE (SEE BAUGH AVENUE SHEETS)

FILE NAME = #FILE#	USER NAME = IDOT	DESIGNED - TTBB	REVISED -	STATE OF ILLINOIS DEPARTMENT OF TRANSPORTATION	DRAINAGE AND UTILITY PLAN - ST. CLAIR AVENUE	F.A.I. RTE. 64	SECTION 82-1-2HB	COUNTY ST. CLAIR	TOTAL SHEETS 345	SHEET NO. 108
	PLOT SCALE = 20.000' / IN.	DRAWN - TTBB	REVISED -			SCALE: 1"=20'	SHEET NO. 7 OF 9 SHEETS	STA. TO STA.	FED. ROAD DIST. NO.	ILLINOIS FED. AID PROJECT
	PLOT DATE = 3/18/2010	CHECKED - JAH	REVISED -							
		DATE - 3/19/2010	REVISED -							