

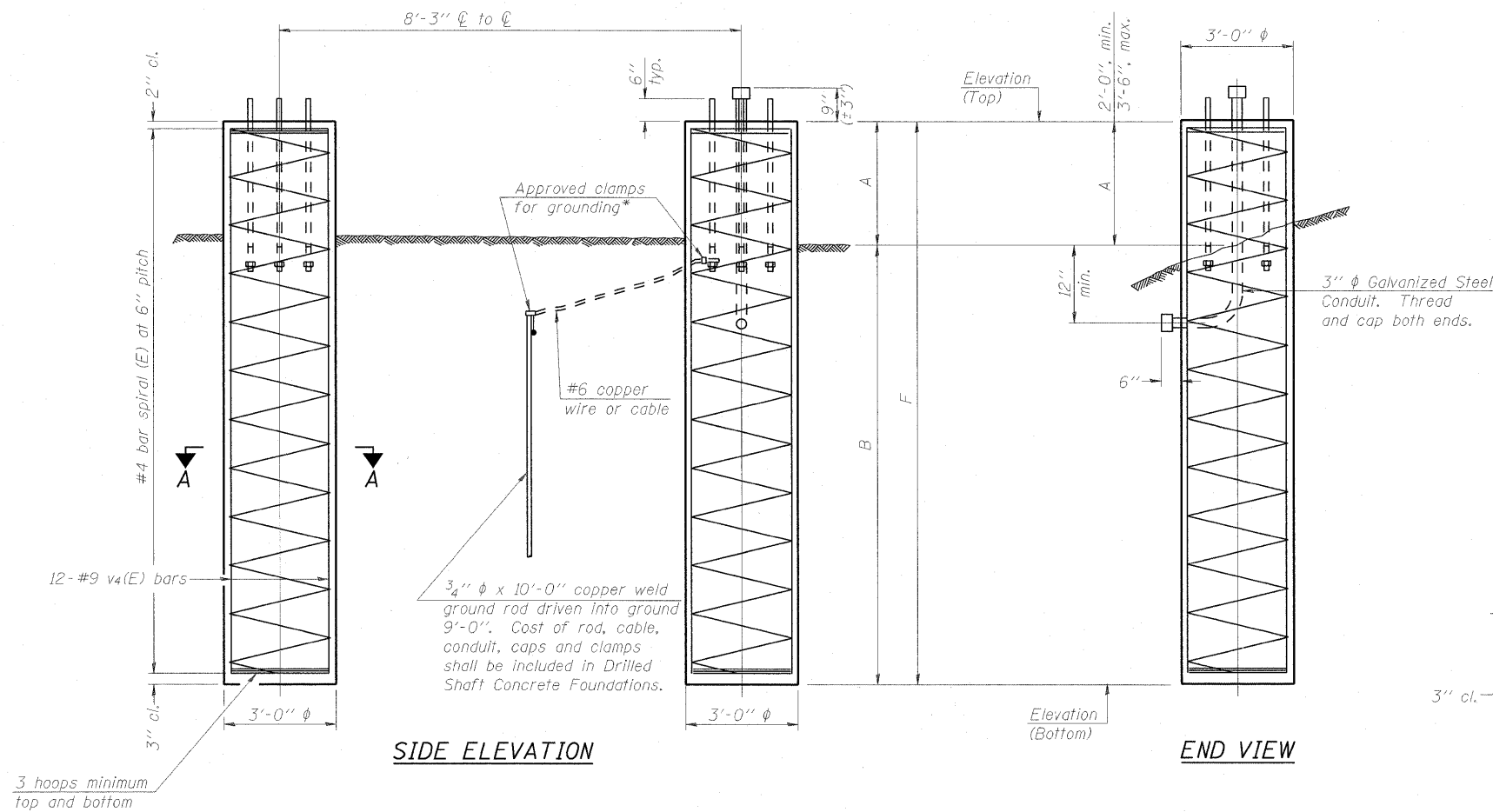
For anchor rod size and placement, see Support Frame Detail Sheet.

* Anchor rod shall be ground or filed to bright metal at clamp and cable connection location.

STATE OF ILLINOIS
DEPARTMENT OF TRANSPORTATION

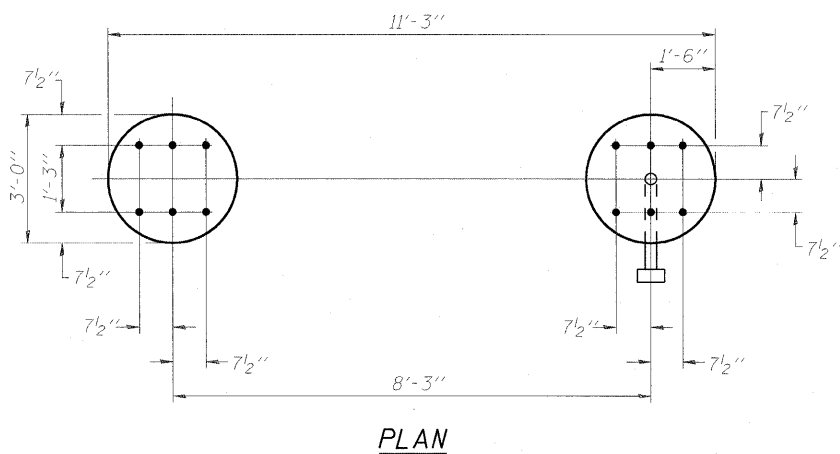
BAR LIST - EACH FOUNDATION

Bar	Number	Size	Length	Shape
v4(E)	24	#9	F less 5"	—
#4 bar spiral (E) - see Side Elevation				



NOTES:

This foundation is a special design and based on soil borings. If the conditions encountered are different than those indicated, the Contractor shall notify the Engineer to determine if the foundation dimensions need to be modified. If dimensions "B" or "F" are revised by more than 12" by the Contractor, "as-built" plans shall be prepared and submitted to the District Bureau of Operations for future reference. A normal surface finish followed by a Bridge Seat Sealer application will be required on concrete surfaces above the lowest elevation 6" below finished ground line. Cost included in Drilled Shaft Concrete Foundation. Ground water is expected to be encountered at elev 400; the contractor is responsible for placing a monolithic concrete pour for the shaft, with no construction joints, voids or soil-water intrusion. The contractor may decide to drill the shaft with casing in the wet or with drilling fluid. The concrete must be pumped, not tremied, to the bottom of the casing. All water or drilling fluid must be displaced by the concrete pumping prior to casing removal.



Structure Number	Station	Left Foundation					Right Foundation					Class DS Concrete (Cu. Yds.)
		Elevation Top	Elevation Bottom	A	B	F	Elevation Top	Elevation Bottom	A	B	F	
ST CLAIR ST	34+75.00	416.00	388.50	2.50	25.00	27.50	416.00	388.80	2.20	25.00	27.20	28.60

DESIGNED VAM
CHECKED MPW
DRAWN TGF
CHECKED MPW

EXAMINED	200
PASSED	ENGINEER OF BRIDGE DESIGN
	ENGINEER OF BRIDGES AND STRUCTURES

NUMBER	REVISION	DATE

DETAILS FOR 10" Ø SUPPORT FRAME
TYPE I-A or II-A TRUSS

OVERHEAD SIGN STRUCTURES DRILLED SHAFT DETAILS					
SHEET NO.	F.A. RTE.	SECTION	COUNTY	TOTAL SHEETS	SHEET NO.
	64	82-1-2HB	ST. CLAIR	345	166
CONTRACT NO. 76C49					
FED ROAD DIST. NO. ILLINOIS FED. AID PROJECT					

Rev.