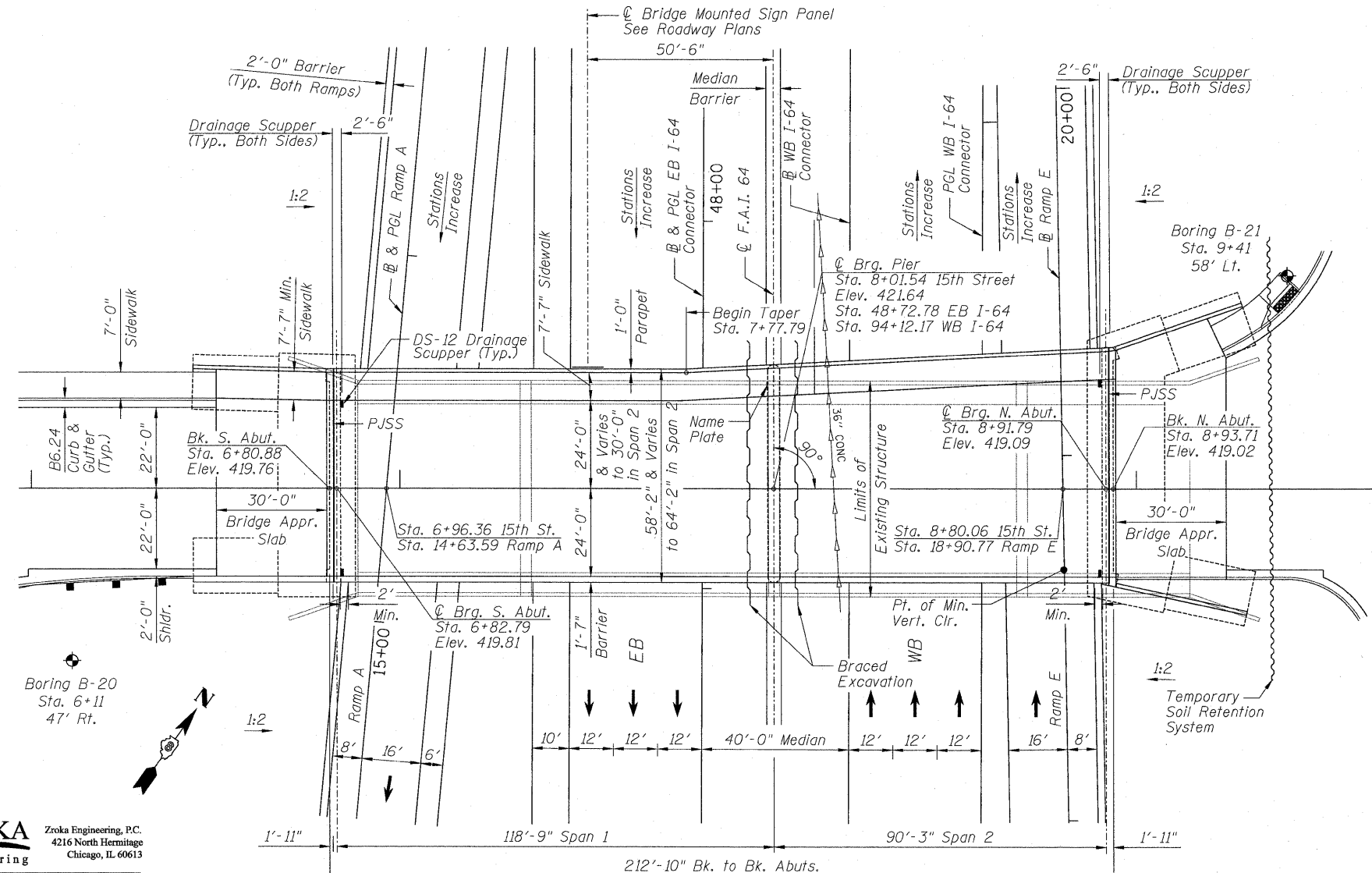
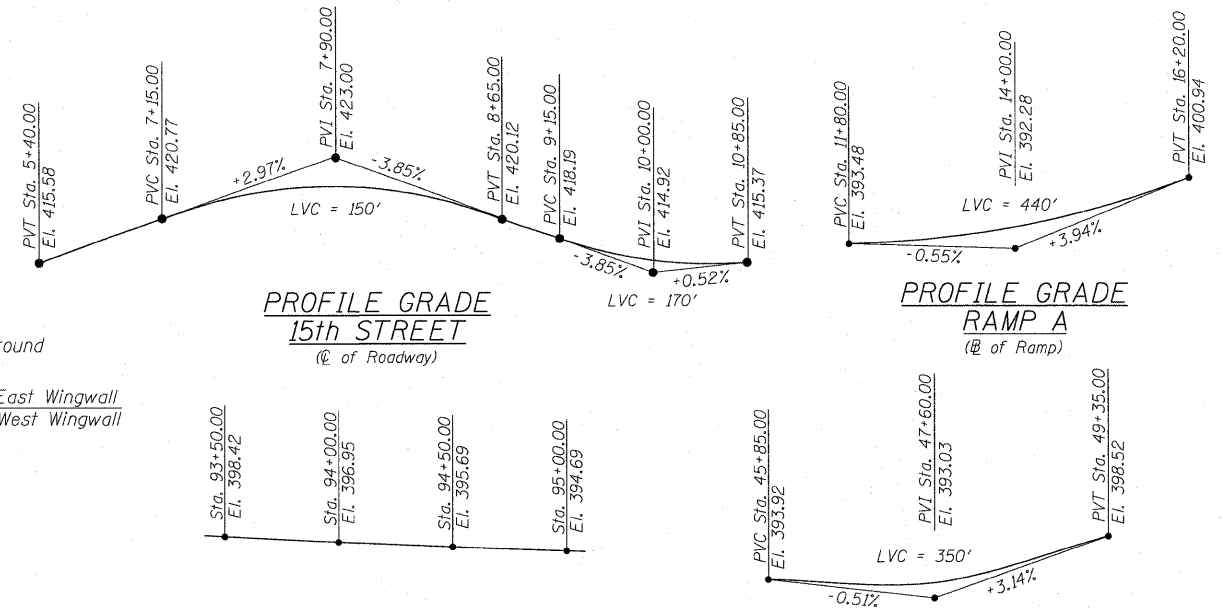
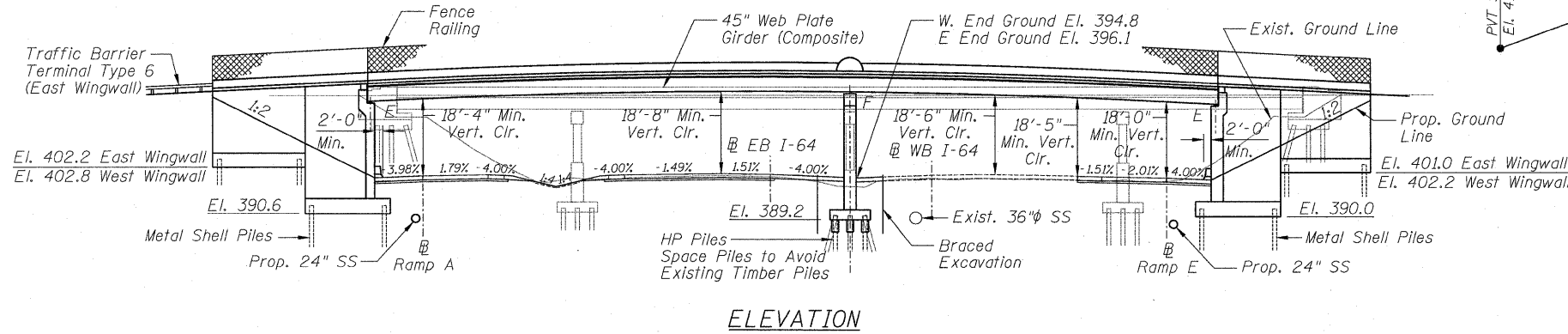


Benchmark: DAS4: Chiseled "Square" Southeast Corner of Traffic Signal Foundation Westerly Quadrant Baugh Ave. & 15th Street, 30' Left, Sta. 5+30 (Baugh Ave.), Elev. 415.74

Existing Structure: S.N. 082-0151, four span 226'-0" bk. to bk. abutments, 58'-10" o. to o. R.C. slab on rolled steel beams supported on pile bent abutments and multi-column piers. Built as FAI Rte. 64, Section 82-1HB-1 at Sta. 75+85.50 in 1970. The contractor shall remove the existing structure as per special provision Removal of Existing Structures No. 1. The road shall be closed during construction and traffic detoured.

No Salvage.

STATE OF ILLINOIS
DEPARTMENT OF TRANSPORTATION



CURVE RAMP A C6-1

PI Sta. = 9+01.08
 $\Delta = 4^\circ 59' 40''$ (Rt)
 $D = 1^\circ 55' 42''$
 $R = 2,971.21'$
 $T = 129.58'$
 $L = 259.00'$
 $E = 2.82'$
 $e = 5.0\%$
 $T.R. = 0.00'$
 $S.E. Run = 0.00'$ and $42.00'$
 $P.C. Sta. = 7+71.49$
 $P.T. Sta. = 10+30.50$

CURVE RAMP A C6-2

PI Sta. = 18+21.27
 $\Delta = 67^\circ 55' 49''$ (Rt)
 $D = 20^\circ 50' 05''$
 $R = 275.00'$
 $T = 185.25'$
 $L = 326.04'$
 $E = 56.57'$
 $e = 7.9\%$
 $T.R. = 0.00'$
 $S.E. Run = 143.00'$ and $106.00'$
 $P.C. Sta. = 16+36.03$
 $P.T. Sta. = 19+62.07$

CURVE RAMP E-2

PI Sta. = 17+13.80
 $\Delta = 3^\circ 44' 23''$ (Rt)
 $D = 2^\circ 51' 53''$
 $R = 2,000.00'$
 $T = 65.29'$
 $L = 130.54'$
 $E = 1.07'$
 $e = 5.1\%$
 $T.R. = 0.00'$
 $S.E. Run = 115.00'$ and $99.00'$
 $P.C. Sta. = 16+48.51$
 $P.T. Sta. = 17+79.05$

LOADING HL-93
Allow 50#/sq. ft. for future wearing surface

DESIGN SPECIFICATIONS
2007 AASHTO LRFD Bridge Design Specifications with 2008 Interims

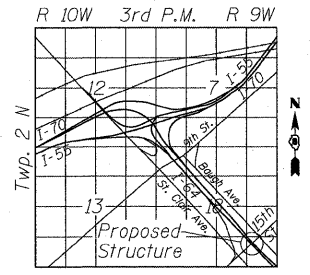
DESIGN STRESSES

FIELD UNITS

$f_c = 3,500$ psi
 $f_y = 60,000$ psi (reinforcement)
 $f_y = 36,000$ psi (M270 Grade 36)
 $f_y = 50,000$ psi (M270 Grade 50)

SEISMIC DATA

Seismic Performance Zone (SPZ) = 2
 Design Spectral Acceleration @ 1.0 sec (SD1) = 0.24g
 Design Spectral Acceleration @ 0.2 sec (SDS) = 0.54g
 Soil Site Class = D



GENERAL PLAN AND ELEVATION
15TH ST. OVER I-64
F.A.I. RTE. 64 SEC. 82-1-2HB
ST. CLAIR COUNTY
STATION 8+01.54
STRUCTURE NO. 082-0377

ZROKA Engineering, P.C.
 4216 North Hermitage
 Chicago, IL 60613

| | |
|----------|-----|
| DESIGNED | LAS |
| CHECKED | JLA |
| DRAWN | SAW |
| CHECKED | LAS |

3-31-2010

APPROVED
 FOR STRUCTURAL ADEQUACY ONLY

Robert E. Anderson (TSP)
 ENGINEER OF BRIDGES AND STRUCTURES



Deborah A. Zroka
 Signature
 March 12, 2010
 Date
 November 30, 2010
 Expires

| | | | | | |
|--------------------------|--------------------|---------------------|---------------------|---------------------------|------------------|
| SHEET NO. 1 44 SHEETS | F.A.I. RTE. 64 | SECTION 82-1-2HB | COUNTY ST. CLAIR | TOTAL SHEETS 345 | SHEET NO. 208 |
| | CONTRACT NO. 76C49 | | | ILLINOIS FED. AID PROJECT | |

REVISED 4/15/2010