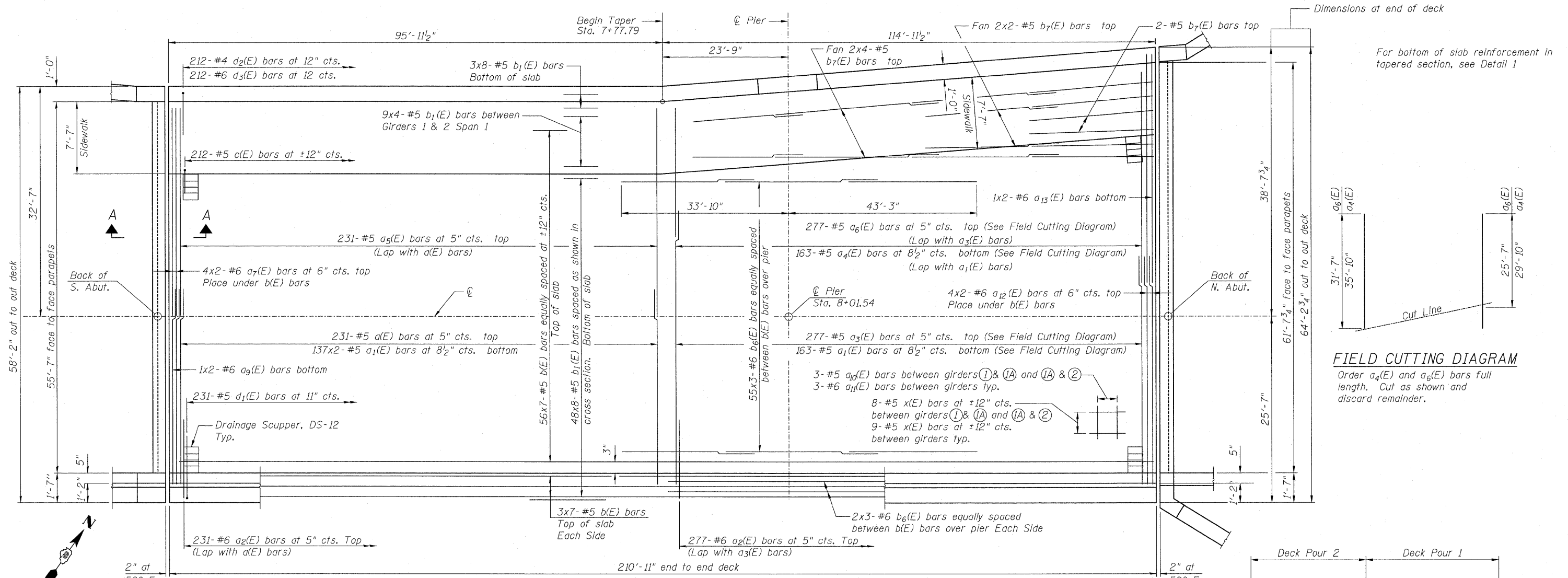
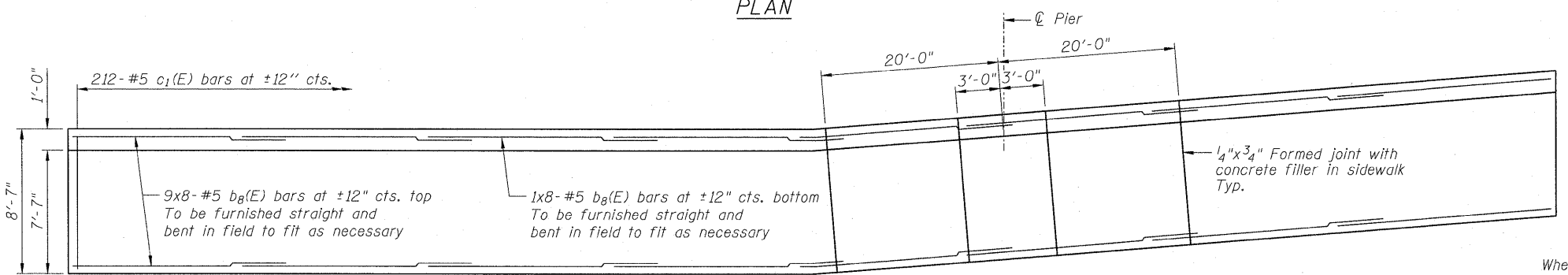


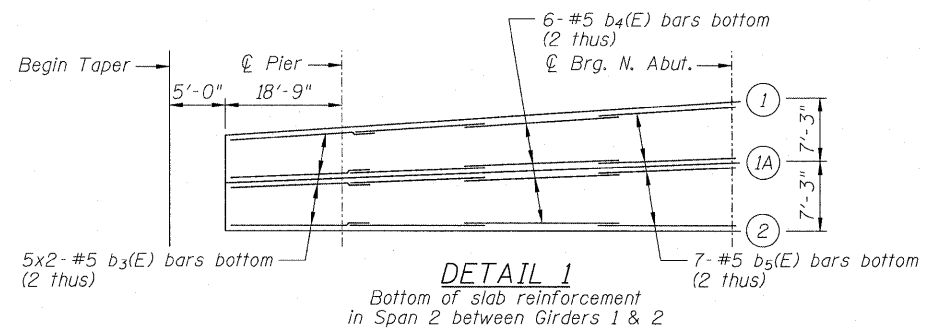
STATE OF ILLINOIS
DEPARTMENT OF TRANSPORTATION



PLAN



SIDEWALK PLAN
Showing Reinforcement

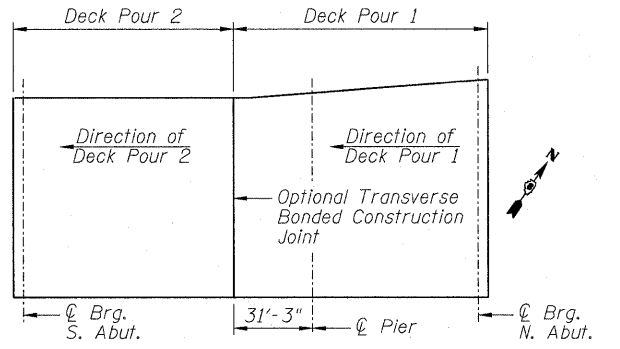


DETAIL 1
Bottom of slab reinforcement
in Span 2 between Girders 1 & 2

For bottom of slab reinforcement in tapered section, see Detail 1

FIELD CUTTING DIAGRAM

Order a4(E) and a6(E) bars full length. Cut as shown and discard remainder.



DECK POUR SEQUENCE PLAN

When the deck pour is stopped for the day at one or more of the transverse bonded construction joints in the deck pouring sequence as shown, the next pour shall not be made until both of the following are met:

1. At least 72 hours shall have elapsed from the end of the previous pour.
2. The concrete strength shall have attained a minimum flexural strength of 650 psi or a minimum compressive strength of 3500 psi.

SUPERSTRUCTURE PLAN
STRUCTURE NO. 082-0377

Notes:
See Sheets 10, 11, 12 & 13 of 44 for superstructure details.
See Sheet 13 of 44 for Bill of Material.
Bars indicated thus 56x7-#5 etc. indicates 56 lines of bars with 7 lengths per line.
See Sheet 11 of 44 for parapet reinforcement.

MIN. BAR LAPS

- #5 bar = 2'-2"
- #6 bar = 2'-7"
- #7 bar = 3'-5"

ZROKA engineering
Zroka Engineering, P.C.
4216 North Hermitage
Chicago, IL 60613

DESIGNED	LAS
CHECKED	JLA
DRAWN	SAW
CHECKED	LAS

3-31-2010

SHEET NO. 9 44 SHEETS	F.A.I. RTE.	SECTION	COUNTY	TOTAL SHEETS	SHEET NO.
	64	82-1-2HB	ST. CLAIR	345	216
CONTRACT NO. 76C49					
ILLINOIS FED. AID PROJECT					

Revised 4/15/2010