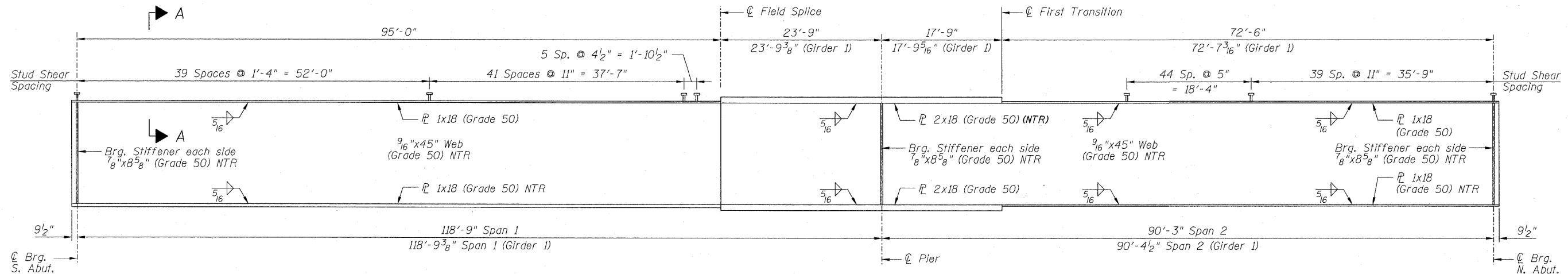


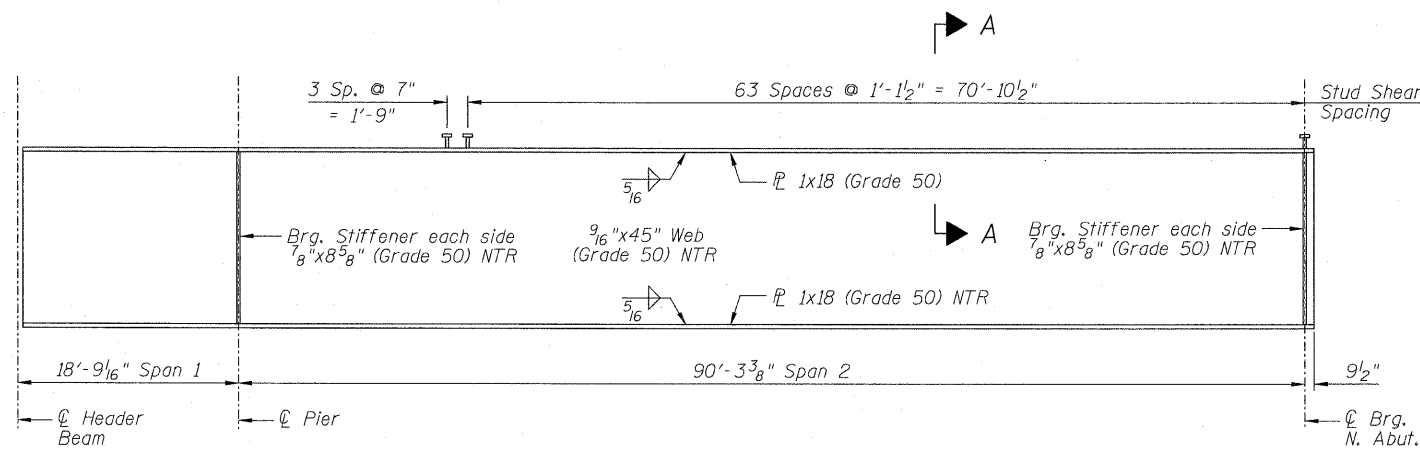
STATE OF ILLINOIS
DEPARTMENT OF TRANSPORTATION



GIRDERS 1 THRU 7 ELEVATION

(Unless Noted Otherwise)

Load carrying components designated "NTR" shall conform to the Supplemental Requirements for Notch Toughness, Zone 2.



GIRDER 1A ELEVATION

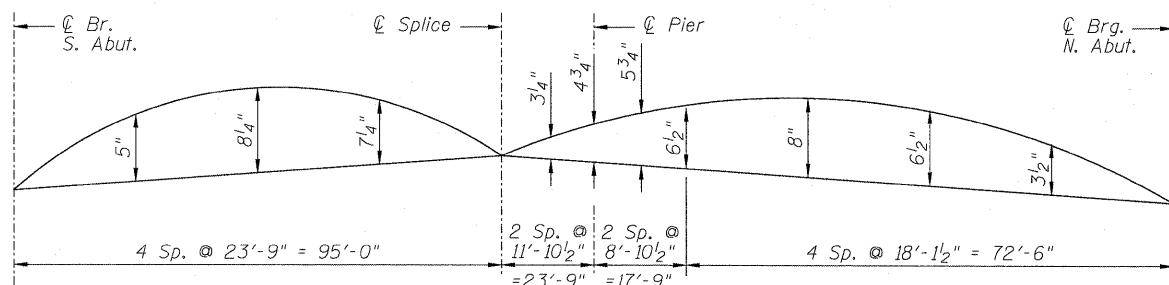
Load carrying components designated "NTR" shall conform to the Supplemental Requirements for Notch Toughness, Zone 2.

TOP OF WEB ELEVATIONS

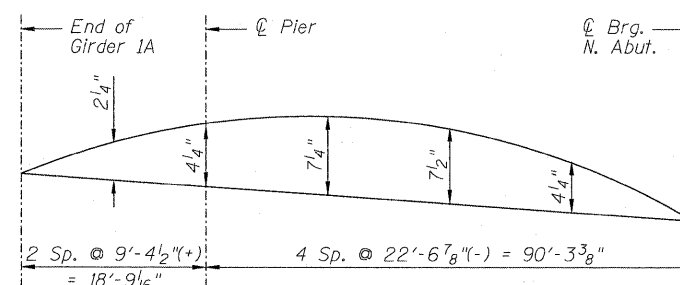
(For Fabrication Only)

*Top of Web elevation for Girder 1A is located at the south end of Girder 1A

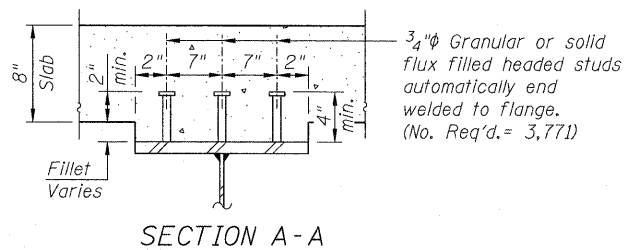
Girder	℄ Brg. S. Abut.	℄ Field Splice	℄ Pier	First Transition	℄ Brg. N. Abut.
1	418.397	420.265	420.094	419.817	417.547
1A		*420.408	420.296		417.697
2	418.574	420.442	420.297	420.040	417.849
3	418.751	420.619	420.474	420.217	418.026
4	418.928	420.796	420.652	420.394	418.203
5	418.897	420.765	420.620	420.362	418.172
6	418.720	420.588	420.443	420.185	417.995
7	418.543	420.410	420.266	420.008	417.818



CAMBER DIAGRAM GIRDERS 1 THRU 7



CAMBER DIAGRAM GIRDER 1A



SECTION A-A

ZROKA engineering
Zroka Engineering, P.C.
4216 North Hermitage
Chicago, IL 60613

DESIGNED	LAS
CHECKED	JLA
DRAWN	SAW
CHECKED	LAS

3-31-2010

STRUCTURAL STEEL DETAILS 2
STRUCTURE NO. 082-0377

SHEET NO. 23 44 SHEETS	F.A.I. RTE.	SECTION	COUNTY	TOTAL SHEETS	SHEET NO.
	64	82-1-2HB	ST. CLAIR	345	230
			CONTRACT NO. 76C49		
ILLINOIS FED. AID PROJECT					

REVISED 4/15/2010