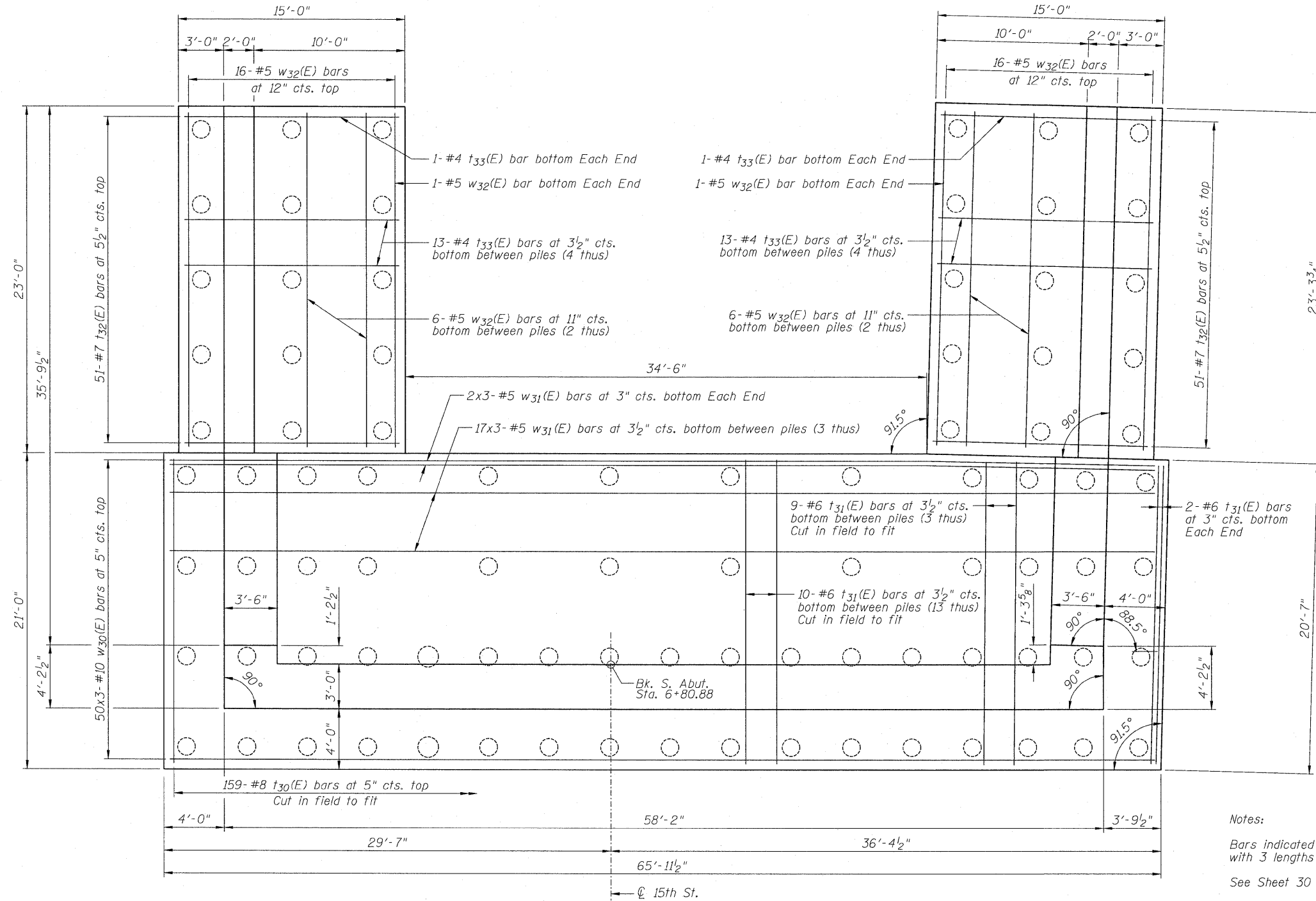


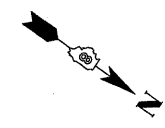
STATE OF ILLINOIS
DEPARTMENT OF TRANSPORTATION



Notes:
Bars indicated thus: 2x3-#5 etc. indicates 2 lines of bars with 3 lengths per line.
See Sheet 30 of 44 for Bill of Material.

SOUTH ABUTMENT FOOTING PLAN

MIN. BAR LAPS
#5 bar = 2'-2"
#10 bar = 7'-3"



ZROKA engineering
Zroka Engineering, P.C.
4216 North Hermitage
Chicago, IL 60613

DESIGNED	LAS
CHECKED	JLA
DRAWN	SAW
CHECKED	LAS

3-31-2010

SOUTH ABUTMENT FOOTING PLAN
STRUCTURE NO. 082-0377

SHEET NO. 27 44 SHEETS	F.A.I. RTE.	SECTION	COUNTY	TOTAL SHEETS	SHEET NO.
	64	82-1-2HB	ST. CLAIR	345	234
			CONTRACT NO. 76C49		
ILLINOIS FED. AID PROJECT					

REVISED 4/12/2010