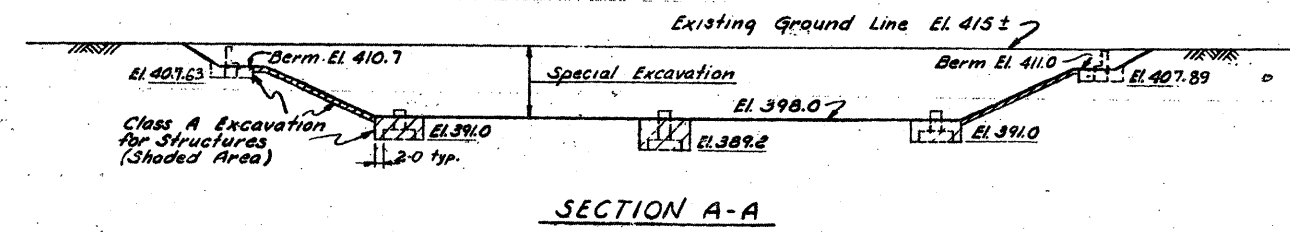
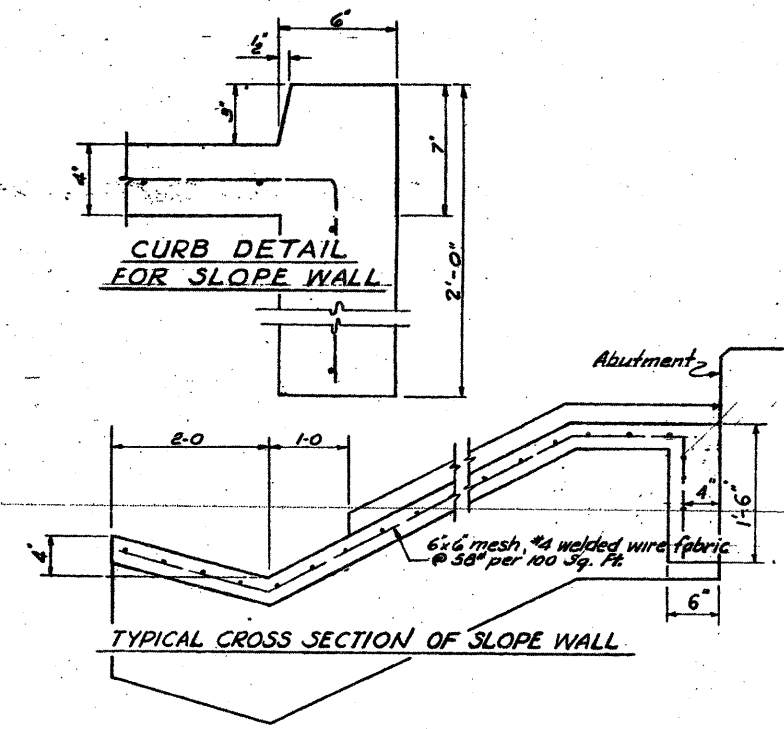
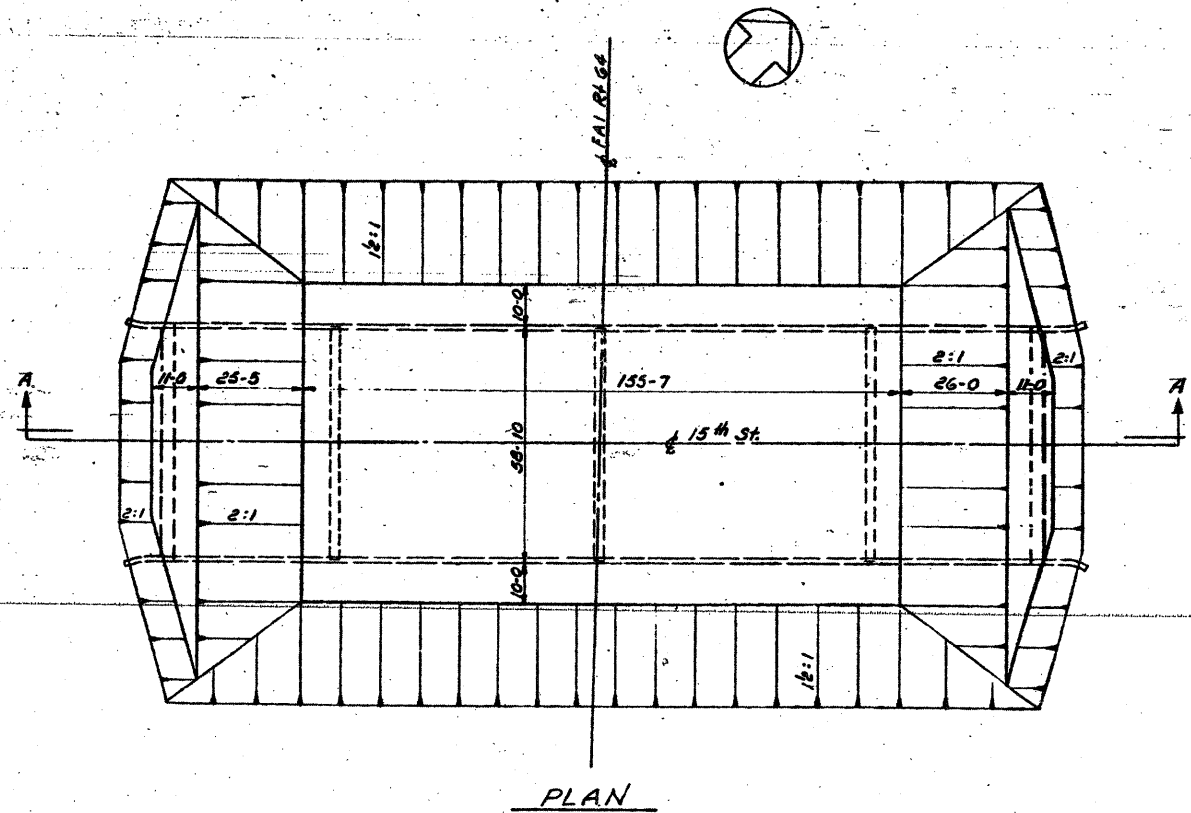


FOR INFORMATION ONLY

FEDERAL-AID ROUTE NO.	SECTION	COUNTY	TOTAL SHEETS	SHEET NO.
F.A.I.R. 64	82-1HB-1	ST. CLAIR	42	26
FED. ROAD DIV. NO. 4 ILLINOIS PROJECT				



Drawn by - A.J.C.
Checked by - R.N.

STATE OF ILLINOIS
DEPARTMENT OF PUBLIC WORKS & BLDGS.
DIVISION OF HIGHWAYS
EARTHWORK AND SLOPE WALLS
15TH ST.
OVER F.A.I.R. 64
STATION 75 + 85.50
F.A.I.R. 64 ST. CLAIR CO. SECTION 82-1HB-1
H. W. LOCHNER, INC.
CONSULTING ENGINEERS
CHICAGO, ILLINOIS
SHEET 10 of 11

FILE NAME =	USER NAME = pmsarino	DESIGNED	REVISD -	STATE OF ILLINOIS DEPARTMENT OF TRANSPORTATION	EXISTING 15TH STREET BRIDGE AND RETAINING WALL 'D' PLANS	F.A.I. RTE.	SECTION	COUNTY	TOTAL SHEETS	SHEET NO.	
#FILE#		DRAWN PP	REVISD -			64	82-1-2HB	ST. CLAIR	345	267	
		CHECKED AB	REVISD -			CONTRACT NO. 76C49					
		DATE 03/19/10	REVISD -			FED. ROAD DIST. NO. ILLINOIS FED. AID PROJECT					
				SCALE: NONE SHEET NO. 15 OF 22 SHEETS STA. TO STA.							