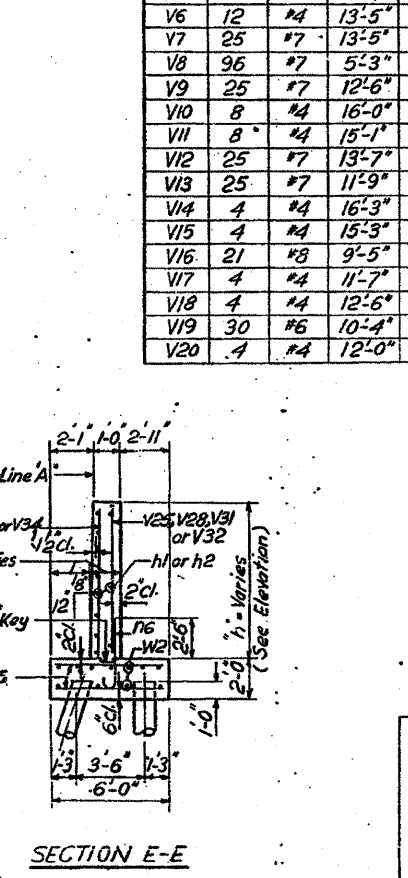
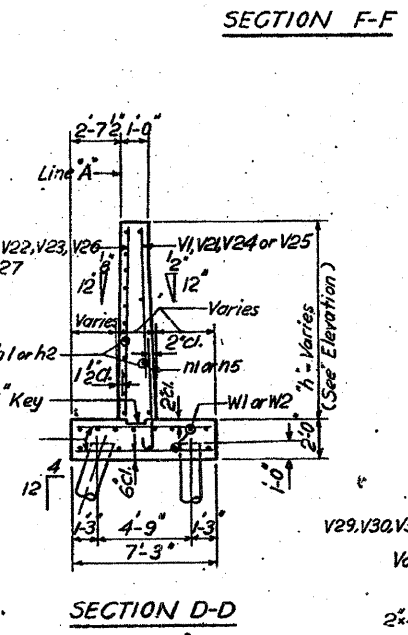
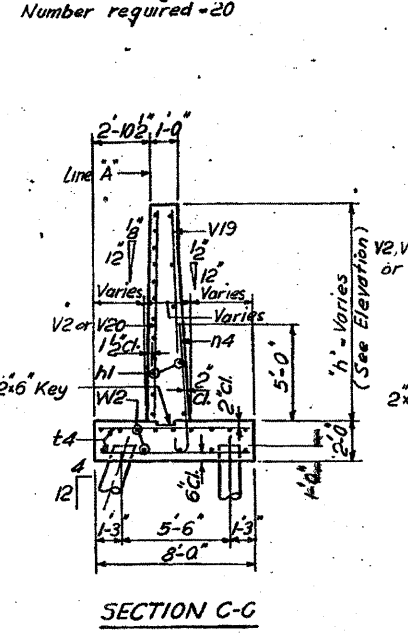
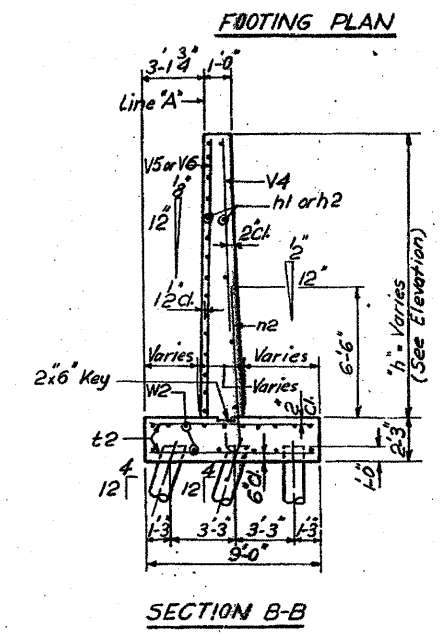
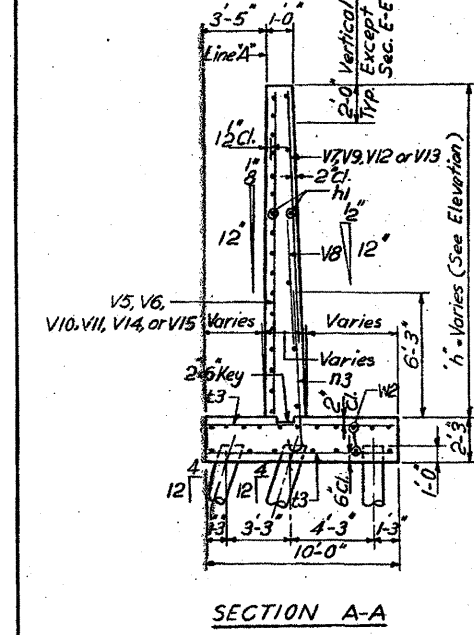
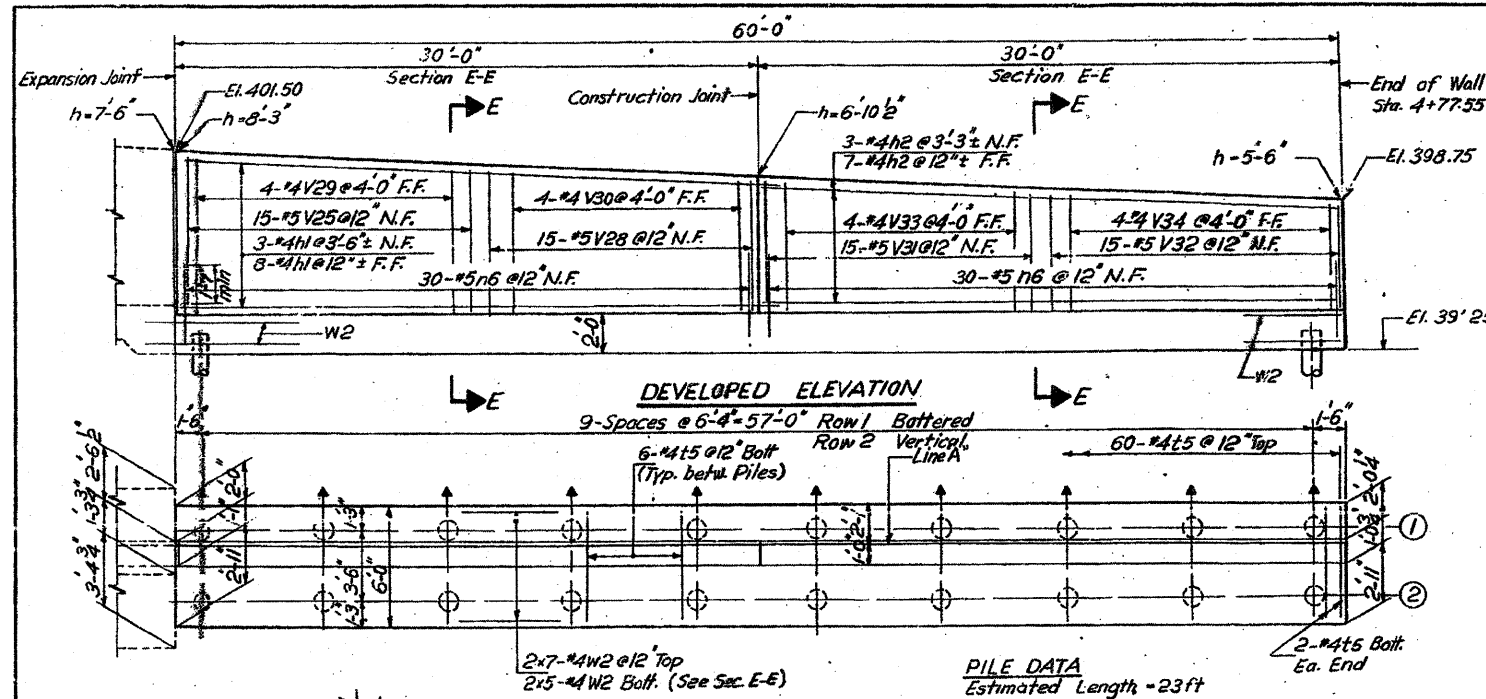


FOR INFORMATION ONLY

ROUTE NO.	SECTION	COUNTY	TOTAL SHEETS	SHEET NO.
F.A. I. - 64	82-1HB	ST. CLAIR	110	54
FED. ROAD DIV. NO. 4		ILLINOIS PROJECT		



BILL OF MATERIAL

Bar	No.	Size	Length	Shape	Bar	No.	Size	Length	Shape
h1	168	#4	31'-0"	—	V21	30	#5	9'-0"	—
h2	77	#4	29'-9"	—	V22	4	#4	9'-2"	—
					V24	4	#4	10'-2"	—
					V24	15	#5	8'-2"	—
					V25	30	#5	7'-3"	—
n1	90	#7	6'-7"	C	V26	4	#4	8'-3"	—
n2	123	#8	9'-4"	C	V27	4	#4	7'-3"	—
n3	196	#9	9'-3"	C	V28	15	#5	6'-8"	—
n4	30	#8	7'-7"	C	V29	4	#4	7'-6"	—
n5	30	#6	5'-2"	C	V30	4	#4	6'-9"	—
n6	60	#5	4'-7"	C	V31	15	#5	5'-10"	—
					V32	15	#5	5'-2"	—
					V33	4	#4	6'-0"	—
					V34	4	#4	5'-4"	—
V1	60	#5	9'-2"	—	t1	248	#5	6'-11"	—
V2	12	#4	11'-0"	—	t2	136	#6	8'-8"	—
V3	8	#4	10'-9"	—	t3	449	#6	9'-8"	—
V4	42	#8	10'-6"	—	t4	74	#5	7'-8"	—
V5	12	#4	14'-4"	—	t5	118	#4	5'-8"	—
V6	12	#4	13'-5"	—					
V7	25	#7	13'-5"	—					
V8	95	#7	5'-3"	—					
V9	25	#7	12'-6"	—					
V10	8	#4	16'-0"	—					
V11	8	#4	15'-1"	—					
V12	25	#7	13'-7"	—	W1	26	#4	30'-4"	—
V13	25	#7	11'-9"	—	W2	186	#4	31'-6"	—
V14	4	#4	16'-3"	—	W3	8	#5	8'-8"	—
V15	4	#4	15'-3"	—	W4	10	#5	7'-11"	—
V16	21	#8	9'-5"	—	W5	11	#5	5'-10"	—
V17	4	#4	11'-7"	—	W6	11	#5	4'-5"	—
V18	4	#4	12'-6"	—	W7	8	#5	4'-1"	—
V19	30	#6	10'-4"	—					
V20	4	#4	12'-0"	—					

Item	Unit	Total
Class X Concrete <td>Cu. Yds.</td> <td>524</td>	Cu. Yds.	524
Reinforcement Bars <td>Lbs</td> <td>40,620</td>	Lbs	40,620

Bars W3 thru W7

Bar	"a"	"b"
W3	5'-8"	4'-0"
W4	4'-11"	3'-6"
W5	2'-10"	2'-0"
W6	1'-5"	1'-0"
W7	1'-1"	0'-9"

Bars n1 thru n6

Bar	"a"	"b"
n1	5'-9"	10'
n2	8'-3"	14'
n3	8'-8"	13'
n4	6'-6"	11'
n5	4'-6"	8'
n6	4'-0"	7'

DESIGNED BY P.X.
 DRAWN BY J.J.
 CHECKED BY P.X.

STATE OF ILLINOIS
 DIVISION OF HIGHWAYS
 DETAILS
 RETAINING WALL "D"

F.A. I. RT. 64 ST. CLAIR CO. SECTION 82-1HB
 H. W. LOCHNER, INC. ENGINEERS CHICAGO, ILLINOIS SHEET 4 OF 6