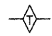
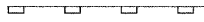

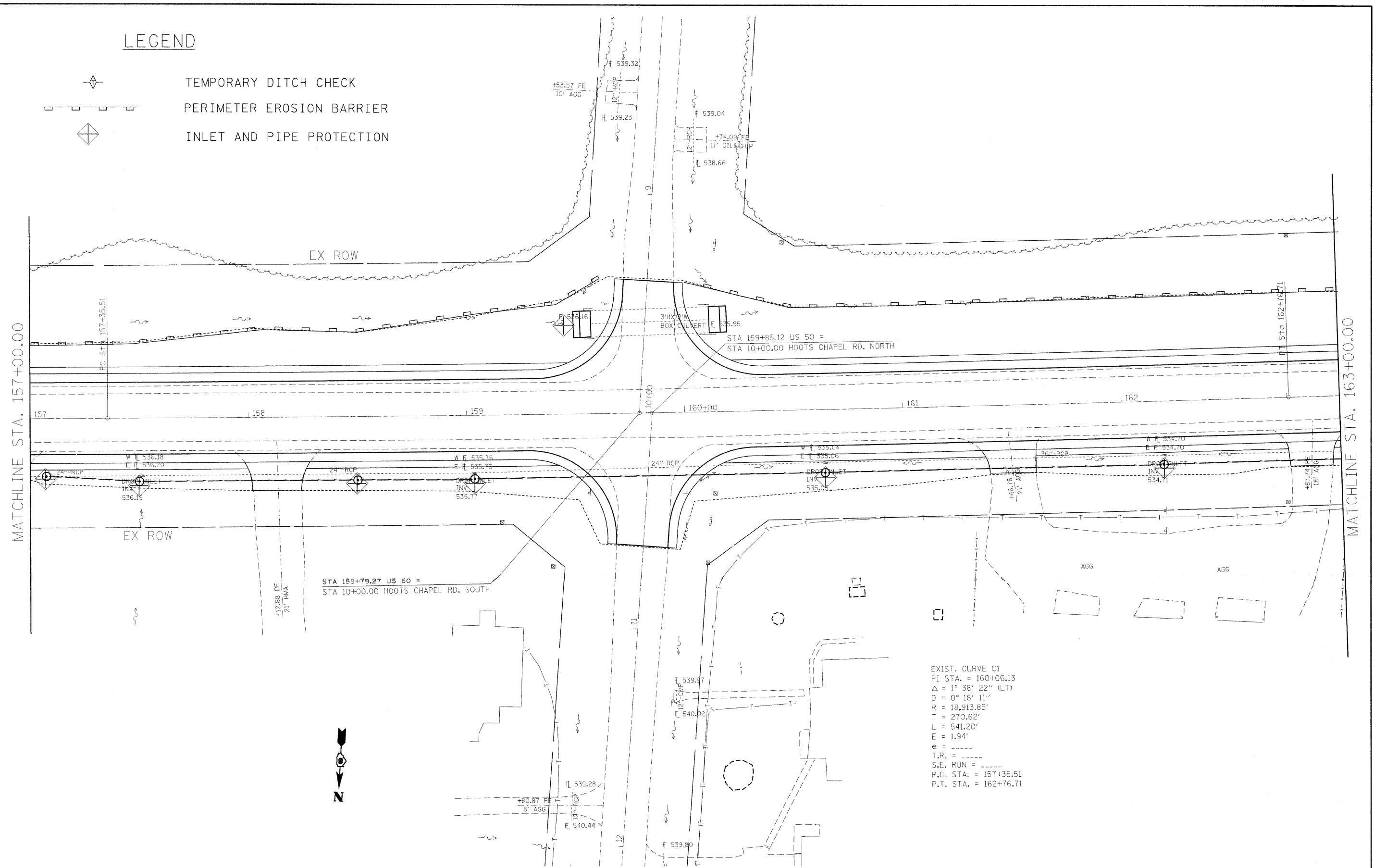


LEGEND

-  TEMPORARY DITCH CHECK
-  PERIMETER EROSION BARRIER
-  INLET AND PIPE PROTECTION



EXIST. CURVE C1
 PI STA. = 160+06.13
 $\Delta = 1^\circ 38' 22''$ (LT)
 $D = 0^\circ 18' 11''$
 $R = 18,913.85'$
 $T = 270.62'$
 $L = 541.20'$
 $E = 1.94'$
 $e = \text{---}$
 $T.R. = \text{---}$
 $S.E. \text{ RUN} = \text{---}$
 $P.C. \text{ STA.} = 157+35.51$
 $P.T. \text{ STA.} = 162+76.71$

FILE NAME =	USER NAME = dntelmonjn	DESIGNED -	REVISED -	STATE OF ILLINOIS DEPARTMENT OF TRANSPORTATION	EROSION CONTROL (SAFETY AREA 1)	F.A.P. RTE.	SECTION	COUNTY	TOTAL SHEETS	SHEET NO.	
ct:\pwork\p\dot\dntelmonjn\d0153338\876d42-ah-eros.dgn	PLOT SCALE = 28,0000' / IN.	DRAWN -	REVISED -			327	17RS-3	MARION	96	44	
PLOT DATE = 3/16/2010	DATE -	CHECKED -	REVISED -			CONTRACT NO. 76D42					
		DATE -	REVISED -			FED. ROAD DIST. NO. - ILLINOIS FED. AID PROJECT					

SCALE: 1"=20' SHEET NO. ___ OF ___ SHEETS STA. 157+00.00 TO STA. 163+00.00