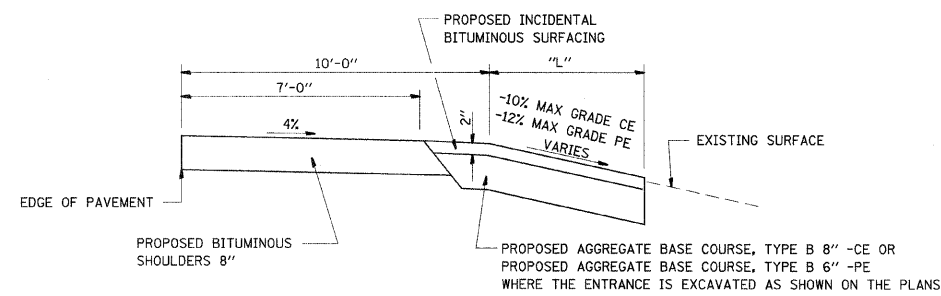
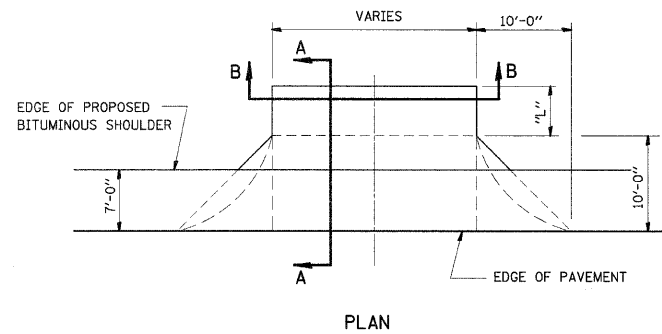
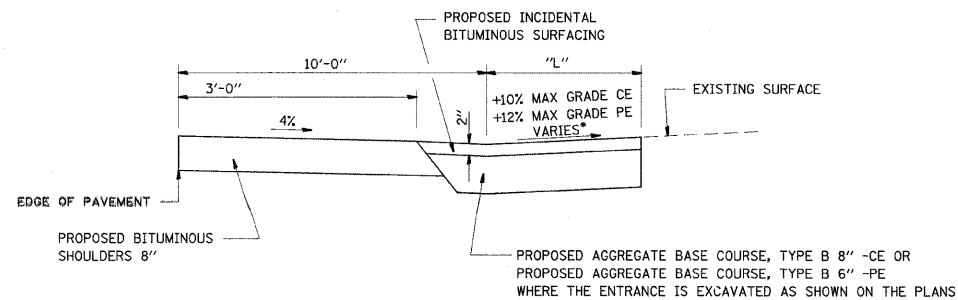


DETAIL OF BITUMINOUS ENTRANCES
W/ BITUMINOUS SHOULDERS
COMMERCIAL & PRIVATE ENTRANCES

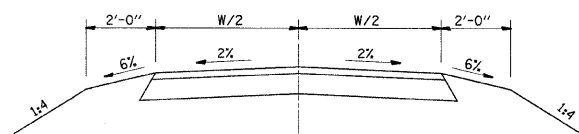


SECTION A-A WITH NEGATIVE GRADE



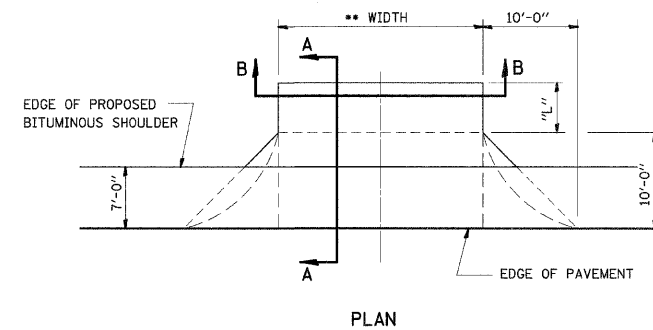
SECTION A-A WITH POSITIVE GRADE

• SEE CROSS SECTIONS FOR SLOPES

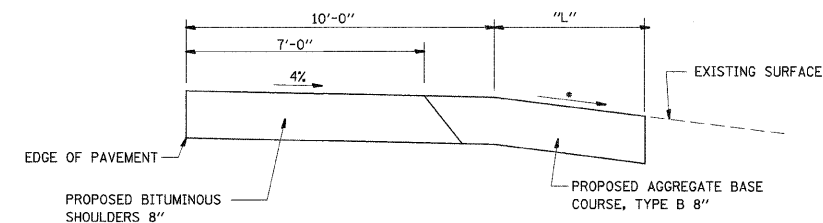


SECTION B-B
COMMERCIAL & PRIVATE ENTRANCES

DETAIL OF FIELD ENTRANCES
W/ BITUMINOUS SHOULDERS

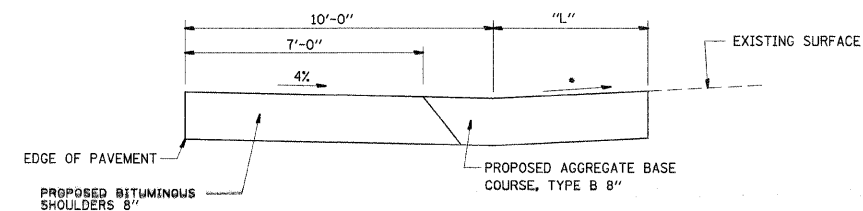


•• ALLOWABLE ENTRANCE WIDTHS:
FIELD 20' MINIMUM ALLOWABLE
ENTRANCE WIDTH SHALL BE
INTERPRETED TO BE THE WIDTHS
AT THE SPECIFIED COMPLETED RADIUS.



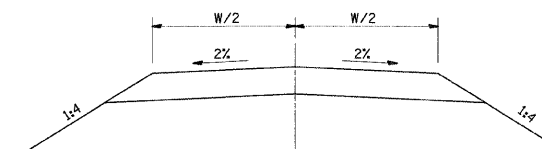
SECTION A-A WITH NEGATIVE GRADE

• SEE CROSS SECTIONS FOR SLOPES



SECTION A-A WITH POSITIVE GRADE

• SEE CROSS SECTIONS FOR SLOPES



SECTION B-B

FILE NAME =	USER NAME = dntelmanjn	DESIGNED -	REVISD -
ca\pawork\pawidot\dntelmanjn\d0153208\76d43-shl-plan.dgn		DRAWN -	REVISD -
	PLOT SCALE = 50,0000 1/ IN.	CHECKED -	REVISD -
	PLOT DATE = 3/16/2010	DATE -	REVISD -

STATE OF ILLINOIS
DEPARTMENT OF TRANSPORTATION

ENTRANCE DETAILS

SCALE: _____ SHEET NO. ____ OF ____ SHEETS STA. _____ TO STA. _____

F.A.P. RTE.	SECTION	COUNTY	TOTAL SHEETS	SHEET NO.
327	17RS-3	MARION	96	55
CONTRACT NO. 76D42				
FED. ROAD DIST. NO. _____ ILLINOIS FED. AID PROJECT				