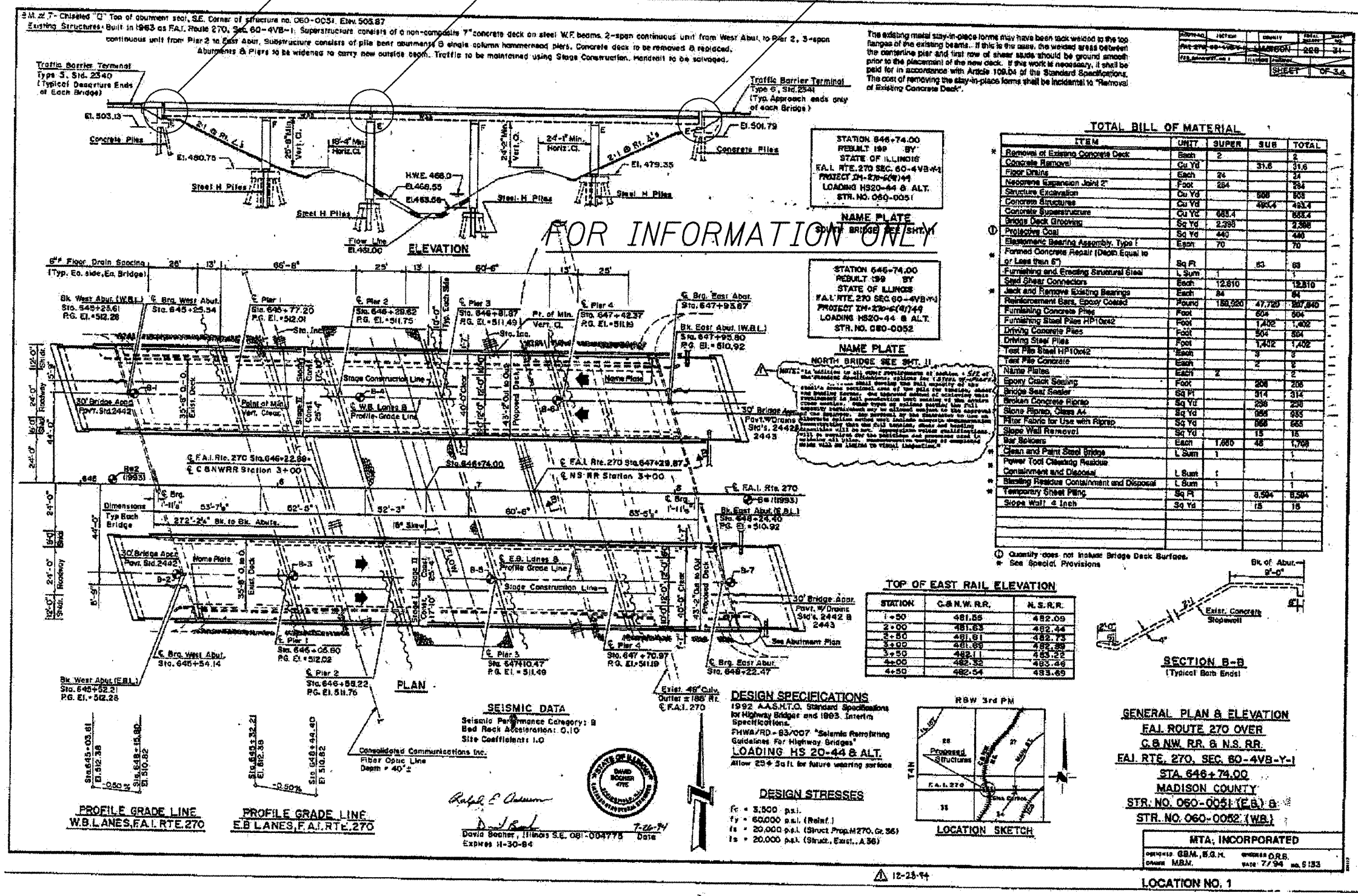


Wash the deck surface, drains, top and inside parapet faces and these areas under expansion joints.



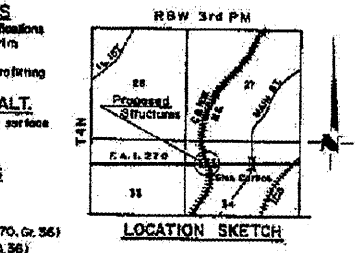
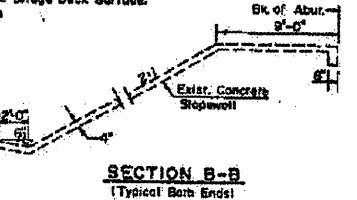
STATION 646+74.00  
REBLT 199 BY  
STATE OF ILLINOIS  
F.A.I. RTE. 270 SEC. 60-4VB-W1  
PROJECT 01-270-60W-44  
LOADING HS20-44 @ A.L.T.  
STR. NO. 060-0051

STATION 646+74.00  
REBLT 199 BY  
STATE OF ILLINOIS  
F.A.I. RTE. 270 SEC. 60-4VB-W1  
PROJECT 01-270-60W-44  
LOADING HS20-44 @ A.L.T.  
STR. NO. 060-0052

DATE	REVISION	BY	TOTAL SHEETS	SHEET NO.
01-270-60W-44		JAMSON	228	31

TOTAL BILL OF MATERIAL			
ITEM	UNIT	SUPER	SUB TOTAL
* Removal of Existing Concrete Deck	Each	2	2
Concrete Remove	Cu Yd		31.8
Fiber Drains	Each	24	24
Non-sag Expansion Joint 2"	Foot	284	284
Structure Excavation	Cu Yd		888
Concrete Structures	Cu Yd		4824
Concrete Superstructure	Cu Yd		685.4
Brook Deck Grooving	Sq Yd	2,388	2,388
Protective Coat	Sq Yd	440	440
Element Bearing Assembly, Type I	Each	70	70
* Formed Concrete Repair (Depth Equal to or Less than 6")	Sq Ft		83
Furnishing and Erecting Structural Steel	L Sum		12,810
Steel Shear Connectors	Each	12,810	12,810
Jack and Remove Existing Bearings	Each	84	84
Reinforcement Bars, Epoxy Coated	Pound	188,980	47,729
Furnishing Concrete Pile	Foot		604
Furnishing Steel Piles HP10x42	Foot		1,402
Driving Concrete Piles	Foot		507
Driving Steel Piles	Foot		1,402
Test Pile Steel HP10x42	Each	2	2
Test Pile Concrete	Each	2	2
Name Plates	Each	2	2
Epoxy Crack Sealing	Foot		208
Bridge Seal Sealer	Sq Ft		314
Broken Concrete Repair	Sq Yd		236
Stone Repair, Class A1	Sq Yd		985
Filter Fabric for Use with Riprap	Sq Yd		868
Slope Wall Removal	Sq Yd		15
Soil Spacers	Each	1,880	48
Clean and Paint Steel Bridge	L Sum		1
Power Tool Cleaning Machine	L Sum		1
Concrete and Disposal	L Sum		1
Removal Residue Containment and Disposal	L Sum		1
Temporary Sheet Piling	Sq Ft		8,504
Slope Wall 4 inch	Sq Yd		15

TOP OF EAST RAIL ELEVATION		
STATION	C.N.W.R.R.	N.S.R.R.
1+50	481.55	482.09
2+00	481.83	482.44
2+50	481.61	482.73
3+00	481.89	482.89
3+50	481.11	483.22
4+00	482.32	483.56
4+50	482.54	483.69



GENERAL PLAN & ELEVATION  
F.A.I. ROUTE 270 OVER  
C.N.W.R.R. & N.S.R.R.  
F.A.I. RTE. 270, SEC. 60-4VB-Y-1  
STA. 646+74.00  
MADISON COUNTY  
STR. NO. 060-0051 (E.B.) &  
STR. NO. 060-0052 (W.B.)

MTA, INCORPORATED  
1000 N. G.M., S.D.H. CHICAGO, ILL. 60610  
OWNER: M.B.N. DATE: 7/34, NO. 6153



David Becher, Illinois S.E. 081-004775 Date 7-22-21  
Expire 11-30-24

Location 3  
SN 060-0051(E.B.) & 0052(W.B.)  
I-270 over Bike Trail & stream  
Sta. 646+74.00

FILE NAME	USER NAME	DESIGNED	REVISED	STATE OF ILLINOIS	GENERAL PLAN & ELEVATION - FOR INFORMATION ONLY	F.A.I. RTE.	SECTION	COUNTY	TOTAL SHEETS	SHEET NO.
#FILEL#	#USER#	A. Vinson	-	DEPARTMENT OF TRANSPORTATION	SCALE: SHEET NO. OF SHEETS STA. TO STA.	0-9	BRIDGE CLEANING 2010-1	MADISON	8	7
		DRAWN A. Vinson	REVISED -							CONTRACT NO. 76D45
		CHECKED J. Uehle	REVISED -							FED. ROAD DIST. NO. ILLINOIS FED. AID PROJECT
		DATE 6-11-2010	REVISED -							