

F.A.I. RTE.	SECTION	COUNTY	TOTAL SHEETS	SHEET NO.
64	82-71-5	ST. CLAIR	7	1
		ILLINOIS	CONTRACT NO. 76D56	

D-98-021-10

**STANDARDS**

- 000001-05
- 701101-02
- 701106-02
- 701451-01
- 701901-01
- 720001-01
- 720011-01
- 836001

**INDEX OF SHEETS**

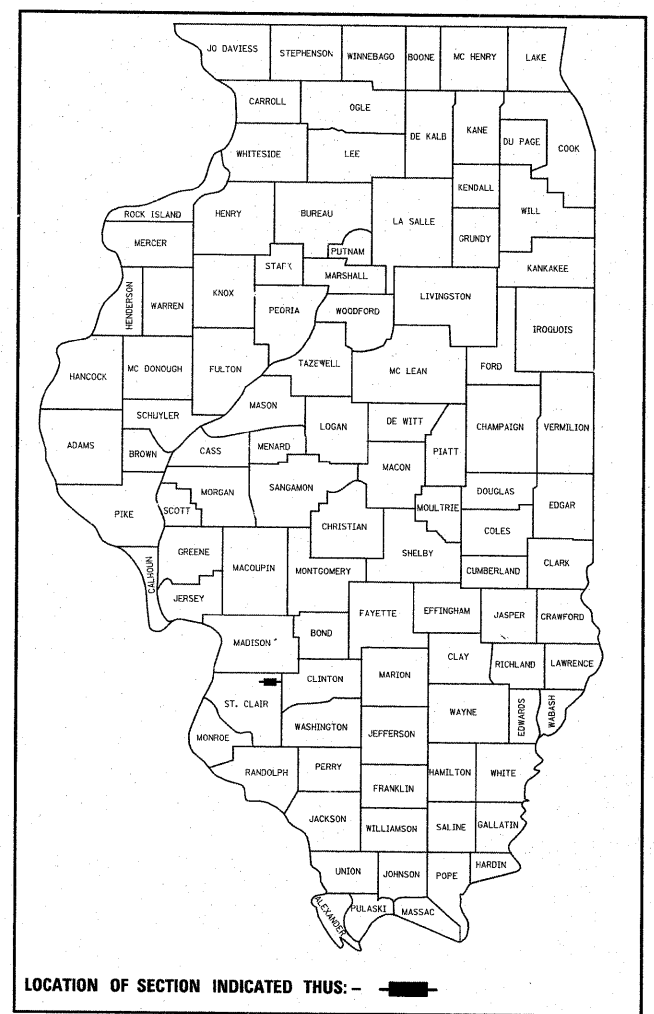
- 1 COVER SHEET
- 2 SUMMARY OF QUANTITIES
- 3 GENERAL NOTES AND LEGEND
- 4-6 QUEUE DETECTION CAMERA SYSTEM
- 7 WIRING DIAGRAM AND DETAILS

STATE OF ILLINOIS  
DEPARTMENT OF TRANSPORTATION  
DIVISION OF HIGHWAYS  
**PROPOSED  
HIGHWAY PLANS**

FAI ROUTE 64  
SECTION 82-71-5  
PROJECT --

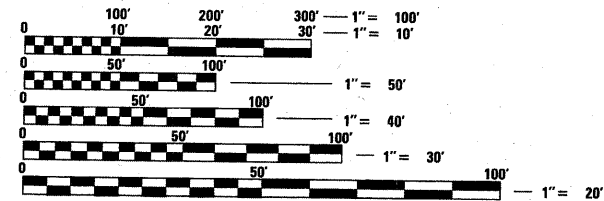
O'FALLON WEIGH STATION  
QUEUE DETECTION CAMERA SYSTEM  
ST. CLAIR COUNTY

C-98-034-10



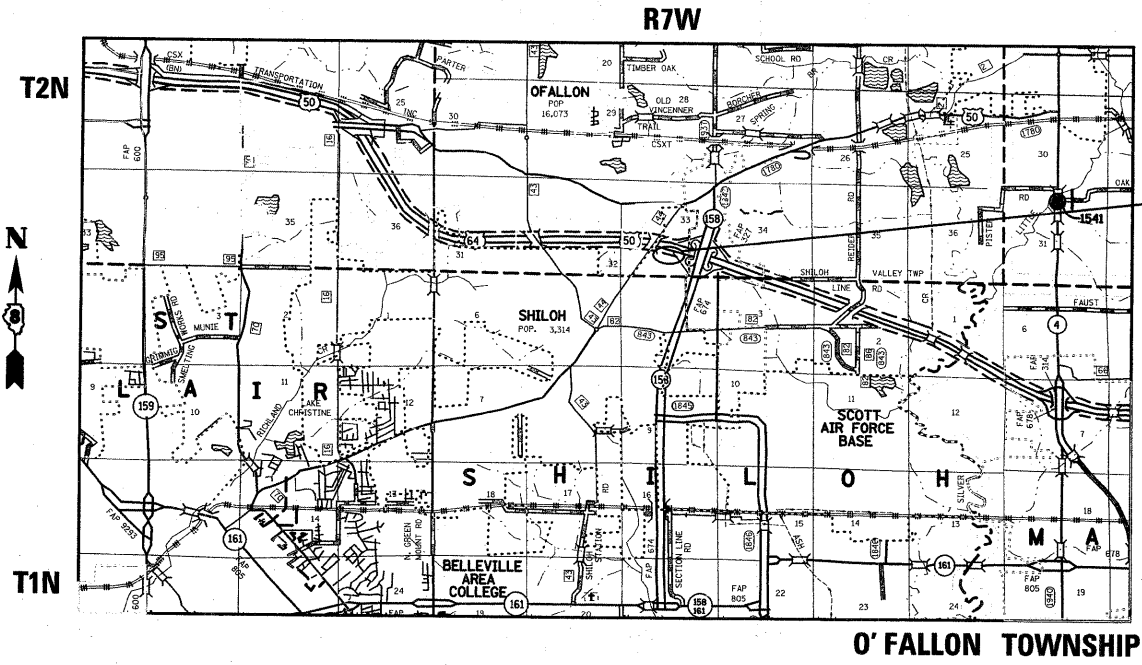
**TRAFFIC DATA (EB ONLY):**

2009 ADT = 18000 (ACTUAL)  
2010 ADT = 18200 (ESTIMATED)



FULL SIZE PLANS HAVE BEEN PREPARED USING STANDARD ENGINEERING SCALES. REDUCED SIZED PLANS WILL NOT CONFORM TO STANDARD SCALES. IN MAKING MEASUREMENTS ON REDUCED PLANS, THE ABOVE SCALES MAY BE USED.

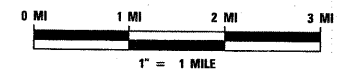
J.U.L.I.E.  
JOINT UTILITY LOCATION INFORMATION FOR EXCAVATION  
1-800-892-0123  
OR 811



PROJECT LOCATION  
1 MILE WEST OF IL-158,  
ALONG EB I-64

PROJECT ENGINEER: PATTI LEBEAU (618) 346-3179  
PROJECT MANAGER: BHARAT PATEL (618) 346-3190

CONTRACT NO. 76D56



STATE OF ILLINOIS  
DEPARTMENT OF TRANSPORTATION  
DIVISION OF HIGHWAYS

SUBMITTED March 18 2010  
Man C. Fani  
DEPUTY DIRECTOR OF HIGHWAYS, REGION 5 ENGINEER

May 7 2010  
Scott E. Stitt, P.E.  
Acting ENGINEER OF DESIGN AND ENVIRONMENT

May 7 2010  
Christine M. Road  
DIRECTOR OF HIGHWAYS, CHIEF ENGINEER

**PRINTED BY THE AUTHORITY  
OF THE STATE OF ILLINOIS**

# SUMMARY OF QUANTITIES

SUMMARY OF QUANTITIES			URBAN 100% STATE	CONSTRUCTION TYPE CODE Y-222		
CODE NO	ITEM	UNIT	TOTAL QUANTITIES	Y032-IF		
81702441	ELECTRC CABLE IN CONDUIT, 600V (XLP-TYPE USE), 2/C NO. 12, 1/C NO.12 GROUND	FOOT	100	100		
81702455	ELECTRIC CABLE IN CONDUIT, 600V (XLP-TYPE USE), 3/C NO. 16	FOOT	50	50		
X0326882	VIDEO CAMERA DETECTION SYSTEM	EACH	1	1		
67000400	ENGINEER'S FIELD OFFICE, TYPE A	CAL MO	2	2		
67100100	MOBILIZATION	L SUM	1	1		
70100820	TRAFFIC CONTROL AND PROTECTION, STANDARD 701451	L SUM	1	1		
80300100	LOCATING UNDERGROUND CABLE	FOOT	100	100		
81000600	CONDUIT IN TRENCH, 2" DIA., GALVANIZED STEEL	FOOT	130	130		
81702100	ELECTRIC CABLE IN CONDUIT, 600V (XLP-TYPE USE), 1/C NO. 12	FOOT	100	100		
81900200	TRENCH AND BACKFILL FOR ELECTRICAL WORK	FOOT	65	65		
83021100	LIGHT POLE, ALUMINUM, TRANSFORMER BASE, 35 FT. M.H., 4 FT. MAST ARM	EACH	1	1		
83600200	LIGHT POLE FOUNDATION, 24" DIAMETER	FOOT	5.5	5.5		
87100110	FIBER OPTIC CABLE IN CONDUIT, NO. 62.5/125, 6F	FOOT	100	100		
87900100	DRILL EXISTING FOUNDATION	EACH	2	2		
X0301576	COAXIAL CABLE IN CONDUIT	FOOT	50	50		

FILE NAME =	USER NAME = patelebm	DESIGNED -	REVISED -	<b>STATE OF ILLINOIS DEPARTMENT OF TRANSPORTATION</b>	<b>SUMMARY OF QUANTITIES</b>	F.A.I. RTE.	SECTION	COUNTY	TOTAL SHEETS	SHEET NO.	
cr:\pw\work\PKWIDOT\patelebm\0167050\087656-shr-TS.dgn	PLOT SCALE = 50.0000' / IN.	DRAWN -	REVISED -			64	82-TI-5	ST. CLAIR	7	2	
PLOT DATE = 3/16/2010	DATE -	CHECKED -	REVISED -			CONTRACT NO. 76D56					
		DATE -	REVISED -			SCALE:	SHEET NO. OF SHEETS	STA. TO STA.	FED. ROAD DIST. NO. ILLINOIS FED. AID PROJECT		

**LEGEND**

- C - CAMERA
- ⓪ - POLE MOUNT CAMERA BOX
- Ⓛ - SIGNAL CONDUIT
- Ⓛ - POWER CONDUIT
- ⓐ - PROPOSED CAMERA
- ==== - PROPOSED UNDERGROUND CONDUIT
- - PROPOSED LIGHT POLE, 35'
- - PROPOSED MONITOR, WALL MOUNT
- ⊠ - EXISTING CONTROLLER
- ⊠ - EXISTING HANDHOLE
- ⊠ - EXISTING HEAVY DUTY HANDHOLE
- - EXISTING UNDERGROUND CONDUIT
- - EXISTING BURIED CABLE

**ELECTRICAL GENERAL NOTES**

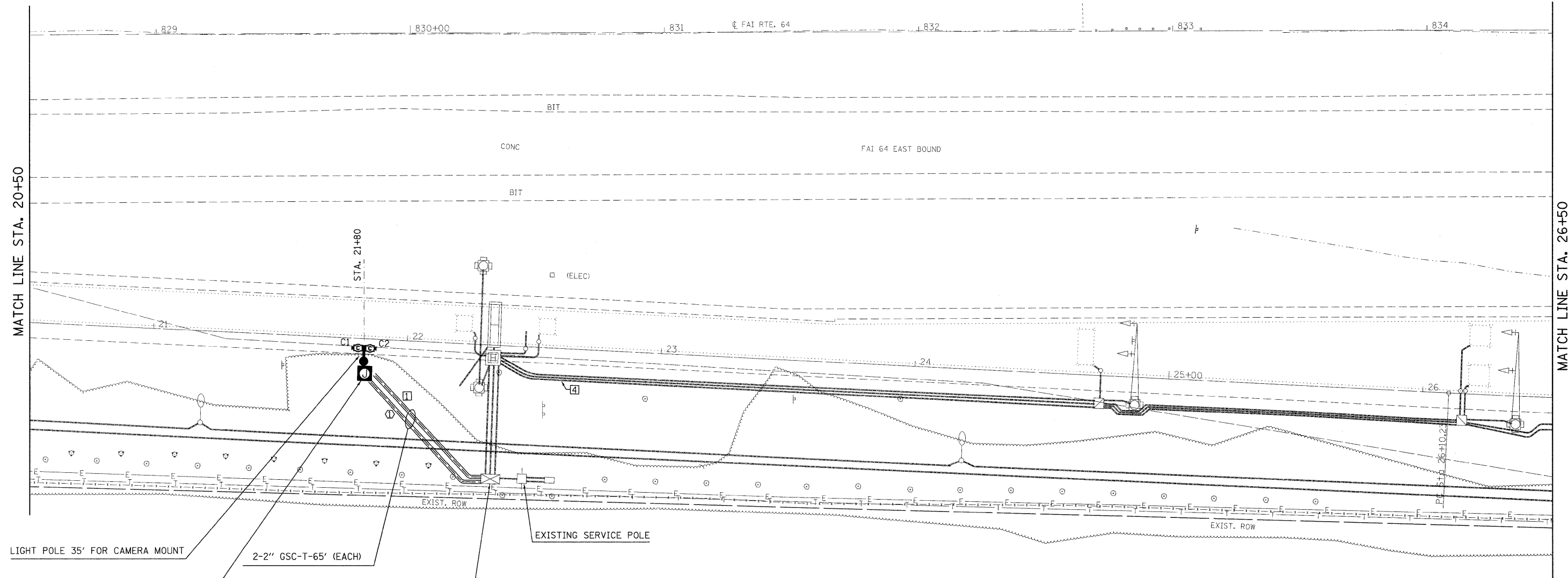
- 1 THE LIGHTED SIGN "CLOSED" SHALL BE TURNED ON DURING THE WEIGH STATION SHUT DOWN AS DIRECTED BY THE ENGINEER.
- 2 ALL EXISTING AND PROPOSED RIGHT-OF-WAY LINES SHOWN ON THE PLAN SHEETS ARE GRAPHICAL REPRESENTATIONS AND SHALL NOT BE USED AS A MEANS OF ESTABLISHED OWNERSHIP IN ALL MATTERS RELATING TO RIGHT-OF-WAY. THE PLAT OF HIGHWAYS SHALL BE THE CONTROLLING DOCUMENT.
- 3 ALL AREAS DISTURBED FOR ANY REASON SHALL BE PERMANENTLY SEEDED AS DIRECTED. THE COST SHALL BE INCLUDED IN PAY ITEM FOR TRENCH AND BACKFILL FOR ELECTRIC WORK.  
  
ALL AREAS DISTURBED BY THE CONTRACTOR OUTSIDE THE PROPOSED CONSTRUCTION SHALL BE SEEDED AT THE CONTRACTOR'S EXPENSE.
- 4 THE LOCATION OF THE LIGHT POLE SHALL BE APPROVED BY THE ENGINEER BEFORE CONSTRUCTING FOUNDATION.
- 5 LOCATIONS SHOWN FOR THE BURIED UTILITIES AND CONDUITS ARE APPROXIMATE.
- 6 ILLINOIS STATE LAW REQUIRES A 48 HOUR NOTICE BE GIVEN TO UTILITIES BEFORE DIGGING. FIELD MARKING OF FACILITIES MAY BE OBTAINED BY CONTACTING J.U.L.I.E. OR FOR NON-MEMBERS, THE UTILITY COMPANY DIRECTLY. AGENCIES KNOWN TO HAVE FACILITIES WITHIN THE PROJECT AREA ARE AS FOLLOWS:
  - \* AMEREN IP (GAS & ELECTRIC)
  - \* AT&T ILLINOIS (COMMUNICATIONS)
  - \* CHARTER COMMUNICATIONS, INC (CABLE TV)
  - \* CITY OF O'FALLON (WATER & SANITARY SEWER)
  - \* VILLAGE OF SHILOH (SANITARY SEWER)

(MEMBERS OF J.U.L.I.E. PHONE (800)-892-0123 ARE INDICATED BY \*)  
NON-J.U.L.I.E. MEMBERS MUST BE NOTIFIED INDIVIDUALLY.
- 7 COORDINATION WITH THE DEPARTMENT'S BUREAU OF OPERATIONS IS REQUIRED BEFORE ANY TRENCHING SHALL BE DONE TO LOCATE HIGHWAY LIGHTING/PUMP STATION/INTELLIGENT TRANSPORTATION SYSTEM FACILITIES AND TO COORDINATE OTHER FIELD ACTIVITIES. THE CONTRACTOR WILL BE RESPONSIBLE FOR LOCATING AND PROTECTING ALL UNDERGROUND IDOT OWNED UTILITIES.
- 8 ALL WORK, AS DIRECTED BY THE ENGINEER, ASSOCIATED WITH HOOKING UP THE VIDEO CAMERA DETECTION SYSTEM WITHIN THE CONFINES OF THE SCALE HOUSE SHALL BE INCLUDED IN THE CONTRACT UNIT PRICE EACH FOR VIDEO CAMERA DETECTION SYSTEM AND NO ADDITIONAL COMPENSATION WILL BE ALLOWED.

**STATE OF ILLINOIS  
DEPARTMENT OF TRANSPORTATION**

**GENERAL NOTES AND LEGEND**

FILE NAME =	USER NAME = petelbm	DESIGNED -	REVISED -	<b>STATE OF ILLINOIS DEPARTMENT OF TRANSPORTATION</b>	<b>GENERAL NOTES AND LEGEND</b>	F.A.I RTE.	SECTION	COUNTY	TOTAL SHEETS	SHEET NO.	
cd:\pw\work\pwidot\petelbm\0167050\0875	06-shr-TS.dgn	DRAWN -	REVISED -			64	82-71-5	ST. CLAIR	7	3	
	PLOT SCALE = 20.0000' / IN.	CHECKED -	REVISED -			CONTRACT NO. 76D56					
	PLOT DATE = 3/16/2010	DATE -	REVISED -			SCALE: 1"=20'	SHEET NO. 1 OF 3 SHEETS	STA.	TO STA.	FED. ROAD DIST. NO.	ILLINOIS FED. AID PROJECT



MATCH LINE STA. 20+50

MATCH LINE STA. 26+50

FIBER OPTIC CAMERA AND POWER JUNCTION BOX, NEMA 4X, POLE MOUNTED

WIM CABINET  
 DRILL EXISTING FOUNDATION-2 EACH  
 INSTALL 15 AMP., 120 VOLTS, 1 POLE CIRCUIT BREAKER  
 SPLICE PROPOSED FIBER OPTIC CABLE INTO THE EXISTING TWO SPARE FIBERS FROM WIM CABINET TO THE SCALE HOUSE.

SIGNAL CONDUITS:

- 1 2" CONDUIT, FO CABLE, 62.5/125, MULTIMODE(CAMERA 1 & CAMERA 2) AND TRACER CABLE, 1/C\*12
- 2 COAXIAL CABLE
- 3 2" CONDUIT, EXISTING FO CABLE, 62.5/125 (WIM CONTROLLER TO SCALE HOUSE)

POWER CONDUITS:

- 1 2" CONDUIT, 1- 2/C\*12 AWG + 1/C \*12 AWG GROUND (POLE MOUNT CAMERA BOX POWER)
- 2 ELECTRIC CABLE IN CONDUIT, 3/C\*16

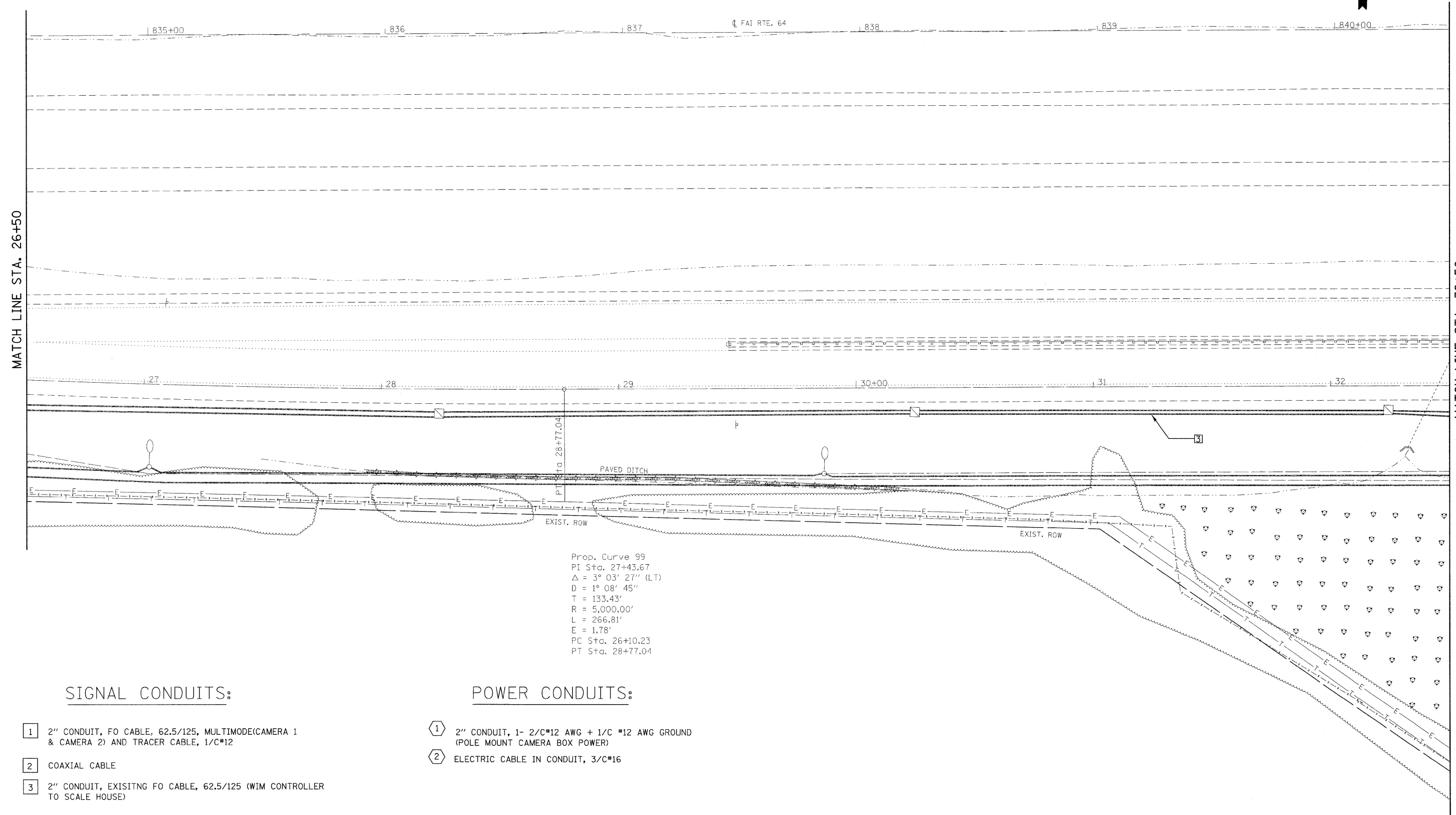
FILE NAME =	USER NAME = patellbm	DESIGNED -	REVISED -
cr\pw\work\PWIDOT\PA TELBM\d0167050\d074	d06-sh1-TS.dgn	DRAWN -	REVISED -
PLOT SCALE = 19.9994' / IN.		CHECKED -	REVISED -
PLOT DATE = 3/16/2010		DATE -	REVISED -

**STATE OF ILLINOIS  
DEPARTMENT OF TRANSPORTATION**

**QUEUE DETECTION CAMERA SYSTEM**

SCALE: 1"=20'    SHEET NO. 1 OF 3 SHEETS    STA.    TO STA.

F.A.T. RTE.	SECTION	COUNTY	TOTAL SHEETS	SHEET NO.
64	82-71-5	ST. CLAIR	7	4
CONTRACT NO. 76D56				
FED. ROAD DIST. NO.		ILLINOIS FED. AID PROJECT		



Prop. Curve 99  
 PI Sta. 27+43.67  
 $\Delta = 3^\circ 03' 27''$  (LT)  
 $D = 1^\circ 08' 45''$   
 $T = 133.43'$   
 $R = 5,000.00'$   
 $L = 266.81'$   
 $E = 1.78'$   
 PC Sta. 26+10.23  
 PT Sta. 28+77.04

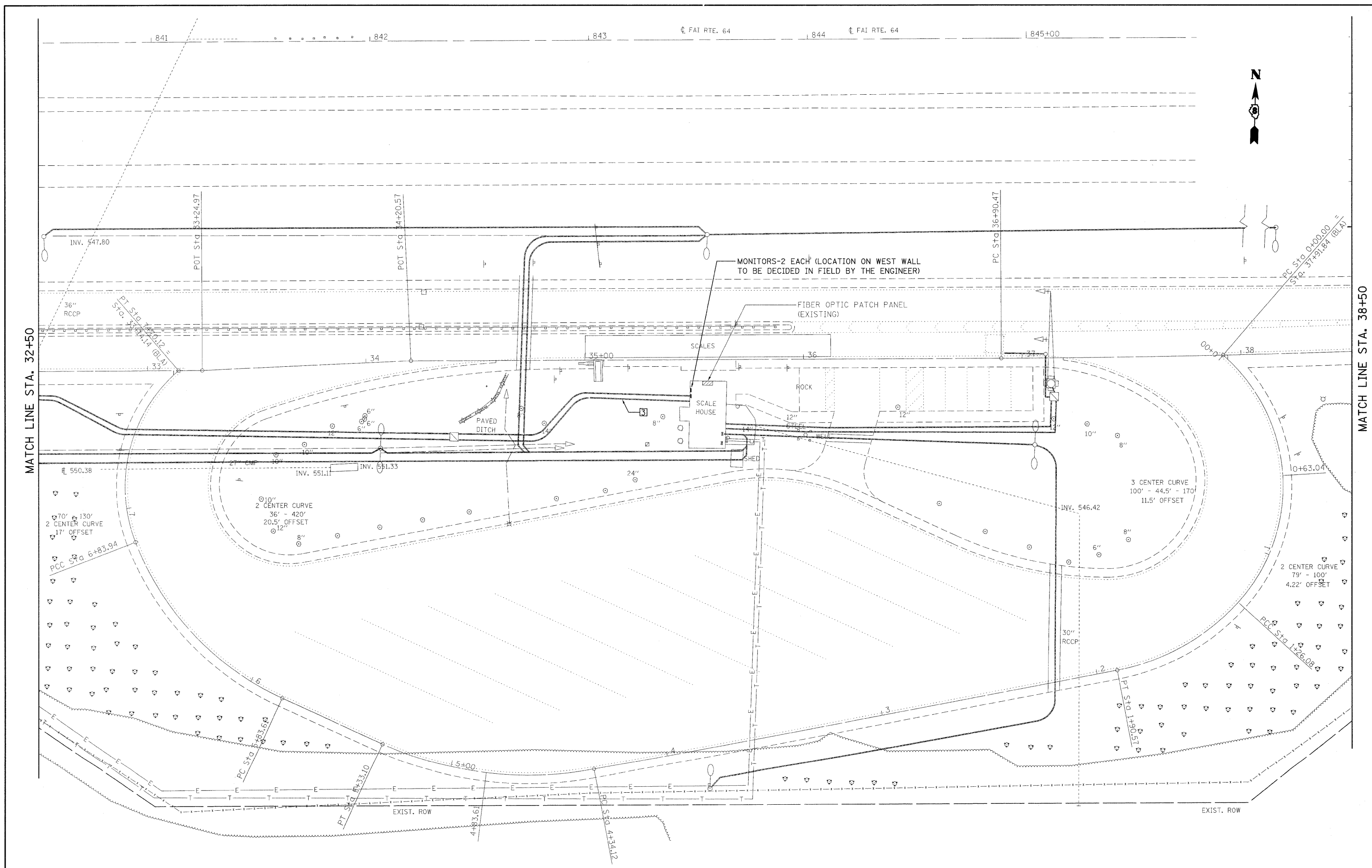
SIGNAL CONDUITS:

- 1 2" CONDUIT, FO CABLE, 62.5/125, MULTIMODE(CAMERA 1 & CAMERA 2) AND TRACER CABLE, 1/C\*12
- 2 COAXIAL CABLE
- 3 2" CONDUIT, EXISTING FO CABLE, 62.5/125 (WIM CONTROLLER TO SCALE HOUSE)

POWER CONDUITS:

- 1 2" CONDUIT, 1- 2/C\*12 AWG + 1/C \*12 AWG GROUND (POLE MOUNT CAMERA BOX POWER)
- 2 ELECTRIC CABLE IN CONDUIT, 3/C\*16

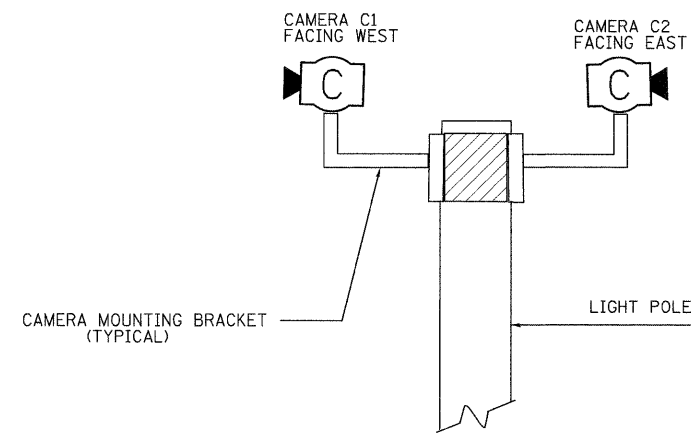
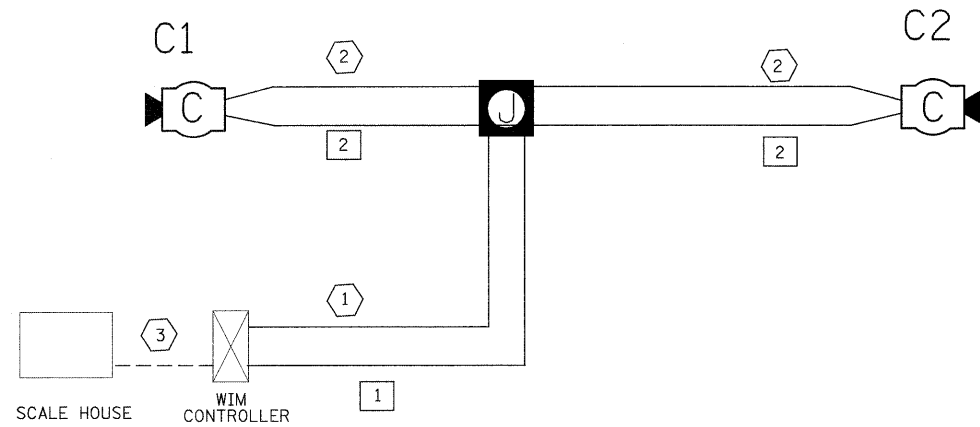
FILE NAME =	USER NAME = pte1bm	DESIGNED -	REVISED -	<b>STATE OF ILLINOIS DEPARTMENT OF TRANSPORTATION</b>	<b>QUEUE DETECTION CAMERA SYSTEM</b>			F.A.I. RTE.	SECTION	COUNTY	TOTAL SHEETS	SHEET NO.
es\pwork\PWIDOT\pATELBM\d0167050\d876	d56-ahs-TS.dgn	DRAWN -	REVISED -		64	82-71-5	ST. CLAIR	7	5			
PLOT SCALE = 20,001' / IN.		CHECKED -	REVISED -		CONTRACT NO. 76D56							
PLOT DATE = 3/16/2010		DATE -	REVISED -		SCALE: 1"=20'	SHEET NO. 2 OF 3 SHEETS	STA.	TO STA.	FED. ROAD DIST. NO.	ILLINOIS FED. AID PROJECT		



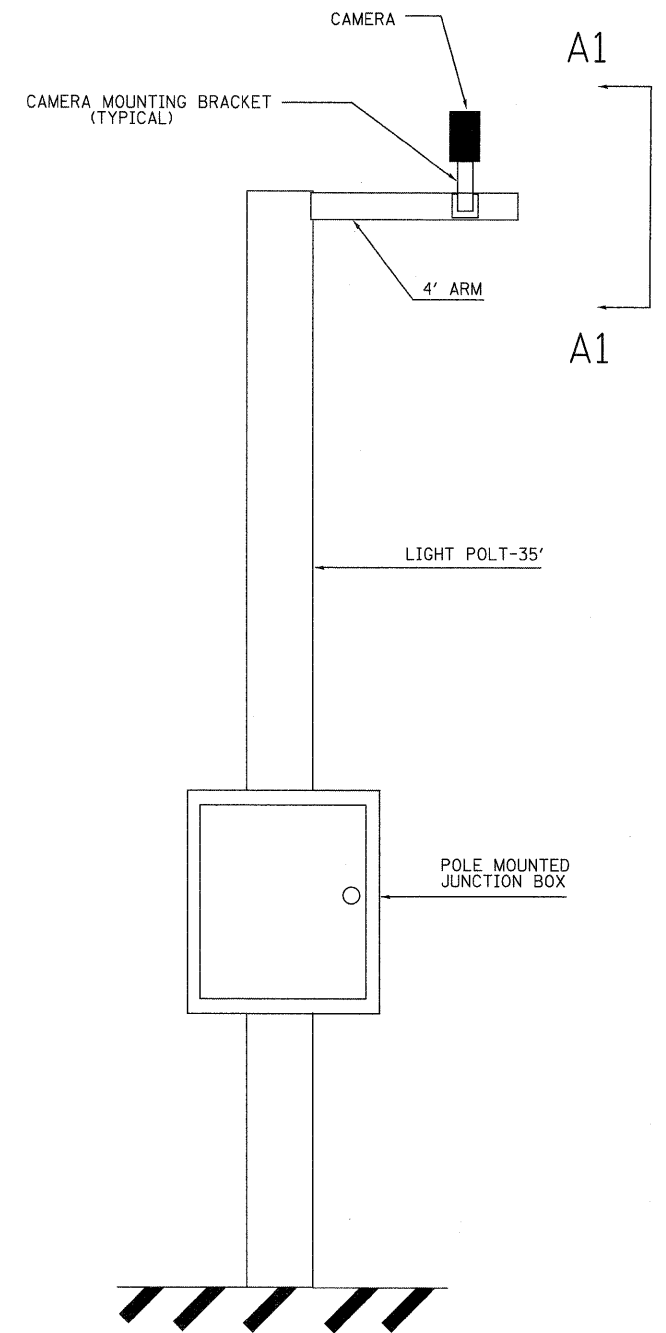
MATCH LINE STA. 32+50

MATCH LINE STA. 38+50

FILE NAME = c:\pw\work\p\WIDOT\p\ATELBM\d0167850\d078	USER NAME = patelebm d56-sh1-TS.dgn	DESIGNED - DRAWN - CHECKED - DATE -	REVISED - REVISED - REVISED - REVISED -	<b>STATE OF ILLINOIS</b> <b>DEPARTMENT OF TRANSPORTATION</b>	<b>QUEUE DETECTION CAMERA SYSTEM</b>	F.A.I. RTE. 64	SECTION 82-71-5	COUNTY ST. CLAIR	TOTAL SHEETS 7	SHEET NO. 6
	PLOT SCALE = 20,000 / / IN. PLOT DATE = 3/16/2010	DATE -	SCALE: 1"=20'			SHEET NO. 3 OF 3 SHEETS	STA. TO STA.	FED. ROAD DIST. NO. ILLINOIS FED. AID PROJECT	CONTRACT NO. 76D56	



SECTION A1-A1



LIGHT POLE MOUNTED CAMERA

SIGNAL CONDUITS:

- 1 2" CONDUIT, FO CABLE, 62.5/125, MULTIMODE(CAMERA 1 & CAMERA 2) AND TRACER CABLE, 1/C\*12
- 2 COAXIAL CABLE
- 3 2" CONDUIT, EXISITNG FO CABLE, 62.5/125 (WIM CONTROLLER TO SCALE HOUSE)

POWER CONDUITS:

- 1 2" CONDUIT, 1- 2/C\*12 AWG + 1/C \*12 AWG GROUND (POLE MOUNT CAMERA BOX POWER)
- 2 ELECTRIC CABLE IN CONDUIT, 3/C\*16

FILE NAME =	USER NAME = patelebm	DESIGNED -	REVISED -
64\pwwork\pwidot\patelebm\d0167050\d07456-shr-TS.dgn		DRAWN -	REVISED -
PLOT SCALE = 20.0031' / IN.		CHECKED -	REVISED -
PLOT DATE = 3/16/2010		DATE -	REVISED -

STATE OF ILLINOIS  
DEPARTMENT OF TRANSPORTATION

WIRING DIAGRAM AND DETAILS

SCALE: NONE SHEET NO. OF SHEETS STA. TO STA.

F.A.I. RTE.	SECTION	COUNTY	TOTAL SHEETS	SHEET NO.
64	82-7I-5	ST. CLAIR	7	7
CONTRACT NO. 76D56				
FED. ROAD DIST. NO. ILLINOIS FED. AID PROJECT				