

STATE OF ILLINOIS
DEPARTMENT OF TRANSPORTATION
DIVISION OF HIGHWAYS

**PROPOSED
HIGHWAY PLANS**

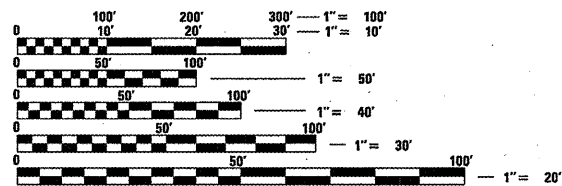
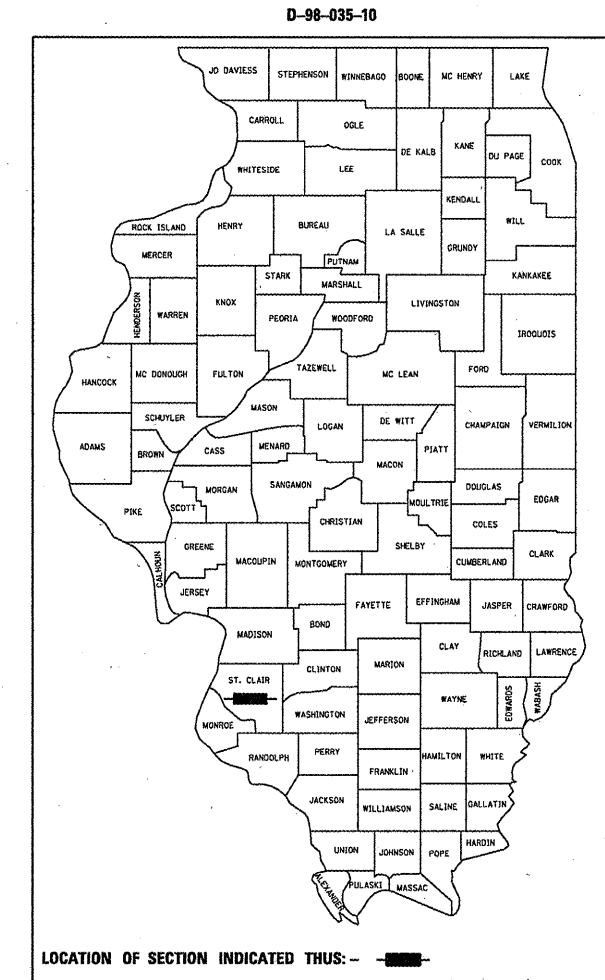
FAS ROUTE 840 (DOUGLASMILLSTADT RD.)
SECTION 233RS

IL 158 TO FLORAVILLE RD.
RESURFACING
ST. CLAIR COUNTY

C-98-048-10

F.A.S. RTE.	SECTION	COUNTY	TOTAL SHEETS	SHEET NO.
840	233RS	ST. CLAIR	31	1
FED. ROAD DIST. NO.	ILLINOIS	CONTRACT NO. 76D67		

FOR INDEX OF SHEETS, SEE SHEET NO. 2



FULL SIZE PLANS HAVE BEEN PREPARED USING STANDARD ENGINEERING SCALES. REDUCED SIZED PLANS WILL NOT CONFORM TO STANDARD SCALES. IN MAKING MEASUREMENTS ON REDUCED PLANS, THE ABOVE SCALES MAY BE USED.

J.U.L.I.E.
JOINT UTILITY LOCATION INFORMATION FOR EXCAVATION
1-800-892-0123
OR 811

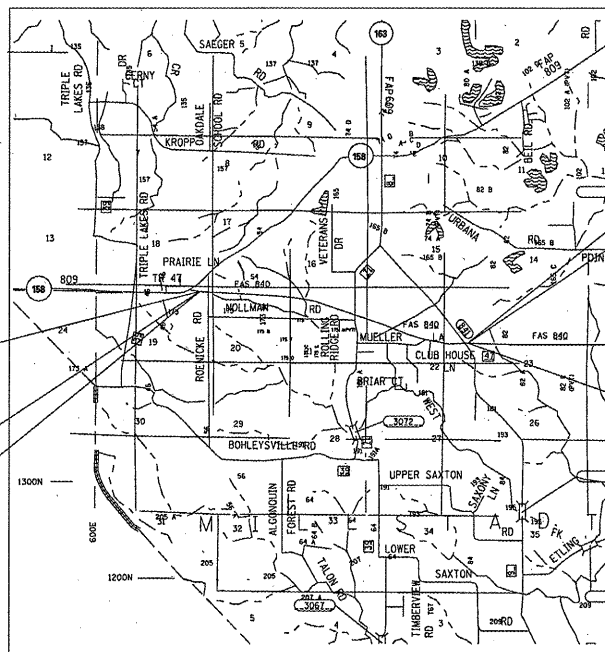
PROJECT ENGINEER: LUCAS DICKS (618)346-3194
PROJECT MANAGER: TIM PADGETT (618)346-3325

CONTRACT NO. 76D67

BEGIN SECTION
STA. 114 + 12
38.440766297971614
-90.12546300888061

2010 ADT - 3400
SU = 4.7%
MU = 4.4%

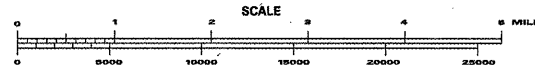
FUNCTIONAL CLASS = MAJOR COLLECTOR NON URBAN



2010 ADT - 3250
SU = 4.5%
MU = 4.0%

END SECTION
STA. 267 + 74
38.43288350196883
-90.07396459579468

GROSS LENGTH = 2.9 MILES
NET LENGTH = 2.9 MILES



STATE OF ILLINOIS
DEPARTMENT OF TRANSPORTATION
DIVISION OF HIGHWAYS

SUBMITTED March 16 20 10
Mary C Jamie
DEPUTY DIRECTOR OF HIGHWAYS, REGION ENGINEER

May 7 20 10
Scott E. Stitt P.E.
ENGINEER OF DESIGN AND ENVIRONMENT

May 7 20 10
Christine M. Reade
DIRECTOR OF HIGHWAYS, CHIEF ENGINEER

PRINTED BY THE AUTHORITY
OF THE STATE OF ILLINOIS

STANDARDS

000001-05
 001001-02
 001006
 406201-01
 442101-07
 482011-03
 542301-02
 606006-02
 630001-08
 635006-03
 635011-02
 701001-02
 701006-03
 701011-02
 701201-03
 701301-03
 701306-02
 701326-03
 701336-05
 701901-01
 780001-02
 781001-03

INDEX OF SHEETS

1. COVER SHEET
2. INDEX OF SHEETS AND STANDARDS
3. GENENERAL NOTES AND COMMITMENTS
4. SUMMARY OF QUANTITIES
- 5.-6. TYPICAL SECTIONS
7. LOCATION MAP
- 8.-14. SCHEDULE OF QUANTITIES
15. PAVEMENT MARKING DETAIL
16. GUTTER DETAIL
- 17.-19. MISCELLANEOUS DETAILS
- 20.-23. PIPE EXTENSION DETAILS
- 24.-31. GUARDRAIL DETAILS

FILE NAME = #FILE#	USER NAME = #USER#	DESIGNED - ---	REVISED - ---	STATE OF ILLINOIS DEPARTMENT OF TRANSPORTATION	INDEX OF SHEETS AND STANDARDS	F.A.S. RTE. 840	SECTION 233RS	COUNTY ST. CLAIR	TOTAL SHEETS 31	SHEET NO. 2	
	DRAWN - ---	REVISED - ---									
	PLOT SCALE = #SCALE#	CHECKED - ---	REVISED - ---								
	PLOT DATE = #DATE#	DATE - ---	REVISED - ---								
						SCALE: _____ SHEET NO. ___ OF ___ SHEETS		STA. _____ TO STA. _____		FED. ROAD DIST. NO. - ILLINOIS FED. AID PROJECT	

GENERAL NOTES

1. THE THICKNESS OF THE BITUMINOUS MIXTURE SHOWN ON THE PLANS IS THE NOMINAL THICKNESS. DEVIATIONS FROM THE NOMINAL THICKNESS WILL BE PERMITTED WHEN SUCH DEVIATIONS OCCUR DUE TO IRREGULARITIES IN THE EXISTING SURFACE OR BASE ON WHICH THE BITUMINOUS MIXTURE IS PLACED.
2. ILLINOIS STATE LAW REQUIRES A 48-HOUR NOTICE BE GIVEN TO ALL UTILITIES BEFORE DIGGING. FIELD MARKING OF FACILITIES MAY BE OBTAINED BY CONTACTING J.U.L.I.E. OR FOR NON-MEMBERS, THE UTILITY COMPANY DIRECTLY. AGENCIES KNOWN TO HAVE FACILITIES WITHIN THE PROJECT AREA ARE AS FOLLOWS:

UTILITY	ABOVE GROUND	BELOW GROUND
* AMERENIP (ELECTRIC)	X	X
* AMERENIP (GAS)		X
* CHARTER COMMUNICATIONS, INC.	X	X
* ILLINOIS AMERICAN WATER COMPANY		X
* VILLAGE OF MILLSTADT (WATER & SANITARY SEWER)		X
* MONROE COUNTY ELECTRIC CO-OPERATIVE, INC.	X	X
* VERIZON NORTH, INC.	X	X

MEMBERS OF J.U.L.I.E. (800)-892-0123 ARE INDICATED BY *. NON J.U.L.I.E. MEMBERS MUST BE NOTIFIED INDIVIDUALLY.

3. THE FOLLOWING MIXTURE REQUIREMENTS ARE APPLICABLE FOR THIS PROJECT.

MIXTURE USE	SURFACE	LEVEL BINDER	Partial Depth Patch	SHOULDERS
AC/PG	PG 64-22	PG 64-22	PG 64-22	PG 64-22
RAP % (MAX)	SEE SPEC.	SEE SPEC.	SEE SPEC.	See Contract RAP Special
DESIGN AIR VOIDS	4.0% @ Ndes=70	4.0% @ Ndes=70	4.0% @ Ndes=70	2.0% @ Ndes=30
MIX COMPOSITION				
GRADATION MIXTURE	IL 12.5/9.5	IL 9.5		
FRICITION AGG	MIXTURE "C"	MIXTURE "C"	MIXTURE "C"	BAM

** Top Lift Shoulders - Design this mix at 2.0% voids and add asphalt to reduce voids to 1.5%.

Plan quantities for Bituminous Concrete Surface Course Items are calculated using a unit weight of 112 lb/sq yd/in (59.8 kg/sq m/25 mm thickness).

4. ALL TEMPORARY PAVEMENT MARKINGS WILL BE PLACED IN SUCH A MANNER SO AS NOT TO INTERFERE WITH THE PLACEMENT OF PERMANENT PAVEMENT MARKINGS.
5. HIGH EARLY STRENGTH CONCRETE MIX SHALL BE USED FOR ALL PCC PATCHING.
6. THE CONTRACTOR SHALL BE AWARE THAT THERE ARE MANHOLES & VALVES LOCATED WITHIN THE RESURFACING LIMITS. CARE SHALL BE TAKEN IN THESE LOCATIONS DURING MILLING OPERATIONS.
7. THE CONTRACTOR SHALL VERIFY ALL DIMENSIONS AND CONDITIONS IN THE FIELD PRIOR TO CONSTRUCTION AND ORDERING OF MATERIALS.
8. ALL EARTH EXCAVATION FOR 1 FT SAFETY SHOULDER SHALL BE INCLUDED IN PAY ITEM 40600635 (LEVELING BINDER (MACHINE METHOD), N70).
9. ALL EARTH EXCAVATION FOR GUTTER PLACEMENT SHALL BE INCLUDED IN PAY ITEM 60600095 (CLASS SI CONCRETE (OUTLET)).
10. ALL EARTH EXCAVATION AND EMBANKMENT TO COMPLETE THE PIPE EXTENSIONS SHALL BE INCLUDED IN THE PAY ITEMS 54214521 (P.R.C.F.E.S. 36") AND ITEM 54214515 (P.R.C.F.E.S. 30").
11. THE EXISTING GUTTER DRAIN AT STA. 264+14.6 SHALL BE FILLED WITH CONTROLLED LOW-STRENGTH MATERIAL.
12. EXTRA LEVELING (15 TONS) BINDER FROM STATION 169+36 TO STATION 169+76 TO ACCOUNT FOR A DIP IN DOUGLAS/MILLSTADT RD.

13. ALL AGGREGATE PRIVATE ENTRANCES AND AGGREGATE SIDEROADS SHALL HAVE A 3 FT LONG AGGREGATE SURFACE COURSE, TYPE A WEDGE PLACED TO TRANSITION TO THE LEVEL OF THE HMA SURFACE COURSE, MIX "C", N70.
14. SHORT-TERM PAVEMENT MARKING SHALL BE APPLIED TO THE PRIMED, LEVELING BINDER AND FINAL HMA SURFACE. A QUANTITY FOR TEMPORARY PAVEMENT MARKING EQUAL TO THE AMOUNT OF PERMANENT PAVEMENT MARKINGS HAS BEEN ADDED TO THE PLANS. ONLY REMOVAL FROM THE FINAL SURFACE IS PAID AS WORK ZONE PAVEMENT MARKING REMOVAL.
15. THE RATES OF APPLICATION SHOWN IN THE PLANS ARE NOMINAL. DEVIATIONS WILL BE ALLOWED AS SPECIFIED BY THE ENGINEER IN ACCORDANCE WITH THE STANDARD SPECIFICATION.
16. ALL AREAS DISTURBED FOR ANY REASON SHALL BE PERMANENTLY SEEDED AS DIRECTED BY THE ENGINEER. ALL AREAS DISTURBED BY THE CONTRACTOR OUTSIDE THE PROPOSED CONSTRUCTION LIMITS SHALL BE SEEDED AT THE CONTRACTORS EXPENSE.
17. THE CONTRACTOR AND THE ENGINEER SHALL BE AWARE THAT NO SURVEY WAS PERFORMED FOR THIS PROJECT. THE STATIONING AND TOPO SHOWN ON PLANS WERE CREATED USING MICROFILM AND FIELD MEASUREMENTS MADE BY DESIGN PERSONEL. BOTH SHALL BE ASSUMED TO BE APPROXIMATE.

TRAFFIC CONTROL

1. NO OVERNIGHT LANE CLOSURES WILL BE ALLOWED. THE ROADWAY SHALL REMAIN OPEN TO TRAFFIC DURING CONSTRUCTION.
2. ALL EXCAVATION ADJACENT TO THE EDGE OF PAVEMENT SHALL BE PROTECTED WITH EXTENDED LEG BARRICADES AND APPROPRIATE LIGHTS.
3. ROAD CONSTRUCTION AHEAD SIGNS SHALL BE PLACED AT THE BEGINNING AND END OF THE PROJECT PLUS THE INTERSECTING SIDE ROADS, AND WILL BE INCLUDED IN THE TRAFFIC CONTROL PAY ITEMS. ALL CONSTRUCTION SIGNS SHALL BE FLUORESCENT ORANGE.
4. FLAGMEN SHALL BE PRESENT DURING ALL CLOSURE HOURS, INCLUDING LUNCH HOUR, AND NO ADDITIONAL COMPENSATION SHALL BE APPLIED.

COMMITMENTS

NONE

FILE NAME #	USER NAME # #USER#	DESIGNED - ---	REVISED - ---	STATE OF ILLINOIS DEPARTMENT OF TRANSPORTATION	GENERAL NOTES	F.A.S. RTE.	SECTION	COUNTY	TOTAL SHEETS	SHEET NO.	
#FILE#		DRAWN - ---	REVISED - ---			840	233RS	ST. CLAIR	31	3	
	PLOT SCALE # #SCALE#	CHECKED - ---	REVISED - ---			CONTRACT NO. 76067					
	PLOT DATE # #DATE#	DATE - ---	REVISED - ---			SCALE: _____ SHEET NO. ___ OF ___ SHEETS STA. _____ TO STA. _____ FED. ROAD DIST. NO. ___ ILLINOIS FED. AID PROJECT					

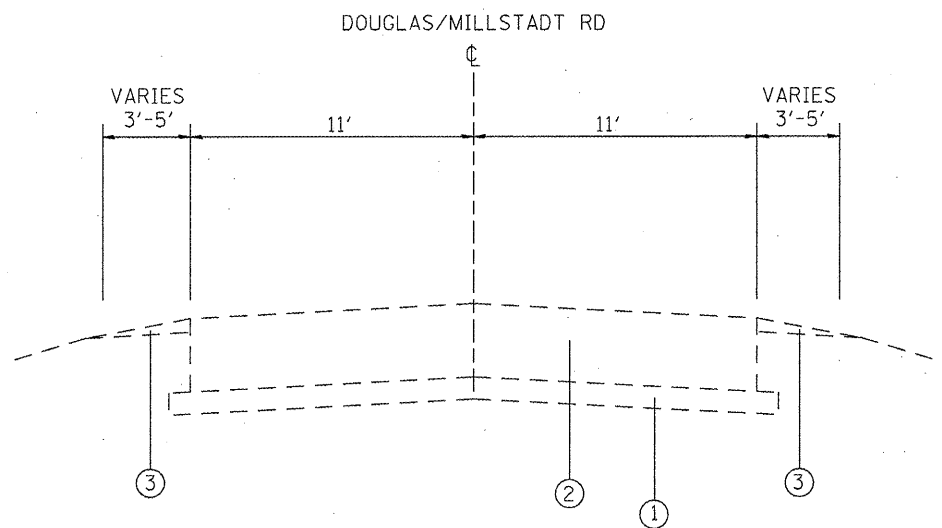
SUMMARY OF QUANTITIES

SUMMARY OF QUANTITIES			CONSTRUCTION TYPE CODE			SUMMARY OF QUANTITIES			CONSTRUCTION TYPE CODE		
CODE NO	ITEM	UNIT	TOTAL QUANTITIES	100% STATE 1000	100% ST. CLAIR CO. 1000	CODE NO	ITEM	UNIT	TOTAL QUANTITIES	100% STATE 1000	100% ST. CLAIR CO. 1000
25000200	SEEDING, CLASS 2	ACRE	0.25	0.25		* 63000003	STEEL PLATE BEAM GUARD RAIL, TYPE A, 9 FOOT POSTS	FOOT	762.5	762.5	
25000400	NITROGEN FERTILIZER NUTRIENT	POUND	7.2	7.2		* 63100167	TRAFFIC BARRIER TERMINAL, TYPE 1 (SPECIAL) TANGENT	EACH	22	22	
25000500	PHOSPHORUS FERTILIZER NUTRIENT	POUND	7.2	7.2		63200310	GUARDRAIL REMOVAL	FOOT	3500	3500	
25000600	POTASSIUM FERTILIZER NUTRIENT	POUND	7.2	7.2		67000400	ENGINEER'S FIELD OFFICE, TYPE A	CAL MO	5	5	
25100115	MULCH, METHOD 2	ACRE	0.25	0.25		67100100	MOBILIZATION	L SUM	1	1	
28100207	STONE RIPRAP, CLASS A4	TON	12	12		70100450	TRAFFIC CONTROL AND PROTECTION, STANDARD 701201	L SUM	1	1	
28200200	FILTER FABRIC	SQ YD	23	23		70100460	TRAFFIC CONTROL AND PROTECTION, STANDARD 701306	L SUM	1	1	
40200100	AGGREGATE SURFACE COURSE, TYPE A	TON	51	51		70100500	TRAFFIC CONTROL AND PROTECTION, STANDARD 701326	L SUM	1	1	
40600200	BITUMINOUS MATERIALS (PRIME COAT)	TON	13.7	12.9	0.8	70100600	TRAFFIC CONTROL AND PROTECTION, STANDARD 701336	L SUM	1	1	
40600300	AGGREGATE (PRIME COAT)	TON	64	62	2	70103815	TRAFFIC CONTROL SURVEILLANCE	CAL DA	10	10	
40600635	LEVELING BINDER (MACHINE METHOD), N70	TON	3022	2932	90	70300100	SHORT-TERM PAVEMENT MARKING	FOOT	5126	4402	724
40600982	HOT-MIX ASPHALT SURFACE REMOVAL - BUTT JOINT	SQ YD	736	589	147	70300220	TEMPORARY PAVEMENT MARKING - LINE 4"	FOOT	41130	39806	1324
40600985	PORTLAND CEMENT CONCRETE SURFACE REMOVAL - BUTT JOINT	SQ YD	74	74		70300280	TEMPORARY PAVEMENT MARKING - LINE 24"	FOOT	92	22	70
40600990	TEMPORARY RAMP	SQ YD	273	248	25	70301000	WORK ZONE PAVEMENT MARKING REMOVAL	SQ FT	570	489	81
40603315	HOT-MIX ASPHALT SURFACE COURSE, MIX "C", N70	TON	3588	3453	135	* 78000200	THERMOPLASTIC PAVEMENT MARKING - LINE 4"	FOOT	41130	39806	1324
40800020	BITUMINOUS MATERIALS (PRIME COAT)	TON	0.4	0.4		* 78000650	THERMOPLASTIC PAVEMENT MARKING - LINE 24"	FOOT	92	22	70
40800050	INCIDENTAL HOT-MIX ASPHALT SURFACING	TON	84	84		* 78100100	RAISED REFLECTIVE PAVEMENT MARKER	EACH	186	186	
44000400	GUTTER REMOVAL	FOOT	33	33		* 78200300	PRISMATIC CURB REFLECTOR	EACH	22		22
44200956	CLASS B PATCHES, TYPE II, 9 INCH	SQ YD	416	416		* 78200410	GUARDRAIL MARKERS, TYPE A	EACH	30	30	
44213200	SAW CUTS	FOOT	2009	2009		78201000	TERMINAL MARKER - DIRECT APPLIED	EACH	22	22	
48102100	AGGREGATE WEDGE SHOULDER, TYPE B	TON	1141	1125	16	78300200	RAISED REFLECTIVE PAVEMENT MARKER REMOVAL	EACH	186	186	
48203100	HOT-MIX ASPHALT SHOULDERS	TON	103	59	44	X4421000	PARTIAL DEPTH PATCHING	TON	22	22	
50102400	CONCRETE REMOVAL	CU YD	19.1	19.1		X4422025	PARTIAL DEPTH REMOVAL 2"	SQ YD	195	195	
50800105	REINFORCEMENT BARS	POUND	180	180		* X7800200	PAINT PAVEMENT MARKING CURB	FOOT	60		60
54002020	EXPANSION BOLTS 3/4 INCH	EACH	40	40		Z0017202	DOWEL BARS 1 1/2"	EACH	805	805	
54214515	PRECAST REINFORCED CONCRETE FLARED END SECTIONS, EQUIVALENT ROUND-SIZE 30"	EACH	3	3							
54214521	PRECAST REINFORCED CONCRETE FLARED END SECTIONS, EQUIVALENT ROUND-SIZE 36"	EACH	2	2							
54248510	CONCRETE COLLAR	CU YD	3.1	3.1							
59300100	CONTROLLED LOW-STRENGTH MATERIAL	CU YD	0.5	0.5							
60500060	REMOVING INLETS	EACH	1	1							
60600095	CLASS SI CONCRETE (OUTLET)	CU YD	2.4	2.4							
*63000001	STEEL PLATE BEAM GUARD RAIL, TYPE A, 6 FOOT POSTS	FOOT	1362.5	1362.5							

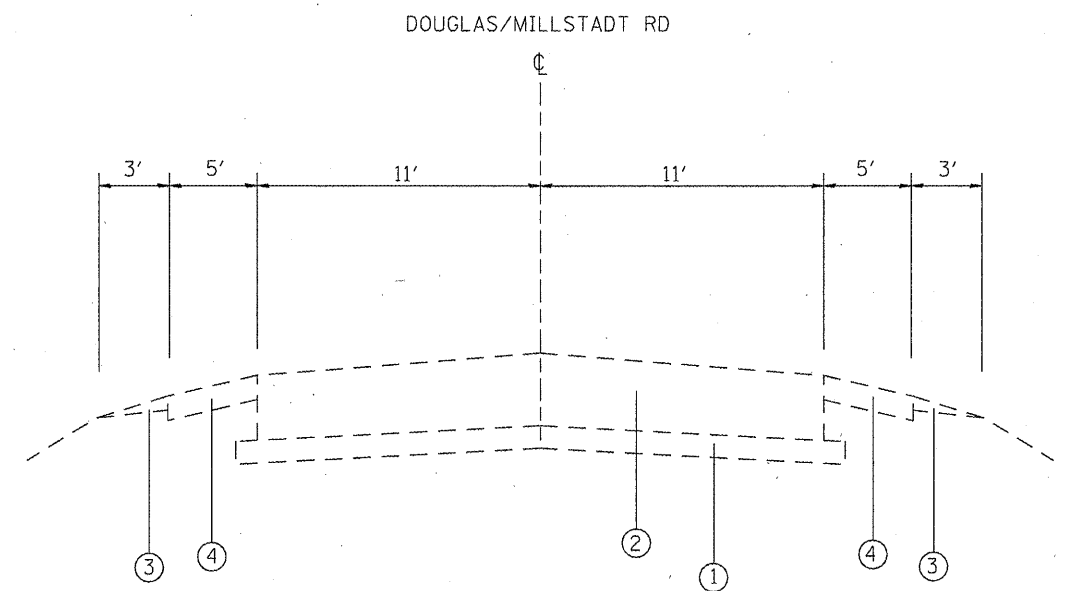
** Specialty Items*

FILE NAME =	USER NAME = #USER#	DESIGNED - ---	REVISED - ---	STATE OF ILLINOIS DEPARTMENT OF TRANSPORTATION	SUMMARY OF QUANTITIES	F.A.S. RTE.	SECTION	COUNTY	TOTAL SHEETS	SHEET NO.	
#FILEL#		DRAWN - ---	REVISED - ---			840	233RS	ST. CLAIR	31	4	
	PLOT SCALE = #SCALE#	CHECKED - ---	REVISED - ---			SCALE: _____		SHEET NO. ___ OF ___ SHEETS		STA. _____ TO STA. _____	
	PLOT DATE = #DATE#	DATE - ---	REVISED - ---			FED. ROAD DIST. NO. - [ILLINOIS] FED. AID PROJECT					

TOTAL SHEETS	SHEET NO.
31	4
CONTRACT NO. 76067	



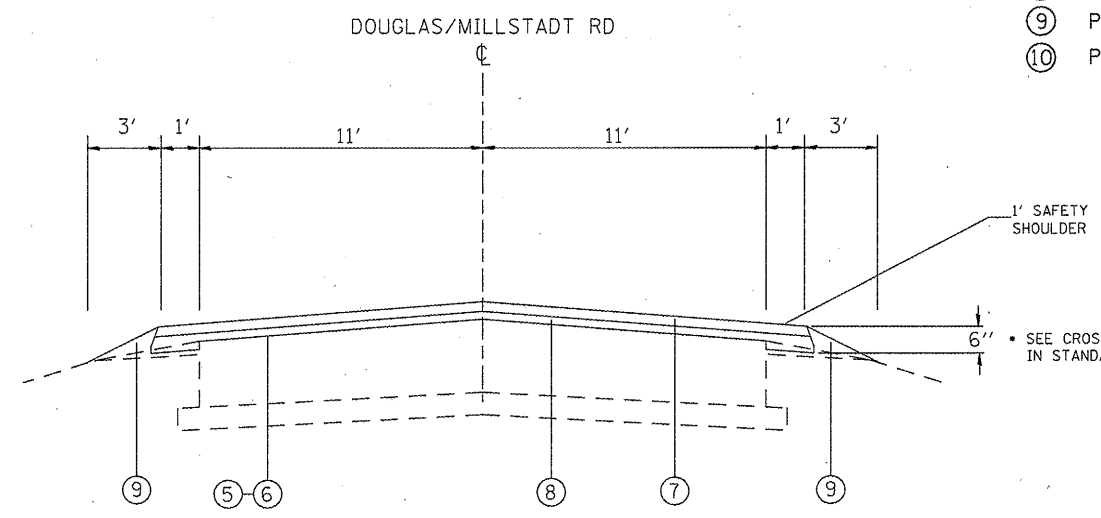
EXISTING TYPICAL SECTION
 FAS 840 (DOUGLAS/MILLSTADT RD)
 STA. 113+62 TO 261+96



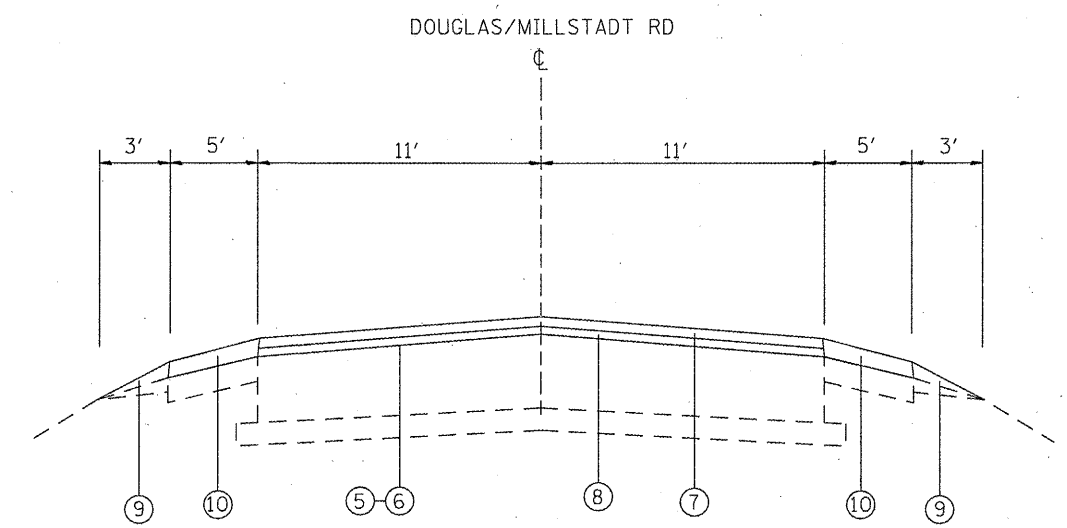
EXISTING TYPICAL SECTION
 FAS 840 (DOUGLAS/MILLSTADT RD)
 STA. 264+07.2 TO 267+74

LEGEND

- ① EXISTING SUB-BASE GRANULAR MATERIAL, TYPE A
- ② EXISTING P.C.C. PAVEMENT, 9"
- ③ EXISTING AGGREGATE SHOULDERS
- ④ EXISTING HMA SHOULDERS
- ⑤ PROPOSED BITUMINOUS (PRIME COAT)
- ⑥ PROPOSED AGGREGATE (PRIME COAT)
- ⑦ PROPOSED HOT-MIX ASPHALT SURFACE COURSE, MIX C, N70 1 1/2"
- ⑧ PROPOSED LEVELING BINDER (MACHINE METHOD) 1"
- ⑨ PROPOSED AGGREGATE WEDGE, TYPE B
- ⑩ PROPOSED HMA SHOULDERS (TONS)



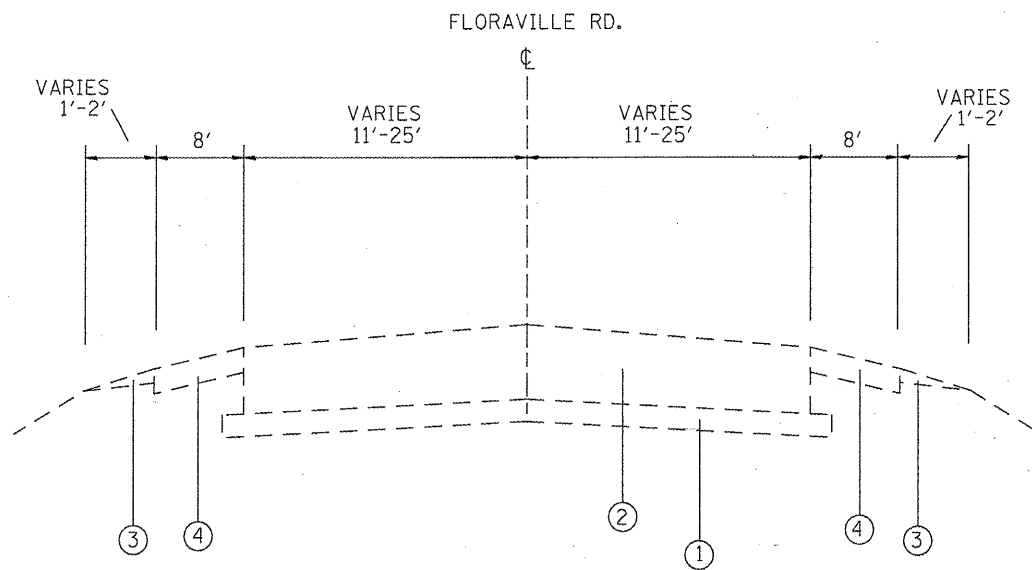
PROPOSED TYPICAL SECTION
 FAS 840 (DOUGLAS/MILLSTADT RD)
 STA. 113+62 TO 261+96



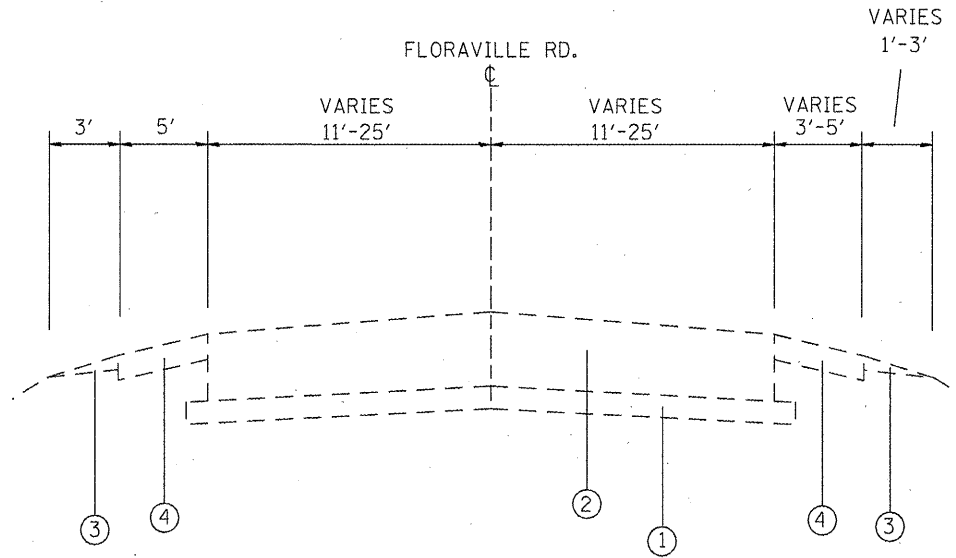
PROPOSED TYPICAL SECTION
 FAS 840 (DOUGLAS/MILLSTADT RD)
 STA. 264+07.2 TO 267+74

* NOTE: ROADWAY WILL BE STRIPED AT 11' LANES

FILE NAME =	USER NAME = #USER#	DESIGNED -	REVISED -	STATE OF ILLINOIS DEPARTMENT OF TRANSPORTATION	TYPICAL SECTIONS	F.A.S. RTE. 840	SECTION 233RS	COUNTY ST. CLAIR	TOTAL SHEETS 31	SHEET NO. 5	
#FILE#	PLOT SCALE = #SCALE#	DRAWN -	REVISED -			SCALE: _____	SHEET NO. _____ OF _____ SHEETS	STA. _____ TO STA. _____	FED. ROAD DIST. NO. _____	ILLINOIS FED. AID PROJECT	
	PLOT DATE = #DATE#	CHECKED -	REVISED -								
		DATE -	REVISED -								



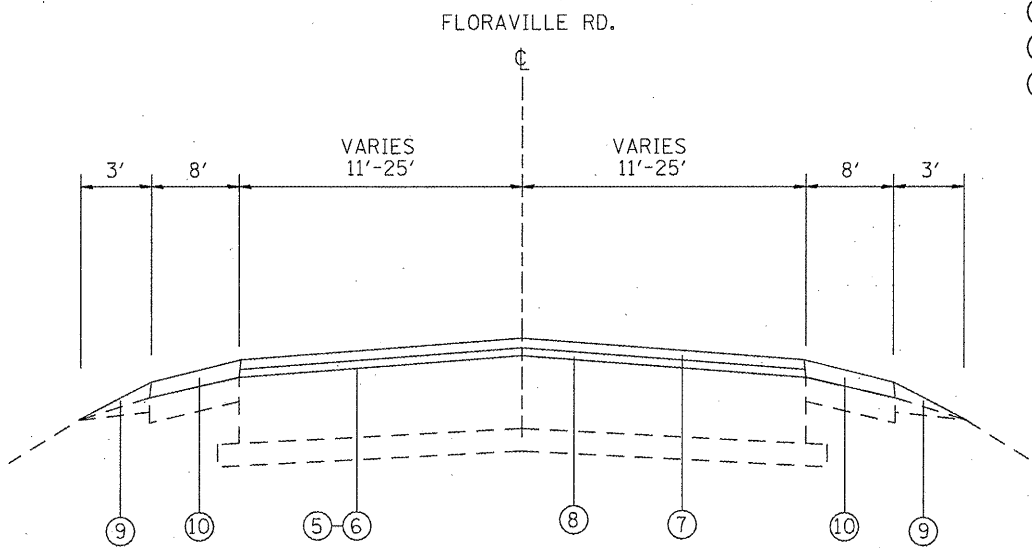
EXISTING TYPICAL SECTION
SOUTH FLORAVILLE RD.
STA. 0+00 TO 2+07



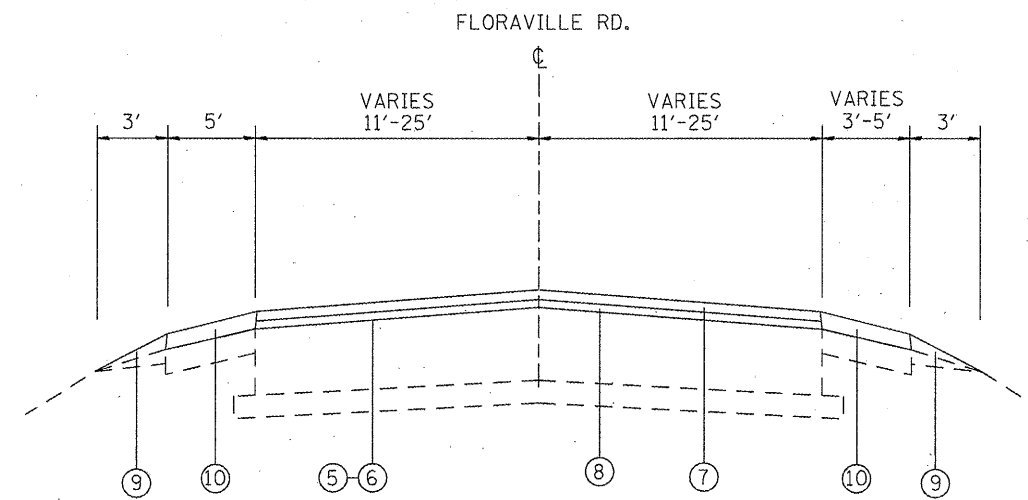
EXISTING TYPICAL SECTION
NORTH FLORAVILLE RD.
STA. 2+29 TO 4+26

LEGEND

- ① EXISTING SUB-BASE GRANULAR MATERIAL, TYPE A
- ② EXISTING P.C.C. PAVEMENT, 9"
- ③ EXISTING AGGREGATE SHOULDERS
- ④ EXISTING HMA SHOULDERS
- ⑤ PROPOSED BITUMINOUS (PRIME COAT)
- ⑥ PROPOSED AGGREGATE (PRIME COAT)
- ⑦ PROPOSED HOT-MIX ASPHALT SURFACE COURSE, MIX C, N70 1 1/2"
- ⑧ PROPOSED LEVELING BINDER (MACHINE METHOD) 1"
- ⑨ PROPOSED AGGREGATE WEDGE, TYPE B
- ⑩ PROPOSED HMA SHOULDERS (TONS)



PROPOSED TYPICAL SECTION
SOUTH FLORAVILLE RD. LEG
STA. 0+00 TO 2+07



PROPOSED TYPICAL SECTION
NORTH FLORAVILLE RD.
STA. 2+29 TO 4+26

FILE NAME =	USER NAME = #USER*	DESIGNED - ---	REVISED - ---
#FILE#		DRAWN - ---	REVISED - ---
	PLOT SCALE = #SCALE*	CHECKED - ---	REVISED - ---
	PLOT DATE = #DATE*	DATE - -----	REVISED - ---

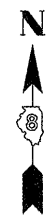
**STATE OF ILLINOIS
DEPARTMENT OF TRANSPORTATION**

TYPICAL SECTIONS

SCALE: _____ SHEET NO. ___ OF ___ SHEETS STA. _____ TO STA. _____

F.A.S. RTE.	SECTION	COUNTY	TOTAL SHEETS	SHEET NO.
840	233RS	ST. CLAIR	31	6
CONTRACT NO. 76D67				
FED. ROAD DIST. NO. - ILLINOIS FED. AID PROJECT				

**BEGIN PROJECT
STA. 113 + 62**



IL 158

ROENICKE RD
STA. 116+76

SAXTOWN RD
STA. 198+60

SAPPINGTON CT.
STA. 203+88

MUELLER LN
STA. 239+25.6

CLUBHOUSE LN
STA. 242+42.4

FLORAVILLE RD
STA. 263+01.6

**IMPROVEMENTS TO BE COMPLETED
BY ANOTHER PROJECT**

**END PROJECT
STA. 267 + 74**

NOT TO SCALE

FILE NAME =	USER NAME = #USER#	DESIGNED -	REVISED -	STATE OF ILLINOIS DEPARTMENT OF TRANSPORTATION	LOCATION MAP		F.A.S. RTE.	SECTION	COUNTY	TOTAL SHEETS	SHEET NO.	
#FILE#		DRAWN -	REVISED -		SCALE: _____	SHEET NO. ___ OF ___ SHEETS	STA. _____ TO STA. _____	840	233RS	ST. CLAIR	31	7
		CHECKED -	REVISED -								CONTRACT NO. 76D67	
		DATE -	REVISED -								ILLINOIS FED. AID PROJECT	

DRIVEWAY ENTRANCE SCHEDULE							
STATION		EXISTING MATERIAL	WIDTH (FT)	AGG. SURF. CSE., TYPE A (TON)	INC. HMA SURFACING (TON)	BIT. MAT. (PRIME COAT) (TON)	REMARKS
131+01.6	RT	HMA	25.0		0.93	0.003	
132+60.0	RT	AGGREGATE	25.0	0.93			
135+24.0	LT	AGGREGATE	30.0	1.11			
145+27.2	RT	AGGREGATE	40.0	1.48			
148+44.0	RT	HMA	30.0		1.11	0.003	
148+96.8	RT	HMA	30.0		1.11	0.003	
184+87.2	LT	HMA	35.0		1.30	0.004	
185+92.8	LT	AGGREGATE	30.0	1.11			
188+56.8	LT	AGGREGATE	35.0	1.30			
193+32.0	LT	AGGREGATE	40.0	1.48			
194+37.6	LT	AGGREGATE	40.0	1.48			
195+96.0	RT	AGGREGATE	35.0	1.30			
204+40.8	RT	HMA	45.0		1.67	0.005	DOUGLAS ROAD STORAGE
206+52.0	RT	HMA	80.0		2.96	0.008	HARTMANN FARM SUPPLY
206+52.0	LT	HMA	40.0		1.48	0.004	PAINTBALL EXTREME
208+10.4	RT	HMA	60.0		2.22	0.006	HARTMANN FARM SUPPLY
219+72.0	LT	AGGREGATE	35.0	1.30			
226+58.4	LT	AGGREGATE	40.0	1.48			
240+84.0	RT	HMA	30.0		1.11	0.003	
256+15.2	LT	AGGREGATE	30.0	1.11			

	14.07	13.89	0.04
TOTALS	14	14	0.1

SIDEROAD SCHEDULE							
STATION		EXISTING MATERIAL	WIDTH (FT)	AGG. SURF. CSE., TYPE A (TON)	INC. HMA SURFACING (TON)	BIT. MAT. (PRIME COAT) (TON)	REMARKS
116+76.0	RT	HMA	66.0		10.19	0.028	ROENICKE RD.
116+76.0	LT	HMA	66.0		10.19	0.028	ROENICKE RD.
198+60.0	RT	HMA	74.0		11.42	0.032	SAXTOWN RD.
198+60.0	LT	HMA	74.0		11.42	0.032	SAXTOWN RD.
203+88.0	LT	AGGREGATE	30.0	6.94			SAPPINGTON CT.
239+25.6	RT	HMA	72.0		11.11	0.031	MUELLER LN.
242+42.4	RT	HMA	50.0		7.72	0.022	CLUBHOUSE LN.

	6.94	62.05	0.173
TOTALS	7	63	0.2

FILE NAME =	USER NAME = #USER#	DESIGNED -	REVISED -	STATE OF ILLINOIS DEPARTMENT OF TRANSPORTATION	SCHEDULE OF QUANTITIES	F.A.S. RTE.	SECTION	COUNTY	TOTAL SHEETS	SHEET NO.	
#FILE#		DRAWN -	REVISED -			840	233RS	ST. CLAIR	31	8	
		CHECKED -	REVISED -			CONTRACT NO. 76067					
		DATE -	REVISED -			FED. ROAD DIST. NO. ILLINOIS FED. AID PROJECT					
		PLOT SCALE = #SCALE#		SCALE: _____		SHEET NO. ___ OF ___ SHEETS		STA. _____ TO STA. _____			
		PLOT DATE = #DATE#									

SIDEROADS ON DOUGLAS/MILLSTADT RD				
STATION	SIDEROAD	EXISTING MATERIAL	CONCRETE SURFACE REMOVAL-BUTT (SQ. YD.)	HMA SURFACE REMOVAL-BUTT JOINT (SQ. YD.)
113+62.0		CONCRETE	73.33	
116+76.0	ROENICKE RD.	HMA		91.67
116+76.0	ROENICKE RD.	HMA		91.67
198+60.0	SAXTOWN RD.	HMA		102.78
198+60.0	SAXTOWN RD.	HMA		102.78
239+25.6	MUELLER LN.	HMA		100.00
242+42.4	CLUBHOUSE LN.	HMA		69.44
267+74.0		HMA		30.56
			73.33	588.89
TOTAL			74	589

TEMPORARY RAMP SCHEDULE				
STATION	SIDEROAD	WIDTH (FT)	LENGTH (FT)	TEMPORARY RAMP (SQ. YD.)
113+62.0		22	5	12.22
116+76.0	ROENICKE RD.	66.0	5	36.67
116+76.0	ROENICKE RD.	66.0	5	36.67
198+60.0	SAXTOWN RD.	74.0	5	41.11
198+60.0	SAXTOWN RD.	74.0	5	41.11
239+25.6	MUELLER LN.	72.0	5	40.00
242+42.4	CLUBHOUSE LN.	50.0	5	27.78
267+74.0		22.0	5	12.22
				247.8
TOTAL				248

NORTH AND SOUTH - FLORAVILLE RD.				
STATION	SIDEROAD	EXISTING MATERIAL	CONCRETE SURFACE REMOVAL-BUTT (SQ. YD.)	HMA SURFACE REMOVAL-BUTT JOINT (SQ. YD.)
0+00	FLORAVILLE RD.	HMA		73.33
4+26	FLORAVILLE RD.	HMA		73.33
			0.00	146.67
TOTAL			0	147

TEMPORARY RAMP SCHEDULE				
STATION	SIDEROAD	WIDTH (FT)	LENGTH (FT)	TEMPORARY RAMP (SQ. YD.)
0+00	FLORAVILLE RD.	22.0	5	12.22
4+26	FLORAVILLE RD.	22.0	5	12.22
				24.4
TOTAL				25

MAIL BOX TURNOUTS				
STATION	RT/LT	BITUMINOUS MATERIALS (PRIME COAT) (TON)	INC. HMA SURFACING (TON)	AGG. SURF. CSE., TYPE A (TON)
130+48.8	RT	0.005	2.33	0.83
132+60	RT			2.85
145+80	RT			4.15
148+44	RT	0.007	3.11	0.40
187+51.2	LT			3.70
189+36.2	LT			2.90
194+90.4	LT	0.003	1.6	0.20
203+88	LT			3.00
205+99.2	LT			6.00
214+44	LT			3.00
226+58.4	LT			3.00
		0.016	7.04	30.03
TOTAL		0.02	7	30

FILE NAME =	USER NAME = #USER#	DESIGNED - ---	REVISED - ---	STATE OF ILLINOIS DEPARTMENT OF TRANSPORTATION	SCHEDULE OF QUANTITIES	F.A.S. RTE.	SECTION	COUNTY	TOTAL SHEETS	SHEET NO.
#FILE#		DRAWN - ---	REVISED - ---			840	233RS	ST. CLAIR	31	9
		CHECKED - ---	REVISED - ---			CONTRACT NO. 76067				
		DATE - ---	REVISED - ---	SCALE: _____ SHEET NO. ___ OF ___ SHEETS STA. _____ TO STA. _____		FED. ROAD DIST. NO. _ ILLINOIS FED. AID PROJECT				

GUARDRAIL REMOVAL					
LOCATION NUMBER	STATION		STATION	LOCATION DESCRIPTION	GUARDRAIL REMOVAL (FT)
1	127+84.8	TO	130+24.8	RT	240
2	127+84.8	TO	134+86.8	LT	702
3	131+01.6	TO	131+30.6	RT	29
4	133+12.8	TO	135+38.8	RT	226
5	166+92	TO	171+92	LT	500
6	168+74	TO	171+77	RT	303
7	174+68	TO	175+71	LT	103
8	174+34	TO	175+38	RT	104
9	179+06.4	TO	181+82.4	RT	276
10	179+31.4	TO	182+09.4	LT	278
11	199+12.8	TO	200+90.8	LT	178
12	208+10.4	TO	211+18.4	RT	308
13	209+16.0	TO	211+69	LT	253

TOTALS	3500
--------	------

GUARDRAIL SCHEDULE									
LOCATION NUMBER	STATION	TO	STATION	RT/LT	SPBGR, TYPE A 6 FT POSTS (FT)	SPBGR, TYPE A 9 FT POSTS (FT)	TBT, TYPE 1 (SPEC) TANGENT (EACH)	GUARDRAIL MARKERS, TYPE A (EACH)	TERMINAL MARKER - DIRECT APPLIED (EACH)
1	128+91	TO	130+41	RT	150		2	2 @ 50' SPACING	2
2	128+64	TO	134+64	LT	600		2	8 @ 75' SPACING	2
3	131+81.3	TO	132+00	RT	18.75		2	1 @ 9' SPACING	2
4	133+20	TO	136+01.3	RT	281.25		2	4 @ 70' SPACING	2
5	135+34	TO	136+34	LT			2		2
6	164+76.4	TO	165+76.4	LT			2		2
7	167+39.1	TO	170+01.6	RT		262.5	2	4 @ 65' SPACING	2
8	166+33.9	TO	171+33.9	LT		500	2	7 @ 71' SPACING	2
9	170+71.6	TO	171+71.6	RT			2		2
10	209+65.9	TO	212+78.4	LT	312.5		2	4 @ 78' SPACING	2
11	213+48.4	TO	214+48.4	LT			2		2
TOTAL					1362.5	762.5	22	30	22

FILE NAME =	USER NAME = #USER#	DESIGNED - ---	REVISED - ---	STATE OF ILLINOIS DEPARTMENT OF TRANSPORTATION	SCHEDULE OF QUANTITIES			F.A.S. RTE.	SECTION	COUNTY	TOTAL SHEETS	SHEET NO.
#FILE#		DRAWN - ---	REVISED - ---		SCALE: _____	SHEET NO. _____ OF _____ SHEETS	STA. _____ TO STA. _____	840	233RS	ST. CLAIR	31	10
		CHECKED - ---	REVISED - ---					CONTRACT NO. 76067				
		DATE - -----	REVISED - ---				FED. ROAD DIST. NO. _____ ILLINOIS FED. AID PROJECT					

DOUGLAS/MILLSTADT RD. - HOT-MIX ASPHALT RESURFACING SCHEDULE						
LOCATION			BITUMINOUS MATERIALS (PRIME COAT)	AGGREGATE (PRIME COAT)	LEVELING BINDER (MACHINE METHOD) N70	HMA SURFACE COURSE MIX C, N70
STA.	TO	STA.	(TON)	(TON)	(TON)	(TON)
113+62	TO	116+38	0.23	1.10	41.2	61.8
116+38	TO	117+14	0.06	0.30	11.3	17.0
117+14	TO	130+89.1	1.15	5.50	205.3	308.0
130+89.1	TO	131+14.1	0.02	0.10	3.7	5.6
131+14.1	TO	148+29	1.43	6.86	256.1	384.1
148+29	TO	148+59	0.03	0.12	4.5	6.7
148+59	TO	148+81.8	0.02	0.09	3.4	5.1
148+81.8	TO	149+11.8	0.03	0.12	4.5	6.7
149+11.8	TO	184+69.7	2.97	14.23	531.3	797.0
184+69.7	TO	185+04.7	0.03	0.14	5.2	7.8
185+04.7	TO	198+18	1.10	5.25	196.1	294.2
198+18	TO	199+02	0.07	0.34	12.5	18.8
199+02	TO	204+18.3	0.43	2.07	77.1	115.7
204+18.3	TO	204+63.3	0.04	0.18	6.7	10.1
204+63.3	TO	206+12	0.12	0.59	22.2	33.3
206+12	TO	206+32	0.02	0.08	3.0	4.5
206+32	TO	206+72	0.03	0.16	6.0	9.0
206+72	TO	206+92	0.02	0.08	3.0	4.5
206+92	TO	207+80.4	0.07	0.35	13.2	19.8
207+80.4	TO	208+40.4	0.05	0.24	9.0	13.4
208+40.4	TO	238+84.6	2.54	12.18	454.6	681.9
238+84.6	TO	239+66.6	0.07	0.33	12.2	18.4
239+66.6	TO	240+69	0.09	0.41	15.3	22.9
240+69	TO	240+99	0.03	0.12	4.5	6.7
240+99	TO	261+96	1.75	8.39	313.2	469.7
261+96	TO	264+07.2	0.18	0.84	31.5	47.3
264+07.2	TO	267+74	0.31	1.47	54.8	82.2
TOTAL			12.86	61.65	2301.5	3452.3
TOTAL			12.9	61.7	2302	3453

1' SAFETY SHOULDER	
LEVELING BINDER (MACHINE METHOD) N70 (1' SAFETY SHOULDER)	RT/LT
(TON)	
12.0	RT/LT
OMISSION	-----
59.9	RT/LT
0.5	LT
74.7	RT/LT
0.7	LT
1.0	RT/LT
0.7	LT
155.0	RT/LT
0.8	RT
57.2	RT/LT
OMISSION	-----
22.5	RT/LT
1.0	LT
6.5	RT/LT
0.4	LT
OMISSION	-----
0.4	LT
3.9	RT/LT
1.3	LT
132.6	RT/LT
1.8	LT
4.5	RT/LT
0.7	LT
91.3	RT/LT
OMISSION	-----
OMISSION	-----
629.2	
630	

FLORAVILLE RD. - HOT-MIX ASPHALT RESURFACING SCHEDULE							
LOCATION			BITUMINOUS MATERIALS (PRIME COAT)	AGGREGATE (PRIME COAT)	LEVELING BINDER (MACHINE METHOD) N70	HMA SURFACE COURSE MIX C, N70	
STA.	TO	STA.	(TON)	(TON)	(TON)	(TON)	
0+00	TO	2+07	0.26	1.23	45.9	68.8	
2+07	TO	2+29	OMISSION DUE TO DOUGLAS/MILLSTADT RD.				
2+29	TO	4+26	0.24	1.17	43.8	65.7	
TOTAL			0.50	2	89.6	134.5	
TOTAL			0.50	2.0	90	135	

FILE NAME =	USER NAME = #USER#	DESIGNED - ---	REVISED - ---	STATE OF ILLINOIS DEPARTMENT OF TRANSPORTATION	SCHEDULE OF QUANTITIES		F.A.S. RTE.	SECTION	COUNTY	TOTAL SHEETS	SHEET NO.	
#FILE#		DRAWN - ---	REVISED - ---		SCALE: _____	SHEET NO. _____ OF _____ SHEETS	STA. _____ TO STA. _____	840	233RS	ST. CLAIR	31	11
	PLOT SCALE = #SCALE#	CHECKED - ---	REVISED - ---								CONTRACT NO. 76067	
	PLOT DATE = #DATE#	DATE - -----	REVISED - ---								FED. ROAD DIST. NO. [ILLINOIS] FED. AID PROJECT	

PARTIAL DEPTH PATCHING							
PATCH #	STATION		LENGTH (FT)	WIDTH (FT)	PARTIAL DEPTH REMOVAL 2" (SQ. YD.)	PARTIAL DEPTH PATCH 2" (TON)	BITUMINOUS MATERIALS (PRIME COAT) (TON)
1	117+28.8	CL	10.0	2.0	2.22	0.25	0.00042
2	119+40.0	LT	2.0	11.0	2.44	0.27	0.00045
3	120+45.6	RT	11.0	2.0	2.44	0.27	0.00045
4	125+20.8	CL	10.0	6.0	6.67	0.75	0.00056
5	126+26.4	RT	11.0	2.0	2.44	0.27	0.00045
6	131+01.6	RT	4.0	4.0	1.78	0.20	0.00028
7	136+29.6	CL	10.0	2.0	2.22	0.25	0.00042
8	136+82.4	RT	2.0	4.0	0.89	0.10	0.00021
9	137+35.2	RT	2.0	4.0	0.89	0.10	0.00021
10	151+08.0	CL	10.0	2.0	2.22	0.25	0.00042
11	157+41.6	RT	10.0	11.0	12.22	1.37	0.00073
12	157+41.6	LT	4.0	4.0	1.78	0.20	0.00028
13	170+08.8	LT	2.0	11.0	2.44	0.27	0.00045
14	172+20.0	RT	4.0	4.0	1.78	0.20	0.00028
15	172+20.0	CL	10.0	2.0	2.22	0.25	0.00042
16	172+20.0	LT	2.0	2.0	0.44	0.05	0.00014
17	174+31.2	LT	2.0	2.0	0.44	0.05	0.00014
18	175+36.8	LT	2.0	2.0	0.44	0.05	0.00014
19	188+56.8	CL	10.0	2.0	2.22	0.25	0.00042
20	200+18.4	CL	20.0	2.0	4.44	0.50	0.00076
21	201+76.8	RT	2.0	4.0	0.89	0.10	0.00021
22	205+99.2	LT	4.0	4.0	1.78	0.20	0.00028
23	206+52.0	CL	10.0	2.0	2.22	0.25	0.00042
24	207+04.8	CL	10.0	2.0	2.22	0.25	0.00042
25	207+57.6	CL	20.0	2.0	4.44	0.50	0.00076
26	208+10.4	CL	20.0	2.0	4.44	0.50	0.00076
27	209+16.0	CL	120.0	2.0	26.67	2.99	0.00424
28	216+02.4	CL	6.0	2.0	1.33	0.15	0.00028
29	222+36.0	CL	20.0	2.0	4.44	0.50	0.00076
30	239+25.6	LT	2.0	6.0	1.33	0.15	0.00028
31	239+78.4	RT	4.0	4.0	1.78	0.20	0.00028
32	239+78.4	LT	4.0	4.0	1.78	0.20	0.00028
33	240+31.2	RT	2.0	2.0	0.44	0.05	0.00014
34	241+36.8	CL	10.0	2.0	2.22	0.25	0.00042
35	241+89.6	LT	6.0	4.0	2.67	0.30	0.00035
36	242+95.2	LT	4.0	4.0	1.78	0.20	0.00028
37	242+95.2	LT	2.0	6.0	1.33	0.15	0.00028
38	243+48.0	LT	4.0	4.0	1.78	0.20	0.00028
39	244+00.8	RT	4.0	4.0	1.78	0.20	0.00028
40	244+00.8	CL	8.0	2.0	1.78	0.20	0.00035
41	244+53.6	RT	4.0	4.0	1.78	0.20	0.00028
42	244+53.6	LT	2.0	10.0	2.22	0.25	0.00042
43	245+06.4	RT	2.0	2.0	0.44	0.05	0.00014
44	245+06.4	LT	4.0	4.0	1.78	0.20	0.00028
45	245+59.2	RT	4.0	8.0	3.56	0.40	0.00042
46	248+23.2	CL	8.0	2.0	1.78	0.20	0.00035
47	257+73.6	CL	12.0	2.0	2.67	0.30	0.00049
48	257+73.6	LT	4.0	4.0	1.78	0.20	0.00028
49	258+26.4	RT	11.0	2.0	2.44	0.27	0.00045
50	258+26.4	LT	11.0	2.0	2.44	0.27	0.00045
51	260+37.6	RT	4.0	10.0	4.44	0.50	0.00049
52	260+90.4	CL	8.0	2.0	1.78	0.20	0.00035
53	261+43.2	RT	100.0	2.0	22.22	2.49	0.00355
54	261+43.2	CL	6.0	2.0	1.33	0.15	0.00028
55	261+43.2	LT	100.0	2.0	22.22	2.49	0.00355
56	261+96.0	CL	8.0	2.0	1.78	0.20	0.00035

TOTALS	195	22	0.031
--------	-----	----	-------

CLASS B PAVEMENT PATCHING 9 INCH SCHEDULE							
LOCATION	LANE	LANE	LENGTH (FT)	LANE WIDTH (FT)	CLASS B PATCH TYPE II (SQ YD)	DOWEL BARS 1 1/2 Inch (EACH)	SAWCUT (FT)
116+76.0	SB		6.0	11.0	7.3	20	45.0
116+76.0		NB	6.0	11.0	7.3	20	45.0
124+15.2	SB		8.0	11.0	9.8	20	49.0
126+26.4		NB	10.0	11.0	12.2	20	53.0
140+52.0	SB		10.0	11.0	12.2	20	53.0
145+80.0		NB	10.0	11.0	12.2	20	53.0
153+72.0		NB	10.0	11.0	12.2	20	53.0
155+83.2	SB		6.0	11.0	7.3	20	45.0
155+83.2		NB	6.0	11.0	7.3	20	45.0
178+00.8	SB		6.0	11.0	7.3	20	45.0
178+00.8		NB	6.0	11.0	7.3	20	45.0
183+28.8		NB	10.0	11.0	12.2	20	53.0
204+40.8	SB		6.0	11.0	7.3	20	45.0
209+95.2	SB		10.0	11.0	12.2	20	53.0
210+21.6	SB		10.0	11.0	12.2	20	53.0
217+08.0	SB		10.0	11.0	12.2	20	53.0
217+08.0		NB	10.0	11.0	12.2	20	53.0
219+72.0	SB		10.0	11.0	12.2	20	53.0
219+72.0		NB	10.0	11.0	12.2	20	53.0
222+36.0	SB		10.0	11.0	12.2	20	53.0
222+36.0		NB	10.0	11.0	12.2	20	53.0
222+88.8	SB		10.0	11.0	12.2	20	53.0
222+88.8		NB	10.0	11.0	12.2	20	53.0
230+80.8	SB		10.0	11.0	12.2	20	53.0
230+80.8		NB	10.0	11.0	12.2	20	53.0
236+61.6	SB		10.0	11.0	12.2	20	53.0
236+61.6		NB	10.0	11.0	12.2	20	53.0
238+72.8		NB	10.0	11.0	12.2	20	53.0
240+84.0	SB		6.0	11.0	7.3	20	45.0
241+36.8	SB		6.0	11.0	7.3	20	45.0
251+92.8		NB	10.0	11.0	12.2	20	53.0
259+84.8		NB	6.0	11.0	7.3	20	45.0
263+01.6	SB		6.0	11.0	7.3	20	45.0
263+01.6		NB	6.0	11.0	7.3	20	45.0
264+60.0		NB	6.0	11.0	7.3	20	45.0
SUBTOTAL:					361.8	700	1747.0
ANTICIPATED FAILURES (15%):					54.3	105	262.1
TOTAL					416	805	2009

FILE NAME =	USER NAME = #USER#	DESIGNED -	REVISED -	STATE OF ILLINOIS DEPARTMENT OF TRANSPORTATION	SCHEDULE OF QUANTITIES		F.A.S. RTE. 840	SECTION 233RS	COUNTY ST. CLAIR	TOTAL SHEETS 31	SHEET NO. 12	
#FILE#	PLOT SCALE = #SCALE#	DRAWN -	REVISED -		SCALE: _____	SHEET NO. _____ OF _____ SHEETS	STA. _____ TO STA. _____	FED. ROAD DIST. NO. _____ ILLINOIS FED. AID PROJECT				
	PLOT DATE = #DATE#	CHECKED -	REVISED -		CONTRACT NO. 76D67							
		DATE -	REVISED -									

THERMOPLASTIC PAVEMENT MARKING - LINE 4"								THERMOPLASTIC PAVEMENT MARKING - LINE 24" WHITE STOP BAR	PAINT PAVEMENT MARKING CURB
BEGINNING STATION	ENDING STATION	EDGELINE WHITE	SKIP-DASH YELLOW	NPZ		SOLID YELLOW			
				LT	RT				
		(FT)	(FT)			(FT)	(FT)		
DOUGLAS/MILLSTADT RD.									
113+62	TO 116+38	552.0	69						
116+38	TO 117+14	OMISSION							
117+14	TO 148+44	6260.0	783						
148+44	TO 159+00	2112.0	264		X	1056			
159+00	TO 177+48	3696.0	0	X	X	3696			
177+48	TO 188+04	2112.0	264	X		1056			
188+04	TO 198+18	2028.0	254						
198+18	TO 199+02	OMISSION							
199+02	TO 238+84.6	7965.2	996						
238+84.6	TO 239+66.6	82.0	21	OMISSION FOR ONLY RT					
239+66.6	TO 262+48.8	4564.4	571				11		
IN FRONT OF MEDIANS		40.0							
263+54.4	TO 267+74	839.2	105	X		419.6	11		
FLORAVILLE RD.									
0+00	TO 1+87	374.0	0	X	X	374	35	30	
1+87	TO 2+49	OMISSION							
2+49	TO 4+26	354.0	45	X		177	35	30	
TOTALS		30978.8	3372			6778.6	92	60	
TOTALS		30979	3372			6779	92	60	

DOUGLAS/MILLSTADT RD. SHORT TERM PAVEMENT MARKING					
BEGINNING STATION	ENDING STATION	SKIP-DASH YELLOW	WHITE STOP BAR 12"	WORK ZONE PM REMOVAL	
		(FT)	(FT)	(SQ. FT.)	
113+62	TO 267+74	4203.3	198.0	489.0	
TOTALS		4203.3	198.0	489.0	
TOTALS		4402		489	

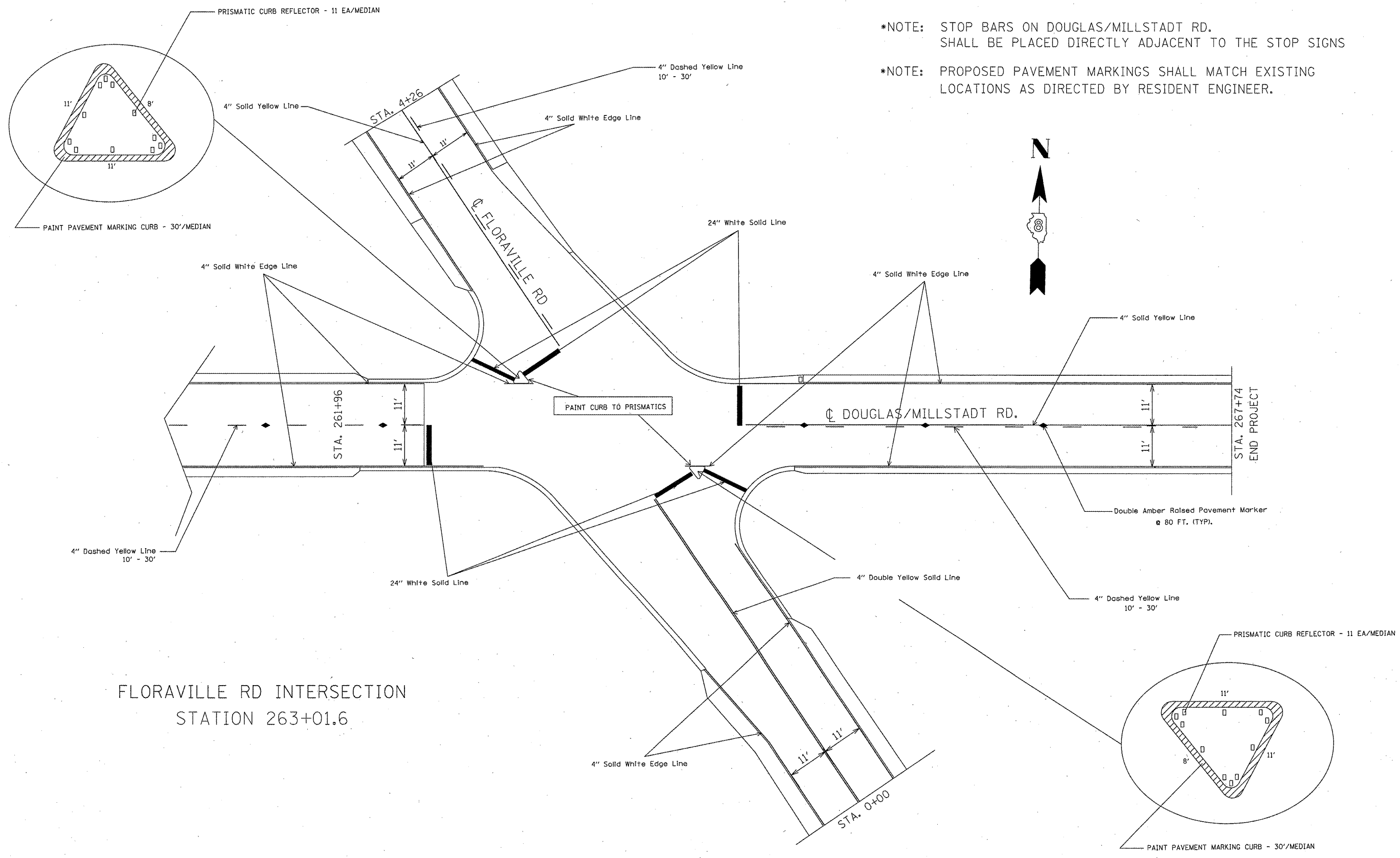
FLORAVILLE RD. SHORT TERM PAVEMENT MARKING					
BEGINNING STATION	ENDING STATION	SKIP-DASH YELLOW	WHITE STOP BAR 12"	WORK ZONE PM REMOVAL	
		(FT)	(FT)	(SQ. FT.)	
0+00	TO 1+87	51.0	315.0	40.7	
1+87	TO 2+49	OMISSION			
2+49	TO 4+26	42.8	315.0	39.8	
TOTALS		94.0	630.0	80.4	
TOTALS		724		81	

PAVEMENT MARKERS			
LOCATION	RAISED REFLEC PAVEMENT MARK - DOUBLE AMBER	RAISED REFLECT MARK - REMOVAL	PRISMATIC CURB REFLECTORS
	(EACH)	(EACH)	(EACH)
DOUGLAS/MILLSTADT RD.			
STA. 113+62 TO STA. 116+76	5	5	
STA. 116 +76 TO STA. 198+60	102	102	
STA. 198+60 TO STA. 262+48.8	74	74	
STA. 264+07.2 TO STA. 267+74	5	5	
FLORAVILLE RD.			
STA. 0+00 TO STA. 1+87			11
STA. 1+87 TO STA. 2+49	OMISSION		
STA. 2+49 TO STA. 4+26			11
TOTALS	186	186	22

FILE NAME =	USER NAME = #USER#	DESIGNED -	REVISD -	STATE OF ILLINOIS DEPARTMENT OF TRANSPORTATION	SCHEDULE OF QUANTITIES	F.A.S. RTE.	SECTION	COUNTY	TOTAL SHEETS	SHEET NO.
#FILE#		DRAWN -	REVISD -			840	233RS	ST. CLAIR	31	13
		CHECKED -	REVISD -			CONTRACT NO. 76D67				
		PLOT SCALE = #SCALE#	REVISD -	SCALE: _____	SHEET NO. ___ OF ___ SHEETS	STA. _____ TO STA. _____	FED. ROAD DIST. NO. _ [ILLINOIS] FED. AID PROJECT			
		PLOT DATE = #DATE#	REVISD -							

SHOULDER SCHEDULE FOR DOUGLAS/MILLSTADT RD.						
LOCATION			RT/LT	BIT MATERIALS (PRIME COAT)	HOT-MIX ASPHALT SHOULDERS	AGGREGATE WEDGE SHOULDERS, TYPE B
STA	TO	STA		(TON)	(TON)	(TON)
DOUGLAS/MILLSTADT RD.						
113+62	TO	116+38	RT/LT			20.96
116+38	TO	117+14	-----			OMISSION
117+14	TO	130+89.1	RT/LT			104.41
130+89.1	TO	131+14.1	LT			0.95
131+14.1	TO	148+29	RT/LT			130.21
148+29	TO	148+59	LT			1.14
148+59	TO	148+81.8	RT/LT			1.73
148+81.8	TO	149+11.8	LT			1.14
149+11.8	TO	184+69.7	RT/LT			270.14
184+69.7	TO	185+04.7	RT			1.33
185+04.7	TO	198+18	RT/LT			99.71
198+18	TO	199+02	-----			OMISSION
199+02	TO	204+18.3	RT/LT			39.20
204+18.3	TO	204+63.3	LT			1.71
204+63.3	TO	206+12	RT/LT			11.29
206+12	TO	206+32	LT			0.76
206+32	TO	206+72	-----			OMISSION
206+72	TO	206+92	LT			0.76
206+92	TO	207+80.4	RT/LT			6.71
207+80.4	TO	208+40.4	LT			2.28
208+40.4	TO	238+84.6	RT/LT			231.13
238+84.6	TO	239+66.6	LT			3.11
239+66.6	TO	240+69	RT/LT			7.77
240+69	TO	240+99	LT			1.14
240+99	TO	261+96	RT/LT			159.22
261+96	TO	264+07.2	-----			OMISSION
264+07.2	TO	267+24	RT/LT	0.128	58.74	27.85
FLORAVILLE RD.						
0+00	TO	1+00	RT/LT	0.06	24.95	7.90
3+26	TO	3+76	LT	0.01	3.99	2.10
3+26	TO	3+76	RT	0.00	1.94	2.10
3+76	TO	4+26	RT/LT	0.03	12.90	3.80
				0.224	102.52	1140.54
TOTAL				0.23	103	1141

FILE NAME =	USER NAME = #USER#	DESIGNED - ---	REVISED - ---	STATE OF ILLINOIS DEPARTMENT OF TRANSPORTATION	SCHEDULE OF QUANTITIES	F.A.S. RTE.	SECTION	COUNTY	TOTAL SHEETS	SHEET NO.
#FILE#		DRAWN - ---	REVISED - ---			840	233RS	ST. CLAIR	31	14
		CHECKED - ---	REVISED - ---			SCALE: _____ SHEET NO. ___ OF ___ SHEETS STA. _____ TO STA. _____		CONTRACT NO. 76067		
		DATE - -----	REVISED - ---			FED. ROAD DIST. NO. _ ILLINOIS FED. AID PROJECT				



*NOTE: STOP BARS ON DOUGLAS/MILLSTADT RD. SHALL BE PLACED DIRECTLY ADJACENT TO THE STOP SIGNS

*NOTE: PROPOSED PAVEMENT MARKINGS SHALL MATCH EXISTING LOCATIONS AS DIRECTED BY RESIDENT ENGINEER.

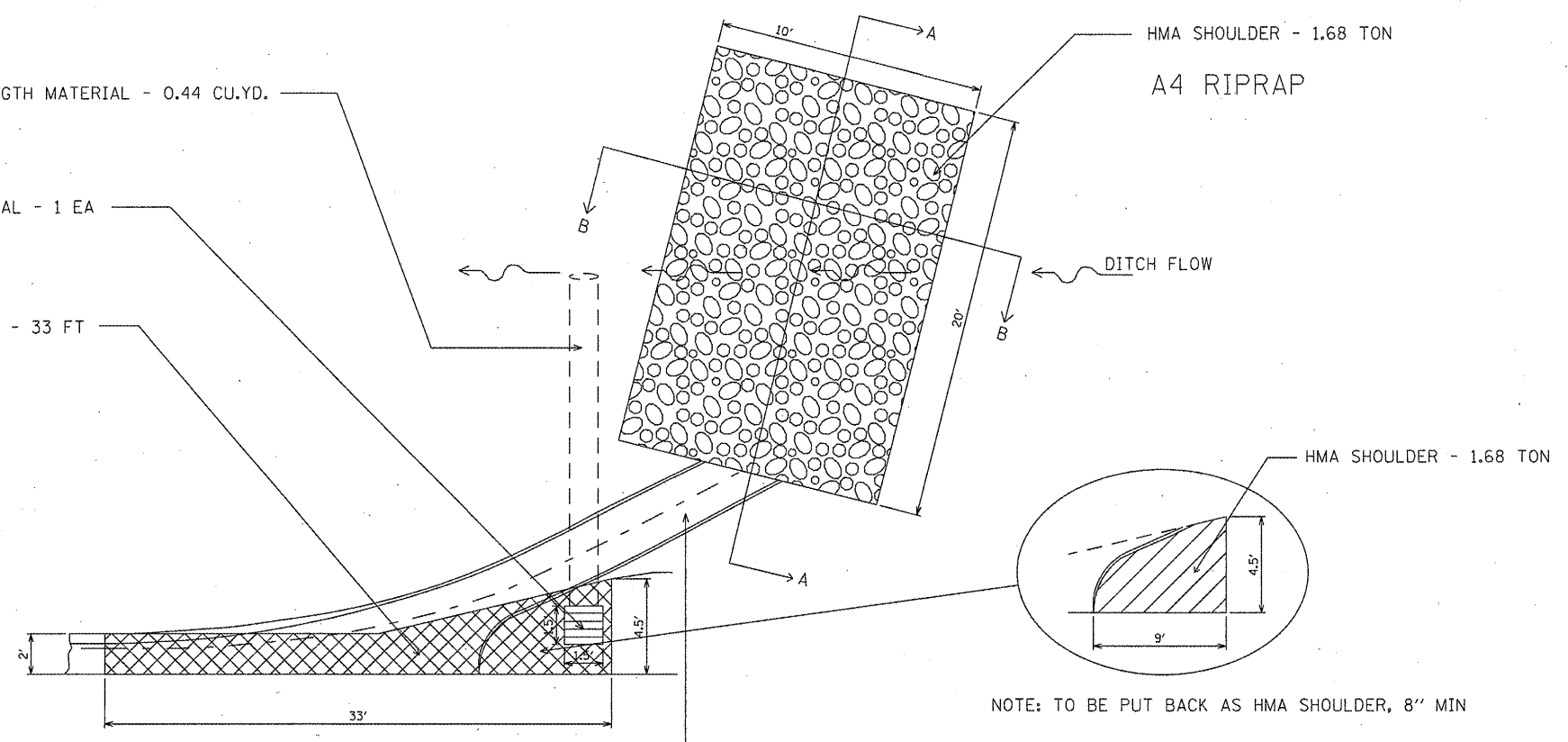
FLORAVILLE RD INTERSECTION
STATION 263+01.6

FILE NAME =	USER NAME = #USER#	DESIGNED -	REVISED -	STATE OF ILLINOIS DEPARTMENT OF TRANSPORTATION	PAVEMENT MARKING DETAIL	F.A.S. RTE.	SECTION	COUNTY	TOTAL SHEET NO.	
#FILE#		DRAWN -	REVISED -			840	233RS	ST. CLAIR	31	15
		CHECKED -	REVISED -			CONTRACT NO. 76067				
		DATE -	REVISED -	SCALE: _____ SHEET NO. ___ OF ___ SHEETS STA. _____ TO STA. _____		FED. ROAD DIST. NO. _____ ILLINOIS FED. AID PROJECT				

CONTROLLED LOW-STRENGTH MATERIAL - 0.44 CU.YD.

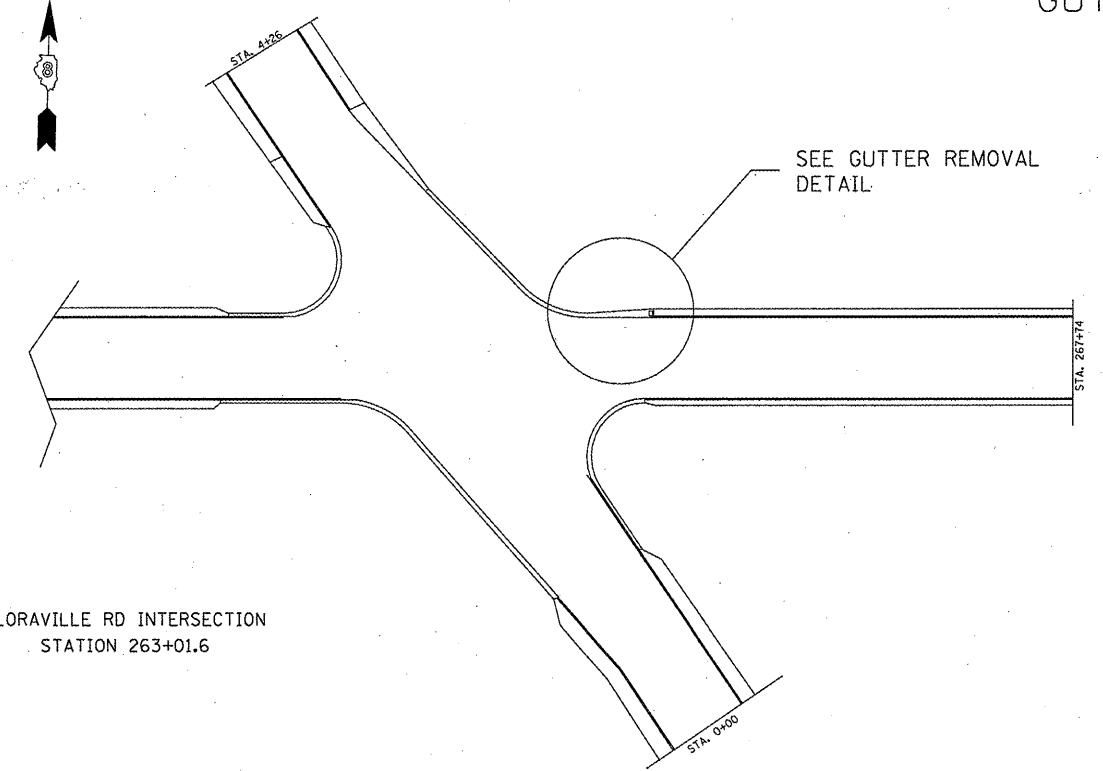
INLET REMOVAL - 1 EA

GUTTER REMOVAL - 33 FT



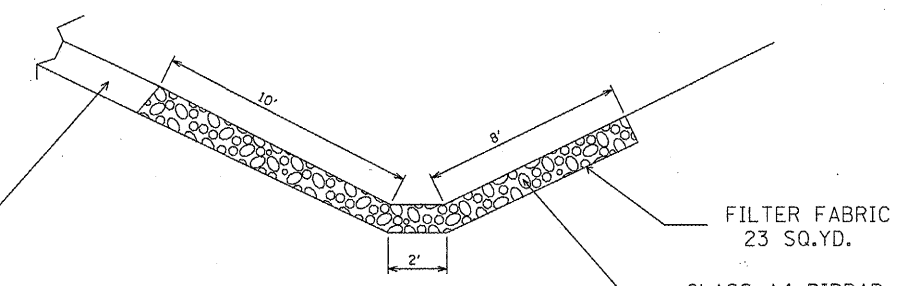
GUTTER REMOVAL DETAIL

NOTE: TO BE PUT BACK AS HMA SHOULDER, 8" MIN

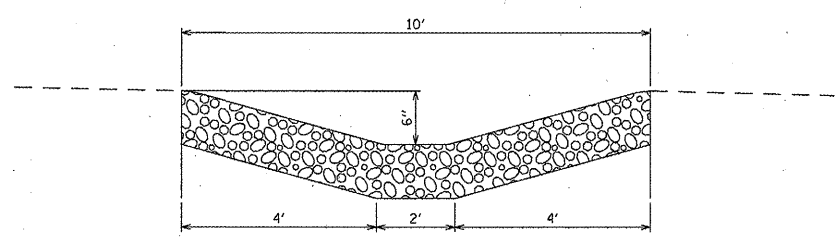


FLORAVILLE RD INTERSECTION
STATION 263+01.6

CLASS SI CONCRET OUTLET
2.38 CU.YD.



SECTION A-A



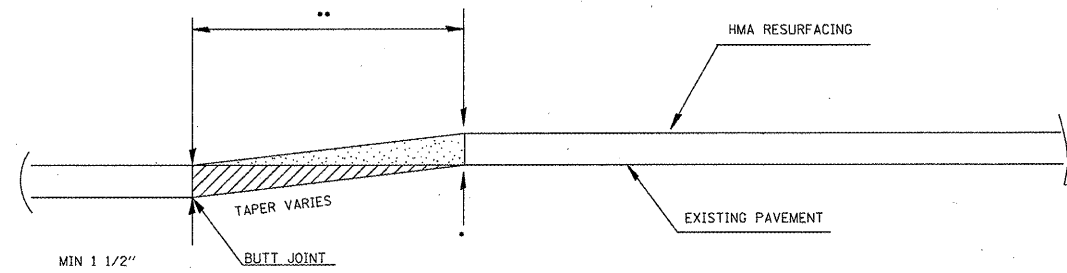
SECTION B-B

FILE NAME =	USER NAME = #USER#	DESIGNED -	REVISED -
#FILE#		DRAWN -	REVISED -
	PLOT SCALE = #SCALE#	CHECKED -	REVISED -
	PLOT DATE = #DATE#	DATE -	REVISED -

STATE OF ILLINOIS
DEPARTMENT OF TRANSPORTATION

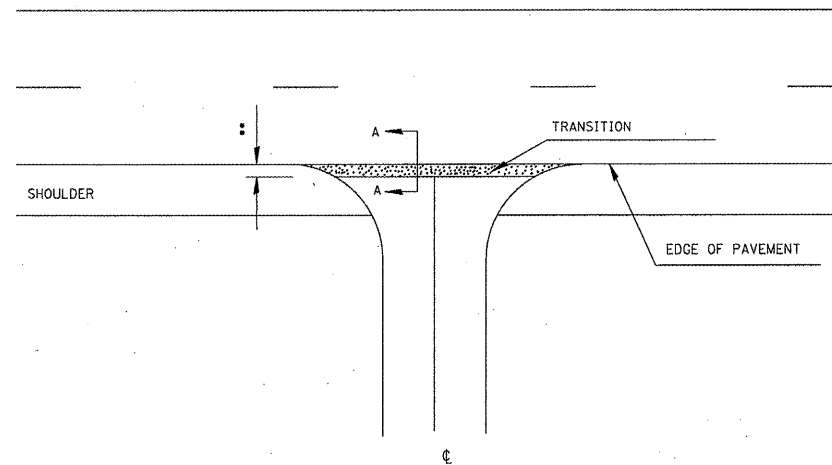
GUTTER DETAIL	
SCALE: _____	SHEET NO. ___ OF ___ SHEETS STA. _____ TO STA. _____

F.A.S. RTE.	SECTION	COUNTY	TOTAL SHEETS	SHEET NO.
840	233RS	ST. CLAIR	31	16
FED. ROAD DIST. NO. - ILLINOIS FED. AID PROJECT			CONTRACT NO. 76D67	



TRANSITION DETAIL
SECTION A-A

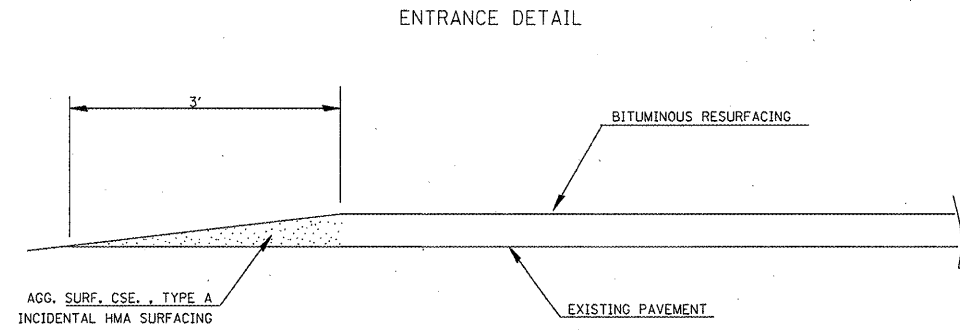
BUTT-JOINT ADDITION



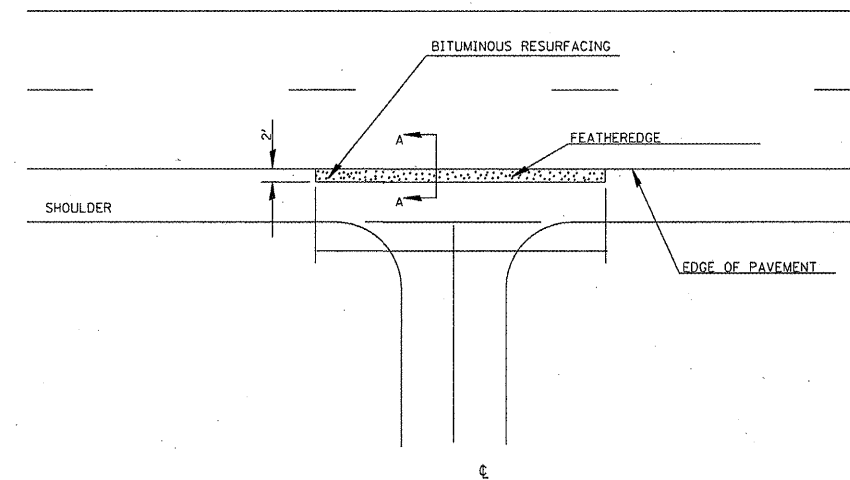
SIDEROAD DETAIL
BUTT JOINT

*EOP ELEVATION CHANGE	**TOTAL TRANSITION LENGTH
3/4"	3.5'
1"	5'
1-1/2"	7.5'
2"	10'
2-1/2"	12.5'
3"	15'
3-1/2"	17.5'
4"	20'
4-1/2"	22.5'
5"	25'
5-1/2"	27.5'
6"	30'

NOTE:
WHERE THE HMA TRANSITION IS MATCHING INTO AN EXISTING HMA SIDE ROAD SURFACE, A MILLED BUTT JOINT SHALL BE CONSTRUCTED WITHIN THE LIMITS OF THE TOTAL TRANSITION LENGTH ON THE LOCAL ROUTE.



ENTRANCE DETAIL
SECTION A-A



ENTRANCE DETAIL

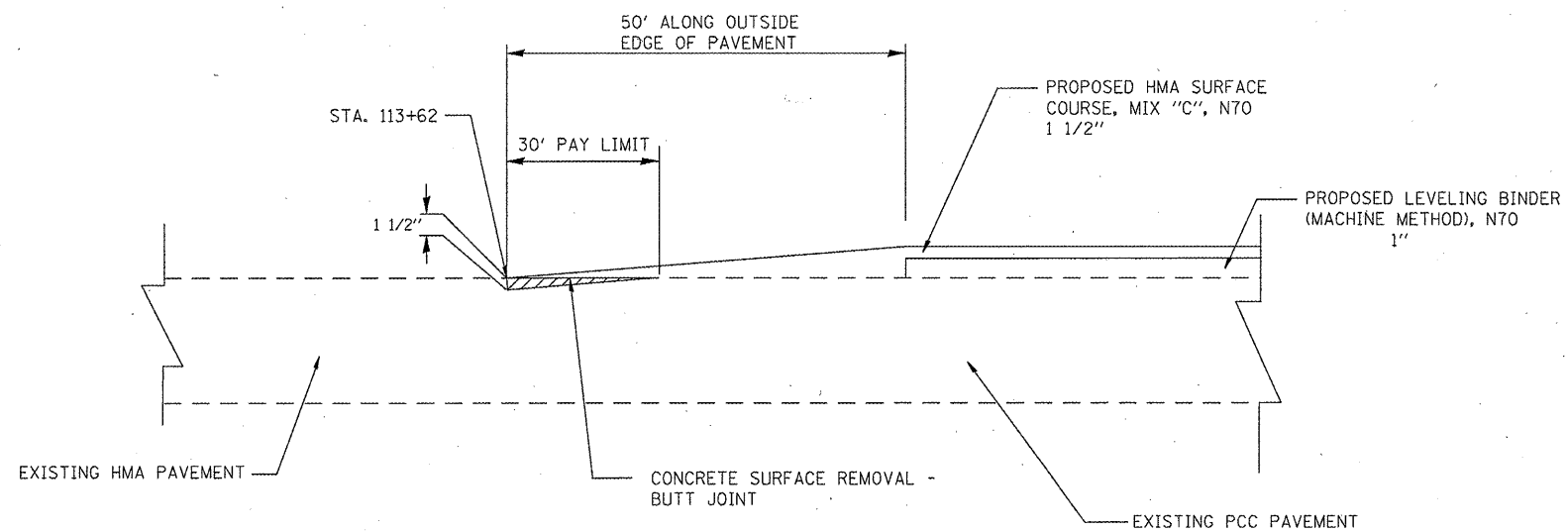
FILE NAME =	USER NAME = #USER#	DESIGNED -	REVISED -
#FILE#		DRAWN -	REVISED -
	PLOT SCALE = #SCALE#	CHECKED -	REVISED -
	PLOT DATE = #DATE#	DATE -	REVISED -

STATE OF ILLINOIS
DEPARTMENT OF TRANSPORTATION

SIDEROAD AND ENTRANCE DETAIL

SCALE: SHEET NO. OF SHEETS STA. TO STA.

F.A.S. RTE.	SECTION	COUNTY	TOTAL SHEETS	SHEET NO.
840	233RS	ST. CLAIR	31	17
FED. ROAD DIST. NO. ILLINOIS FED. AID PROJECT			CONTRACT NO. 76D67	

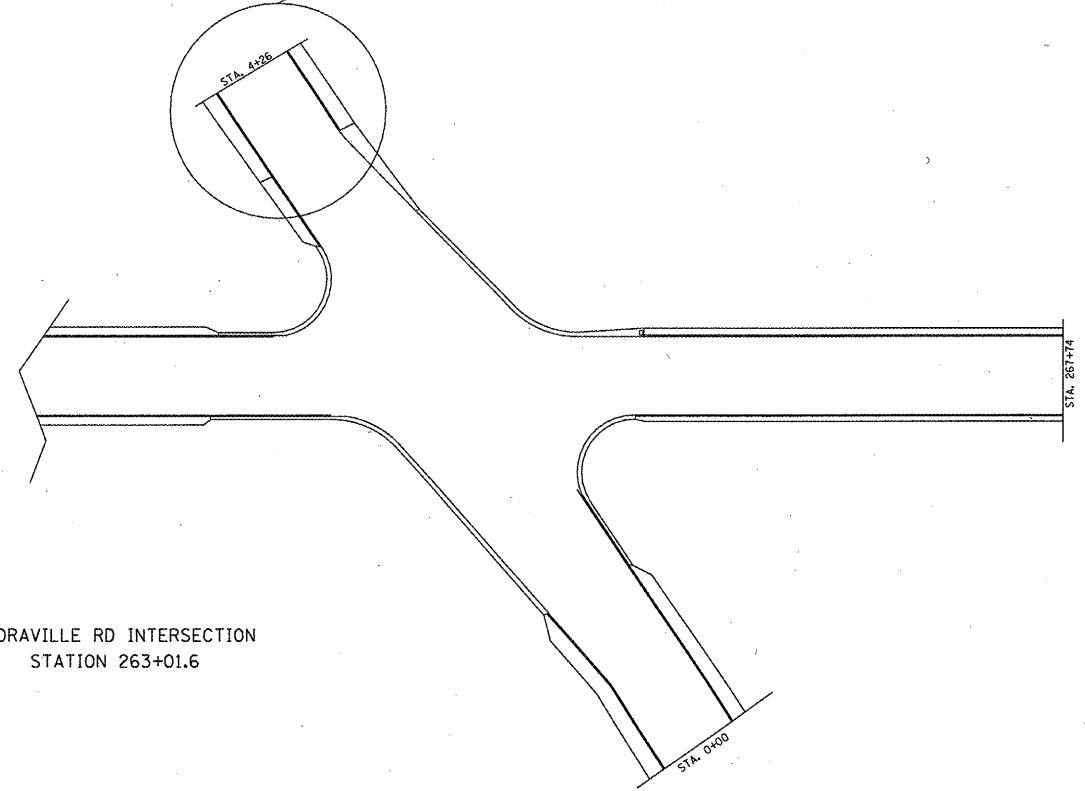


CONCRETE SURFACE REMOVAL - BUTT JOINT

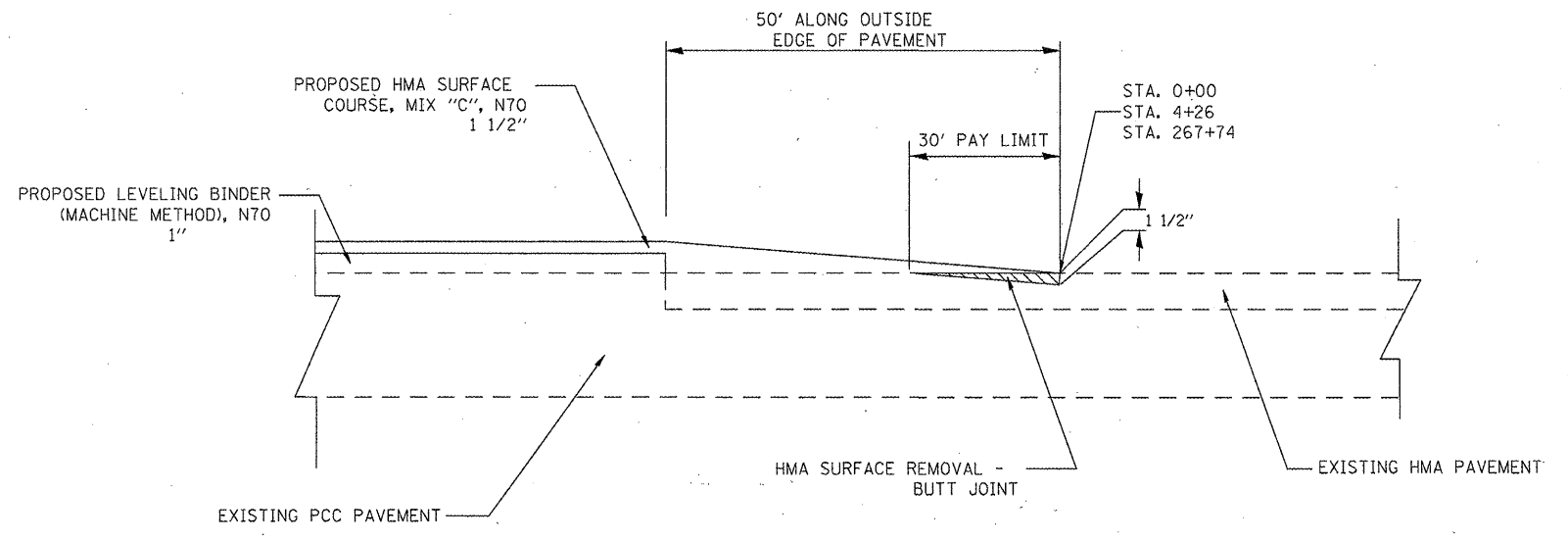
DOUGLAS/MILLSTADT RD.
STA. 113+62

FILE NAME = #FILE#	USER NAME = #USER#	DESIGNED - ---	REVISED - ---	STATE OF ILLINOIS DEPARTMENT OF TRANSPORTATION	BUTT JOINT DETAIL		F.A.S. RTE.	SECTION	COUNTY	TOTAL SHEETS	SHEET NO.
	PLOT SCALE = #SCALE#	CHECKED - ---	REVISED - ---				840	233RS	ST. CLAIR	31	18
	PLOT DATE = #DATE#	DATE - ---	REVISED - ---				SCALE: _____ SHEET NO. ___ OF ___ SHEETS STA. _____ TO STA. _____		FED. ROAD DIST. NO. _____ ILLINOIS FED. AID PROJECT		CONTRACT NO. 76067

FLORAVILLE RD INTERSECTION
STATION 263+01.6



SEE HMA SURFACE
REMOVAL-BUTT JOINT DETAIL



HMA SURFACE REMOVAL - BUTT JOINT

SOUTH FLORAVILLE ROAD
STA. 0+00
NORTH FLORAVILLE ROAD
STA. 4+26
DOUGLAS/MILLSTADT RD.
STA. 267+74

FILE NAME =	USER NAME = #USER#	DESIGNED - ---	REVISED - ---	STATE OF ILLINOIS DEPARTMENT OF TRANSPORTATION	BUTT JOINT DETAIL		F.A.S. RTE. 840	SECTION 233RS	COUNTY ST. CLAIR	TOTAL SHEETS 31	SHEET NO. 19
#FILE#		DRAWN - ---	REVISED - ---		SCALE: -----	SHEET NO. ___ OF ___ SHEETS	STA. ----- TO STA. -----	CONTRACT NO. 76D67		FED. ROAD DIST. NO. ILLINOIS FED. AID PROJECT	
	PLOT SCALE = #SCALE#	CHECKED - ---	REVISED - ---								
	PLOT DATE = #DATE#	DATE - -----	REVISED - ---								

SCHEDULE OF QUANTITIES

STATION	DIMENSIONS		U Bar		h Bar	EXPANSION BOLTS	CONCRETE COLLAR	REINF. BARS
	X	Y	No.	Length	No.	No.	Cu. Yd	LBS
STA. 175+28 (LT)	3'-10"	2'-7"	4	8'-8"	11	8	0.57	34.16
STA. 180+66.4 (LT)	4'-4"	2'-10"	4	10'-0"	12	8	0.66	38.72
STA. 180+66.4 (RT)	4'-4"	2'-10"	4	10'-0"	12	8	0.66	38.72
STA. 199+17 (LT)	3'-10"	2'-7"	4	8'-8"	11	8	0.57	34.16
STA. 199+17 (RT)	3'-10"	2'-7"	4	8'-8"	11	8	0.57	34.16
					Total	40	3.1	180.0

All h Bars 450 (18) Long

General Notes

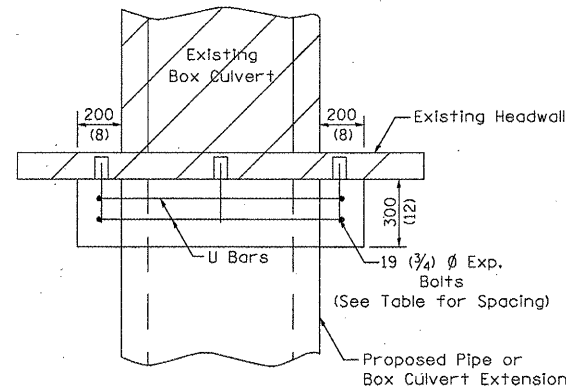
CONCRETE COLLARS SHALL BE CONSTRUCTED OF CLASS S1 CONCRETE IN ACCORDANCE WITH SECTION 503 OF THE STANDARD SPECIFICATIONS.

REINFORCEMENT BARS SHALL CONFORM TO SECTION 508 OF THE STANDARD SPECIFICATIONS.

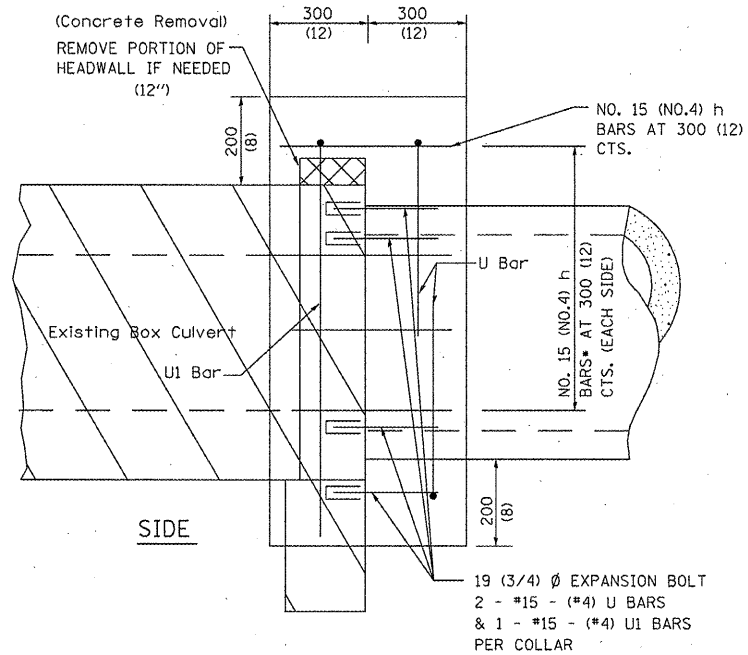
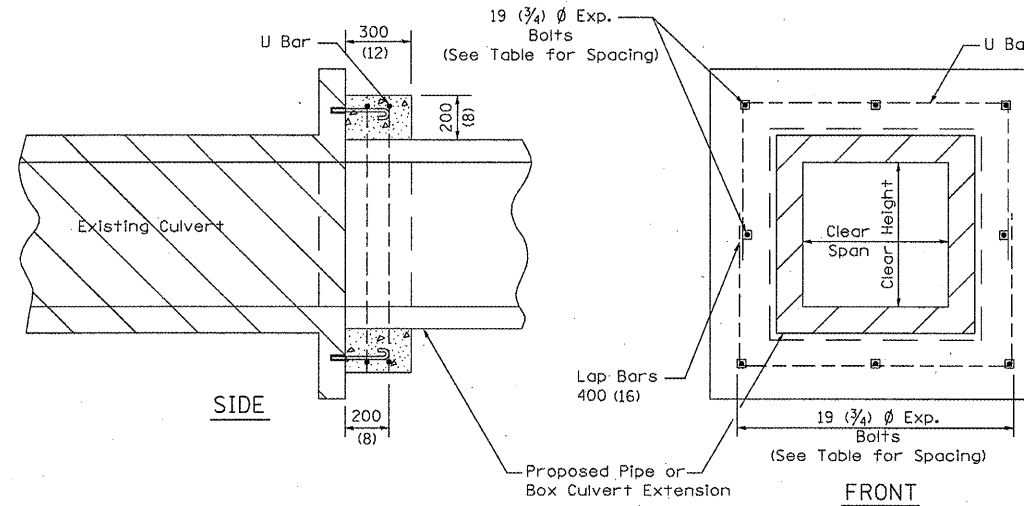
THE CONCRETE WILL BE PAID FOR AT THE CONTRACT UNIT PRICE PER CUBIC YARD FOR CONCRETE COLLAR. REINFORCEMENT WILL BE PAID FOR AT THE CONTRACT UNIT PRICE PER POUND FOR REINFORCEMENT BARS. EXPANSION BOLTS, WHEN REQUIRED, WILL BE PAID FOR AT THE CONTRACT UNIT PRICE EACH FOR EXPANSION BOLTS OF THE SIZE INDICATED, WHICH PRICE SHALL INCLUDE FURNISHING, DRILLING HOLES, AND INSTALLING THE EXPANSION BOLTS COMPLETE IN PLACE. THESE BOLTS SHALL EXTEND AT LEAST 8 INCHES INTO THE NEW CONCRETE.

ONCE THE CONSTRUCTION OF THE PRECAST REINFORCED CONCRETE FLARED END SECTIONS ARE COMPLETED, BACK FILL IS REQUIRED AROUND THE END SECTIONS TO HAVE CONSISTENT GRADE WHICH MATCHES THE SURROUNDING CONDITIONS. THIS WORK SHALL BE APPROVED BY THE ENGINEER.

THE CONTRACTOR MAY BE REQUIRED TO REMOVE BRUSH AND TREES TO CONSTRUCT THE P.R.C.F.E.S EXTENSIONS. THE PRICE SHALL BE INCLUDED IN THE PRICE PER EACH FOR PRECAST REINFORCED CONCRETE FLARED END SECTIONS OF THE TYPE SPECIFIED.



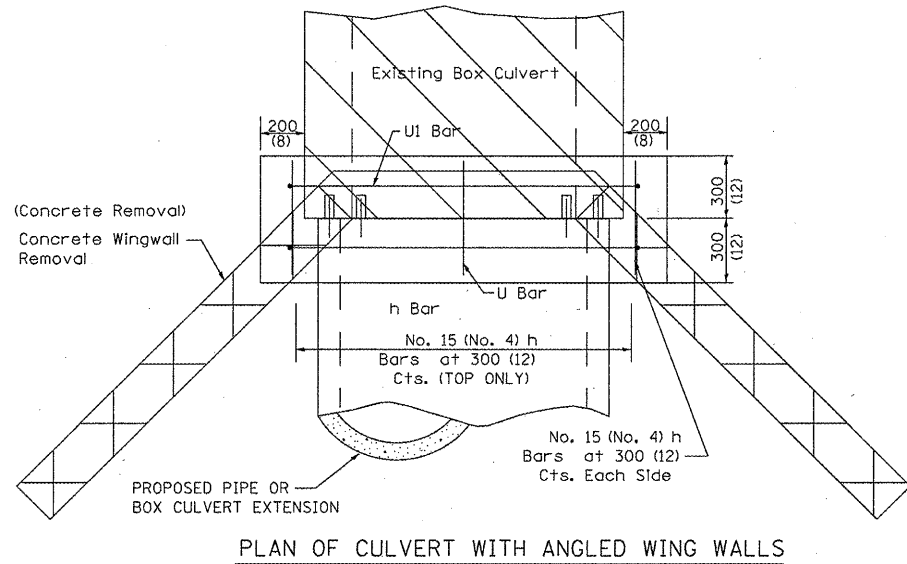
PLAN OF CULVERT WITH STRAIGHT HEADWALL



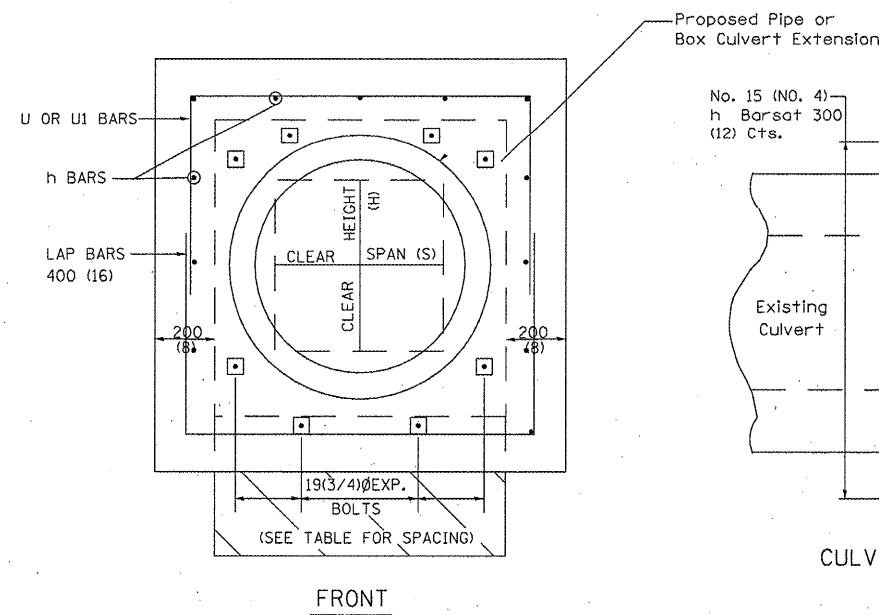
PLACEMENT DETAILS FOR EXPANSION BOLTS

H OR S	NUMBER OF EXPANSION BOLTS REQUIRED PER SIDE			
	EXTENSIONS < 4.57m (15')		EXTENSIONS > 4.57m (15')	
	NUMBER	SPACING	NUMBER	SPACING
600 (24)	*		*	
750 (30)	2	450 (18)	2	450 (18)
900 (36)	2	600 (24)	2	600 (24)
1200 (48)	3	450 (18)	3	450 (18)
1500 (60)	4	400 (16)	3	600 (24)
1800 (72)	5	375 (15)	4	500 (20)
2100 (84)	5	450 (18)	4	600 (24)
2400 (96)	6	375 (15)	5	525 (21)
2700 (108)	6	475 (19)	5	600 (24)
3000 (120)	7	450 (18)	6	525 (21)
3300 (132)	8	425 (17)	6	600 (24)
3600 (144)	8	475 (19)	7	550 (22)

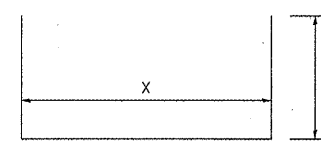
* MINIMUM ONE PER SIDE



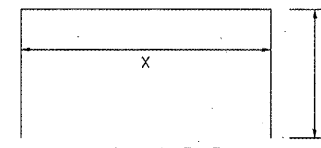
PLAN OF CULVERT WITH ANGLED WING WALLS



CULVERT CONNECTION WITHOUT EXISTING HEADWALL



#4 U BAR



#4 U1 BAR

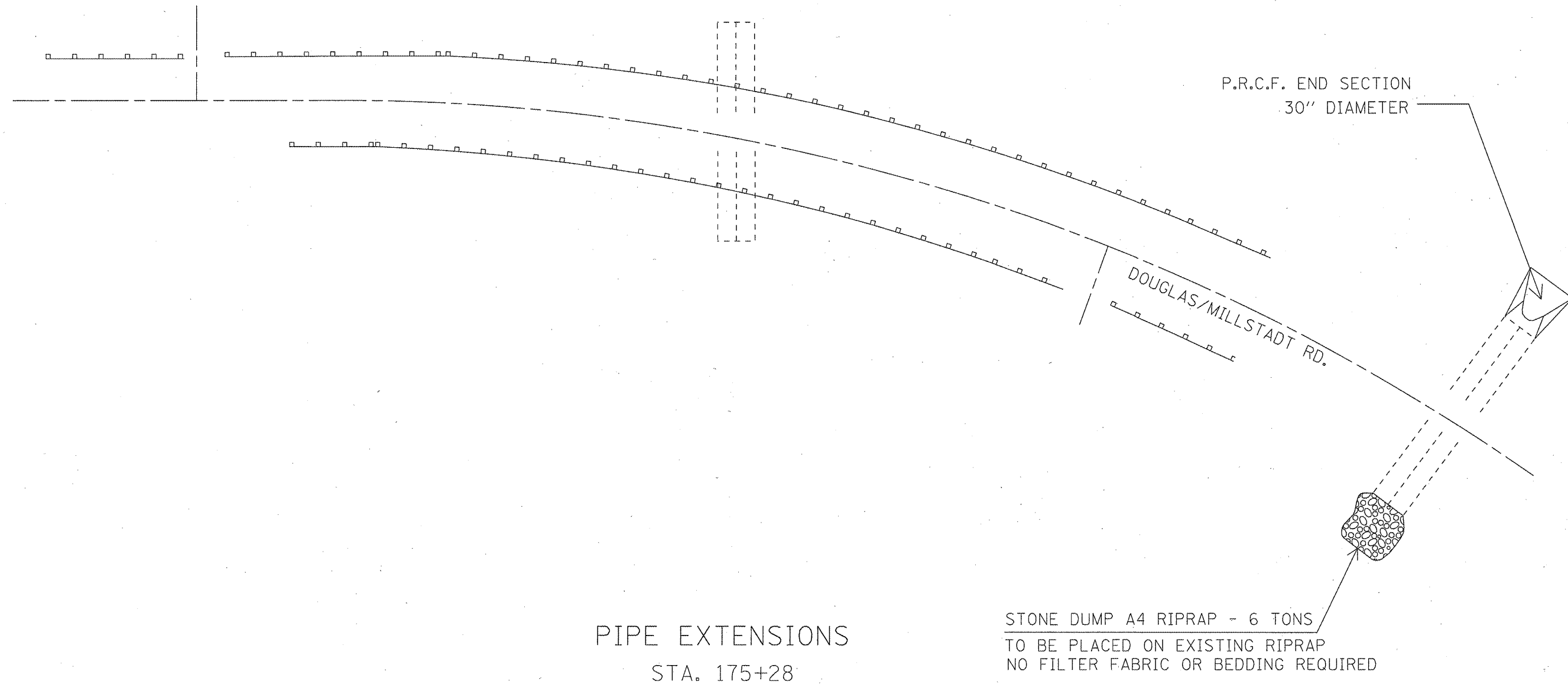
FILE NAME =	USER NAME = #USER#	DESIGNED - ---	REVISED - ---
#FILE#		DRAWN - ---	REVISED - ---
	PLOT SCALE = #SCALE#	CHECKED - ---	REVISED - ---
	PLOT DATE = #DATE#	DATE - ---	REVISED - ---

STATE OF ILLINOIS
DEPARTMENT OF TRANSPORTATION

PIPE EXTENSION DETAIL

SCALE: _____ SHEET NO. ___ OF ___ SHEETS STA. _____ TO STA. _____

F.A.S. RTE.	SECTION	COUNTY	TOTAL SHEETS	SHEET NO.
840	233RS	ST. CLAIR	31	20
FED. ROAD DIST. NO. _____ ILLINOIS FED. AID PROJECT			CONTRACT NO. 76D67	

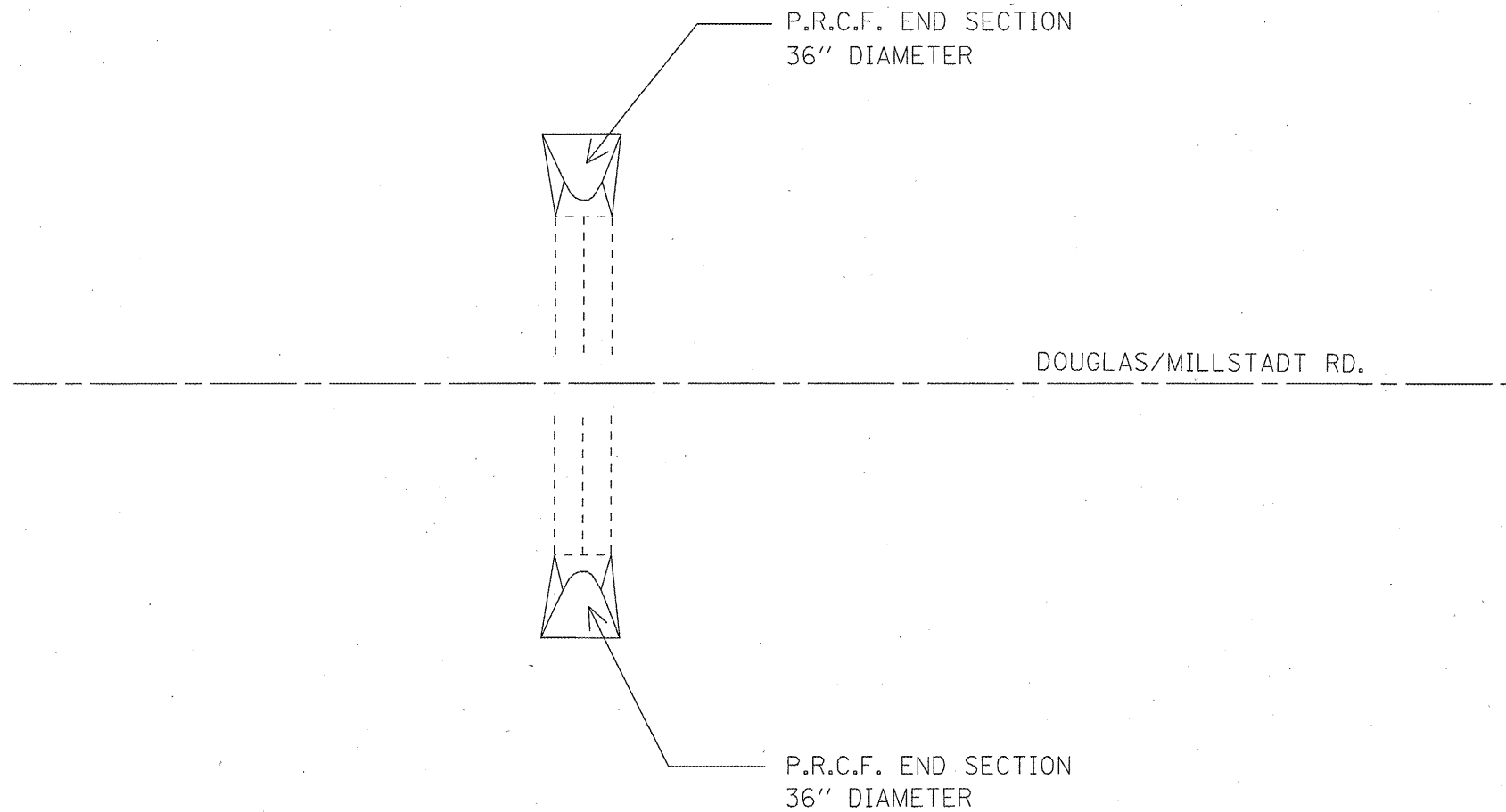


PIPE EXTENSIONS
STA. 175+28

STONE DUMP A4 RIPRAP - 6 TONS
TO BE PLACED ON EXISTING RIPRAP
NO FILTER FABRIC OR BEDDING REQUIRED

NOT TO SCALE

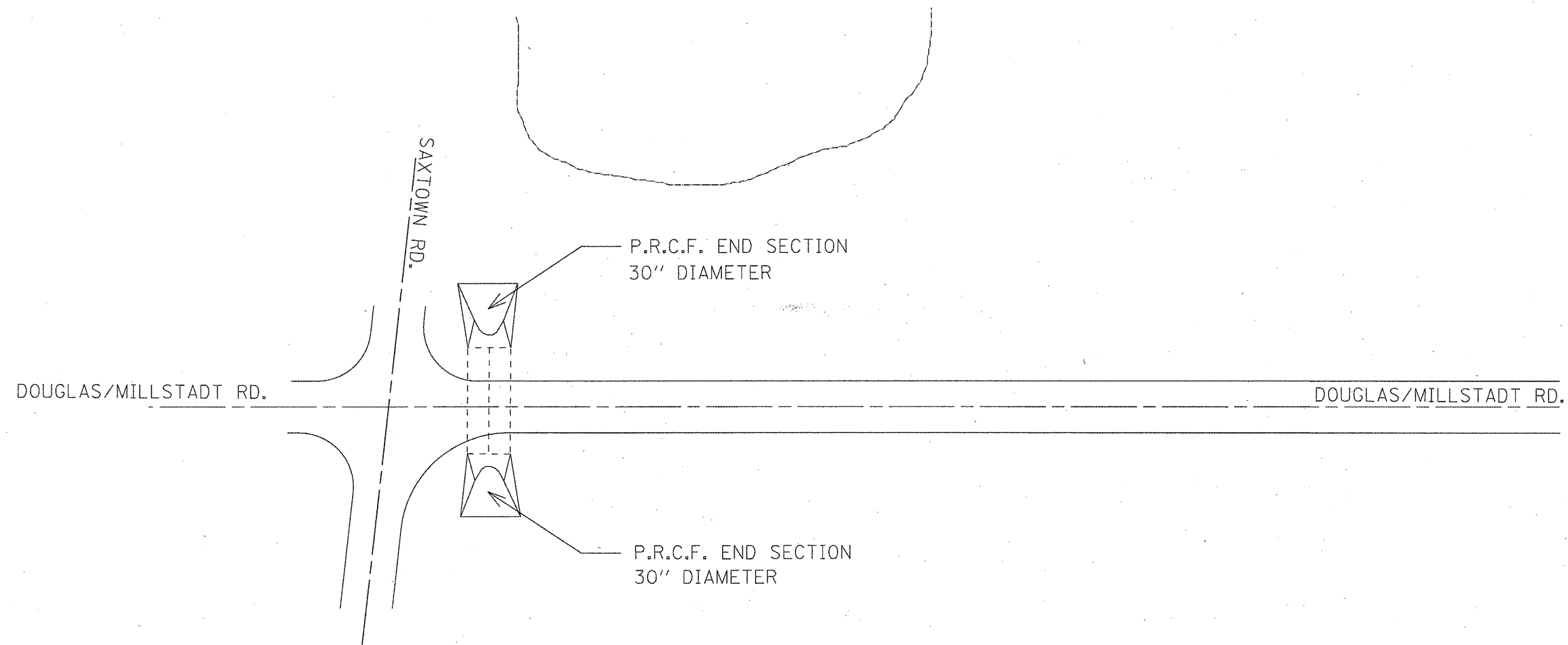
FILE NAME =	USER NAME = #USER#	DESIGNED -	REVISED -	STATE OF ILLINOIS DEPARTMENT OF TRANSPORTATION	PIPE EXTENSION DETAIL	F.A.S. RTE.	SECTION	COUNTY	TOTAL SHEETS	SHEET NO.	
#FILEL#		DRAWN -	REVISED -			B40	233RS	ST. CLAIR	31	21	
		CHECKED -	REVISED -			CONTRACT NO. 76D67					
		DATE -	REVISED -			ILLINOIS FED. AID PROJECT					
				SCALE: _____ SHEET NO. ___ OF ___ SHEETS STA. _____ TO STA. _____							



PIPE EXTENSIONS
STA. 180+66.4

NOT TO SCALE

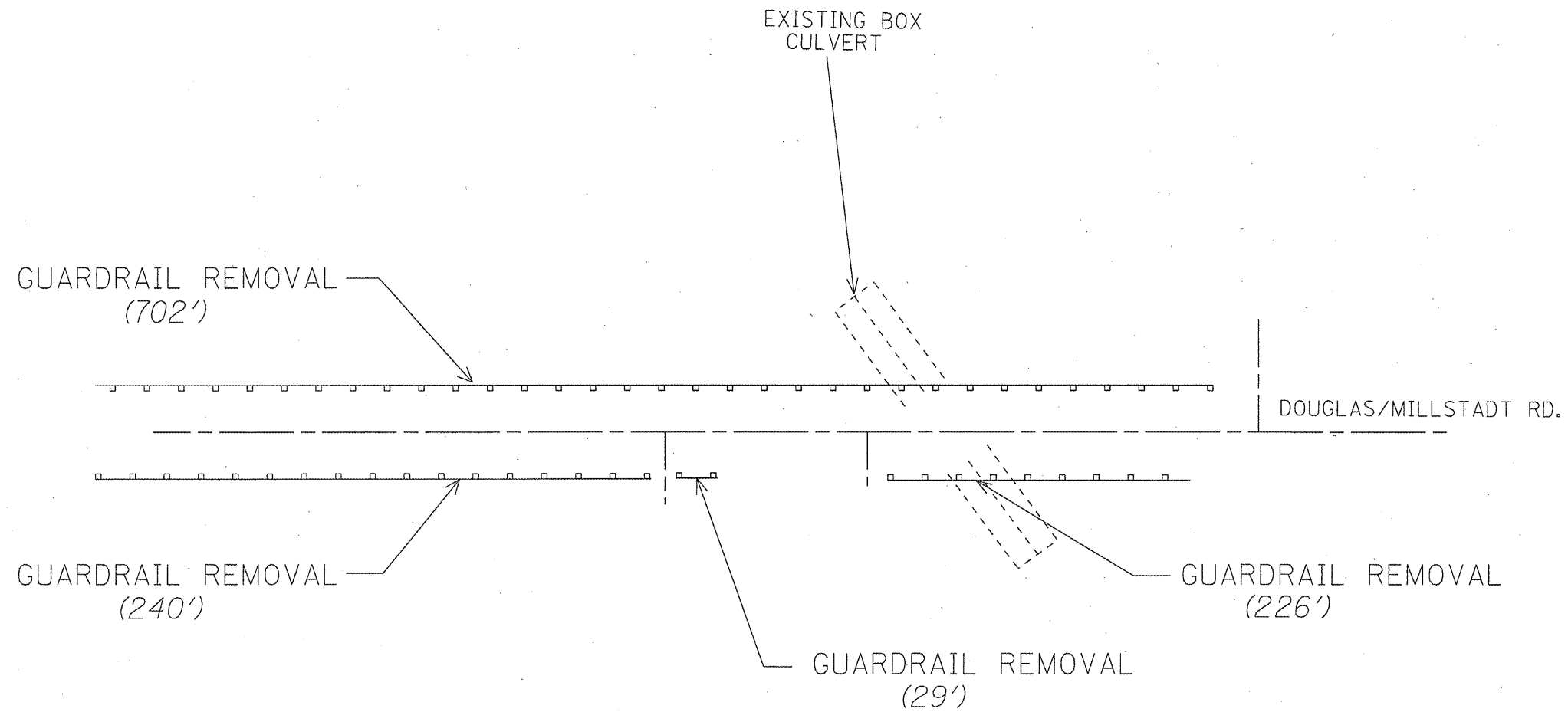
FILE NAME =	USER NAME = *USER*	DESIGNED - ---	REVISED - ---	STATE OF ILLINOIS DEPARTMENT OF TRANSPORTATION	PIPE EXTENSION DETAIL		F.A.S. RTE.	SECTION	COUNTY	TOTAL SHEETS	SHEET NO.	
FILEL		DRAWN - ---	REVISED - ---		SCALE: _____	SHEET NO. ___ OF ___ SHEETS	STA. _____ TO STA. _____	840	233RS	ST. CLAIR	31	22
		PLOT SCALE = *SCALE*	REVISED - ---					FED. ROAD DIST. NO. - [ILLINOIS] FED. AID PROJECT				
		PLOT DATE = *DATE*	REVISED - ---									



PIPE EXTENSIONS
STA. 199+17

NOT TO SCALE

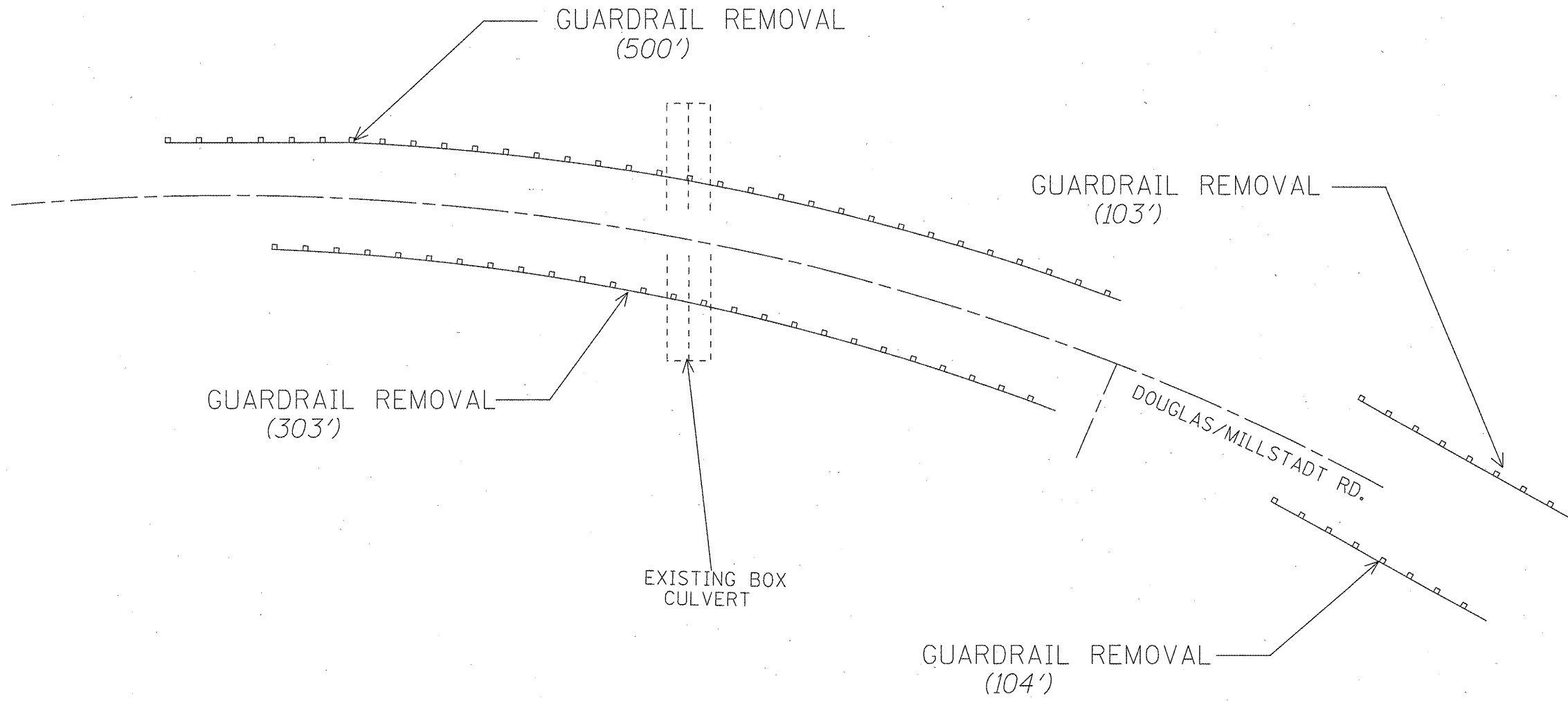
FILE NAME = #FILE#	USER NAME = #USER#	DESIGNED - ---	REVISED - ---	STATE OF ILLINOIS DEPARTMENT OF TRANSPORTATION	PIPE EXTENSION DETAIL	F.A.S. RTE.	SECTION	COUNTY	TOTAL SHEETS	SHEET NO.
	PLOT SCALE = #SCALE#	DRAWN - ---	REVISED - ---			840	233RS	ST. CLAIR	31	23
	PLOT DATE = #DATE#	CHECKED - ---	REVISED - ---			FED. ROAD DIST. NO. - ILLINOIS FED. AID PROJECT		CONTRACT NO. 76067		
		DATE - ---	REVISED - ---	SCALE: _____ SHEET NO. ___ OF ___ SHEETS STA. _____ TO STA. _____						



GUARDRAIL REMOVAL
 STA. 127+84.4 TO STA. 130+24.8 (RT)
 STA. 127+84.4 TO STA. 134+86.8 (LT)
 STA. 131+01.6 TO STA. 131+30.6 (RT)
 STA. 133+12.8 TO STA. 135+38.8 (RT)

NOT TO SCALE

FILE NAME = #FILE#	USER NAME = #USER#	DESIGNED - ---	REVISED - ---	STATE OF ILLINOIS DEPARTMENT OF TRANSPORTATION	GUARDRAIL DETAIL		F.A.S. RTE.	SECTION	COUNTY	TOTAL SHEETS	SHEET NO.
	PLOT SCALE = #SCALE#	DRAWN - ---	REVISED - ---		840	233RS	ST. CLAIR	31	24		
	PLOT DATE = #DATE#	CHECKED - ---	REVISED - ---		SCALE: _____ SHEET NO. ___ OF ___ SHEETS STA. _____ TO STA. _____		CONTRACT NO. 76D67		FED. ROAD DIST. NO. _____ ILLINOIS FED. AID PROJECT		
	DATE - -----	REVISED - ---									

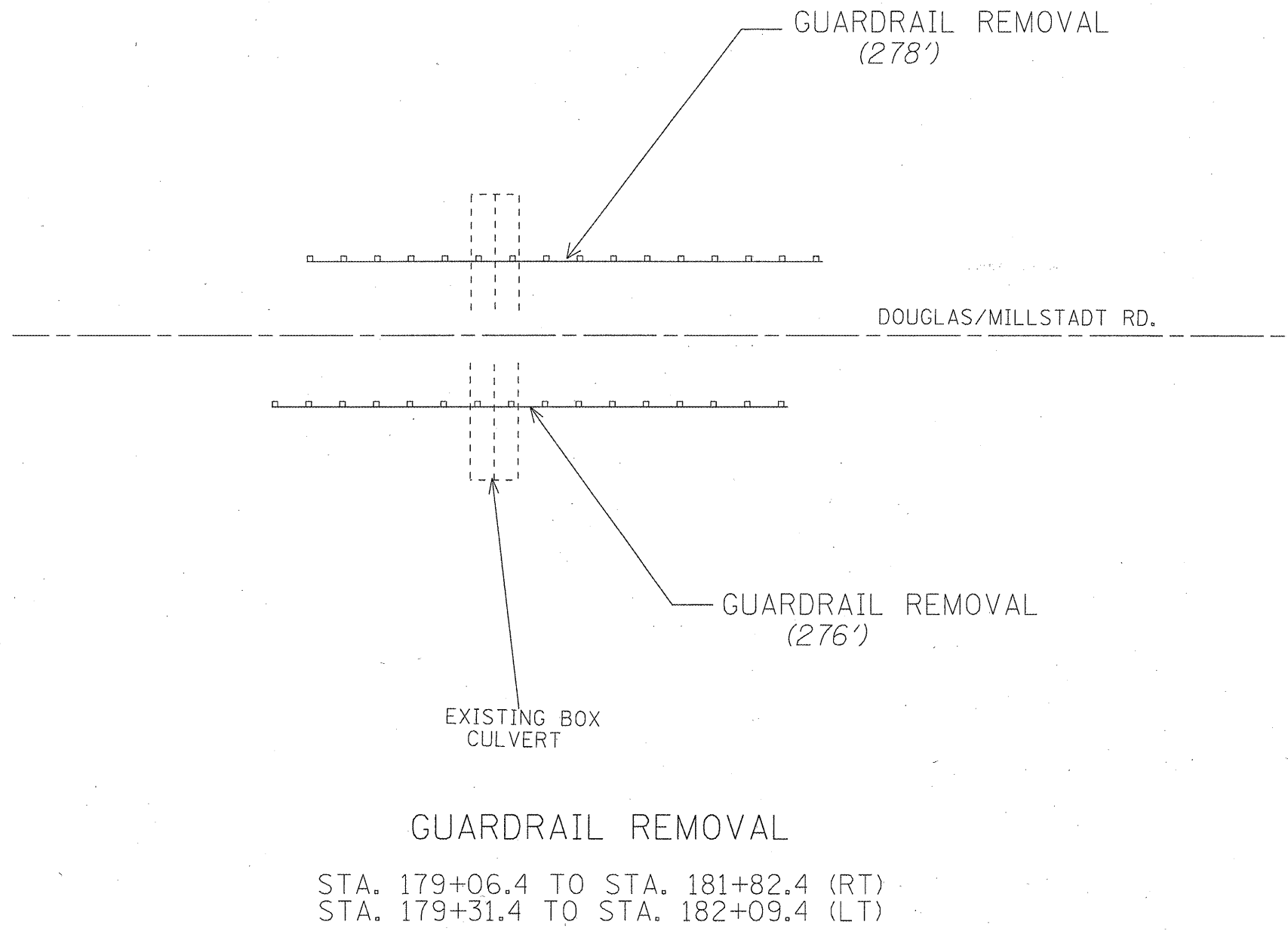


GUARDRAIL REMOVAL

STA. 166+92 TO STA. 171+92 (LT)
 STA. 168+74 TO STA. 171+77 (RT)
 STA. 174+68 TO STA. 175+71 (LT)
 STA. 174+34 TO STA. 175+38 (RT)

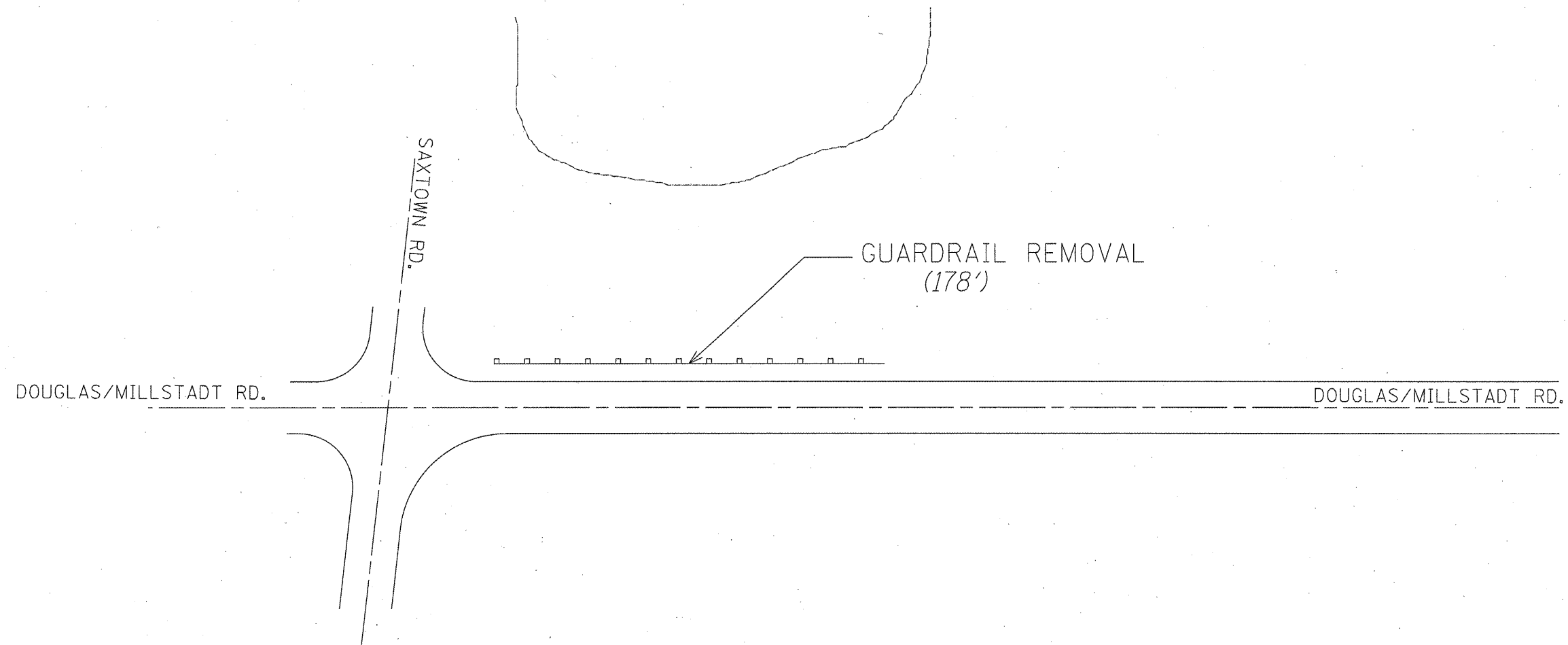
NOT TO SCALE

FILE NAME =	USER NAME = #USER#	DESIGNED -	REVISED -	STATE OF ILLINOIS DEPARTMENT OF TRANSPORTATION	GUARDRAIL DETAIL	F.A.S. RTE.	SECTION	COUNTY	TOTAL SHEETS	SHEET NO.	
#FILE#		DRAWN -	REVISED -			840	233RS	ST. CLAIR	31	25	
		CHECKED -	REVISED -			SCALE: _____ SHEET NO. ___ OF ___ SHEETS STA. _____ TO STA. _____		FED. ROAD DIST. NO. _____ ILLINOIS FED. AID PROJECT			
		DATE -	REVISED -								



NOT TO SCALE

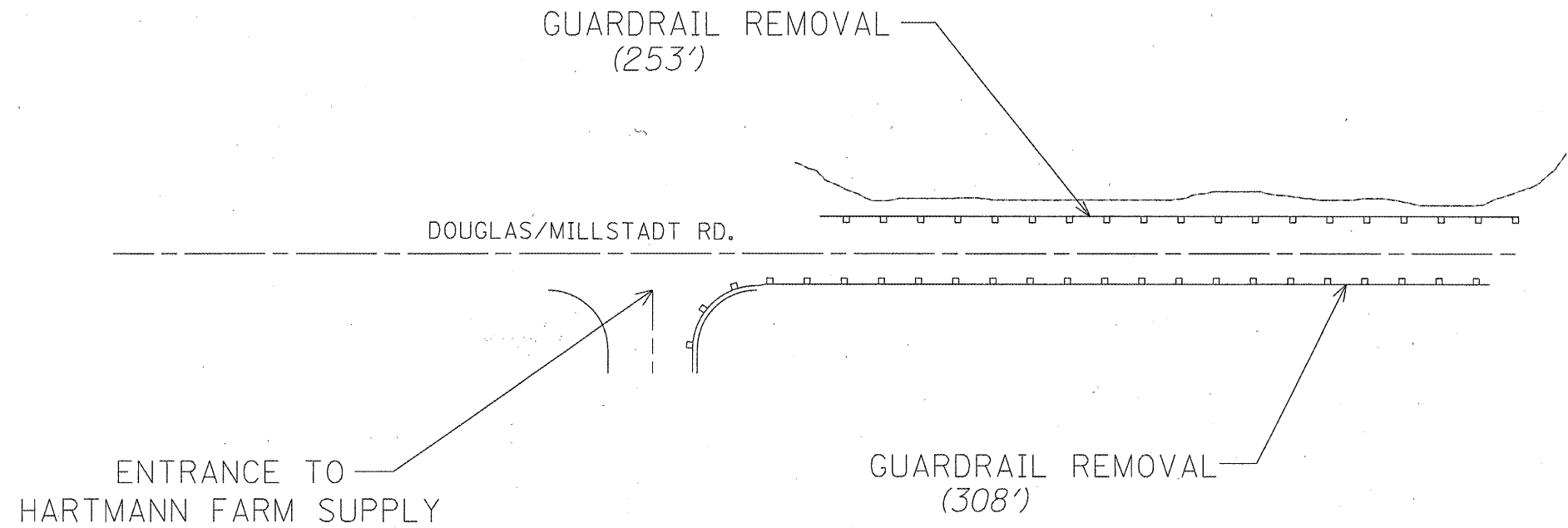
FILE NAME = #FILEL#	USER NAME = #USER#	DESIGNED - ---	REVISED - ---	STATE OF ILLINOIS DEPARTMENT OF TRANSPORTATION	GUARDRAIL DETAIL	F.A.S. RTE.	SECTION	COUNTY	TOTAL SHEETS	SHEET NO.	
	PLOT SCALE = #SCALE#	CHECKED - ---	REVISED - ---			840	233RS	ST. CLAIR	31	26	
	PLOT DATE = #DATE#	DATE - ---	REVISED - ---			SCALE: _____ SHEET NO. ___ OF ___ SHEETS STA. _____ TO STA. _____		FED. ROAD DIST. NO. _____ [ILLINOIS] FED. AID PROJECT		CONTRACT NO. 76D67	



GUARDRAIL REMOVAL
 STA. 199+12.8 TO STA. 200+90.8 (LT)

NOT TO SCALE

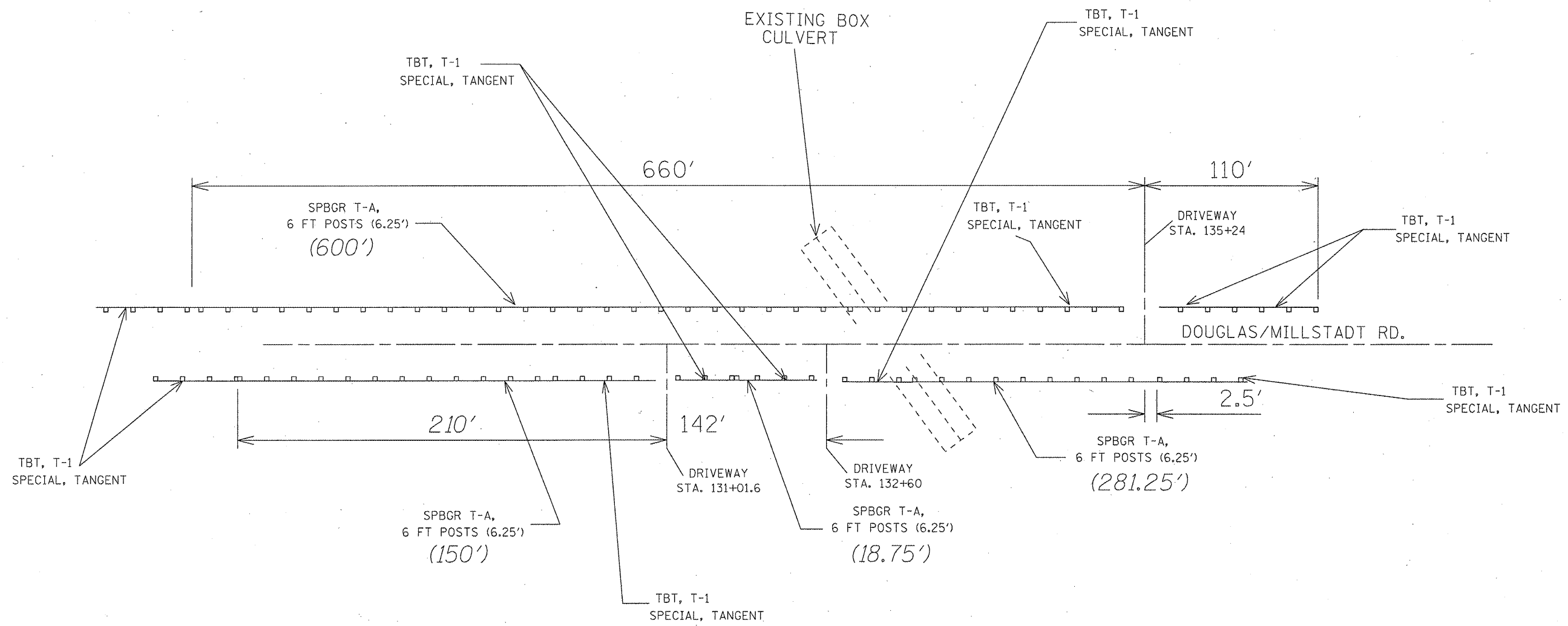
FILE NAME = #FILE#	USER NAME = #USER#	DESIGNED - ---	REVISED - ---	STATE OF ILLINOIS DEPARTMENT OF TRANSPORTATION	GUARDRAIL DETAIL	F.A.S. RTE. 840	SECTION 233RS	COUNTY ST. CLAIR	TOTAL SHEETS 31	SHEET NO. 27	
	PLOT SCALE = #SCALE#	CHECKED - ---	REVISED - ---			SCALE: _____	SHEET NO. ___ OF ___ SHEETS	STA. _____ TO STA. _____	FED. ROAD DIST. NO. _ (ILLINOIS) FED. AID PROJECT		
	PLOT DATE = #DATE#	DATE - _____	REVISED - ---								



GUARDRAIL REMOVAL
 STA. 208+10.4 TO STA. 211+18.4 (RT)
 STA. 209+16.0 TO STA. 211+69.0 (LT)

NOT TO SCALE

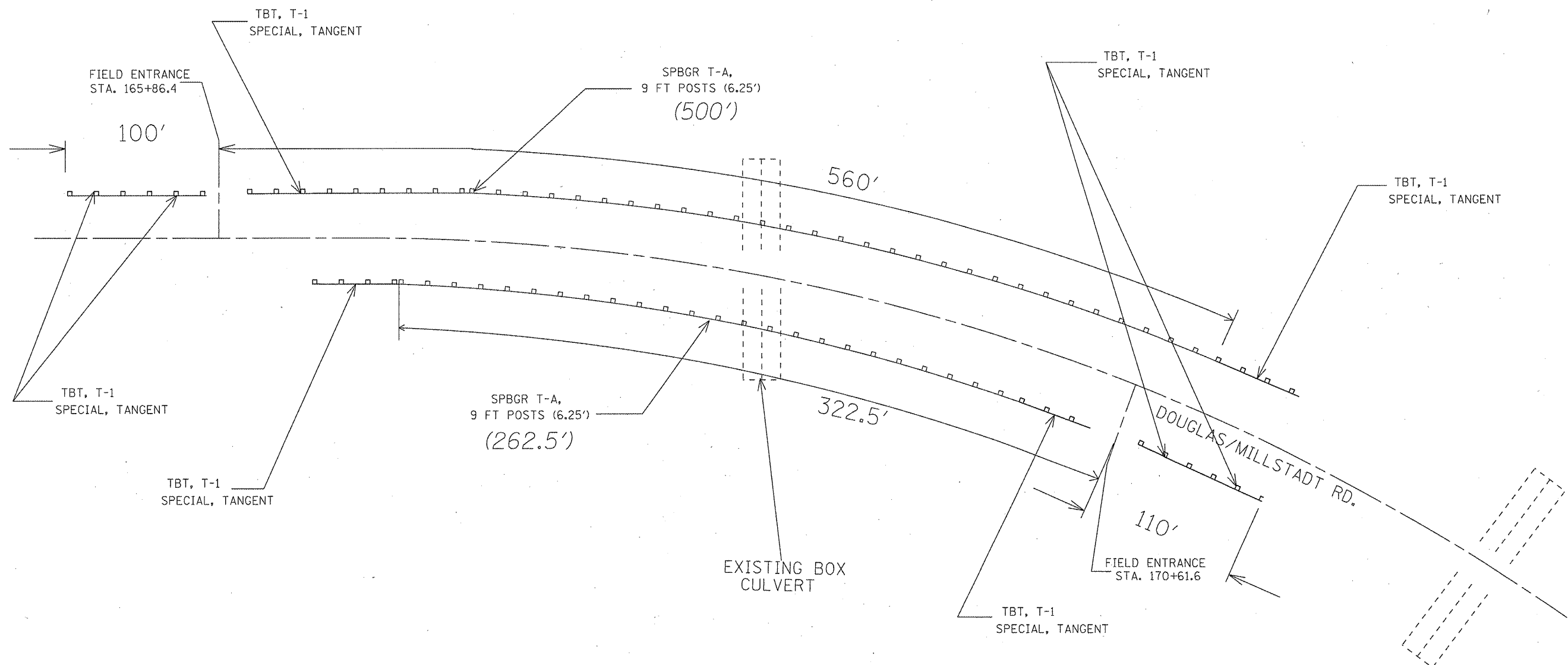
FILE NAME = #FILEL*	USER NAME = #USER*	DESIGNED - ---	REVISED - ---	STATE OF ILLINOIS DEPARTMENT OF TRANSPORTATION	GUARDRAIL DETAIL	F.A.S. RTE. 840	SECTION 233RS	COUNTY ST. CLAIR	TOTAL SHEETS 31	SHEET NO. 28
	PLOT SCALE = #SCALE*	CHECKED - ---	REVISED - ---			SCALE: _____	SHEET NO. ___ OF ___ SHEETS	STA. _____ TO STA. _____	CONTRACT NO. 76D67	
	PLOT DATE = #DATE*	DATE - _____	REVISED - ---			FED. ROAD DIST. NO. _____		ILLINOIS FED. AID PROJECT		



GUARDRAIL PLACEMENT
 STA. 128+91 TO STA. 130+41 (RT)
 STA. 128+64 TO STA. 134+64 (LT)
 STA. 131+81.3 TO STA. 132+00 (RT)
 STA. 133+20 TO STA. 136+01.3 (RT)

NOT TO SCALE

FILE NAME =	USER NAME = #USER#	DESIGNED - ---	REVISED - ---	STATE OF ILLINOIS DEPARTMENT OF TRANSPORTATION	GUARDRAIL DETAIL	F.A.S. RTE.	SECTION	COUNTY	TOTAL SHEETS	SHEET NO.	
#FILE#		DRAWN - ---	REVISED - ---			840	233RS	ST. CLAIR	31	29	
		CHECKED - ---	REVISED - ---			SCALE: _____ SHEET NO. ___ OF ___ SHEETS STA. _____ TO STA. _____		CONTRACT NO. 76D67			
		DATE - -----	REVISED - ---			FED. ROAD DIST. NO. _____ [ILLINOIS] FED. AID PROJECT					

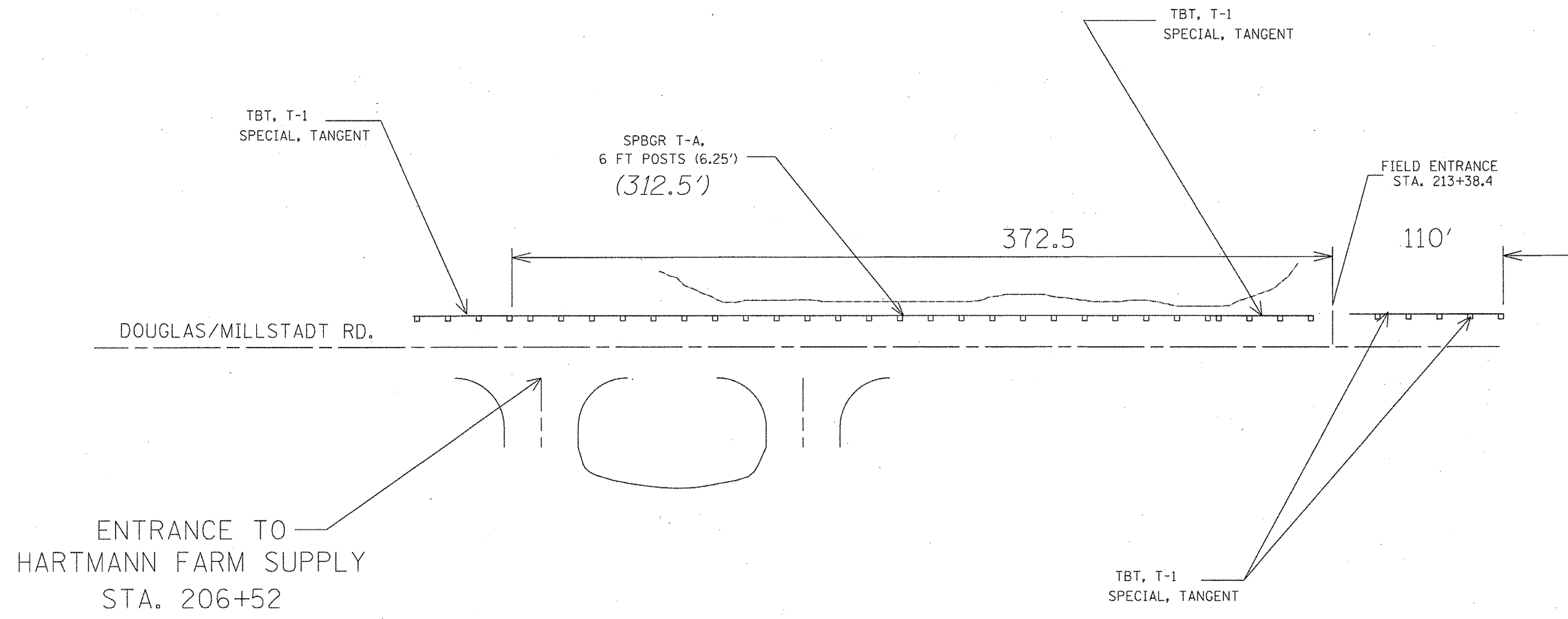


GUARDRAIL PLACEMENT

STA. 167+39.1 TO STA. 170+01.6 (RT)
 STA. 166+33.9 TO STA. 171+33.9 (LT)

NOT TO SCALE

FILE NAME = #FILE#	USER NAME = #USER#	DESIGNED -	REVISED -	STATE OF ILLINOIS DEPARTMENT OF TRANSPORTATION	GUARDRAIL DETAIL		F.A.S. RTE.	SECTION	COUNTY	TOTAL SHEETS	SHEET NO.
	PLOT SCALE = #SCALE#	DRAWN -	REVISED -		840	233RS	ST. CLAIR	31	30		
PLOT DATE = #DATE#	CHECKED -	REVISED -	SCALE: _____		SHEET NO. _____ OF _____ SHEETS	STA. _____ TO STA. _____	CONTRACT NO. 76D67		FED. ROAD DIST. NO. _____ ILLINOIS FED. AID PROJECT		
	DATE -	REVISED -									



GUARDRAIL PLACEMENT
 STA. 209+65.9 TO STA. 212+78.4 (LT)

NOT TO SCALE

FILE NAME = #FILEL#	USER NAME = #USER#	DESIGNED - ---	REVISED - ---	STATE OF ILLINOIS DEPARTMENT OF TRANSPORTATION	GUARDRAIL DETAIL	F.A.S. RTE. 840	SECTION 233RS	COUNTY ST. CLAIR	TOTAL SHEETS 31	SHEET NO. 31			
	PLOT SCALE = #SCALE#	CHECKED - ---	REVISED - ---			SCALE: _____ SHEET NO. ___ OF ___ SHEETS STA. _____ TO STA. _____		FED. ROAD DIST. NO. _____ ILLINOIS FED. AID PROJECT					
	PLOT DATE = #DATE#	DATE - -----	REVISED - ---										
									CONTRACT NO. 76D67				