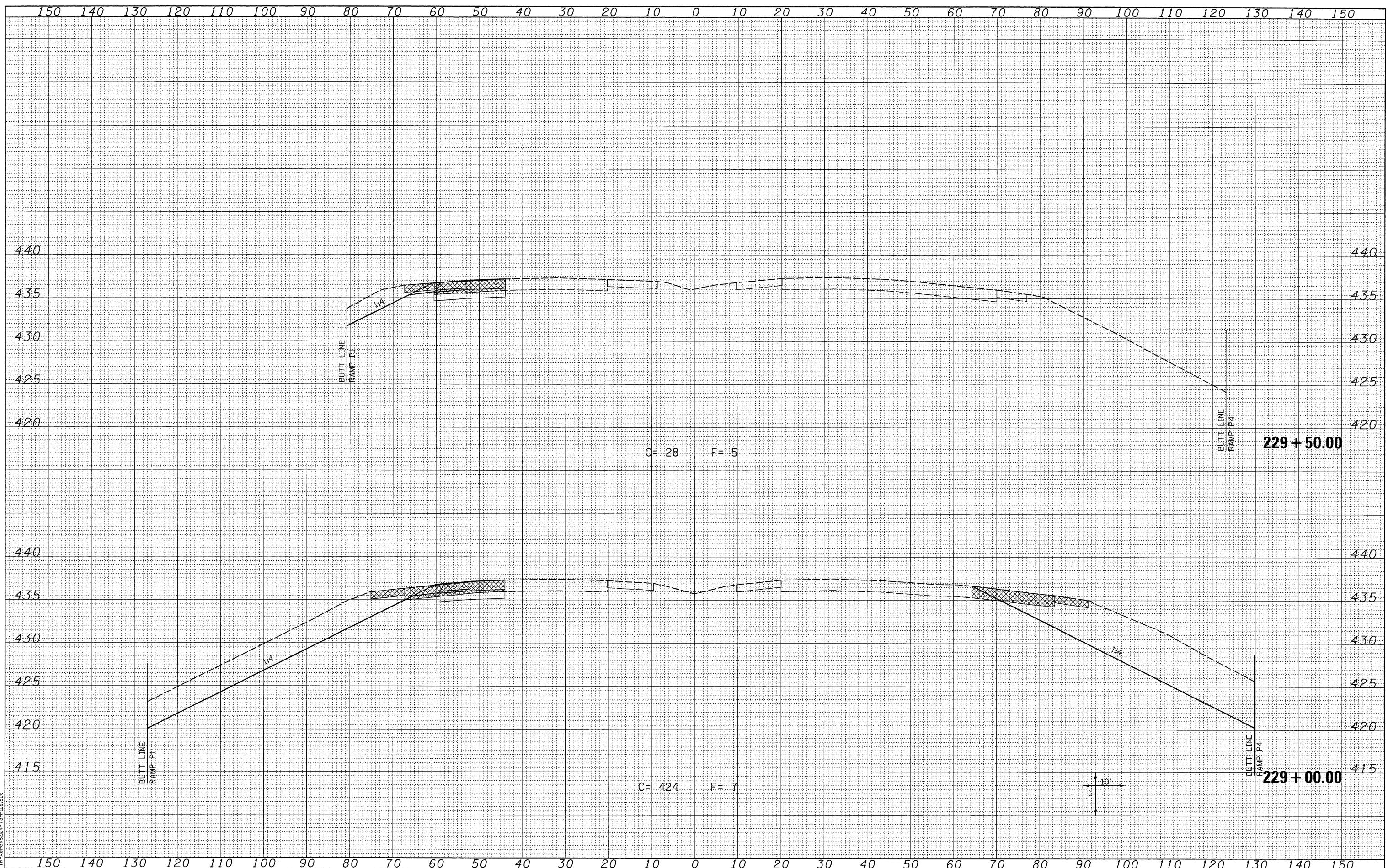


BY	DATE
SURVEYED	
PLOTTED	
TEMPLATE	
NOTE BOOK	
AREAS CHECKED	
NO.	

BY	DATE
ORIGINAL SURVEY	
NOTE BOOK	
TEMPLATE	
AREAS CHECKED	
NO.	



LAST SAVED = 3/13/2010
 PEN TABLE = V8.141
 PLOT DRIVER = TR:Veroc6204-To-File.plt

FILE NAME =
 USER NAME = sdonahue
 DESIGNED -
 DRAWN -
 CHECKED -
 DATE -

DESIGNED -
 DRAWN -
 CHECKED -
 DATE -

REVISIED -
 REVISIED -
 REVISIED -
 REVISIED -

REVISIED -
 REVISIED -
 REVISIED -
 REVISIED -

STATE OF ILLINOIS
 DEPARTMENT OF TRANSPORTATION

HORNER &
 SHIFRIN, INC
 ENGINEERS

CROSS SECTIONS
 PROPOSED I-270
 SCALE: SEE SHT
 SHEET NO. 4 OF 6 SHEETS
 STA. 229+00.00 TO STA. 229+50.00

F.A.I. RTE.	SECTION	COUNTY	TOTAL SHEETS	SHEET NO.
270	60-2RS-3	MADISON	231	149
				CONTRACT NO. 76087
ILLINOIS FED. AID PROJECT				