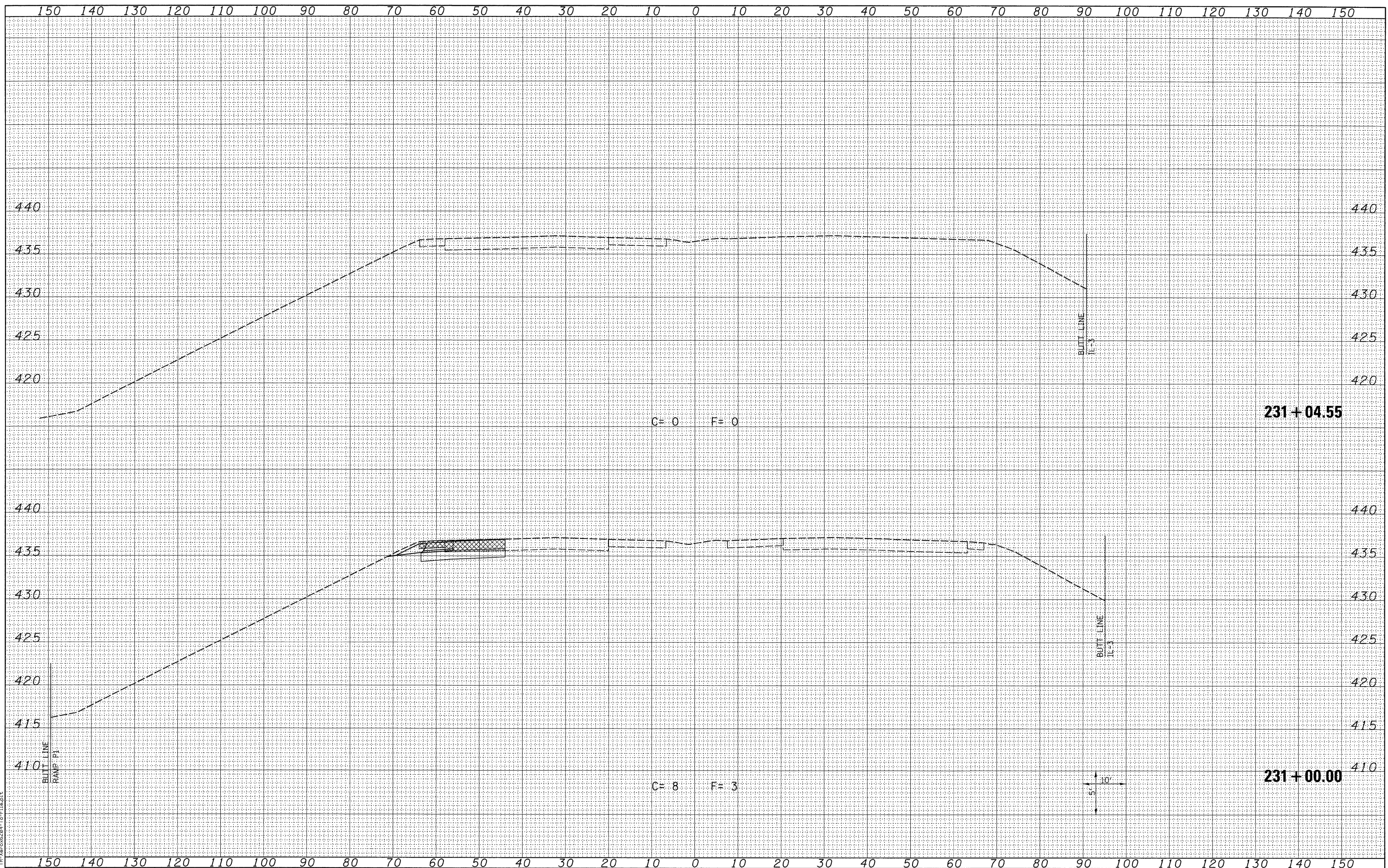


FINAL SURVEY	SURVEYED	BY	DATE
NOTE BOOK	PLOTTED		
NO.	TEMPLATE		
	AREAS CHECKED		

ORIGINAL SURVEY	SURVEYED	BY	DATE
NOTE BOOK	PLOTTED		
NO.	TEMPLATE		
	AREAS CHECKED		



LAST SAVED = 3/13/2010
 PEN TABLE = 18.141
 PLOT DRIVER = TR: Xerox6204; To: File.plt

FILE NAME =
 \\09056600\09056601\cad\1\plans\087_0876087-Sht-X9Sht-1270.dgn

USER NAME = sdonehue	DESIGNED -	REVISIED -
PLOT SCALE = 10.0005' / IN.	DRAWN -	REVISIED -
PLOT DATE = 3/16/2010 4:44:10 PM	CHECKED -	REVISIED -
	DATE -	REVISIED -

STATE OF ILLINOIS
 DEPARTMENT OF TRANSPORTATION



CROSS SECTIONS
 PROPOSED I-270

SCALE: SEE SHT SHEET NO. 6 OF 6 SHEETS STA. 231+00.00 TO STA. 231+04.55

F.A.I. RTE. 270	SECTION 60-2RS-3	COUNTY MADISON	TOTAL SHEETS 231	SHEET NO. 151
				CONTRACT NO. 76D87
ILLINOIS FED. AID PROJECT				