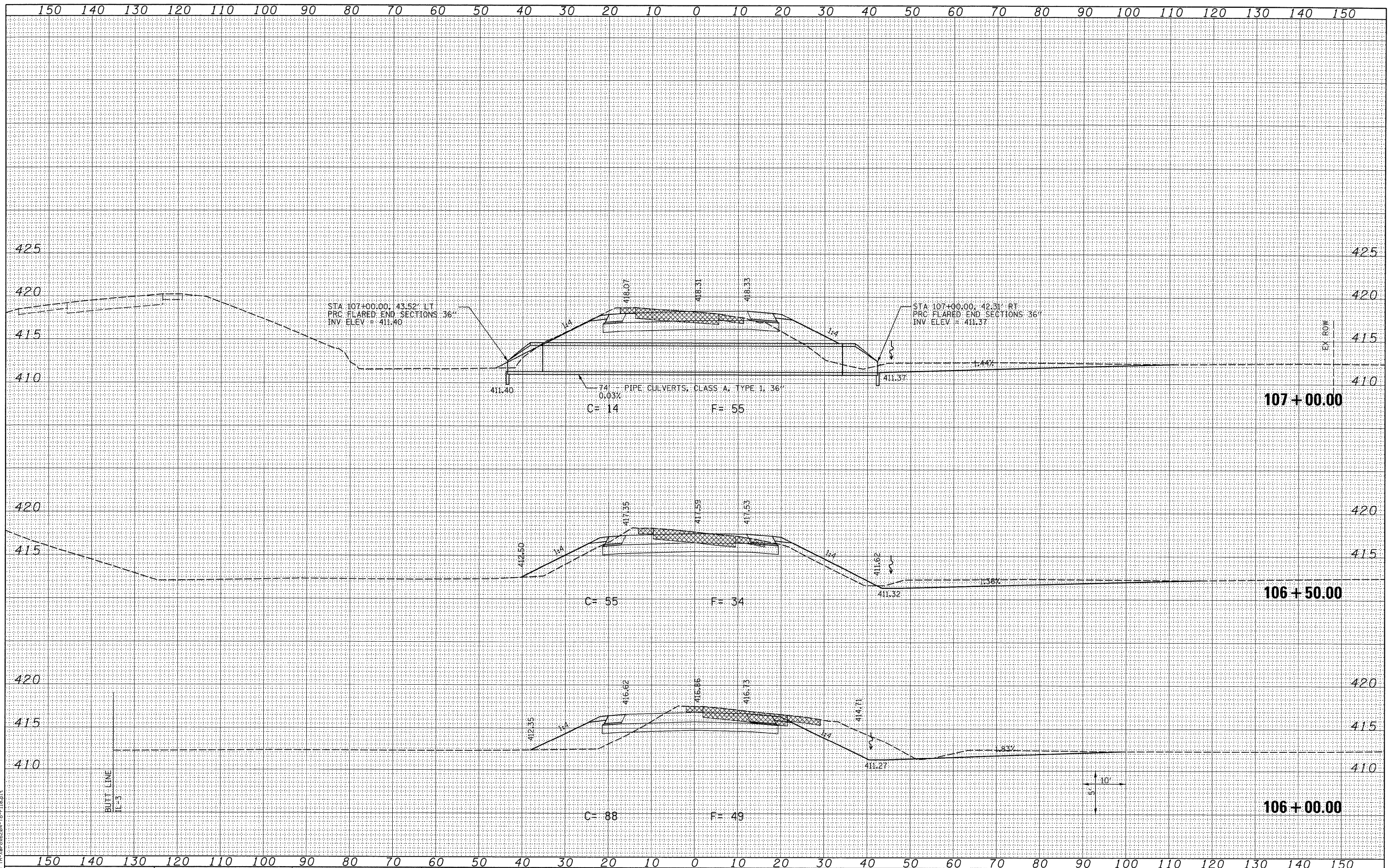


DATE	
BY	
FINAL SURVEY	
SURVEYED	
PLOTTED	
NOTE BOOK	
TEMPLATE	
AREAS CHECKED	
NO.	

DATE	
BY	
ORIGINAL SURVEY	
SURVEYED	
PLOTTED	
NOTE BOOK	
TEMPLATE	
AREAS CHECKED	
NO.	



LAST SAVED = 3/16/2010
 PEN TABLE = VBA31
 PLOT DRIVER = TR:ker6204-To-F:\p1

FILE NAME =	USER NAME = sdonahue
1:\0906600\0906601\cad\1\plans\095_D076D07-Sht-XSSht-RampP8.dgn	DESIGNED -
	DRAWN -
PLOT SCALE = 10.0005' / IN.	CHECKED -
PLOT DATE = 3/16/2010 4:54:41 PM	DATE -
	REVISED -
	REVISED -
	REVISED -

DESIGNED -	REVISED -
DRAWN -	REVISED -
CHECKED -	REVISED -
DATE -	REVISED -

STATE OF ILLINOIS
 DEPARTMENT OF TRANSPORTATION



CROSS SECTIONS
 PROPOSED RAMP P8
 SCALE: SEE SHT SHEET NO. 2 OF 5 SHEETS STA. 106+00.00 TO STA. 107+00.00

F.A.I. RTE.	SECTION	COUNTY	TOTAL SHEETS	SHEET NO.
270	60-2RS-3	MADISON	231	228
				CONTRACT NO. 76087
ILLINOIS FED. AID PROJECT				