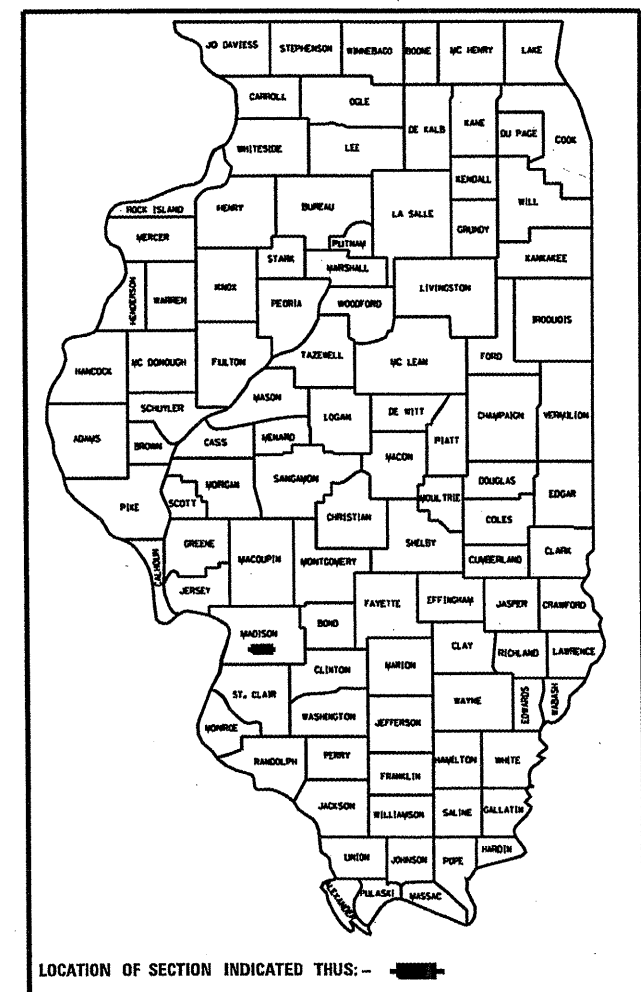


F.A.I. RTE.	SECTION	COUNTY	TOTAL SHEETS	SHEET NO.
255	82-1T-3	MADISON	5	1
		ILLINOIS	CONTRACT NO. 76D90	

D-98-057-10



LOCATION OF SECTION INDICATED THUS: - [Symbol] -

STATE OF ILLINOIS
DEPARTMENT OF TRANSPORTATION
DIVISION OF HIGHWAYS

SUBMITTED March 16 20 10
Mary C. Jamie
DEPUTY DIRECTOR OF HIGHWAYS, REGION ENGINEER

May 7 20 10
Scott E. Stitt P.E. I.E.
ENGINEER OF DESIGN AND ENVIRONMENT

May 7 20 10
Christine M. Lecker
DIRECTOR OF HIGHWAYS, CHIEF ENGINEER

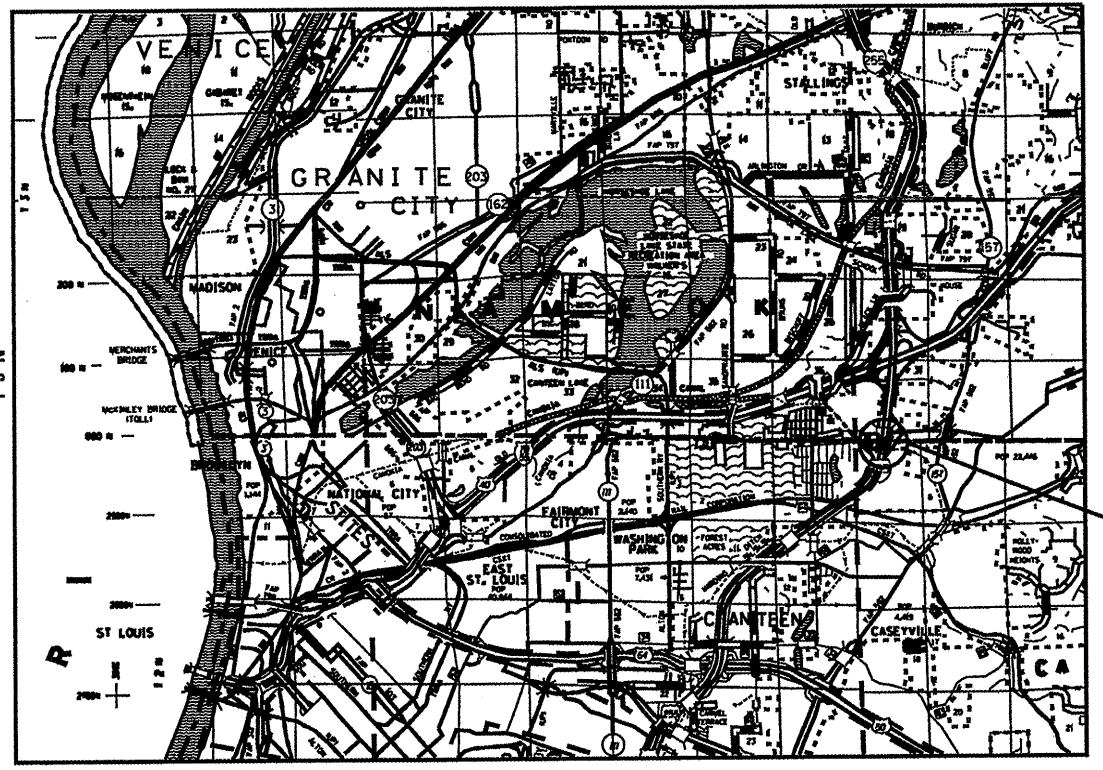
PRINTED BY THE AUTHORITY
OF THE STATE OF ILLINOIS

STATE OF ILLINOIS
DEPARTMENT OF TRANSPORTATION
DIVISION OF HIGHWAYS

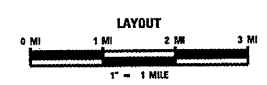
**PROPOSED
HIGHWAY PLANS**

FAI ROUTE 255 (I-255)
SECTION 82-1T-3
GRATE REPLACEMENT
MADISON COUNTY

C-98-071-10

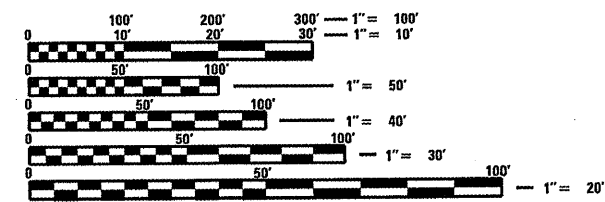


NOT TO SCALE



GROSS LENGTH = x.xx FT. = x.xxx MILE
NET LENGTH = x.xx FT. = x.xxx MILE

- INDEX OF SHEETS
- 1 COVER SHEET, STANDARDS, ADT
 - 2 GENERAL NOTES
 - 3 SUMMARY OF QUANTITIES
 - 4 PLANS
 - 5 PLANS



FULL SIZE PLANS HAVE BEEN PREPARED USING STANDARD ENGINEERING SCALES. REDUCED SIZED PLANS WILL NOT CONFORM TO STANDARD SCALES. IN MAKING MEASUREMENTS ON REDUCED PLANS, THE ABOVE SCALES MAY BE USED.

J.U.L.I.E.
JOINT UTILITY LOCATION INFORMATION FOR EXCAVATION
1-800-892-0123
OR 811

PROJECT ENGINEER: PETE SAWYER (618)346-3275
PROJECT MANAGER: TIM PADGETT (618)346-3325

CONTRACT NO. 76D90

GENERAL NOTES

1) THE CONTRACTOR SHALL VERIFY ALL DIMENSIONS AND CONDITIONS IN THE FIELD PRIOR TO CONSTRUCTION AND ORDERING MATERIALS.

TRAFFIC CONTROL

NO TRAFFIC IS EXPECTED ON THIS PROJECT

COMMITMENTS

NONE

FILE NAME * c:\pe_work\psidot\alford\0175873\0876	USER NAME = alford	DESIGNED -	REVISED -	STATE OF ILLINOIS DEPARTMENT OF TRANSPORTATION	GENERAL NOTES	F.A.I. RTE.	SECTION	COUNTY	TOTAL SHEETS	SHEET NO.
	98-shr-plan.dgn	DRAWN -	REVISED -			255	82-1T-3	MADISON	5	2
PLOT SCALE = 100.0000 ' / IN.	CHECKED -	REVISED -	SCALE: SHEET NO. OF SHEETS STA. TO STA.		CONTRACT NO. 76090					
PLOT DATE = 3/8/2019	DATE -	REVISED -	FED. ROAD DIST. NO. ILLINOIS FED. AID PROJECT							

SUMMARY OF QUANTITIES

SUMMARY OF QUANTITIES			URBAN 100% STATE TOTAL QUANTITIES	LOCATION 1 MADISON 5 FTY - 2A	CONSTRUCTION TYPE CODE	SUMMARY OF QUANTITIES			TOTAL QUANTITIES	CONSTRUCTION TYPE CODE		
CODE NO	ITEM	UNIT				CODE NO	ITEM	UNIT				
67100100	MOBILIZATION	L SUM	1	1								
X0322886	GRATING FOR BOX CULVERT, LOCATION 1	EACH	1	1								

FILE NAME *	USER NAME * aifordb	DESIGNED -	REVISED -	STATE OF ILLINOIS DEPARTMENT OF TRANSPORTATION	SUMMARY OF QUANTITIES			F.A.I. RTE.	SECTION	COUNTY	TOTAL SHEETS	SHEET NO.			
ca\pe_work\psidot\alfordb\d8175873\d876	98-shi-plendgn	DRAWN -	REVISED -		SCALE:	SHEET NO.	OF	SHEETS	STA.	TO STA.	256	82-11-3	MADISON	5	3
	PLOT SCALE = 100.0000 / IN.	CHECKED -	REVISED -		CONTRACT NO. 76090										
	PLOT DATE = 3/9/2018	DATE -	REVISED -		ILLINOIS FED. AID PROJECT										

STATE OF ILLINOIS
DEPARTMENT OF TRANSPORTATION

GENERAL NOTES

Plan dimensions and details relative to existing plans are subject to nominal construction variations. The Contractor shall field verify existing dimensions and details affecting new construction and make necessary approved adjustments prior to construction or ordering of materials. Such variations shall not be cause for additional compensation for a change in scope of the work, however, the Contractor will be paid for the quantity actually furnished at the unit price bid for the work.

The box culvert is an intake for a pump system. All debris shall be removed from on top of the grate, and 10' in front of the grate across the entire channel, prior to removing the existing grates. The contractor shall install temporary grating in front of the existing grate prior to removal. The contractor shall ensure that no debris larger than 4" be allowed to enter the culvert. See special provisions.

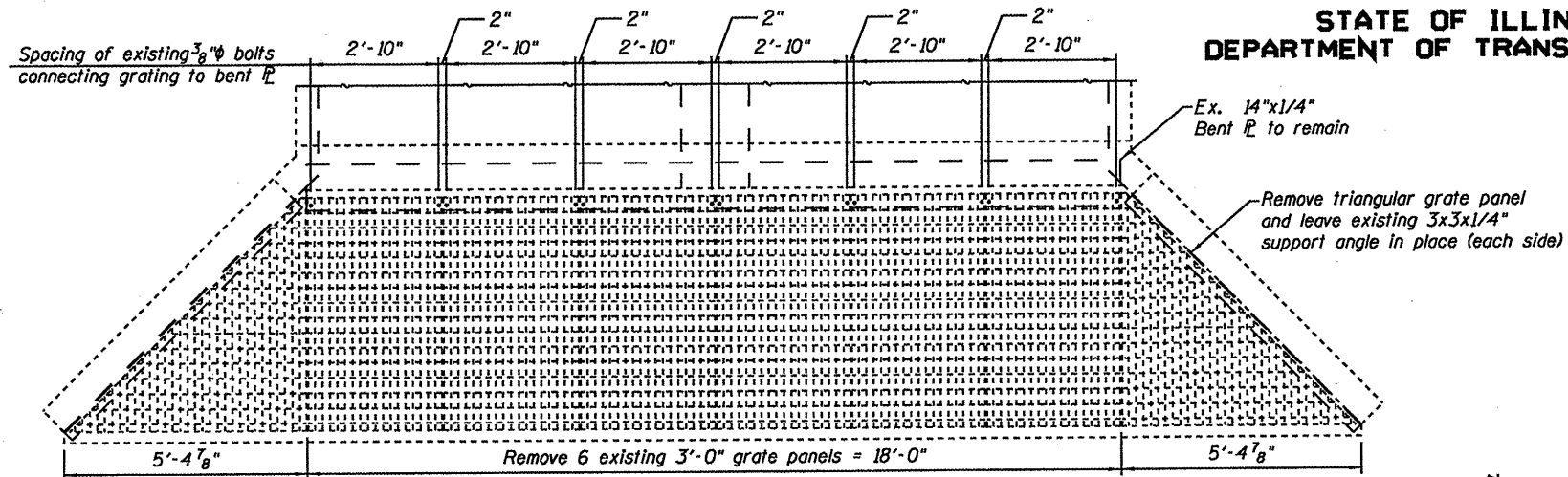
The grating may be supplied as sections no smaller than 3' wide. The sections shall be spliced together with 1/2" φ bolts at 6" maximum cts., as shown on sheet 2.

The grating must be standard steel grating. The contractor may supply different grating sections than shown. The grating must have a section modulus greater than or equal to the grating shown (2.25 cu. in./ft). The grating must also have openings that are between 1 1/2"-2 1/2" wide and 3"-5" long.

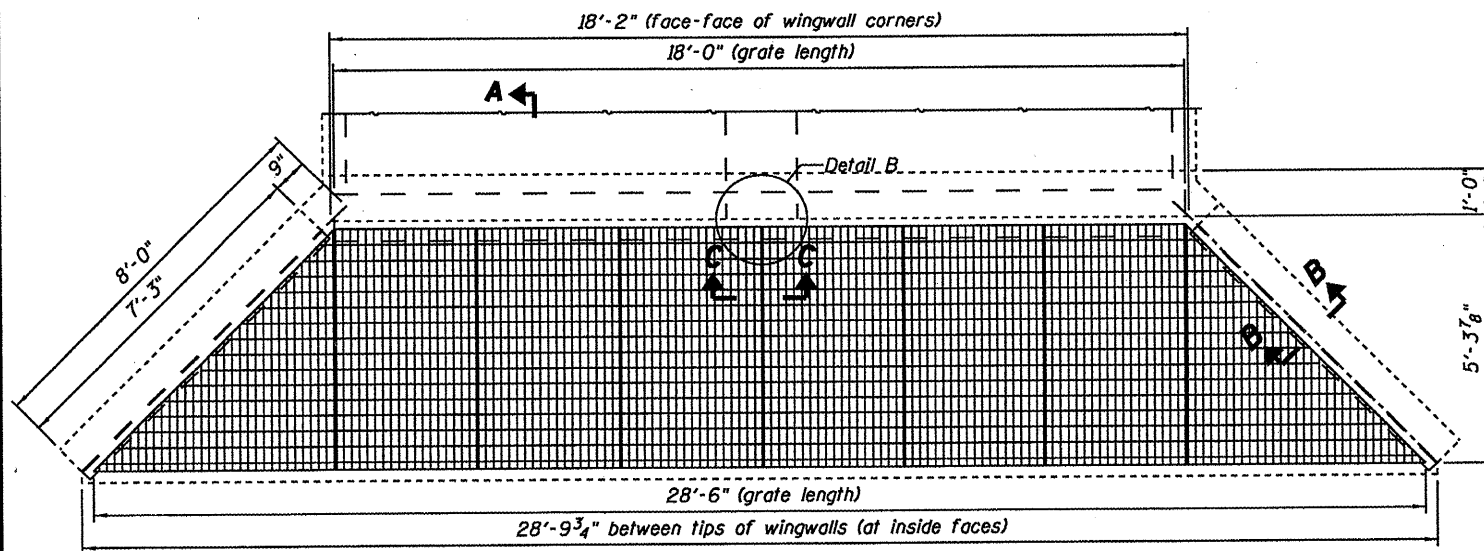
All grating, anchor bolts, nuts, and washers shall be hot-dipped galvanized according to AASHTO M111 or M232 as applicable.

Fasteners shall be AASHTO M164 Type 3, mechanically galvanized bolts. Bolts 1/2" φ, holes 5/8" φ, unless otherwise noted.

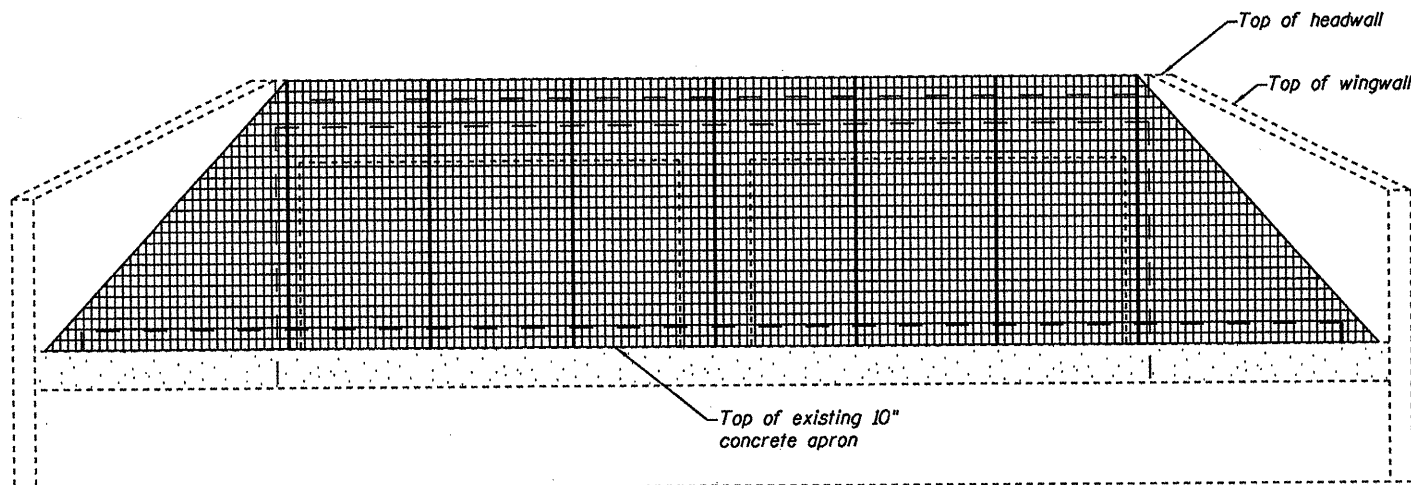
See sheet 2 of 2 for Section B-B and C-C.



EXISTING PLAN

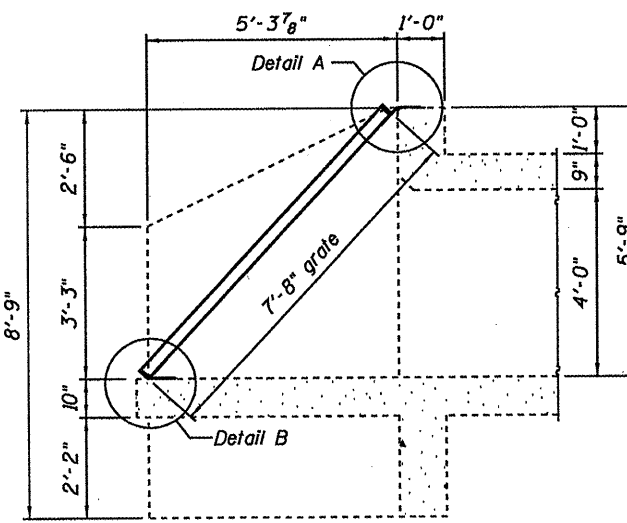


PROPOSED PLAN



ELEVATION

(Looking south into entrance of double box culverts)

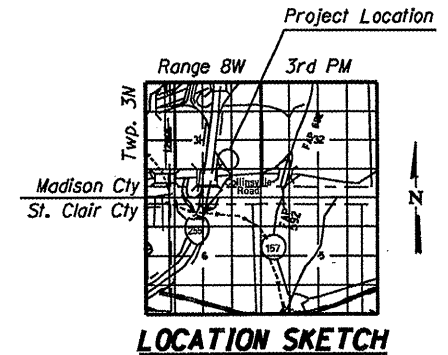


LONGITUDINAL SECTION A-A

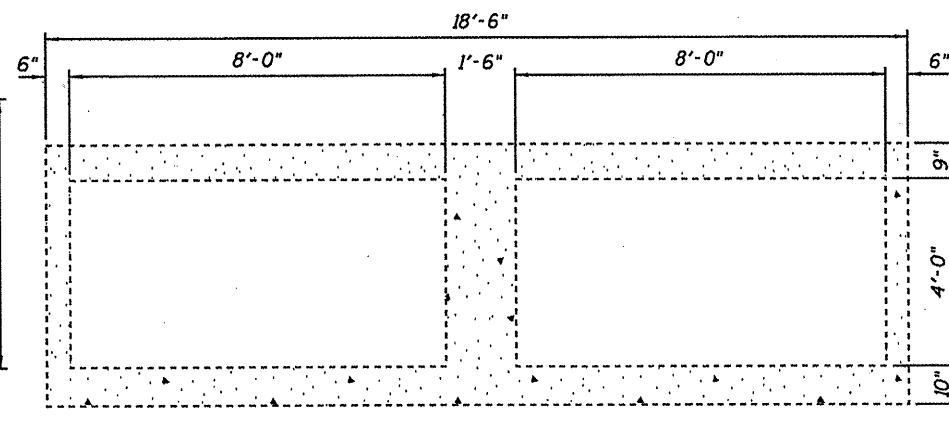
(Looking East)

TOTAL BILL OF MATERIAL

ITEM	UNIT	TOTAL
Mobilization	L. Sum	1
Grating For Box Culvert, Location 1	Each	1



LOCATION SKETCH



BARREL SECTION

PLAN & ELEVATION

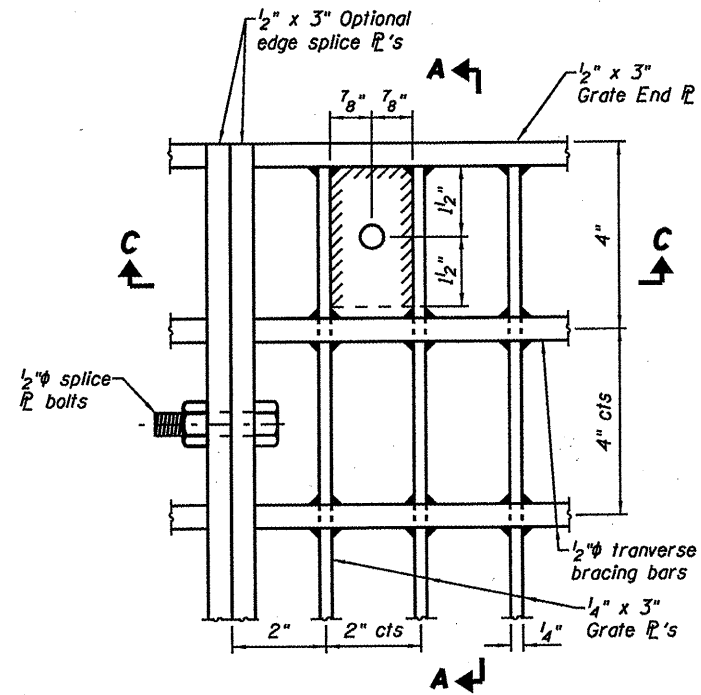
SN 060-2522

DESIGNED	J. Uehle
CHECKED	P. Sawyer
DRAWN	J. Uehle
CHECKED	P. Sawyer

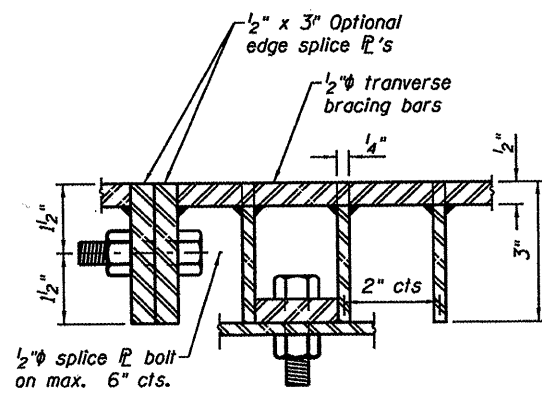
EXAMINED	June 11, 2018
PASSED	ENGINEER OF STRUCTURAL SERVICES
	ENGINEER OF BRIDGES AND STRUCTURES

SHEET NO. 1	F.A.I. RTE.	SECTION	COUNTY	TOTAL SHEETS	SHEET NO.
	255	82-1T-3	MADISON	5	4
2 SHEETS	CONTRACT NO. 76D90			ILLINOIS FED. AID PROJECT	

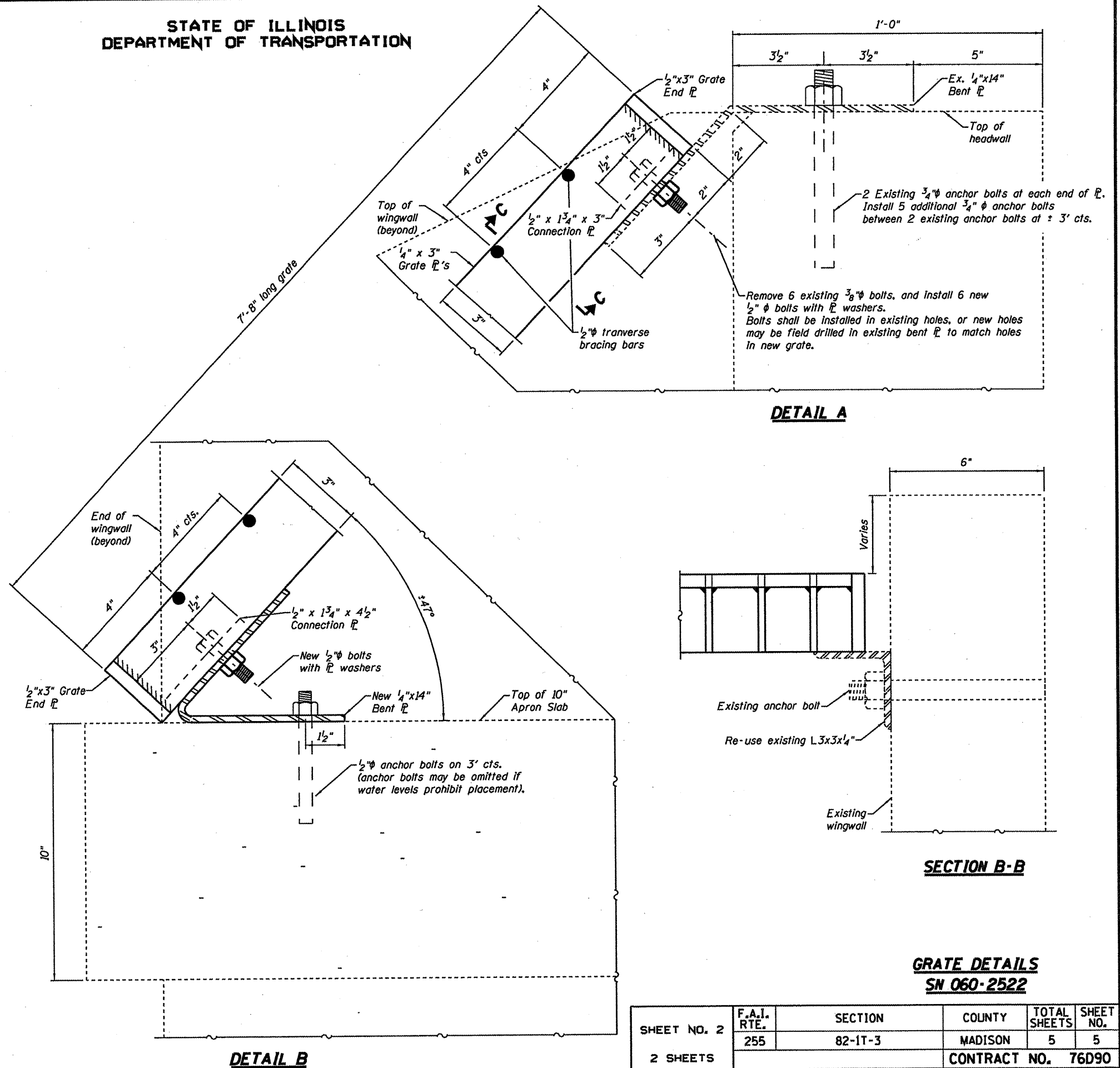
STATE OF ILLINOIS
DEPARTMENT OF TRANSPORTATION



DETAIL D
(Grate Plan View)

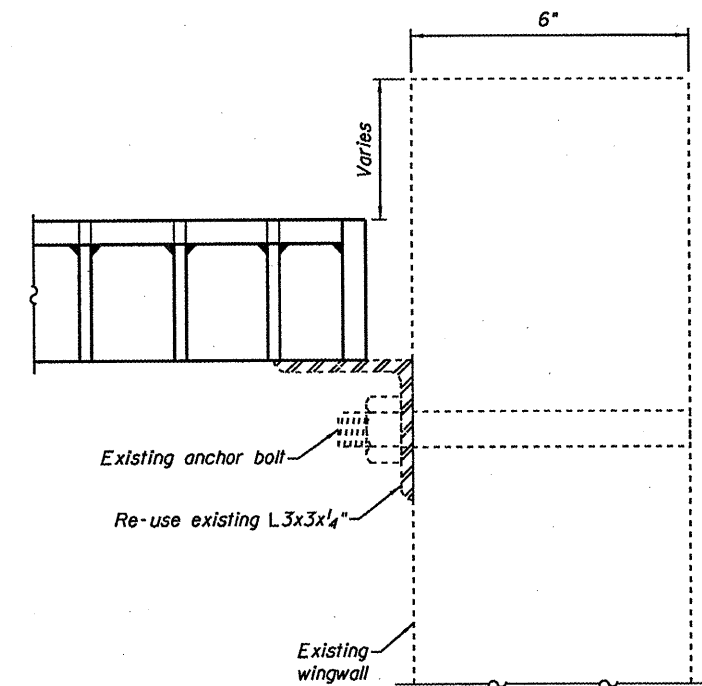


SECTION C-C



DETAIL A

DETAIL B



SECTION B-B

GRATE DETAILS
SN 060-2522

DESIGNED J. Uehle	June 11, 2010
CHECKED P. Sawyer	EXAMINED
DRAWN J. Uehle	ENGINEER OF STRUCTURAL SERVICES
CHECKED P. Sawyer	PASSED
	ENGINEER OF BRIDGES AND STRUCTURES

SHEET NO. 2 2 SHEETS	F.A.I. RTE.	SECTION	COUNTY	TOTAL SHEETS	SHEET NO.
	255	82-1T-3	MADISON	5	5
			CONTRACT NO. 76D90		
ILLINOIS FED. AID PROJECT					