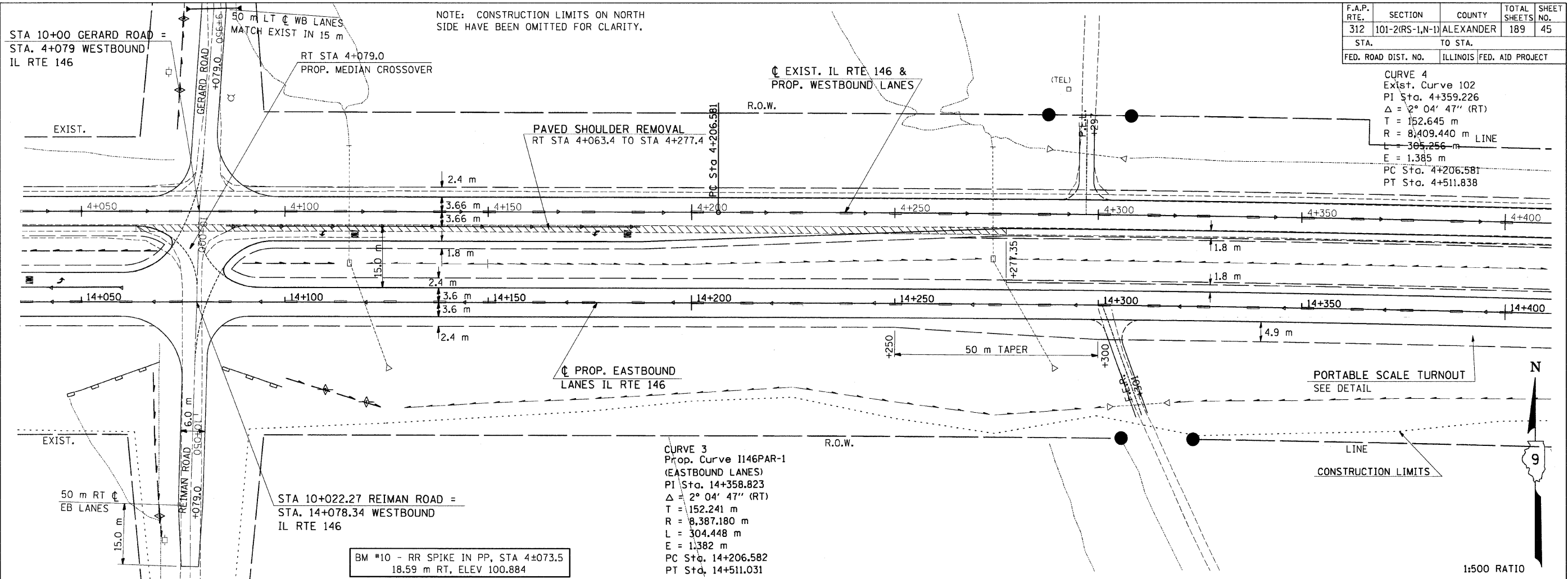


F.A.P. RTE.	SECTION	COUNTY	TOTAL SHEETS NO.	SHEET NO.
312	101-2(RS-1,N-1)	ALEXANDER	189	45
STA.	TO STA.			
FED. ROAD DIST. NO.	ILLINOIS	FED. AID PROJECT		

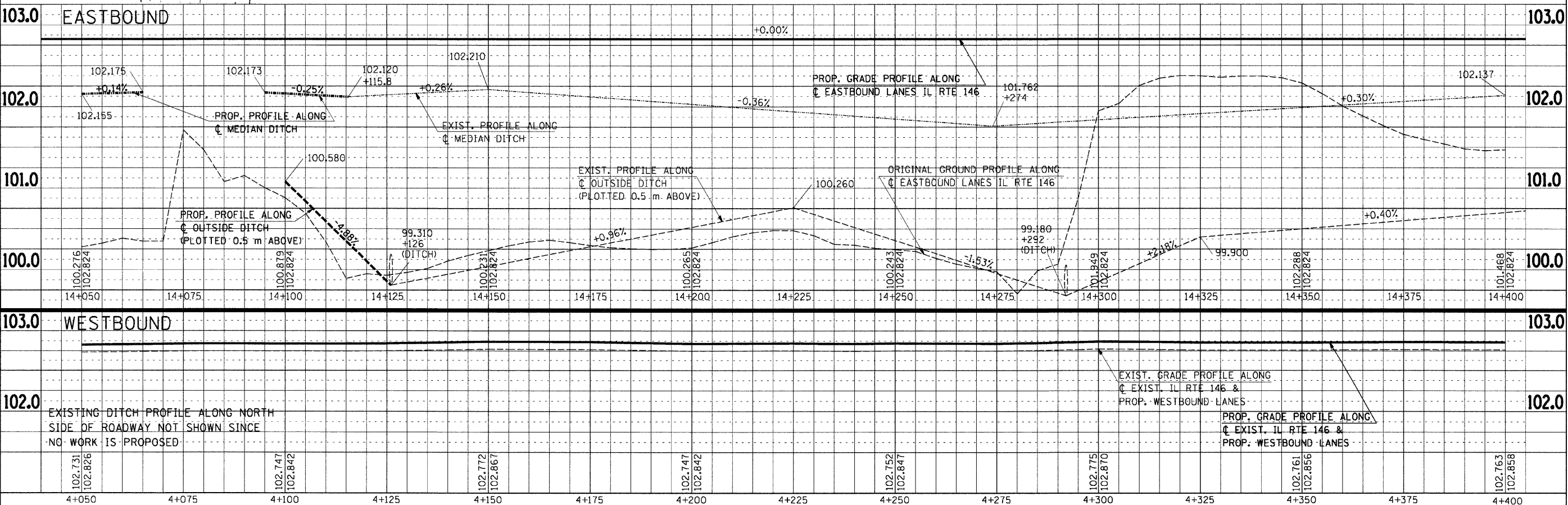
CURVE 4
 Exist. Curve 102
 PI Sta. 4+359.226
 $\Delta = 2^\circ 04' 47''$ (RT)
 T = 152.645 m
 R = 8,409.440 m LINE
 L = 305.256 m
 E = 1.385 m
 PC Sta. 4+206.581
 PT Sta. 4+511.838

NOTE: CONSTRUCTION LIMITS ON NORTH SIDE HAVE BEEN OMITTED FOR CLARITY.



CURVE 3
 Prop. Curve I146PAR-1
 (EASTBOUND LANES)
 PI Sta. 14+358.823
 $\Delta = 2^\circ 04' 47''$ (RT)
 T = 152.241 m
 R = 8,387.180 m
 L = 304.448 m
 E = 1.382 m
 PC Sta. 14+206.582
 PT Sta. 14+511.031

BM #10 - RR SPIKE IN PP, STA 4+073.5
 18.59 m RT, ELEV 100.884



PLAN-PROFILE - STA 4+050 TO STA 4+400

FINAL SURVEY	DATE
SURVEYED	
PLOTTED	
TEMPLATE	
AREAS CHECKED	
NO.	

Tuesday, September 5, 2009 @ 11:06:52 AM
 C:\pwworkspace\alexander\projects\78060\101-2(RS-1,N-1)\101-2(RS-1,N-1)-20-24-62.dwg
 User: alexander\alexander
 Title: 101-2(RS-1,N-1)-20-24-62.dwg
 Plotted by: alexander
 Plot Date: 9/5/2009 11:06:52 AM
 Plot Scale: 1:500
 Plot Area: 101-2(RS-1,N-1)-20-24-62.dwg