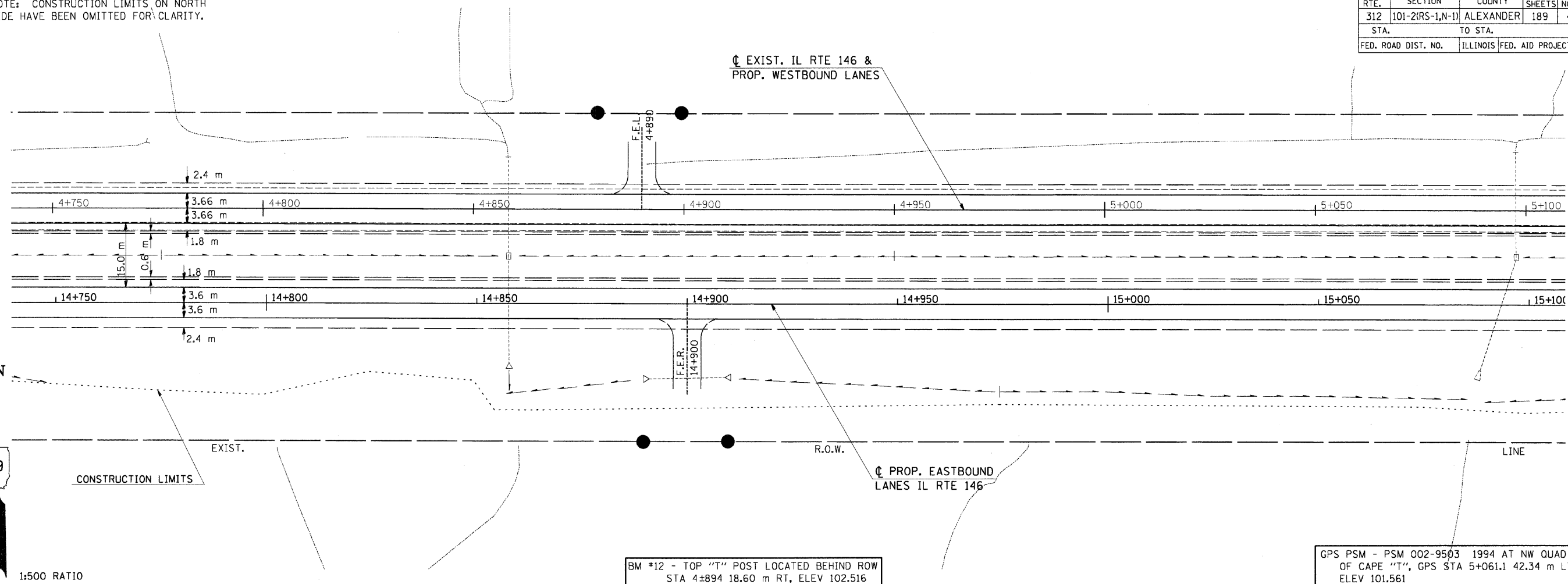


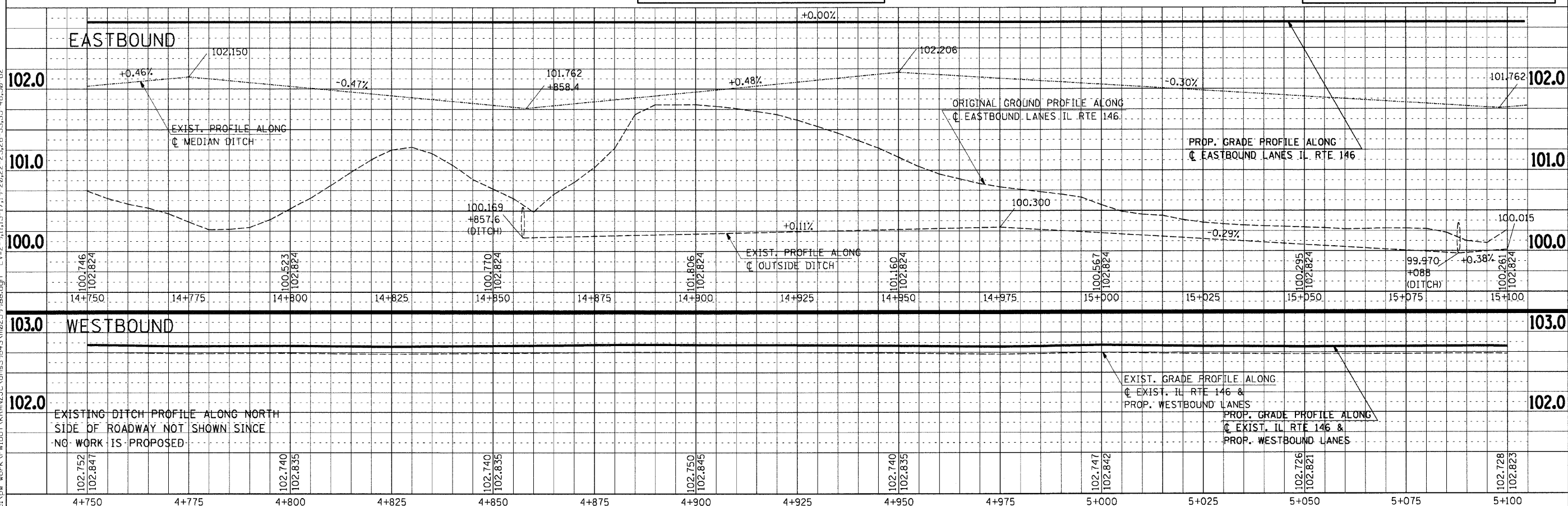
F.A.P. RTE.	SECTION	COUNTY	TOTAL SHEETS	SHEET NO.
312	101-2(IRS-1,N-1)	ALEXANDER	189	47
STA. TO STA.		ILLINOIS FED. AID PROJECT		

NOTE: CONSTRUCTION LIMITS ON NORTH SIDE HAVE BEEN OMITTED FOR CLARITY.



BM #12 - TOP "T" POST LOCATED BEHIND ROW
STA 4+894 18.60 m RT, ELEV 102.516

GPS PSM - PSM 002-9503 1994 AT NW QUAD
OF CAPE "T", GPS STA 5+061.1 42.34 m LT,
ELEV 101.561



PLAN-PROFILE - STA 4+750 TO STA 5+100

BY	DATE
FINAL SURVEYED	
SURVEY PLOTTED	
NOTE BOOK TEMPLATE	
AREAS CHECKED	
NO.	

Tuesday September 15, 2009 @ 10:53:09 AM
 c:\pwworkspace\pwworkspace\projects\78060\78060.dwg L:\2-2024-63
 c:\pwworkspace\pwworkspace\projects\78060\78060.dwg L:\1-5-1517-213-62
 c:\pwworkspace\pwworkspace\projects\78060\78060.dwg L:\2-9-1113-1719-2022-2326-3335-4850-62