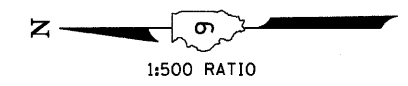
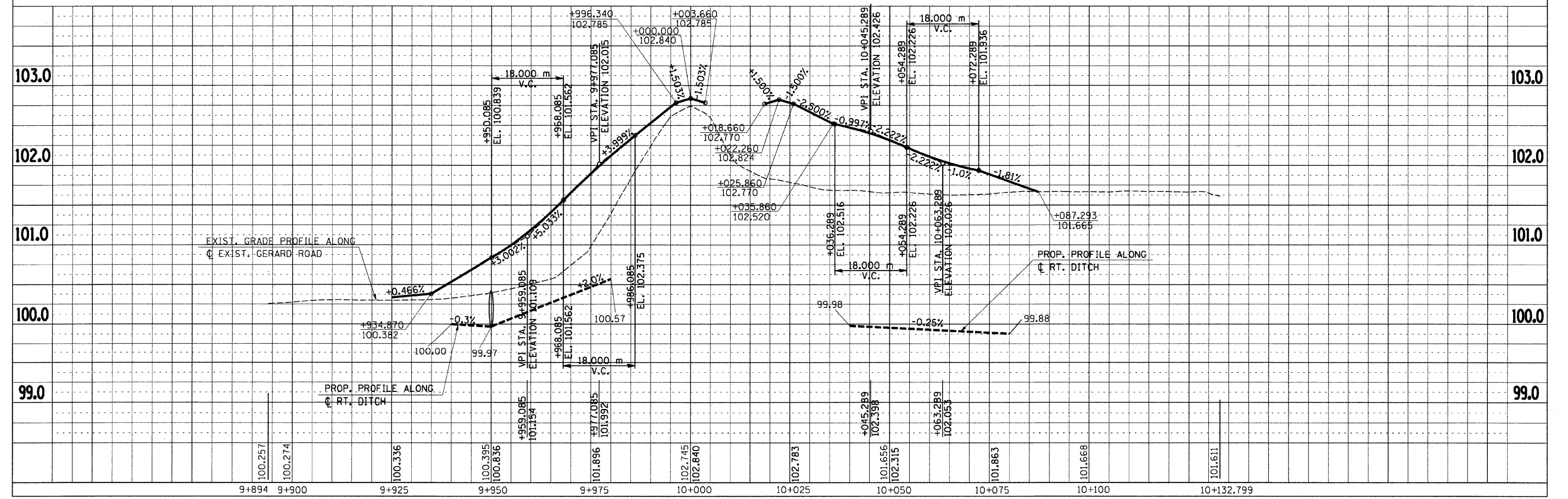
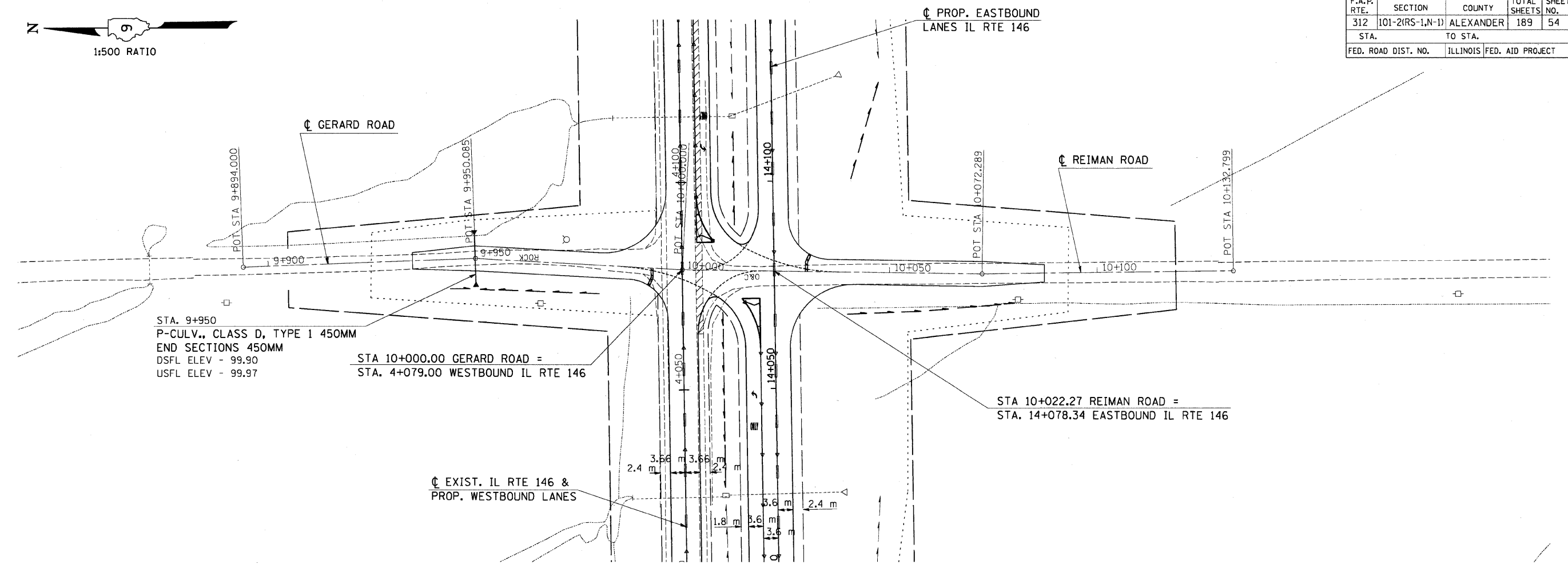


F.A.P. RTE.	SECTION	COUNTY	TOTAL SHEETS	SHEET NO.
312	101-2(RS-1,N-1)	ALEXANDER	189	54
STA.		TO STA.		
FED. ROAD DIST. NO.		ILLINOIS FED. AID PROJECT		



FINAL SURVEY PLOTTED	DATE
NO.	
AREAS CHECKED	
NOTE BOOK TEMPLATE	
BY	



PLAN-PROFILE GERARD ROAD - STA 9+894 TO STA 10+132.799

Tuesday, September 15, 2009 10:34:00 AM
 c:\pwwork\brndob\k\erand\j\c\dms43640\m02599p1.dgn LV=2-20,24-63