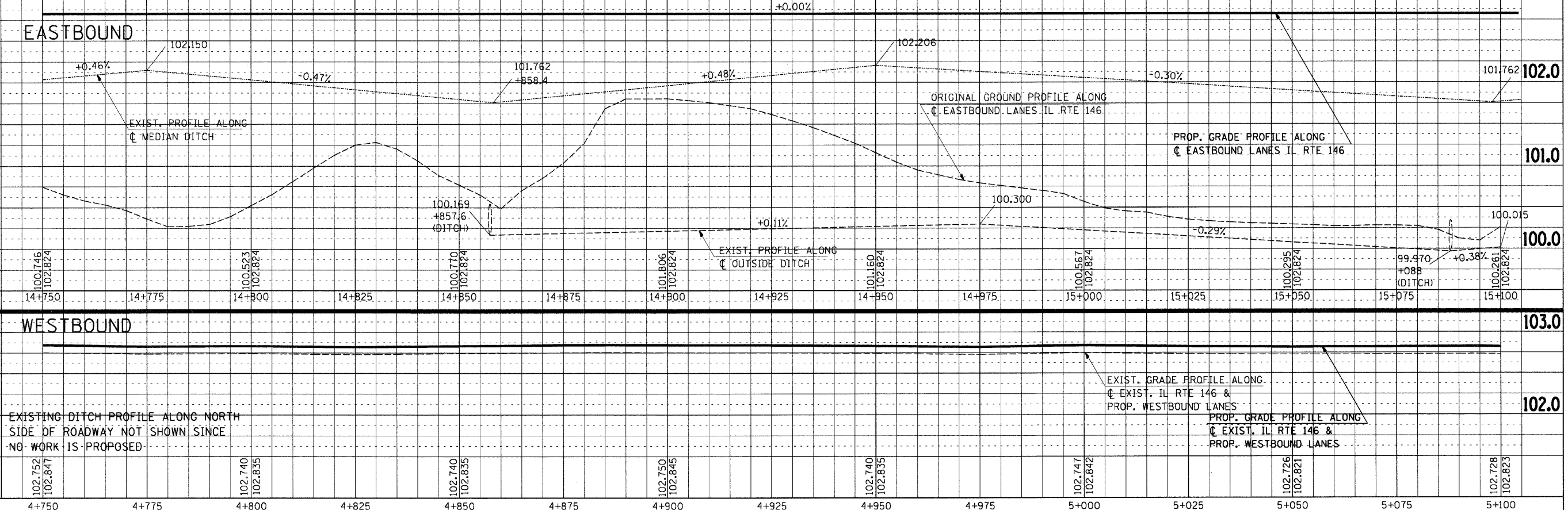
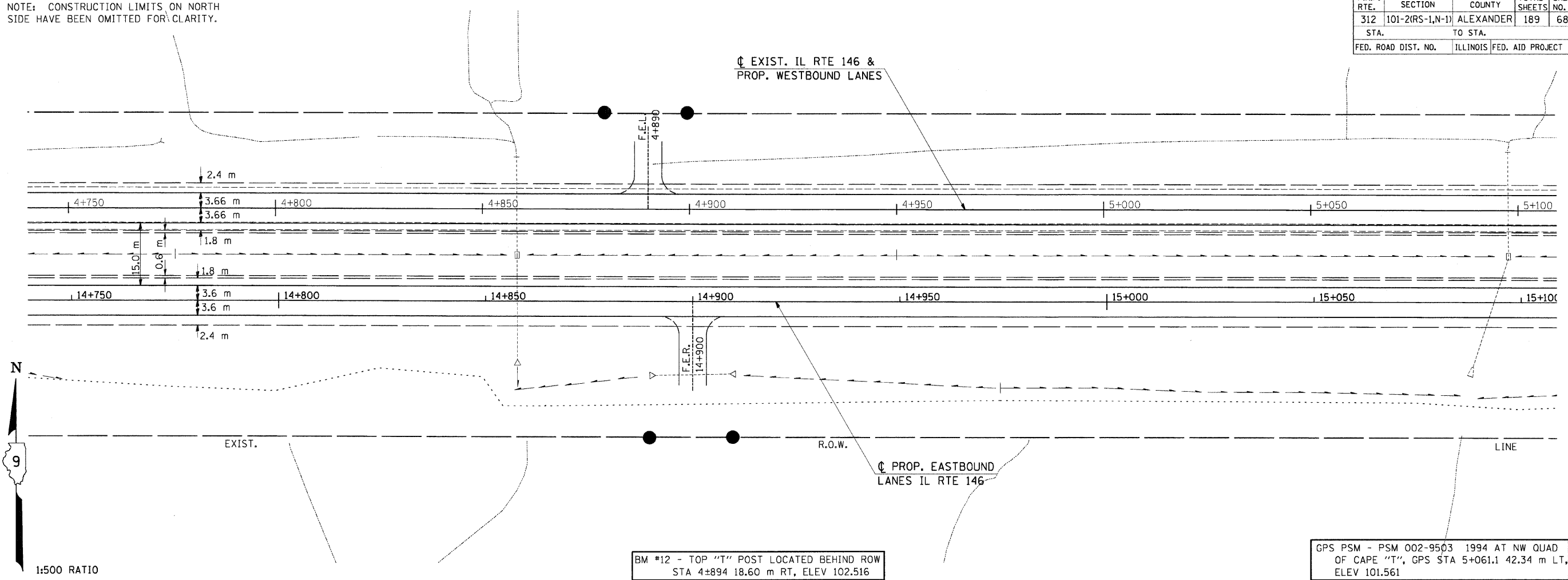


F.A.P. RTE.	SECTION	COUNTY	TOTAL SHEETS	SHEET NO.
312	101-21RS-1,N-1)	ALEXANDER	189	68
STA. TO STA.		TO STA.		
FED. ROAD DIST. NO.		ILLINOIS FED. AID PROJECT		

NOTE: CONSTRUCTION LIMITS ON NORTH SIDE HAVE BEEN OMITTED FOR CLARITY.

BY	DATE
FINAL SURVEY	
SURVEY PLOTTED	
NOTE BOOK TEMPLATE	
AREAS CHECKED	
NO.	



TEMPORARY EROSION CONTROL PLAN - STA 4+750 TO STA 5+100

Tuesday September 15, 2009 @ 8:15:00 AM
 c:\new_work\p\101\KRRANZJC\dms\3640\m02599pl.dgn LV=2-23-25-63
 c:\new_work\p\101\KRRANZJC\dms\3640\m02599pl.dgn LV=1-5-7-15-17-21-23-62
 c:\new_work\p\101\KRRANZJC\dms\3984\3\m02599pl.dgn LV=2-5-11-13-17-19-23-26-33-35-46-50-62
 c:\new_work\p\101\KRRANZJC\dms\3984\3\m02599pl.dgn LV=2-5-11-13-17-19-23-26-33-35-46-50-62