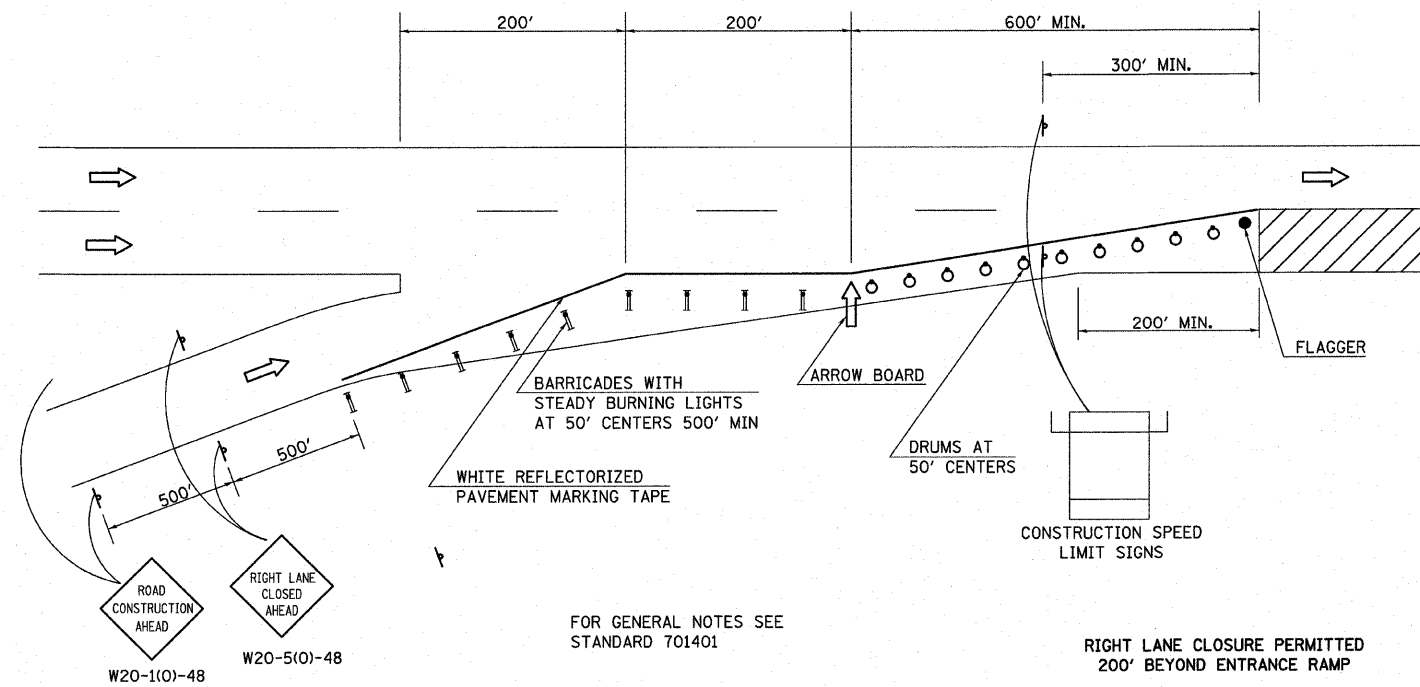
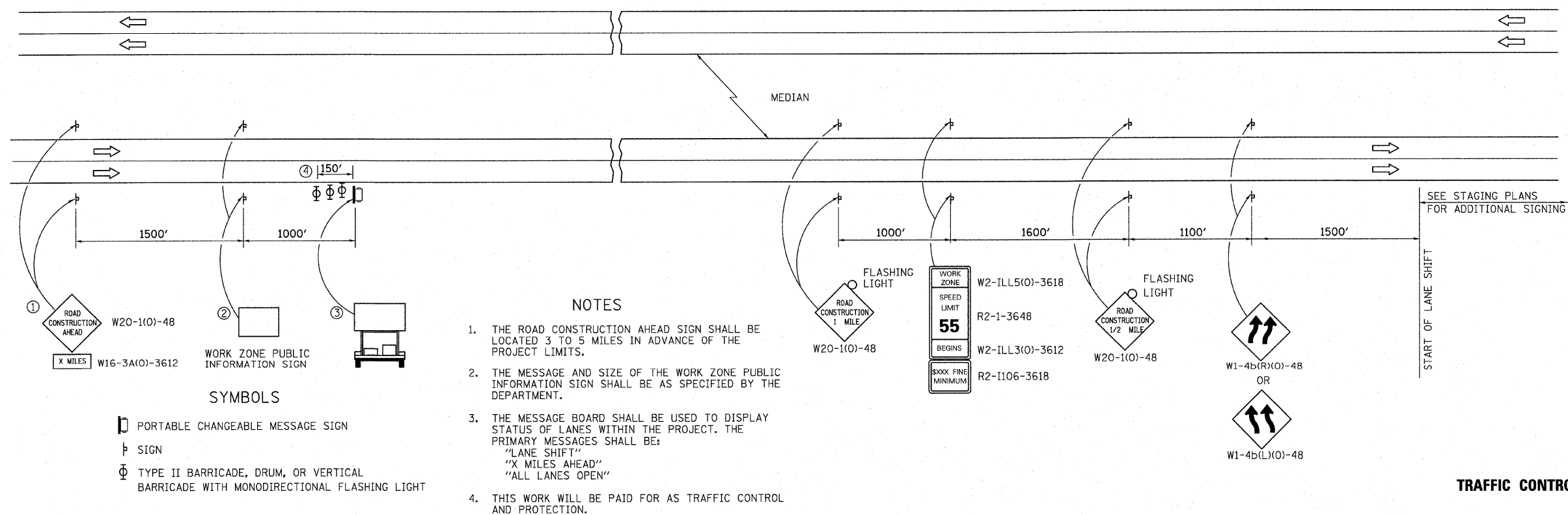


## DETAIL OF TRAFFIC CONTROL AT ENTRANCE RAMPS



**DETAIL OF TRAFFIC CONTROL AT ENTRANCE RAMPS**



### NOTES

1. THE ROAD CONSTRUCTION AHEAD SIGN SHALL BE LOCATED 3 TO 5 MILES IN ADVANCE OF THE PROJECT LIMITS.
2. THE MESSAGE AND SIZE OF THE WORK ZONE PUBLIC INFORMATION SIGN SHALL BE AS SPECIFIED BY THE DEPARTMENT.
3. THE MESSAGE BOARD SHALL BE USED TO DISPLAY STATUS OF LANES WITHIN THE PROJECT. THE PRIMARY MESSAGES SHALL BE:  
"LANE SHIFT"  
"X MILES AHEAD"  
"ALL LANES OPEN"
4. THIS WORK WILL BE PAID FOR AS TRAFFIC CONTROL AND PROTECTION.

### SYMBOLS

- PORTABLE CHANGEABLE MESSAGE SIGN
- SIGN
- TYPE II BARRICADE, DRUM, OR VERTICAL BARRICADE WITH MONODIRECTIONAL FLASHING LIGHT

**TRAFFIC CONTROL AND PROTECTION**

FILE NAME =	USER NAME = maisegraser	DESIGNED -	REVISED -	<b>STATE OF ILLINOIS DEPARTMENT OF TRANSPORTATION</b>	<b>SUGGESTED STAGING DETAILS I-57 OVER 7TH ST / C&amp;E RAILROAD</b>	F.A.I. RTE.	SECTION	COUNTY	TOTAL SHEETS	SHEET NO.
H:\P\25066p2\Technical_Production\Civil\	:\trestation\Sec285VB\stgpin285vb.dgn	DRAWN -	REVISED -			57	(28-5)VB-1	FRANKLIN	81	21
	PLOT SCALE = 50,0000' / IN.	CHECKED -	REVISED -			CONTRACT NO. 78157				
	PLOT DATE = 3/15/2010	DATE -	REVISED -			FED. ROAD DIST. NO. ILLINOIS FED. AID PROJECT				