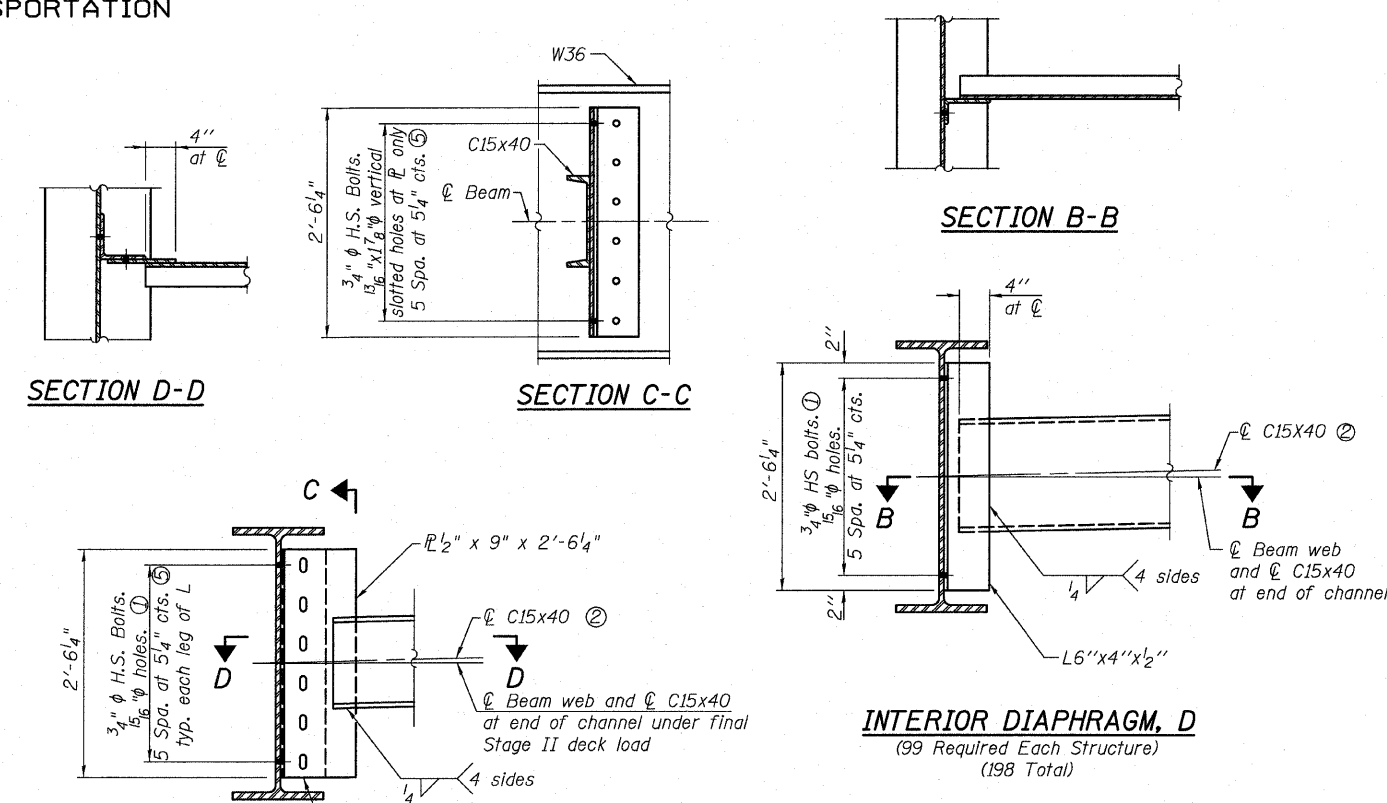
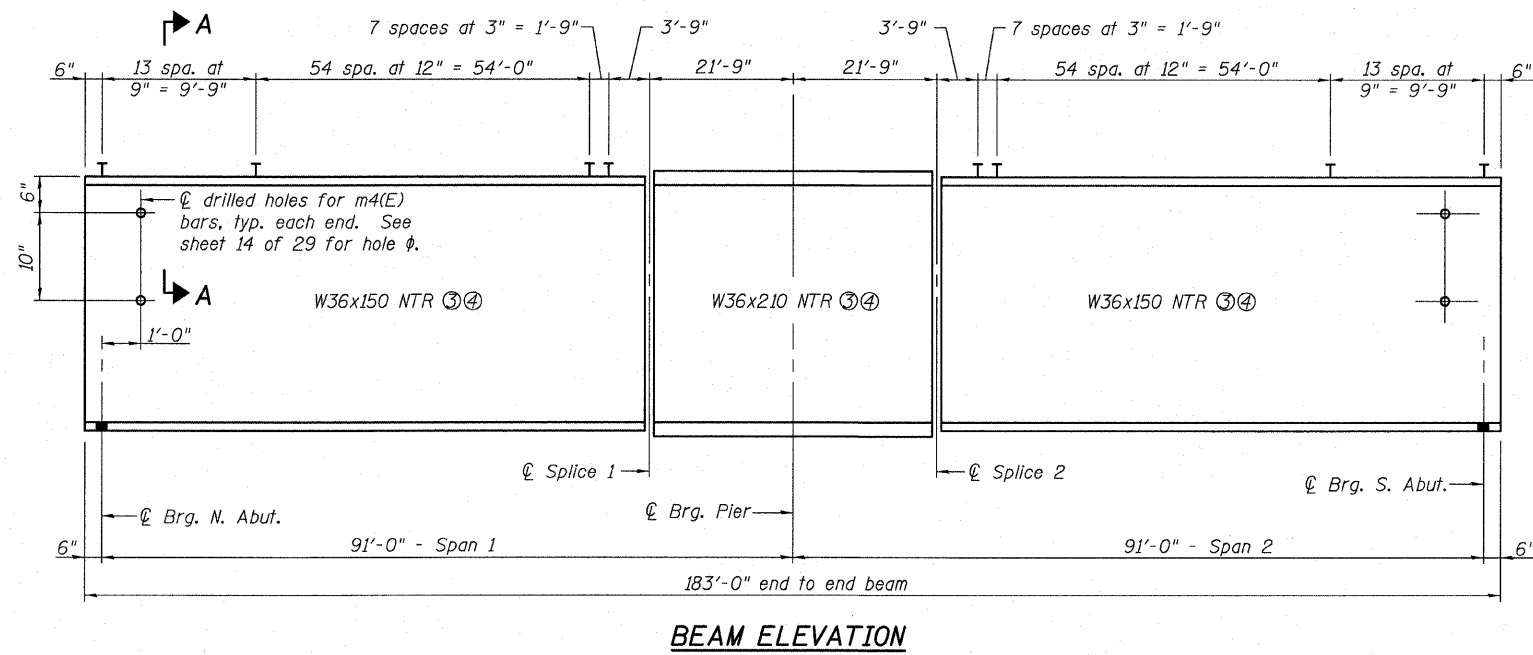


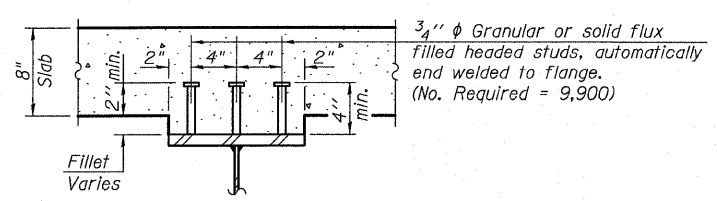
STATE OF ILLINOIS
DEPARTMENT OF TRANSPORTATION



- Note:
- ① Two hardened washers required for each set of oversized holes.
 - ② Alternate C15x50 channels are permitted to facilitate material acquisition. Calculated weight of structural steel is based on the lighter section. The alternate, if utilized, shall be provided at no additional cost to the Department.
 - ③ Load carrying components designated "NTR" shall conform to the Supplemental Requirements for Notch Toughness, Zone 2.
 - ④ AASHTO M270 Grade 50 Steel.
 - ⑤ Provide 1 5/16" x 1 7/8" vertical slotted holes in connection plates attached to channel diaphragms only. Oversized 1 5/16" holes shall be provided in the web of the beam and in the both legs of the angle. Use 5/16" structural plate washers placed over all slotted holes in diaphragm connection. The bolts for the slotted holes shall be finger tight until the second stage pour is complete and then fully tightened. The connection plate and slots shall be positioned so bolts start at one end with no concrete load and finish near the opposite end under deck load, allowing maximum displacement without laterally stressing the main members. Fabricator shall detail connection plate location on channel to allow for differential deflection during Stage II concrete deck pour.
 - ⑥ For fabrication only.
 - ⑦ Top of Beam Elev. at \bar{C} Splice taken at top W36x210.

TOP OF BEAM ELEVATIONS^⑥


	Beam #1 & 22	Beam #2 & 21	Beam #3 & 20	Beam #4 & 19	Beam #5 & 18	Beam #6 & 17	Beam #7 & 16	Beam #8 & 15	Beam #9 & 14	Beam #10 & 13	Beam #11 & 12
\bar{C} Brg. N. Abut.	418.04	418.16	418.27	418.36	418.45	418.36	418.28	418.16	418.04	417.93	417.81
\bar{C} Splice 1 ⑦	418.23	418.35	418.47	418.56	418.64	418.56	418.47	418.36	418.24	418.12	418.00
\bar{C} Brg. Pier	418.30	418.41	418.53	418.62	418.71	418.62	418.53	418.42	418.30	418.18	418.06
\bar{C} Splice 2 ⑦	418.36	418.47	418.59	418.68	418.77	418.68	418.59	418.48	418.36	418.24	418.12
\bar{C} Brg. S. Abut.	418.55	418.67	418.79	418.87	418.96	418.88	418.79	418.67	418.56	418.44	418.32



SECTION A-A

BEAM & FRAMING DETAILS
STRUCTURE NO. 028-0079 (N.B.)
STRUCTURE NO. 028-0080 (S.B.)

SHEET NO. 16	F.A.I. RTE.	SECTION	COUNTY	TOTAL SHEETS	SHEET NO.
	57	(28-5)VB-1	FRANKLIN	81	39
SHEETS 29			CONTRACT NO. 78157		
FED. ROAD DIST. NO. 7 ILLINOIS FED. AID PROJECT					


OATES ASSOCIATES
 Consulting Engineers
 Eastport Business Center 1
 100 Lanter Court, Suite 1
 Collinsville, Illinois 62234
 618-345-2200
 Design Firm License No. 184.001115

DESIGNED	JAD
CHECKED	MJP
DRAWN	JAD
CHECKED	MJP