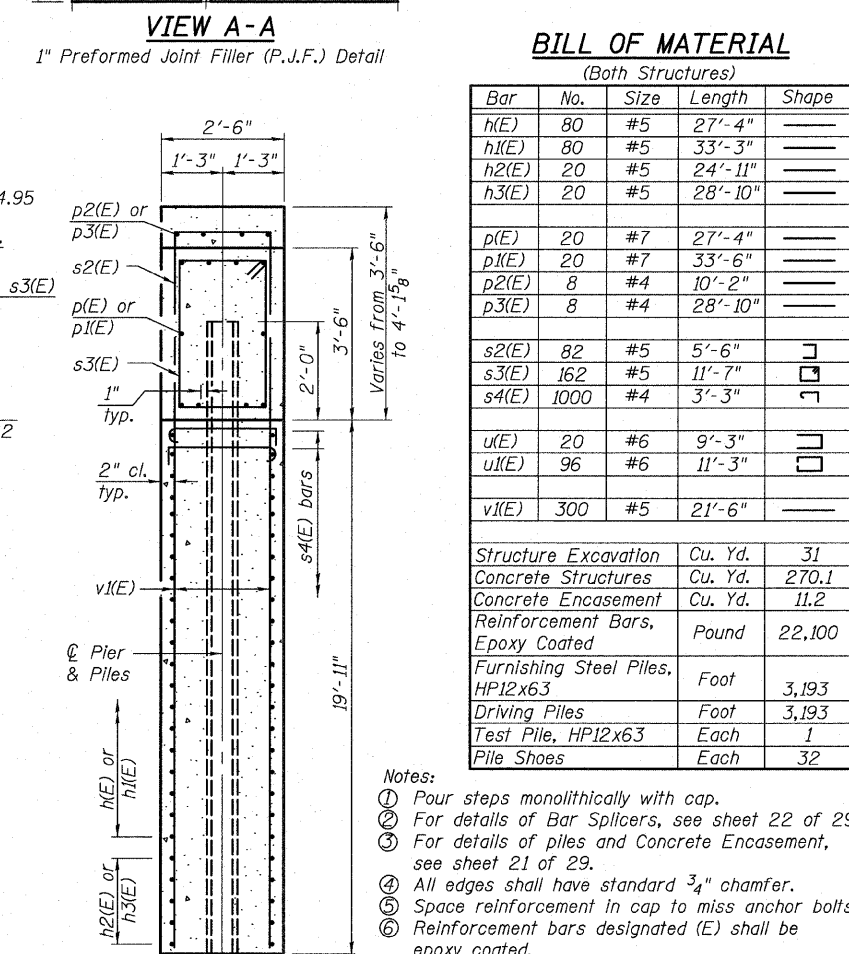
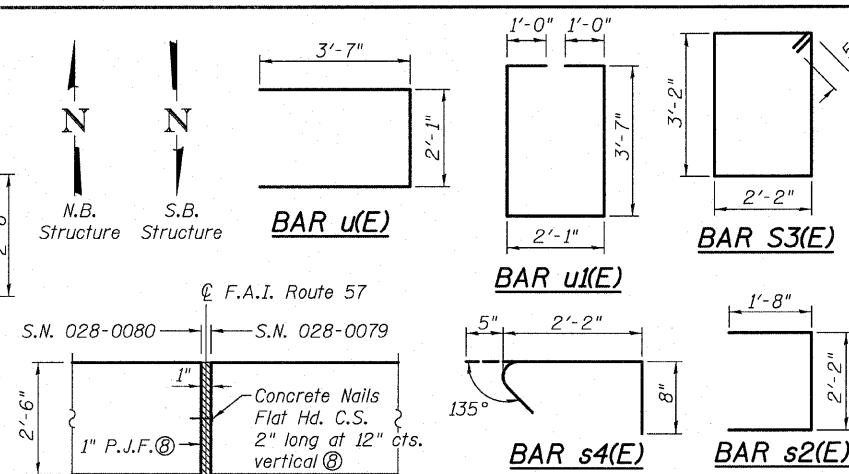
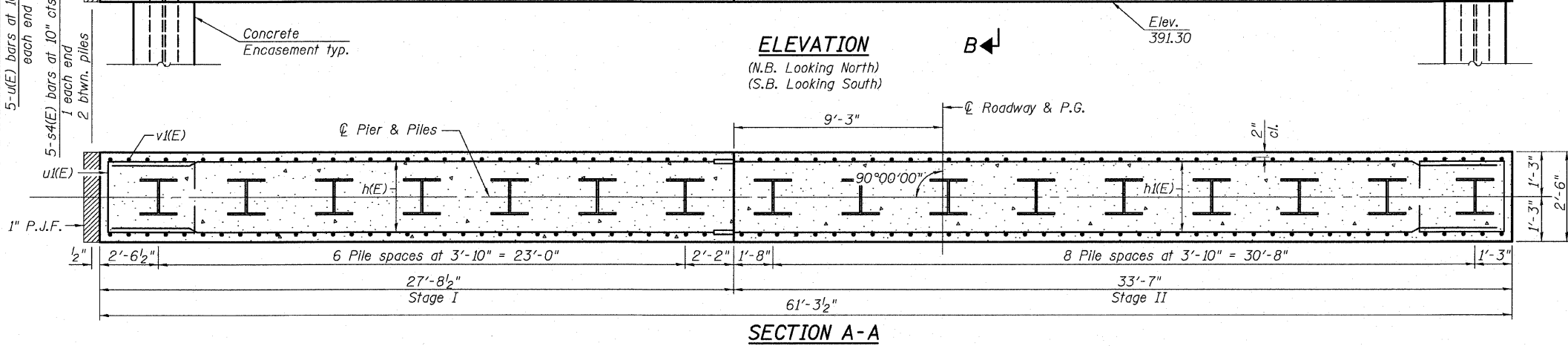
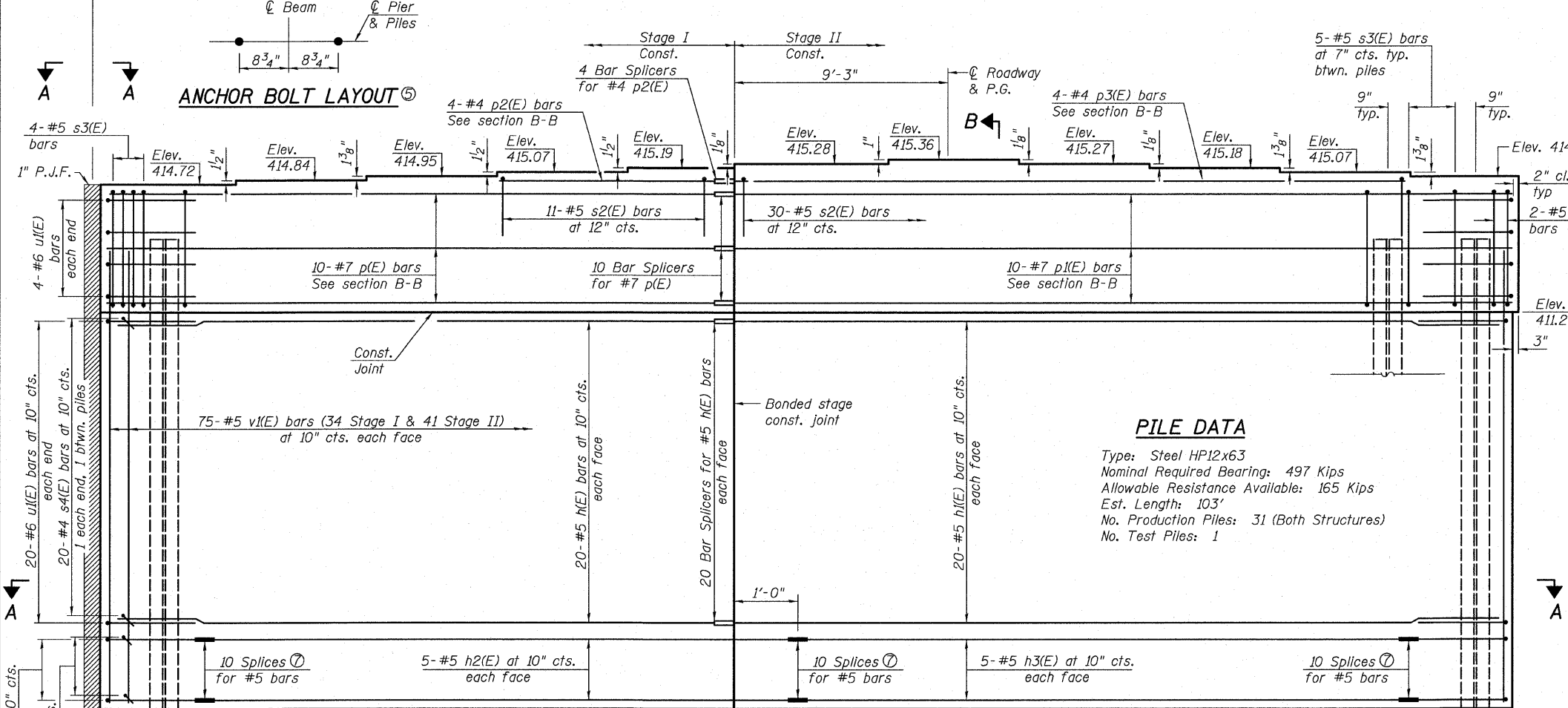
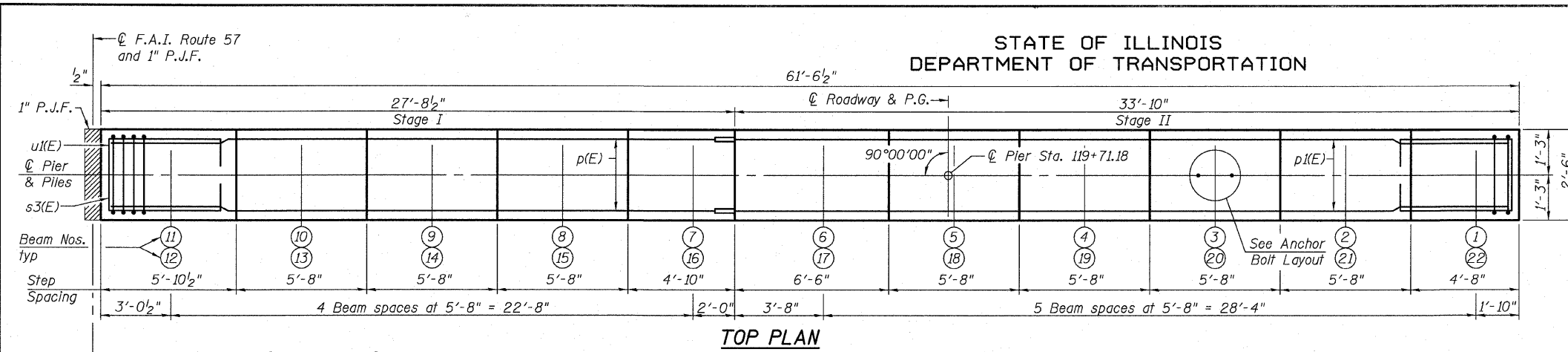


STATE OF ILLINOIS
DEPARTMENT OF TRANSPORTATION



- Notes:
- ① Pour steps monolithically with cap.
 - ② For details of Bar Splicers, see sheet 22 of 29.
 - ③ For details of piles and Concrete Encasement, see sheet 21 of 29.
 - ④ All edges shall have standard 3/4" chamfer.
 - ⑤ Space reinforcement in cap to miss anchor bolts.
 - ⑥ Reinforcement bars designated (E) shall be epoxy coated.
 - ⑦ Mechanical splicers.
 - ⑧ Cost to be included with Concrete Structures.

PIER DETAILS
STRUCTURE NO. 028-0079 (N.B.)
STRUCTURE NO. 028-0080 (S.B.)

SHEET NO. 20	F.A.I. RTE. 57	SECTION (28-5)VB-1	COUNTY FRANKLIN	TOTAL SHEETS 81	SHEET NO. 43
SHEETS 29 CONTRACT NO. 78157					
FED. ROAD DIST. NO. 7 ILLINOIS FED. AID PROJECT					
<p>QATES ASSOCIATES Consulting Engineers</p>			Eastport Business Center 1 100 Lanter Court, Suite 1 Collinsville, Illinois 62234 618-345-2200 Design Firm License No. 184.001115		
DESIGNED JAD			CHECKED MJP		
DRAWN JAD			CHECKED MJP		