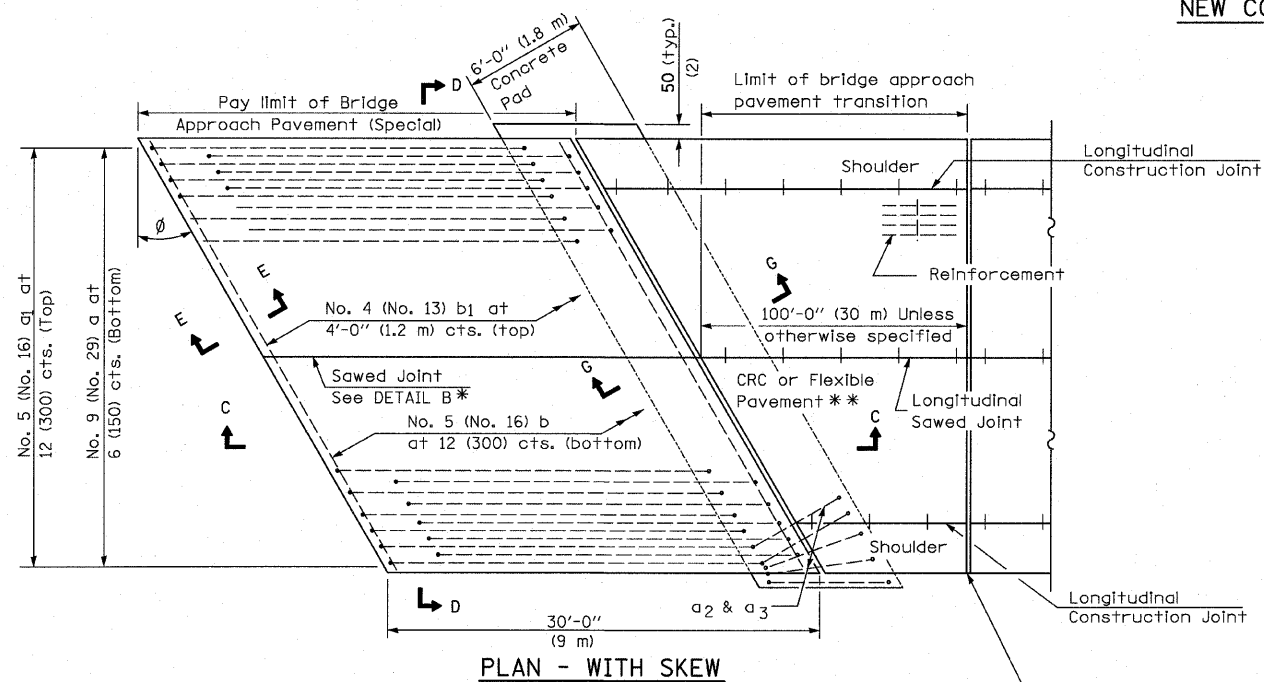
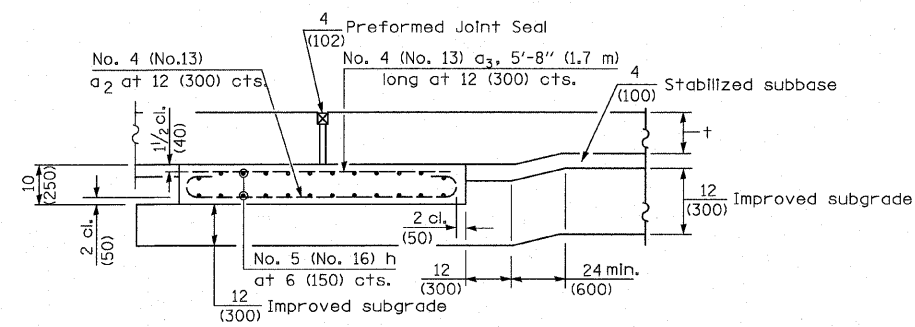
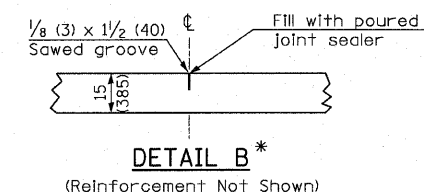


NEW CONSTRUCTION

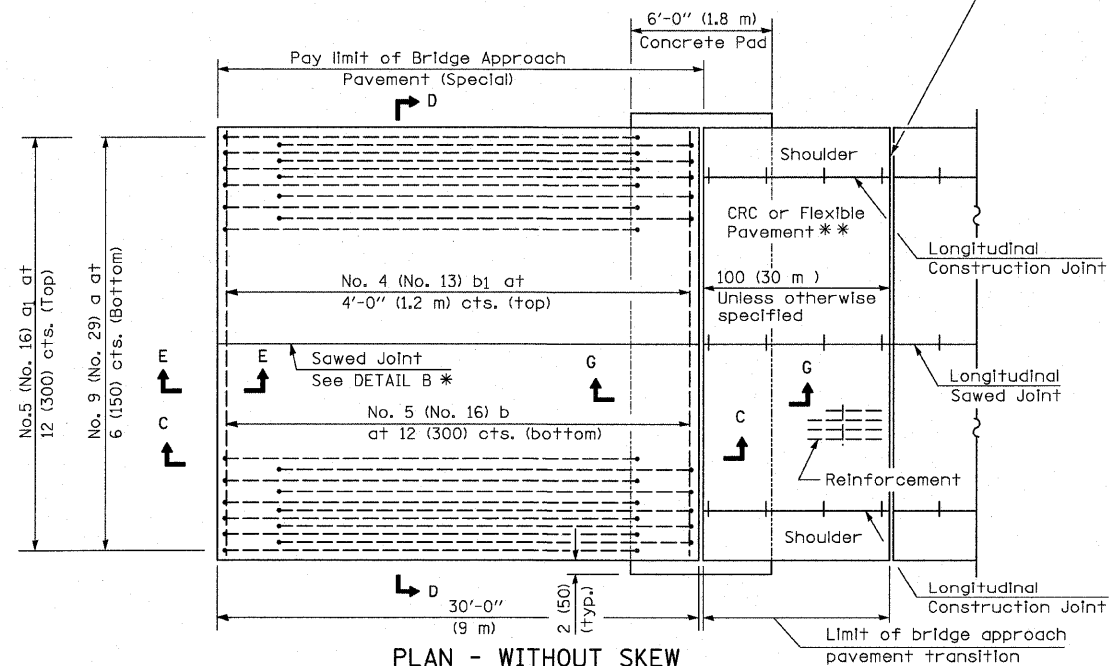


PLAN - WITH SKEW

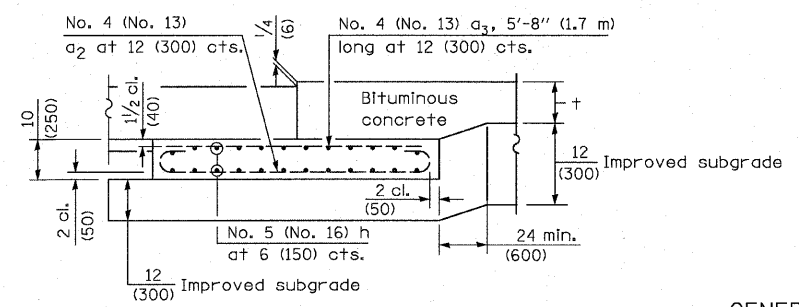


SECTION G-G - RIGID PAVEMENT
(Showing reinforcement)

Rigid Pavement only:
Wide Flange Beam Terminal Joint (See DETAIL AT BEAM - Standard 421101 or 421106) or 2 (50) Trans. Exp. Joint as detailed on Standard 420001.



PLAN - WITHOUT SKEW



SECTION G-G - FLEXIBLE PAVEMENT
(Showing reinforcement)

GENERAL NOTES

- THICKNESS-"t"=Thickness of Pavement.
- See Standard 421001 for reinforcement details not shown.
- See Standard 420001 for joint details not shown.
- All dimensions are in inches (millimeters) unless otherwise shown.

* Saw ζ or lane edge if poured two or more lane widths at a time.
** Omit Reinforcement, tie bars and Long. sawed Jt. for Flexible Pavement.

BRIDGE APPROACH PAVEMENT (SPECIAL)

FILE NAME = H:\P\25866p2\Technical_Production\Civil\	USER NAME = maisiegraser	DESIGNED -	REVISED -	STATE OF ILLINOIS DEPARTMENT OF TRANSPORTATION	DETAILS I-57 OVER 7TH ST / C&E RAILROAD			F.A.I. RTE. 57	SECTION (28-5)VB-1	COUNTY FRANKLIN	TOTAL SHEETS 81	SHEET NO. 53
PROJECT LOCATION = Sec285VB\detail\285vb.dgn	PLOT SCALE = 5/8" = 1' IN.	DRAWN -	REVISED -		SCALE:	SHEET NO.	OF SHEETS	STA.	TO STA.	CONTRACT NO. 78157		
		CHECKED -	REVISED -							FED. ROAD DIST. NO. ILLINOIS FED. AID PROJECT		
		DATE -	REVISED -							CONTRACT NO. 78157		
										CONTRACT NO. 78157		