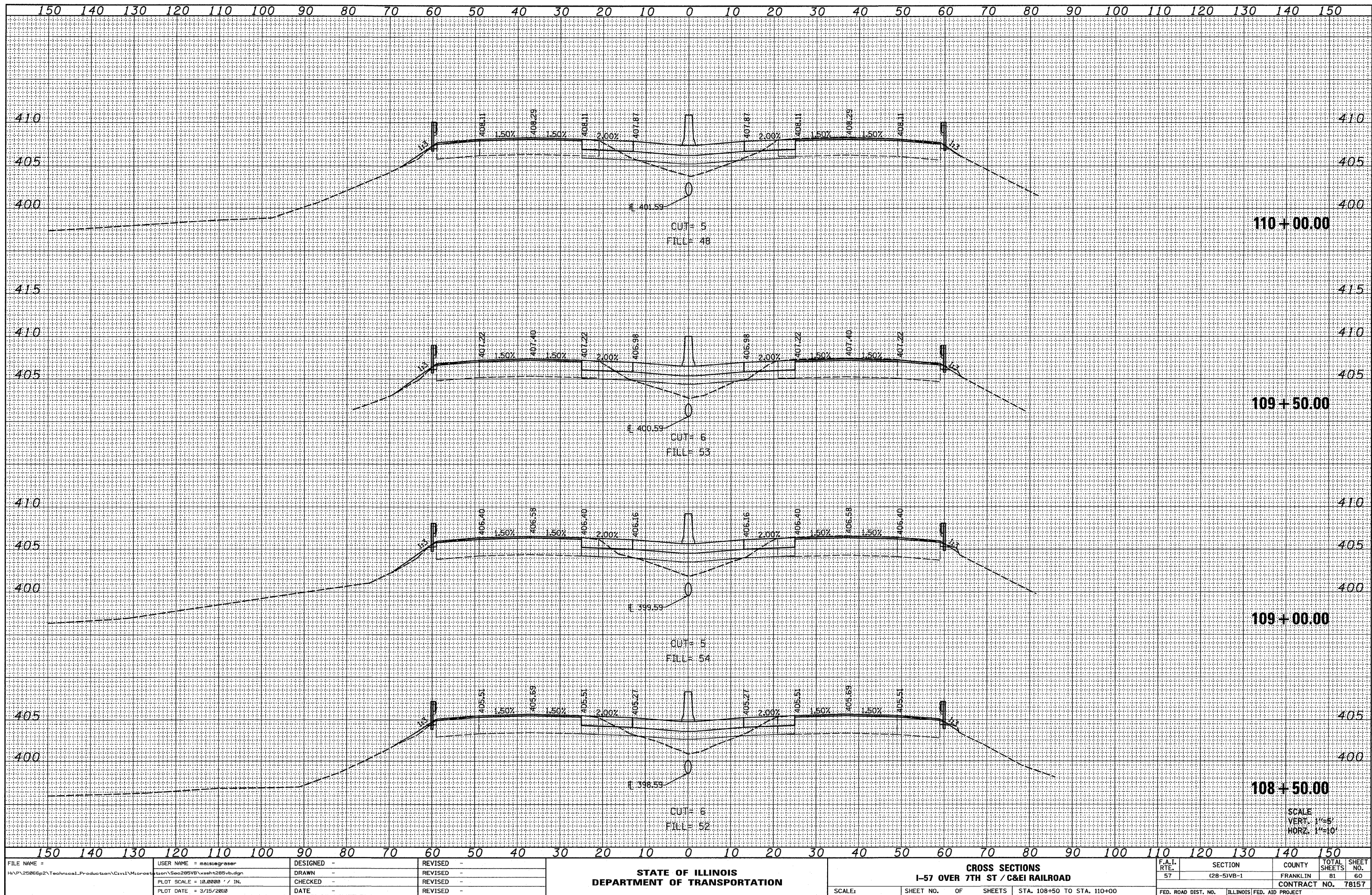


FINAL SURVEY	SURVEYED	BY	DATE
NOTE BOOK NO.	PLOTTED		
	TEMPLATE		
	AREAS CHECKED		

ORIGINAL SURVEY	SURVEYED	BY	DATE
NOTE BOOK NO.	PLOTTED		
	TEMPLATE		
	AREAS CHECKED		



SCALE
VERT. 1"=5'
HORZ. 1"=10'

FILE NAME =	USER NAME = maisiegraser	DESIGNED -	REVISED -	STATE OF ILLINOIS DEPARTMENT OF TRANSPORTATION	CROSS SECTIONS I-57 OVER 7TH ST / C&E RAILROAD			F.A.I. RTE. 57	SECTION (28-5)VB-1	COUNTY FRANKLIN	TOTAL SHEETS 81	SHEET NO. 60
H:\P\25866p2\Technical_Production\Civil\Motorist\28-5vb\28-5vb.dgn		DRAWN -	REVISED -		SCALE:	SHEET NO.	OF	SHEETS	STA. 108+50 TO STA. 110+00	FED. ROAD DIST. NO.	ILLINOIS FED. AID PROJECT	CONTRACT NO. 78157
PLOT SCALE = 1/8"=5' / IN.		CHECKED -	REVISED -									
PLOT DATE = 3/15/2010		DATE -	REVISED -									