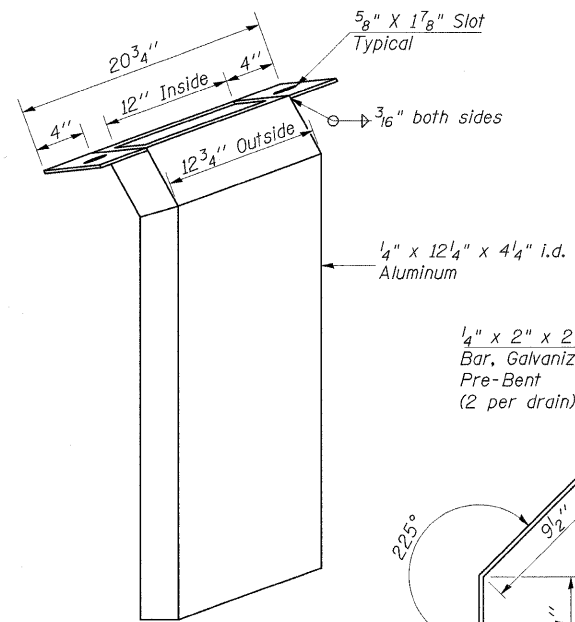
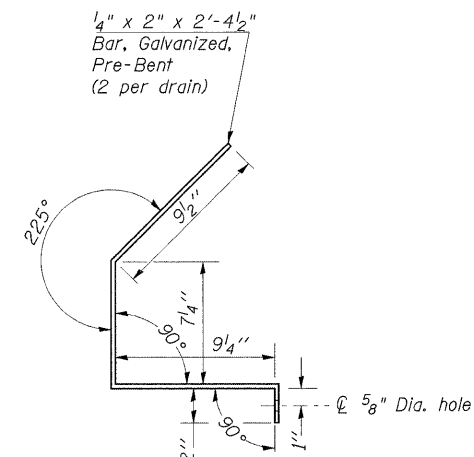


**DRAIN ELIMINATION DETAIL**

144 Locations on SN 002-0001 (N.B.)  
148 Locations on SN 002-0002 (S.B.)

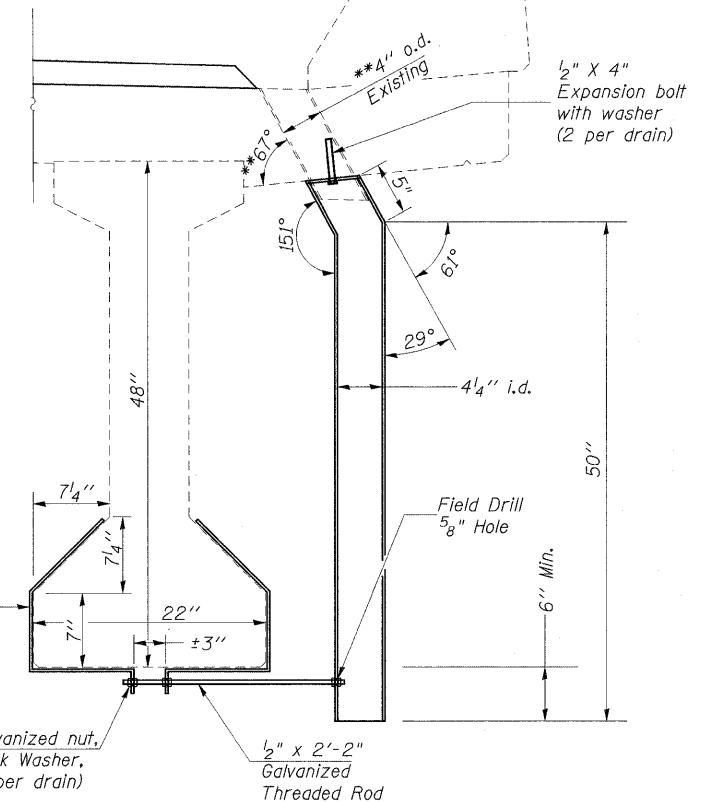


**FLOOR DRAIN EXTENSION DETAIL**



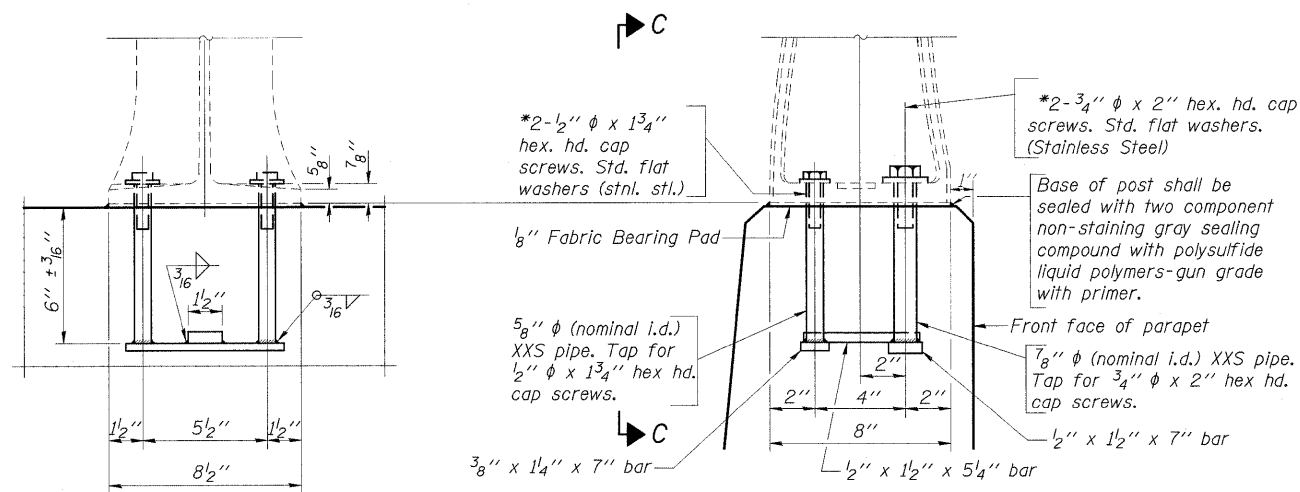
**BRACKET DETAIL**

1/4" x 2" Bar Galvanized, Pre-bent (See Detail)



**FLOOR DRAIN EXTENSIONS**

191 Locations on SN 002-0001 (N.B.)  
199 Locations on SN 002-0002 (S.B.)



**VIEW C-C**

**RAIL POST DETAILS**

35 Locations on SN 002-0001 (N.B.)  
36 Locations on SN 002-0002 (S.B.)

**Notes:**

Drain extensions locations (approximately every other remaining drain) shall be subject to approval by the Engineer.  
Post shall be normal to parapet.  
\*In lieu of the cast-in-place anchor device shown, the Contractor has the option of drilling and setting stainless steel anchor rods of the same diameter and grade as the specified cap screws according to Article 509.06 of the Standard Specifications. Embedment shall be according to the manufacturer's specifications.  
Removal and re-erection of the existing aluminum handrail, rail post, and all new applicable hardware, including labor and installation shall be included in the cost of Concrete Removal.  
\*\* Field Verify.

**DRAINS AND RAILING DETAILS**

ALEXANDER COUNTY  
STRUCTURE NO. 002-0001 (N.B.)  
STRUCTURE NO. 002-0002 (S.B.)

FILE NAME =	USER NAME = cornellm	DESIGNED - TWH	REVISED -	<b>STATE OF ILLINOIS DEPARTMENT OF TRANSPORTATION</b>	<b>DRAINS AND RAILING DETAILS</b>				F.A.I. RTE.	SECTION	COUNTY	TOTAL SHEETS	SHEET NO.	
ca:\pwwork\pwwid01\CORNELLM\0170050\02-0001-0002-sht-plan.dgn	PLOT SCALE = 1:5000 / IN.	DRAWN - TWH	REVISED -		SCALE:	SHEET NO.	OF	SHEETS	STA.	TO STA.	57	D9 BSMART 2010-1	ALEXANDER	25 21
PLOT DATE = 2/18/2010	DATE = 10/15/09	CHECKED - MAS	REVISED -						FED. ROAD DIST. NO.	ILLINOIS FED. AID PROJECT				
									CONTRACT NO. 78173					