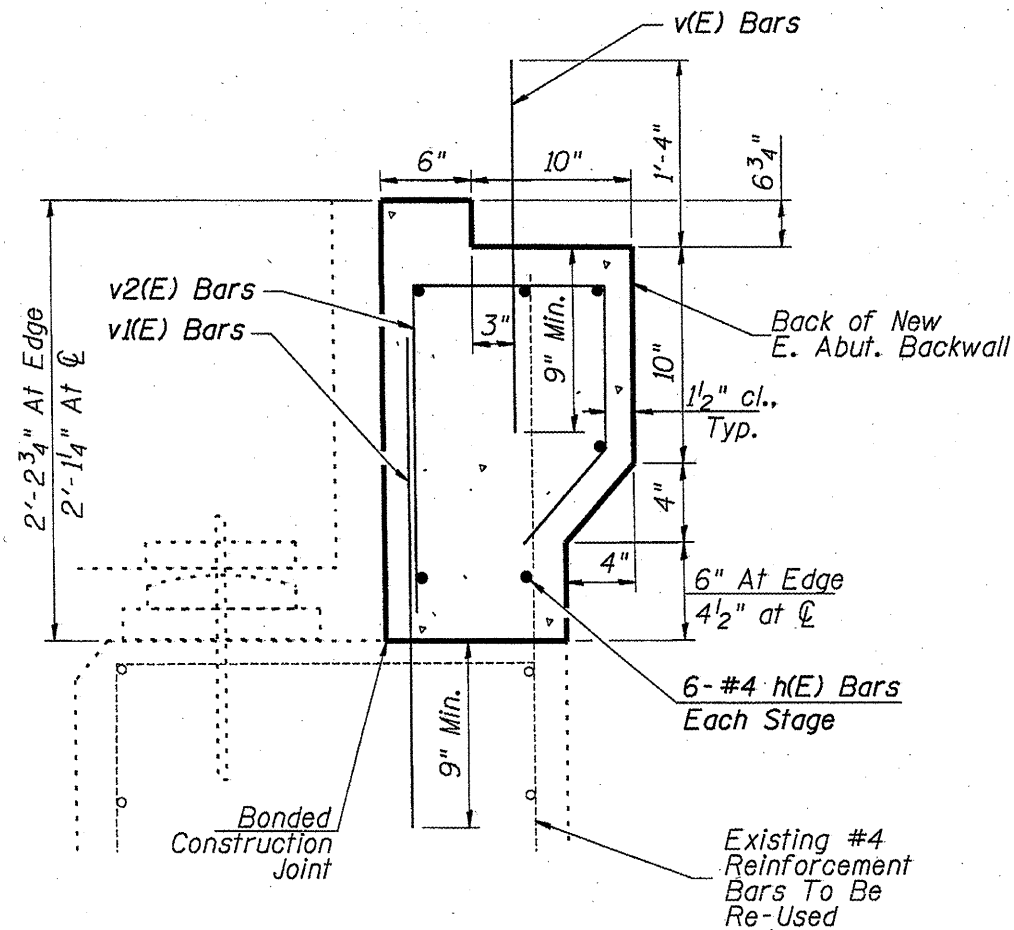
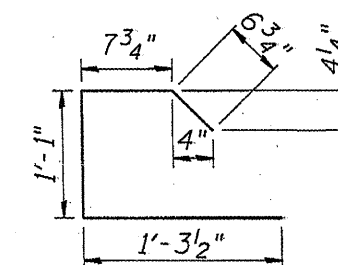


**EAST ABUTMENT BACKWALL
BILL OF MATERIAL**

Bar	No.	Size	Length	Shape
h(E)	12	#4	20'-8"	—
v(E)	30	#5	2'-1"	—
v1(E)	42	#5	2'-1"	—
v2(E)	42	#5	3'-7"	└
Concrete Structures			Cu. Yd.	4.2
Reinforcement Bars, Epoxy Coated			Pound	480



SECTION E-E



v2(E) Bar

Epoxy grout v1(E) bars according to Section 584 of the Standard Specifications.
Cost included in Reinforcement Bars, Epoxy Coated.

Space drilled holes to miss existing reinforcement in the bearing seat.

See Bar Splicer details on Sheet 14 of 15.

**EAST ABUTMENT BACKWALL
SECTION VIEW**

SN 028-0031

FILE NAME =	USER NAME = gautneyrk	DESIGNED -	REVISED -	STATE OF ILLINOIS DEPARTMENT OF TRANSPORTATION	SCALE: _____ SHEET NO. ____ OF ____ SHEETS STA. _____ TO STA. _____	F.A.P. RTE.	SECTION	COUNTY	TOTAL SHEETS	SHEET NO.
c:\pwwork\pwwork\gautneyrk\d0174138\781	9-sheets.dgn	DRAWN -	REVISED -			853	D9 CM BRIDGE REPAIR 2010-2	FRANKLIN	15	12
PLOT SCALE = 2727.2538' / IN.	CHECKED -	REVISED -	REVISED -			CONTRACT NO. 78179				
PLOT DATE = 4/16/2010	DATE -	REVISED -	REVISED -			ILLINOIS FED. AID PROJECT				