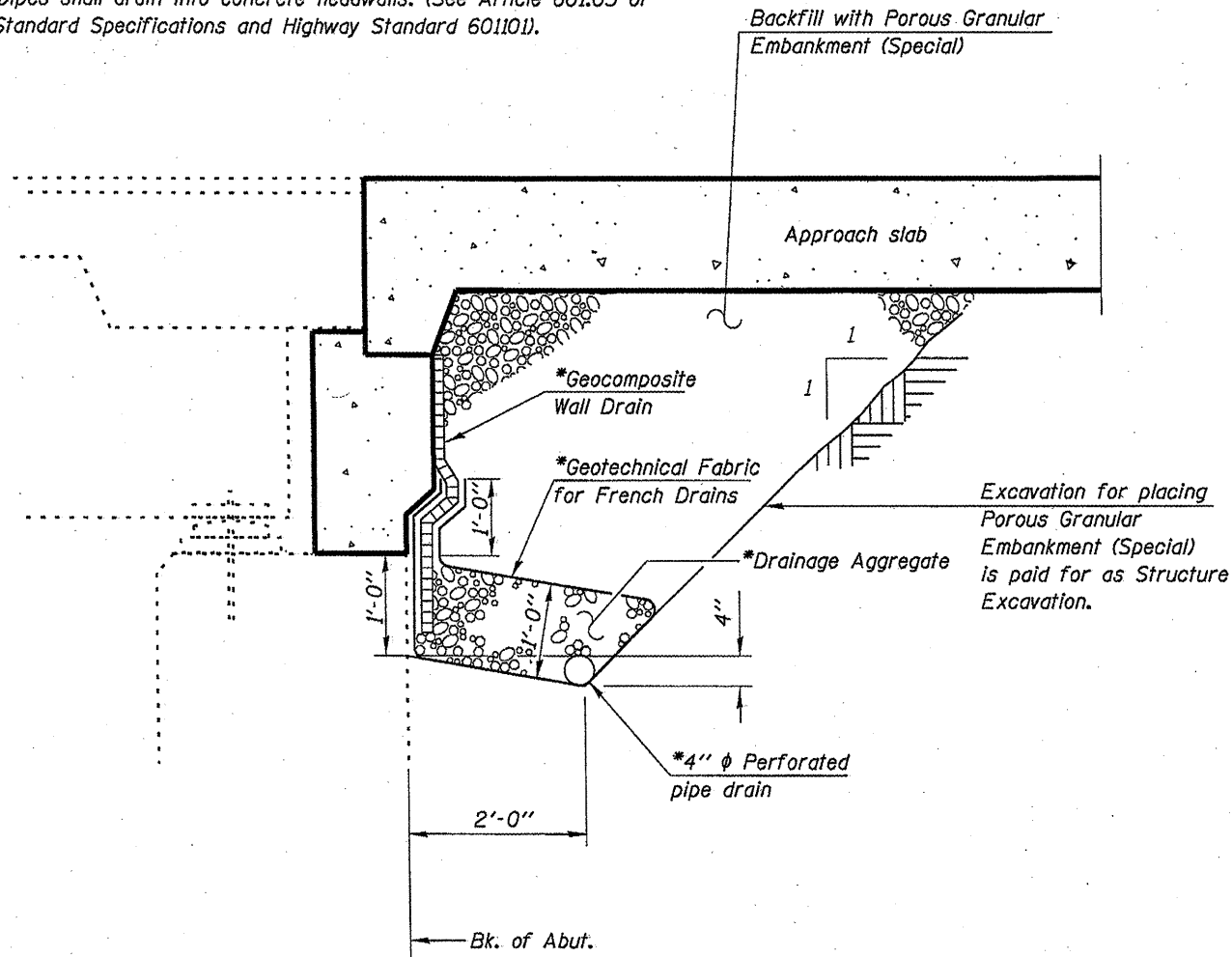


Note:

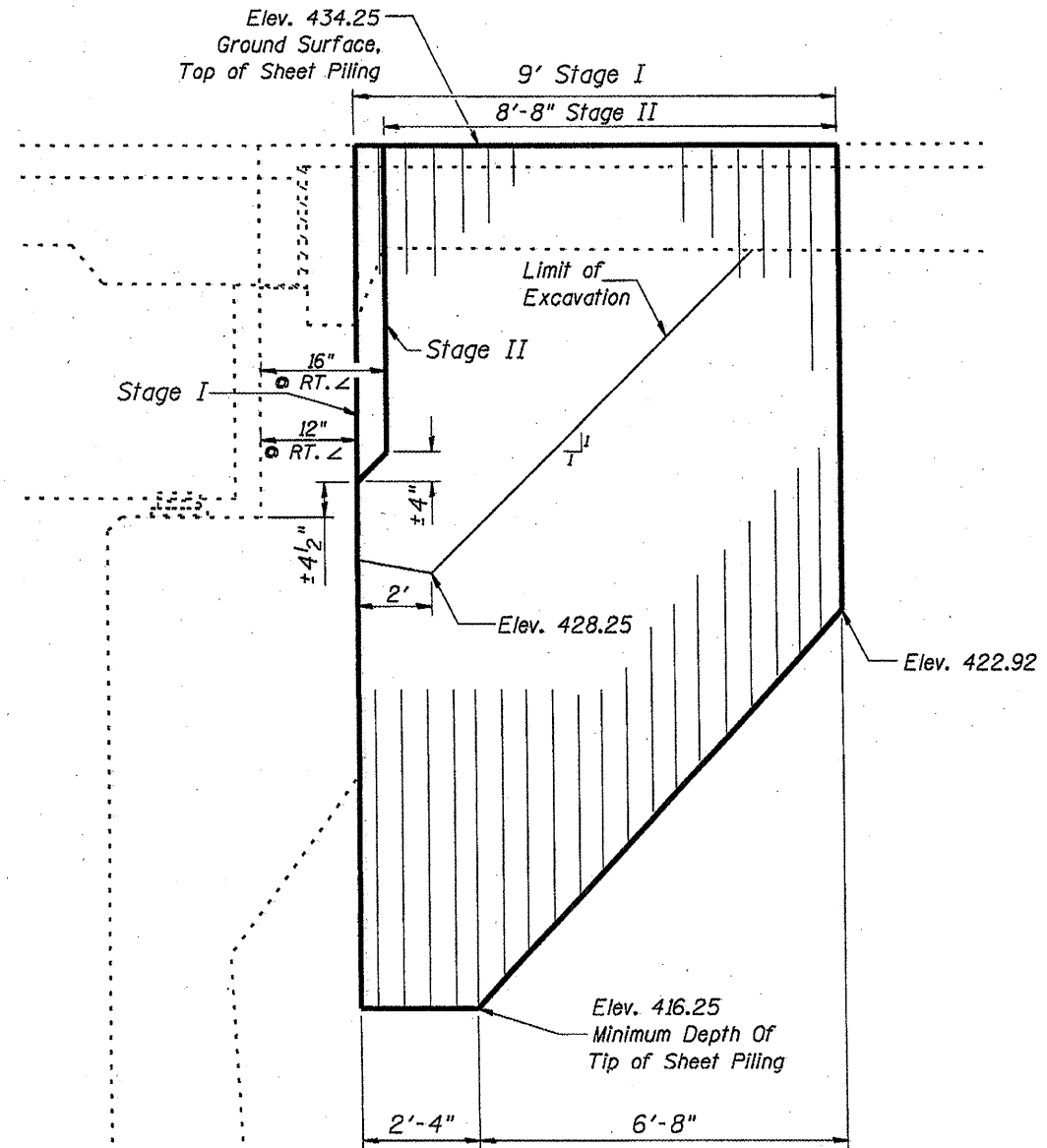
All drainage system components shall extend parallel to the abutment back wall until they intersect the wingwalls or 2'-0" from the end of the wingwalls when the wings are parallel to the abutment. The pipe shall extend under the wingwall, if necessary, until intersecting the side slopes. The pipes shall drain into concrete headwalls. (See Article 601.05 of the Standard Specifications and Highway Standard 601101).



* Included in the cost of Porous Granular Embankment (Special).

Dimensions parallel to centerline of roadway.

**SECTION THRU EAST ABUTMENT
SHOWING BACKFILL**



Minimum Section Modulus = 2 in.³/ft.
Minimum Embedment = 6'

If the Contractor chooses to alter the temporary cantilevered sheet piling design requirements shown on the plans, a design submittal including plan details and calculations will be required for review and acceptance by the Engineer.

TEMPORARY SHEET PILING
Dimensions parallel to centerline of roadway.

SN.028-0031
BACKFILL AND TEMPORARY SHEET PILING

FILE NAME =	USER NAME = geutneyrk	DESIGNED -	REVISD -
ct:\pr-work\pados\geutneyrk\0174138\781	9-sheta.dgn	DRAWN -	REVISD -
PLOT SCALE = 2727.2439' / IN.	CHECKED -	REVISD -	REVISD -
PLOT DATE = 4/16/2010	DATE -	REVISD -	REVISD -

**STATE OF ILLINOIS
DEPARTMENT OF TRANSPORTATION**

SCALE: _____	SHEET NO. _____ OF _____ SHEETS	STA. _____ TO STA. _____
--------------	---------------------------------	--------------------------

F.A.P. RTE.	SECTION	COUNTY	TOTAL SHEETS	SHEET NO.
853	09 CM BRIDGE REPAIR 2010-2	FRANKLIN	15	13
CONTRACT NO. 78179				
ILLINOIS FED. AID PROJECT				