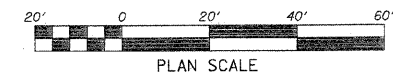


PLAN	DATE
BY	
REVISIONS	
NO.	
DESCRIPTION	
DATE	
BY	
DATE	
BY	
DATE	
BY	
DATE	

PROFILE	DATE
BY	
REVISIONS	
NO.	
DESCRIPTION	
DATE	
BY	
DATE	
BY	
DATE	
BY	
DATE	



LEGEND	
	INLET PROTECTION
	PERIMETER EROSION BARRIER
	DRAINAGE FLOW
	TEMPORARY DITCH CHECK
	STONE DUMPED RIPRAP, CLASS A3
	TREE REMOVAL, ACRES
	EROSION CONTROL BLANKET OVER SEEDING, CLASS 3 (SPECIAL)

Revised 6-7-10

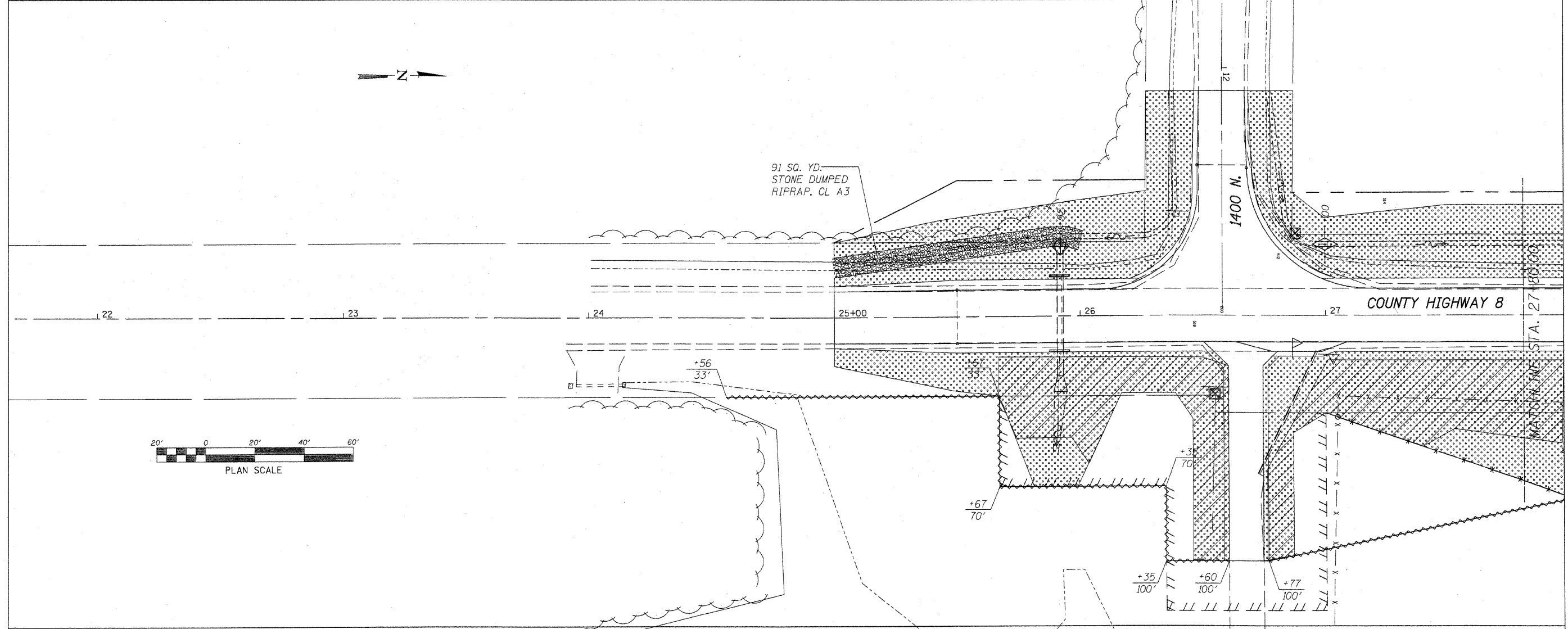
WILLET, HOFMANN & ASSOCIATES, INC.
CONSULTING ENGINEERS
 809 East Second Street Dixon, IL 61021
 Phone 815-294-3351 Fax 815-294-3366
 Design Firm # 184-00918
 www.willettthofmann.com

USER NAME =	DESIGNED -	REVISED -
	DRAWN -	REVISED -
PLOT SCALE =	CHECKED -	REVISED -
PLOT DATE =	DATE -	REVISED -

BUREAU COUNTY
BRIDGE REPLACEMENT
FAS 188 (C.H. 8) OVER IAIS RAILROAD & THE HENNEPIN CANAL

SWPPP - C.H. 8

F.A.S.	SECTION	COUNTY	TOTAL SHEETS	SHEET NO.
188	05-00195-00-BR	BUREAU	127	53
STA. 21+80 TO STA. 27+80			CONTRACT NO. 87380	
FED. ROAD DIST. NO. 7 ILLINOIS FED. AID PROJECT BRS-0188(118)				



FILE NAME = s:\bure\1000000000\BureauCounty\Design\swppp\cch8.dgn